

# ASK DOUBLE-WALLED ENCLOSURES



## TECHNICAL DATA SHEETS

## Specification

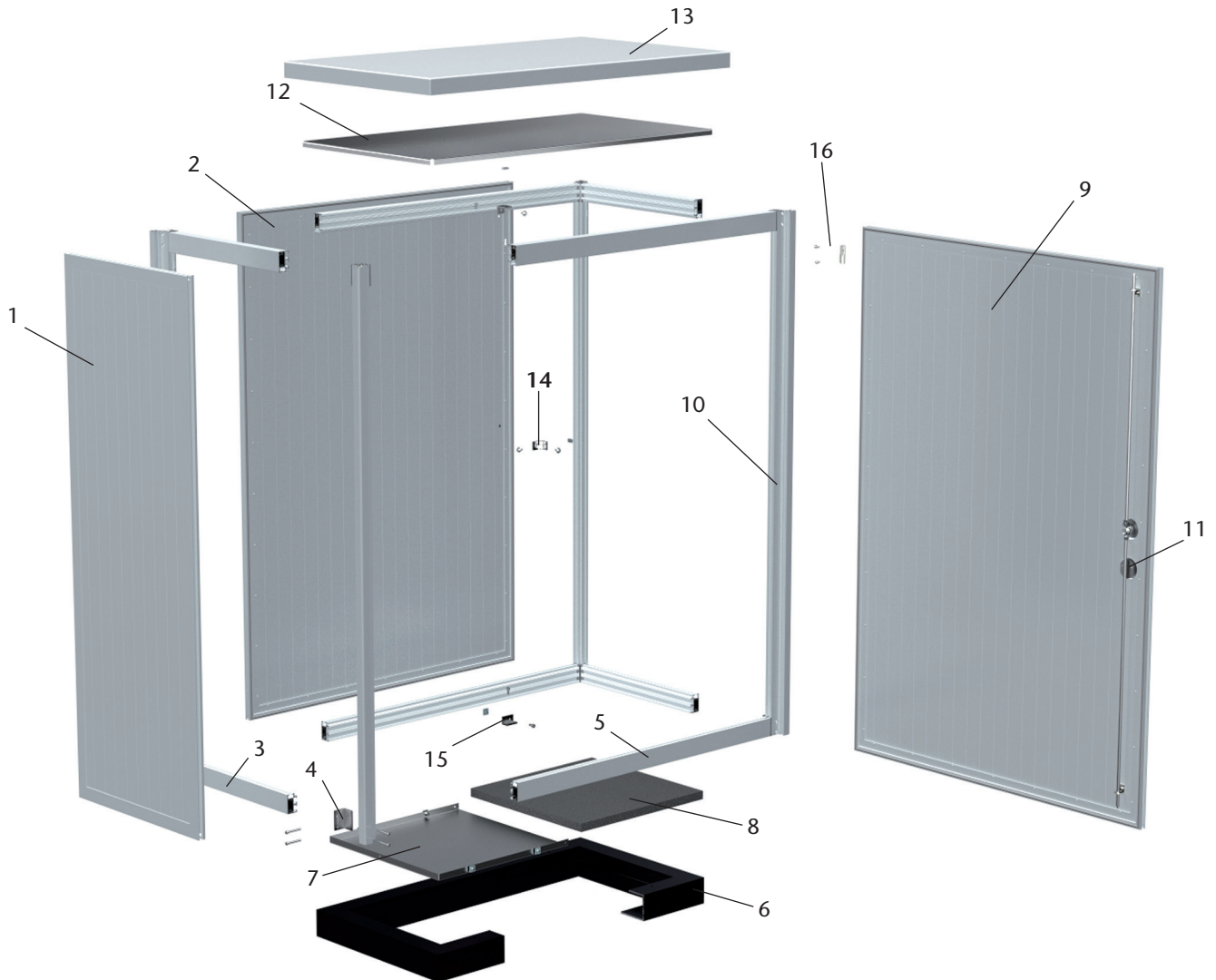
Design	Stable, torsion-free profile technology Double-wall design made from hollow aluminum profiles Passive heat dissipation through natural convection Integrated, circumferential sliding levels
Protection level	IP 55 according to EN 60529 IK 10 according to EN 62208 WK2 DIN V EN 1630:1999-04/WK2 Shock, transport and vibration according to ETS EN 300-01 Earthquake-tested according to ETS EN 300-019-2-4
Surface finish	Textured powder coating
Certification	EN 62208, approved for the professional mounting of switchgear assemblies in accordance with EN 61439-1 RoHS / REACH /WEEE-compliant
Dimensions	Width from 250 mm in 25-mm steps Height from 250 mm in 1-mm steps Depth from 250 mm in 25-mm steps Manufactured to customer requirements

## Standard design

- 1-leaf or 2-leaf doors, concealed hinges with 180° opening angle
- Closure with 3-point bar lock and lever handle, prepared for lock cylinders from 1500 mm
- Double-walled roof design
- Base sealed by vapor barrier or baseplate
- Standard colors RAL 7032 and 7035
- Can be combined into rows or extended in all dimensions

## Optional design

- Various locking mechanisms, actuators and lock cylinders
- Door stay
- Vapor barrier
- Front sections can be inserted or screwed on from the front, side or rear as required
- Pockets for diagrams and charts
- Mounting plates and partitions
- Various heat dissipation modules and heaters
- Fixed, pull-out and folding trays
- Extensions with profiles and channels
- Baseplates, with cutouts and various cover options as required
- Sealable openings for cable inlets
- Inspection window and door-in-door
- Aluminum plinth with heights 50 / 80 / 100 / 200 mm
- ETSI or 19" technology, fixed installation or hinged frame
- Transport eyebolts
- EMC protection against electromagnetic fields
- Chromium steel pilot shaft system
- Special plinth, base frame, ground plinth and shaft systems
- Protective anti-graffiti paint
- Choice of RAL
- Electrical accessories: Door contact switch, lighting, various heat dissipation modules, heaters; for more information see the accessories catalogue



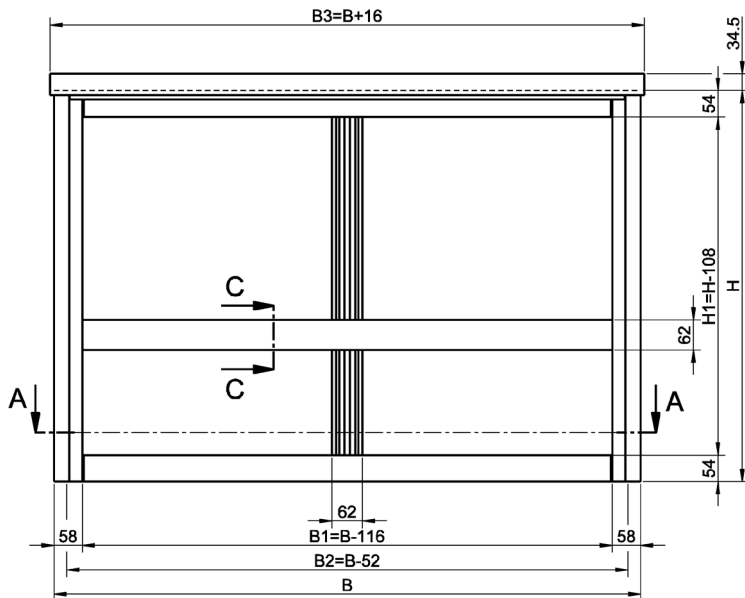
## Description

1	Side wall	9	Door
2	Rear wall	10	Corner post
3	Depth profile	11	Bar lock with lever handle
4	Corner support	12	Sub-roof
5	Width profile	13	Outer roof
6	Plinth	14	Wall brackets
7	Base plate	15	Floor/plinth fixing
8	Mat-type vapor barrier	16	Hinges

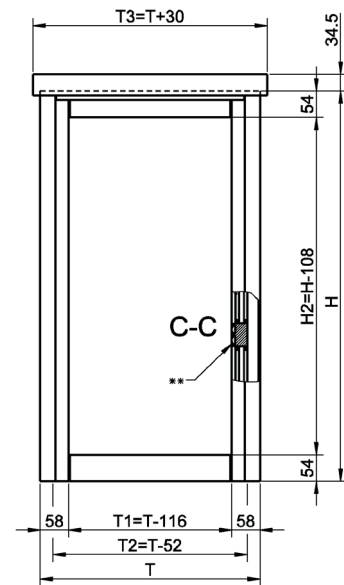
# Standard design, assembly dimensions for integration of fixing rails

4

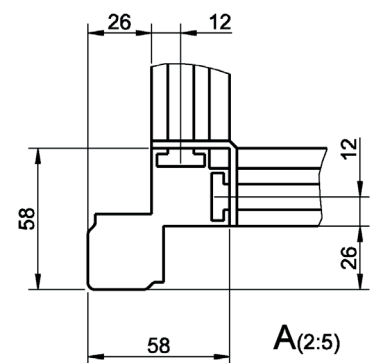
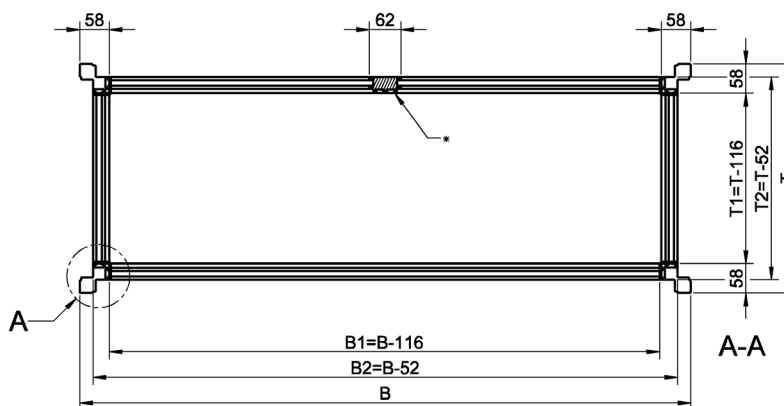
Front view



Side view from left



Top view



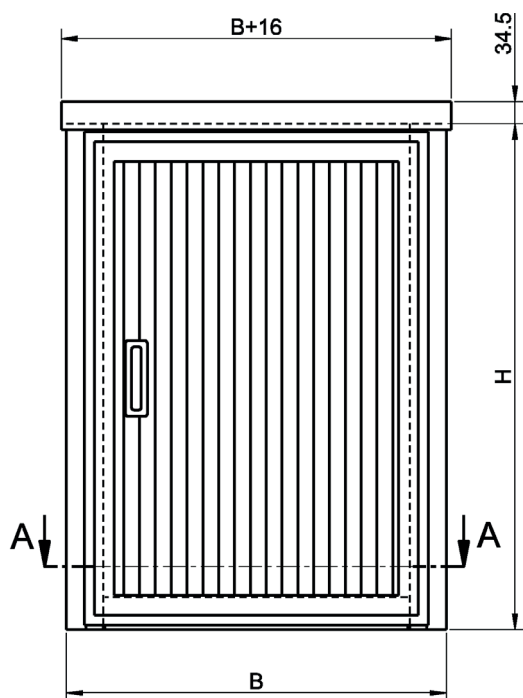
B Width between uprights  
 H Height of uprights  
 T Depth between uprights  
 B1 Clear width  
 B2 max. installation width  
 B3 Width of roof

H1 Clear height  
 T1 Clear depth  
 T2 max. installation depth  
 T3 Depth of roof  
 \* Center strut from  $B > 1600$   
 \*\* Center strut for front partition

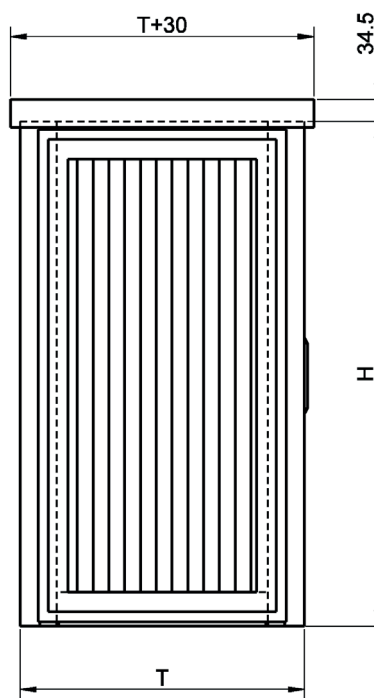
# Standard design, 1-leaf, without plinth

5

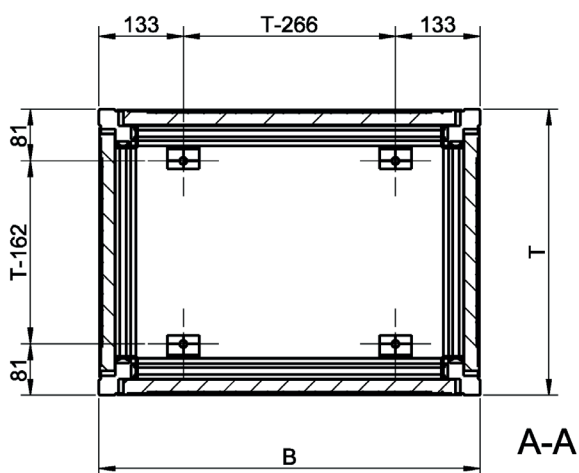
Front view



Side view from left

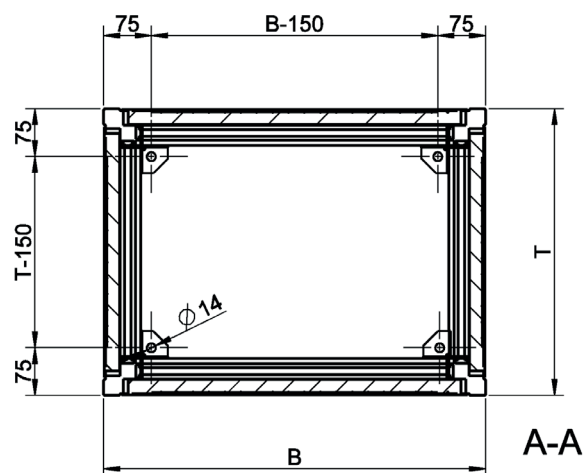


Top view



Floor fixing with aluminum brackets (standard)

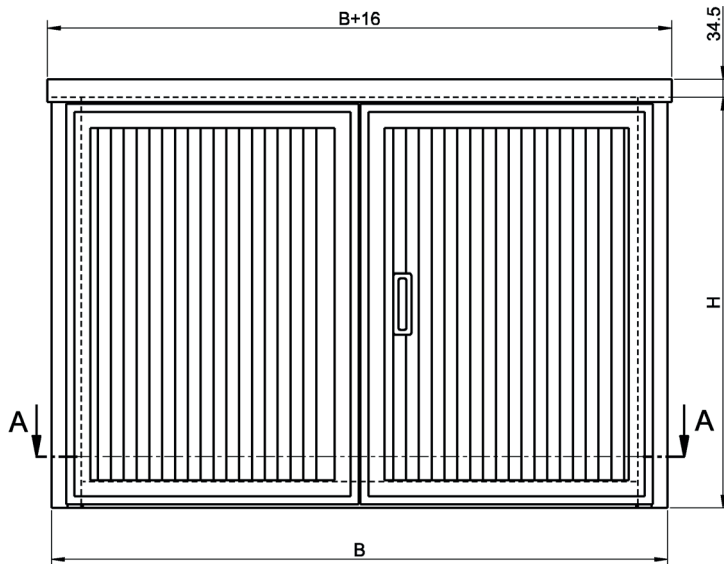
Top view



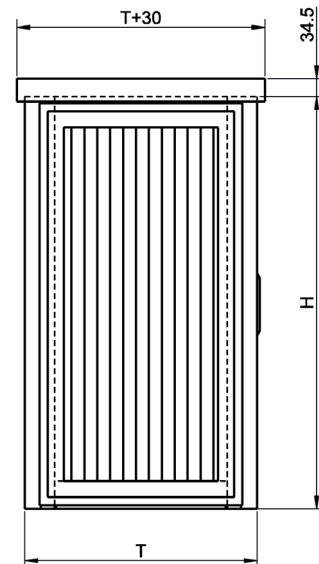
Floor fixing with CrNi brackets

# Standard design, 2-leaf, without plinth

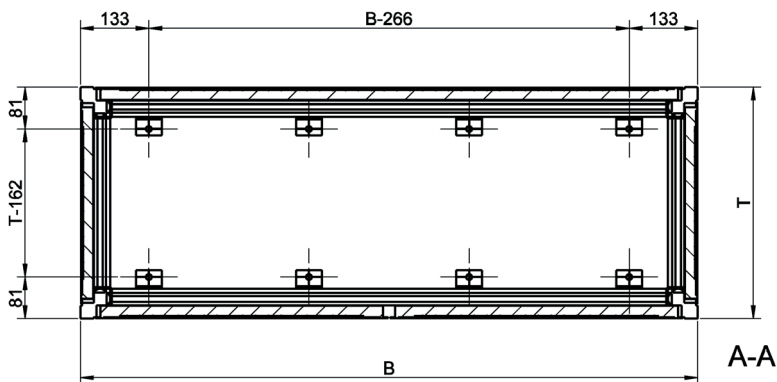
Front view



Side view from left



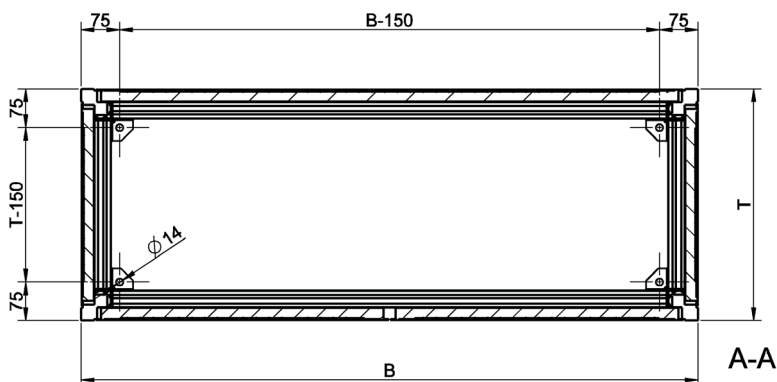
Top view



Number of floor fixing brackets:

B <	1000	4 brackets
B > =	1000	6 brackets
B > =	1600	8 brackets
B >	2000	10 brackets

Top view

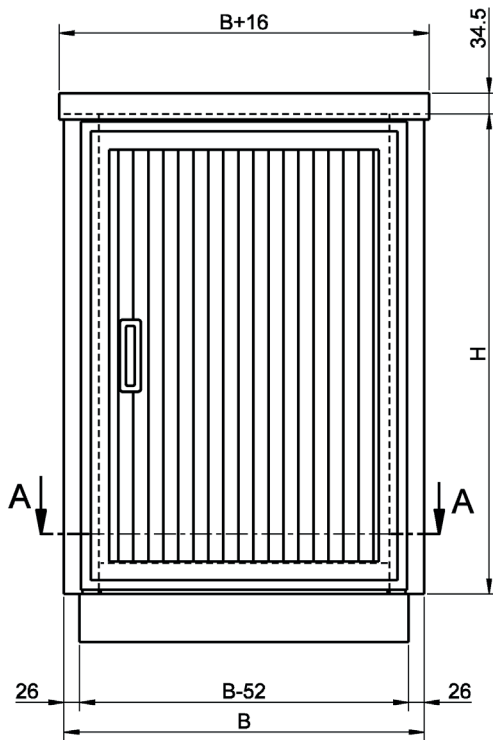


4 CrNi brackets

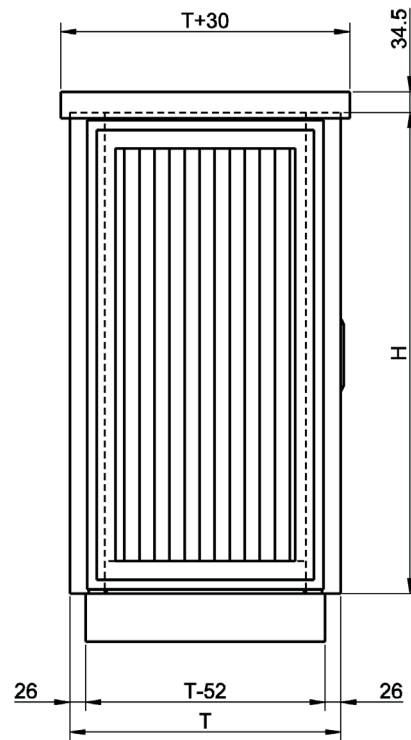
# Standard design, 1-leaf, with plinth

7

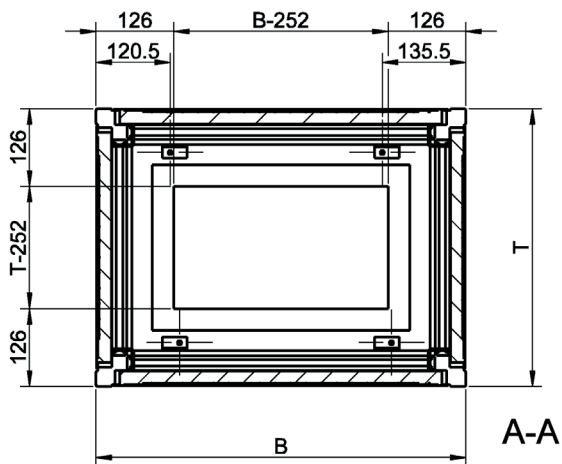
Front view



Side view from left

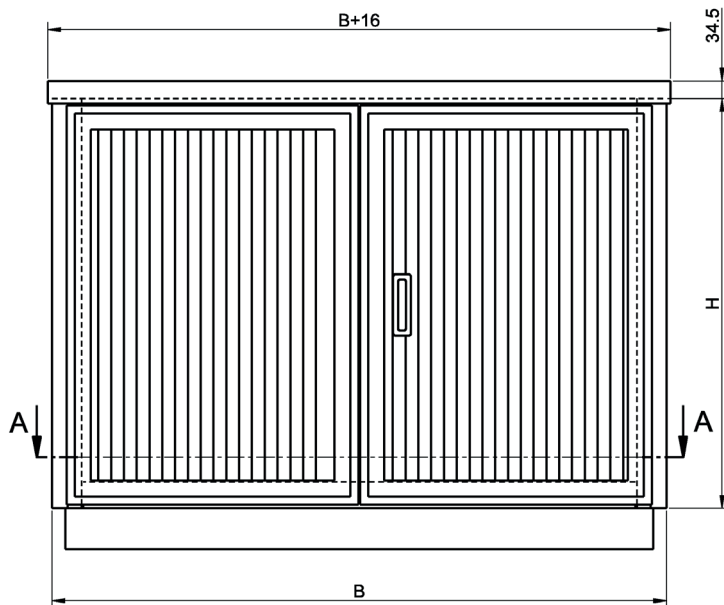


Top view

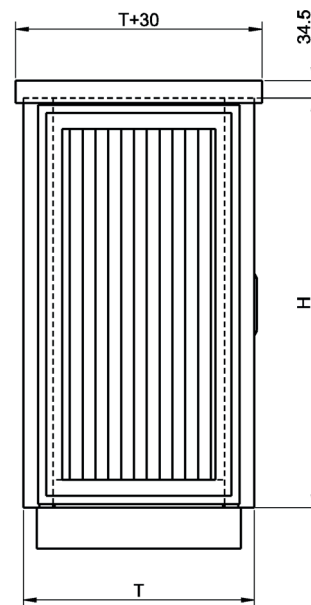


# Standard design, 2-leaf, with plinth

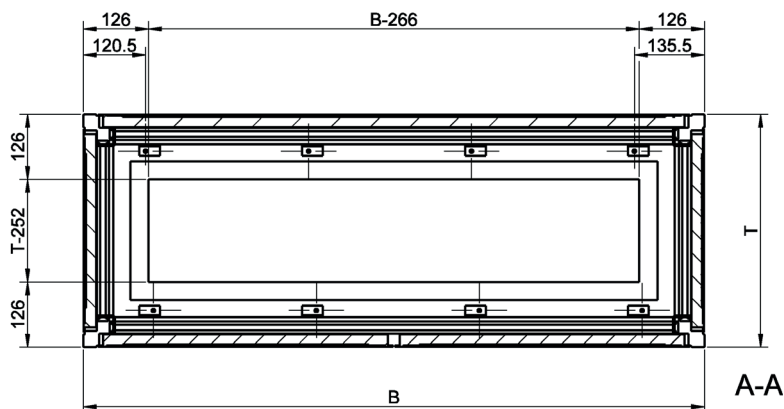
Front view



Side view from left



Top view



Number of floor fixing brackets:

$B <$	1000	4 brackets
$B \geq$	1000	6 brackets
$B \geq$	1600	8 brackets
$B >$	2000	10 brackets



[www.almatec.com](http://www.almatec.com)

Almatec AG  
Industriestrasse 12,  
6170 Schüpfheim, Switzerland  
Phone +41 41 485 77-77, Fax -88  
info@almatec.com

Almatec SA  
Ruelle de la Mottaz 7,  
1071 Chexbres, Switzerland  
Phone +41 21 946 03-00, Fax -03  
info@almatec.com

Almatec GmbH  
Im Löchel 2,  
35423 Lich-Eberstadt, Germany  
Phone +49 6004 808-0, Fax -149  
service@almatec.com

