

Datenblatt / Data Sheet

Steckernetzteil IP40 12V DC / 24V DC

Plug-in power supply 12V DC / 24V DC

- Mit 1.85m Kabel / With 1.85m cable



Technische Daten / technical data:

Bezeichnung / Description	Eigenschaft / Characteristic	
Artikelnummer / Item no.	66000130	66000131
DC Voltage in Volt (V):	12 V	24 V
Min. Load (A):	0 A	
Max. Load (A):	2 A	1 A
Tolerance in %:	± 5 %	
Ripple & Noise (max.):	120mV	240mV
Over Current Protection (A):	3~5.5A	1.5~4.5A
Over Voltage Protection (V):	14~16V	26~28V
Efficiency in %:	70 % min.	
Max. Power in Watt (W):	24 W	
Voltage (V):	100 ~ 240VAC	
Frequency:	47 ~ 63Hz	
Current :	1A @ 230VAC	
Surge Current max.:	60A @ 230VAC / 40A @ 115VAC @ 25°C ambient	
Leakage Current (mA):	<0.25mA	
Overload OCP	Fold back	
Over Voltage OVP	Voltage limiting	
Short Circuit	Yes, Output to Ground, Auto recovery when fault has been removed Short Current & Over Current can not exceed 8A max. after 1minute at nominal line input	
No Load Operation	Yes , to protect the power supply and system from damage	
Temperature	Operating: 0 ~ 40°C / Storage: Environment -20 ~ 85°C	
Humidity	Operating: 8% ~ 90% RH / Storage: 5% ~ 95% RH	
Cable	180cm (6ft.)	
Output Plug	Standard: 5.5 x 2.1 x 11mm (spring loaded center) or customer requirement	
Safety Standards:	TÜV EN60065 :2002 / IEC 60065	
EMI Conduction & Radiation:	EN55022 Class B / FCC part 15 subpart B Class B / EN61000-3-2(2000) EN61000-3-3(1995)+A1(2001)	
EMS Immunity:	IEC61000-4-2,5,8(2001) / IEC61000-4-3(2002) / IEC61000-4-6(2002)+A1(2003) / IEC61000-4-4,11(2004) EN55024(1998)+A1(2001)+A2(2003)	

Technische Änderungen und Irrtümer vorbehalten. Subject to technical changes and errors.

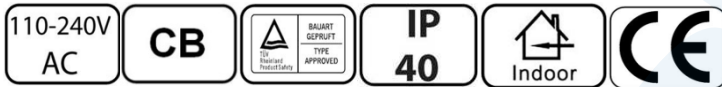
Vorläufig / preliminarily

Datum / Date: 11.2009 BS

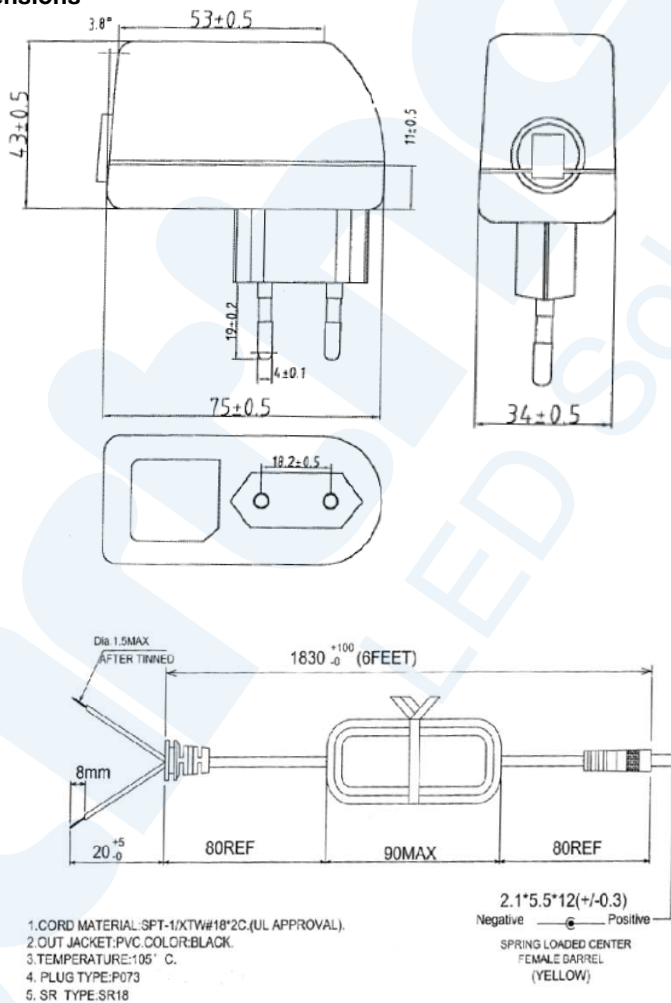
Revision: 1.1

Seite 1 von 2

Bezeichnung / Description	Eigenschaft / Characteristic	
Artikelnummer / Item no.	66000130	66000131
Setup time	7s max. @ AC low line Input and Output full load	
Holdup time	10ms @ AC nominal Input and Output full load	
Cooling	Free air convection	
Withstand Voltage	HI-POT B / I/P-O/P: 3KVAC / 10mA / 1 minute	
Power Consumption	max. 0.6W @ AC nominal Input and Output min. load	
Input Fuse	1A protected against power line surges and any abnormal conditions	
Vibration	Frequency 5-20-500 / 30 minutes - X,Y,Z axis - 1G	
MTBF:	> 35K hours	
Dimension in mm:	See Dimensions	
Wight :	N.W.: 143 g	



Abmaße / Dimensions



Technische Änderungen und Irrtümer vorbehalten. Subject to technical changes and errors.

Vorläufig / preliminarily

Datum / Date: 11.2009 BS

Revision: 1.1

Seite 2 von 2