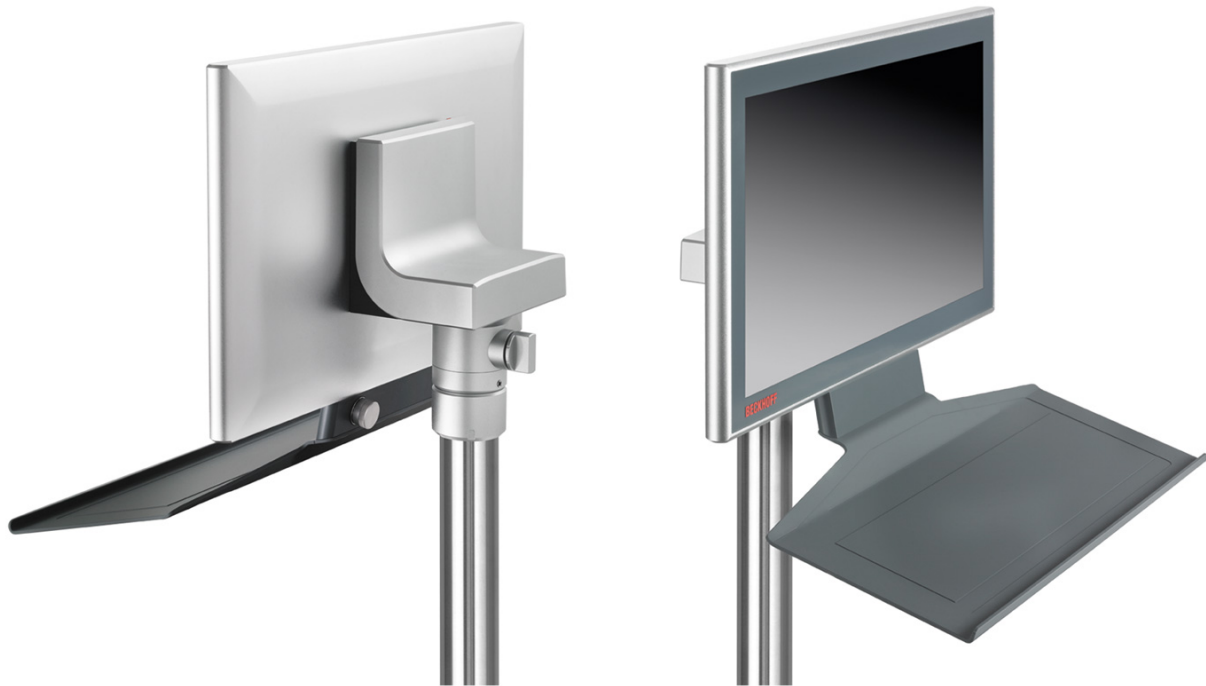
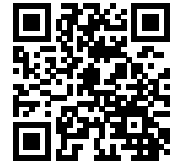


C9900-M406 | Keyboard shelf for CP3xxx multi-touch Control Panels and Panel PCs



i Product status: Regular delivery

The keyboard shelf at a Beckhoff Panel PC or Control Panel permits a standard PC keyboard to be placed in front of the Control Panel, allowing convenient operation during commissioning or software updates. During normal production, the machine operator can rest tools and other items here while using the multi-finger touch screen.

A USB socket is integrated at the back of the keyboard shelf for connecting the keyboard. Any keyboard USB cable excess can be wrapped around a bracket at the underside of the keyboard shelf.

The shelf is made of coated aluminum, and its design matches that of the Control Panel. The keyboard shelf has a width of 468 mm.

Product information

Ordering information

Ordering information	Keyboard shelf for CP3xxx
C9900-M406	Toolboard for keyboard or tools, mounted under a Control Panel or Panel PC CP3x12 up to CP3x24, with integrated USB socket IP65 at the back side, can only be ordered in combination with the Control Panel or Panel PC.