

GlobTek, Inc.
www.globtek.com
186 Veterans Drive,
Northvale, NJ 07647
Tel. (201) 784-1000
Fax (201) 784-0111

Drawing Title: GT-41132-6012-T3, ITE Power Supply, Efficiency Level: V, Case Color/Style: GlobTek Black, Desktop, Regulated Switchmode AC-DC, Input Rating: 100-240V~, 50-60 Hz, IEC 60320/C14, Output Rating: 60W, 12V@5A, Output Configuration: 1530 mm, 18/1C + Shield Cond, UL 1185, Female Barrel 5.5 * 2.5 * 11mm with internal Spring Clip and Locking Notch or Equal, Ferrite: Laird Ferrite Core P/N 28B0453-000 Overmold dimensions: 29.2(L)x OD 15.2mm, GlobTek Black, GT Cord # C0838, Pin Out: Center Positive (+V), Blades/Input Cord: Not Applicable, Approvals: C-Tick, CB, CCC, CE, China RoHS, Class I, CU Kazakhstan, cUL, GOST-R, IRAM, Israel, Korea, Level V, LPS, NEMKO, NOM, NrCAN, PSE, RoHS 2, Saudi, Singapore, South African, ST-Malaysi, Taiwan BSMI, TUV (Brazil), Ukraine, VCCI, WEEE

Model No. GT-41132-6012-T3

Part No. TR9CE5000LCPNRVB2338

Rev H

REVISION HISTORY

REV	DESCRIPTION	SUB	DATE	APPROVED
H	Add China RoHS 30	QA	02/24/2014	QA

In Addition to GlobTek Inc.'s renewed ISO9001:2008 - Quality Management System Certification, GlobTek Inc. is now certified to:

ISO13485:2003 - Medical Devices Quality Management System Certification

ISO14001:2004 - Environmental Management System Certification

ISO Certificates are available On-Line at <http://www.globtek.com/iso-certificates.php>

Customer Approval of Specification:

Please approve, sign and send back to GlobTek so we can complete order processing.

A delay in receipt of this form will delay delivery schedule.

Company Name:

Customer P/N:

Quote Number:

Date:

Authorized Representative Name:

Authorized Representative Signature:

Footnote:

GlobTek Inc. will not be liable for the safety and performance of these power supplies if unauthorized access and repair occurs. End user should consult applicable UL, CSA or EN standards for proper installation instruction.

Limitation of Use:

GlobTek product are not authorized for use as mission critical components in life support hazardous environment, nuclear or aircraft applications without prior written approval from the CEO of GlobTek Inc.

Contents of this document are subject to change without prior notice.

GT-41132-6012-T3, 60W, 12V@5A, Desktop, Regulated Switchmode AC-DC

PROPRIETARY INFORMATION

PROPRIETARY OF GLOBTEK, INC. ANY REPRODUCTION, DISCLOSURE OR USE OF THIS DRAWING, IN WHOLE OR IN PART, IS HEREBY PROHIBITED EXCEPT AS SPECIFIED IN WRITING BY GLOBTEK, INC.

msant /02/27/2014 2:08:43 PM

GlobTek, Inc.
www.globtek.com
186 Veterans Drive,
Northvale, NJ 07647
Tel. (201) 784-1000
Fax (201) 784-0111

Drawing Title: GT-41132-6012-T3, ITE Power Supply, Efficiency Level: V, Case Color/Style: GlobTek Black, Desktop, Regulated Switchmode AC-DC, Input Rating: 100-240V~, 50-60 Hz, IEC 60320/C14, Output Rating: 60W, 12V@5A, Output Configuration: 1530 mm, 18/1C + Shield Cond, UL 1185, Female Barrel 5.5 * 2.5 * 11mm with internal Spring Clip and Locking Notch or Equal, Ferrite: Laird Ferrite Core P/N 28B0453-000 Overmold dimensions: 29.2(L)x OD 15.2mm, GlobTek Black, GT Cord # C0838, Pin Out: Center Positive (+V), Blades/Input Cord: Not Applicable, Approvals: C-Tick, CB, CCC, CE, China RoHS, Class I, CU Kazakhstan, cUL, GOST-R, IRAM, Israel, Korea, Level V, LPS, NEMKO, NOM, NrCAN, PSE, RoHS 2, Saudi, Singapore, South African, ST-Malaysi, Taiwan BSMI, TUV (Brazil), Ukraine, VCCI, WEEE

Model No. GT-41132-6012-T3

Part No. TR9CE5000LCPNRVB2338

Rev H

POWER SUPPLY INFORMATION

TYPE: Desktop
TECHNOLOGY: Regulated Switchmode AC-DC
CASE COLOR: GlobTek Black
NAMEPLATE RATED INPUT: 100-240V~, 50-60 Hz, 1.5A
INPUT CONFIG: IEC 60320/C14
WATTS: 60.0
VOLTS OUT: 12
CURRENT OUT (Amps): 5
BLADE/CORD INCLUDED: N/A: Not Applicable
BLADE/CORD INSTALLED: N/A: Not Applicable
EFFICIENCY LEVEL: V
OUTPUT CONFIGURATION: 1530 mm, 18/1C + Shield Cond, UL 1185, Female Barrel 5.5 * 2.5 * 11mm with internal Spring Clip and Locking Notch or Equal, Ferrite: Laird Ferrite Core P/N 28B0453-000 Overmold dimensions: 29.2(L)x OD 15.2mm, GlobTek Black, GT Cord # C0838
CONNECTOR PIN OUT: Center Positive (+V)
LABEL SPECS: Standard GT,L-1186
PACK SPEC: Standard DT w/PE BAG, Individually Box

NOTES / DEVIATIONS:

CRITICAL!!!

1. FERRITE EMI CORE BROADBAND LAIRD P/N: 28B0453-000. NO EQUIVALENT.
2. FERRITE CORE FROM CONNECTOR IS 60mm +10mm/-10mm.

DIMENSIONS ARE IN MM UNLESS SPECIFIED OTHERWISE.

ELECTRICAL SPECIFICATIONS

A) ELECTRICAL SPECIFICATIONS:

01. Input Voltage: Specified 90-264 Vac, Nameplate rated: 100-240Vac
02. Input Frequency: Specified 47-63 Hz, Nameplate rated 50-60Hz
03. Output Regulation: +/- 5% measured at the output connector
04. Line Voltage Regulation: +/- 1% typical measured at output connector
05. Output Ripple (Vp-p): +/-1% or 150 mV whichever is greater, measured at 20 MHz bandwidth with 0.1 uf ceramic capacitor in parallel with 10 uf electrolytic capacitor connected at the end of the output connector at nominal line
06. Turn-ON/OFF Overshoot: 5% maximum, 1 mS typical recovery time for 25% to 50% step load
07. Turn-ON Delay: 1 Second Typical
08. Hold-Up Time: 8 mS typical @ nominal input voltage and full load
09. Inrush Current: 30/60A maximum cold start @ 115/230 Vac input
10. Switching Frequency: 65 KHz typical

B) PROTECTION

01. Over-Voltage: Electronically Protected Zener clamp across the output
02. Short Circuit: Electronically Protected unit will auto recover upon removal of fault
03. Input Protection: Input line fusing

C) SAFETY

01. Dielectric Withstand Voltage: 4242Vdc from primary to secondary
02. Earth Leakage Current: <3.5 mA at 240Vac input voltage

PROPRIETARY INFORMATION

PROPRIETARY OF GLOBTEK, INC. ANY REPRODUCTION, DISCLOSURE OR USE OF THIS DRAWING, IN WHOLE OR IN PART, IS HEREBY PROHIBITED EXCEPT AS SPECIFIED IN WRITING BY GLOBTEK, INC.

msant /02/27/2014 2:08:43 PM

GlobTek, Inc.
www.globtek.com
186 Veterans Drive,
Northvale, NJ 07647
Tel. (201) 784-1000
Fax (201) 784-0111

Drawing Title: GT-41132-6012-T3, ITE Power Supply, Efficiency Level: V, Case Color/Style: GlobTek Black, Desktop, Regulated Switchmode AC-DC, Input Rating: 100-240V~, 50-60 Hz, IEC 60320/C14, Output Rating: 60W, 12V@5A, Output Configuration: 1530 mm, 18/1C + Shield Cond, UL 1185, Female Barrel 5.5 * 2.5 * 11mm with internal Spring Clip and Locking Notch or Equal, Ferrite: Laird Ferrite Core P/N 28B0453-000 Overmold dimensions: 29.2(L)x OD 15.2mm, GlobTek Black, GT Cord # C0838, Pin Out: Center Positive (+V), Blades/Input Cord: Not Applicable, Approvals: C-Tick, CB, CCC, CE, China RoHS, Class I, CU Kazakhstan, cUL, GOST-R, IRAM, Israel, Korea, Level V, LPS, NEMKO, NOM, NrCAN, PSE, RoHS 2, Saudi, Singapore, South African, ST-Malaysi, Taiwan BSMI, TUV (Brazil), Ukraine, VCCI, WEEE

Model No. GT-41132-6012-T3

Part No. TR9CE5000LCPNRVB2338

Rev H

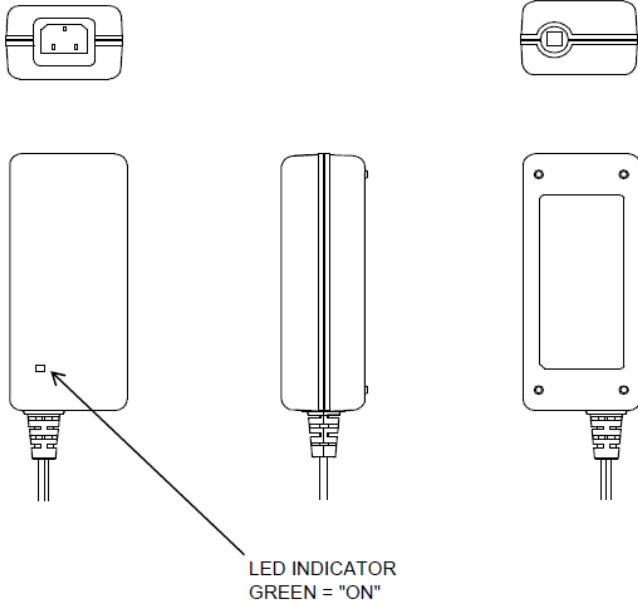
- 03. Touch Current: <0.25mA @ 240Vac input voltage
- 04. ROHS 2: Complies with EU 2011/65/EU and China SJ/T 11363-2006
- 05. Earth continuity test: 0.1 Ohm

D) OTHER:

- 01. MTBF: 200,000 Hours @ 25°C ambient temperature
- 02. Operating Temperature: 0°C to 40°C ambient temperature
- 03. Humidity: 0% to 90% relative humidity
- 04. Storage Temperature: -10°C to 80°C
- 05. Cooling: Convection
- 06. ROHS 2: Complies with EU 2011/65/EU and China SJ/T 11363-2006

E) ENCLOSURE

- 01. Housing: High impact plastic, 94V0 polycarbonate, non-vented
- 02. Size: 116*50*33 +/-1.0 mm
- 03. Markings: Label and/or Pad Printed and/or Molded in the case



GlobTek, Inc.
 www.globtek.com
 186 Veterans Drive,
 Northvale, NJ 07647
 Tel. (201) 784-1000
 Fax (201) 784-0111

Drawing Title: GT-41132-6012-T3, ITE Power Supply, Efficiency Level: V, Case Color/Style: GlobTek Black, Desktop, Regulated Switchmode AC-DC, Input Rating: 100-240V~, 50-60 Hz, IEC 60320/C14, Output Rating: 60W, 12V@5A, Output Configuration: 1530 mm, 18/1C + Shield Cond, UL 1185, Female Barrel 5.5 * 2.5 * 11mm with internal Spring Clip and Locking Notch or Equal, Ferrite: Laird Ferrite Core P/N 28B0453-000 Overmold dimensions: 29.2(L)x OD 15.2mm, GlobTek Black, GT Cord # C0838, Pin Out: Center Positive (+V), Blades/Input Cord: Not Applicable, Approvals: C-Tick, CB, CCC, CE, China RoHS, Class I, CU Kazakhstan, cUL, GOST-R, IRAM, Israel, Korea, Level V, LPS, NEMKO, NOM, NrCAN, PSE, RoHS 2, Saudi, Singapore, South African, ST-Malaysi, Taiwan BSMI, TUV (Brazil), Ukraine, VCCI, WEEE

Model No. GT-41132-6012-T3

Part No. TR9CE5000LCPNRVB2338

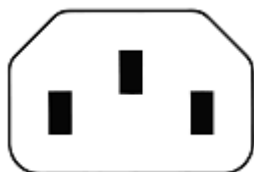
Rev H

INPUT CONFIGURATION

Blades/Cord Included: N/A: Not Applicable

Blades/Cord Installed: N/A: Not Applicable

IEC 60320/C14 AC Inlet Connector, Class I, Earth Ground



Mates with IEC 60320/C13 Plug

Standard Cordsets <http://en.globtek.com/standard-cordsets.php>

Below are standard cordsets which are "not included" (unless stated above); these can be purchased separately or packaged with the power supply. Contact your Sales Engineer if the style required is not shown below. Many more available in different lengths, colors or cable material.

GlobTek P/N	Length	Country	Description
1191063F0701(R) to IEC 320/C13	3 FT	North American Hospital	3 CONDUCTOR: SJT 18/3, 3 Ft., BLACK, UL/CSA, HOSPITAL NEMA 5-15P
1191068F0701(R) to IEC 320/C13	8 FT	North American Hospital	3 CONDUCTOR: SJT 18/3, 8 Ft., BLACK, UL/CSA, HOSPITAL NEMA 5-15P
3021453F701(R) 320/C13	3 FT	North American	3 CONDUCTOR: SVT 18/3, 3', BLACK, UL/CSA, NEMA 5-15P to IEC
3021106F701(R) 320/C13	6 FT	North American	3 CONDUCTOR: SPT-1 18/3, 6', BLACK, UL/CSA, NEMA 5-15P to IEC
3021457F701(R) 320/C13	7 FT	North American	3 CONDUCTOR: SVT 18/3, 7', BLACK, UL/CSA, NEMA 5-15P to IEC
3021876F7701(R) to IEC 320/C13	7 FT	North American	3 CONDUCTOR: SVT, Shielded, 18/3, 6' 7", BLACK, UL/CSA, NEMA 5-15P
23144272M5701-T(R)	2.5 M	European	3 CONDUCTOR H05VVVF, 3x1.00, 2.5M, CEE 7/7 to IEC 320/C13
PZ0800100-2M5BK13-H(R)	2.5 M	UK / Ireland	3 CONDUCTOR: H05VVVF, 3x1.0, 2.5M, BSI, BS1363 to IEC 320/C13
5502022M5701(R)	2.5 M	Australia	3 CONDUCTOR: GTSA 3x1.0, 2.5M, SAA, AS3112 to IEC 320/C13
3003068F2701(R)	2.5 M	Japan	3 CONDUCTOR: VCTF, 3x 2.0, 2.5M, PSE, JIS8303 to IEC 320/C13
23214272M5701(R)	2.5 M	Swiss	3 CONDUCTOR: H05VVVF 3x1.0, 2.5M, SEV, SEV 1011 to IEC 320/C13
23024272M5701(R) 320/C13	2.5 M	Italy	3 CONDUCTOR: H05VVVF 3x 1.00, 2.5M, IMQ, CEI 23-16/VII to IEC
G8014262M5701(R) 320/C13	2.5 M	Demark	3 CONDUCTOR: H05VVVF 3x 1.00, 2.5M, D, AFSNIT 107-2-D1 to IEC
2084272M5701(R)	2.5 M	India/ Africa	3 CONDUCTOR: H05VVVF 3x1.0, 2.5M, BS546 to IEC 320/C13
6023602M5701(R) 320/C13	2.5 M	China	3 CONDUCTOR: RVV, 3X1.0mm2, 2.5M, CCC, GB2099.1 (1996) to IEC
377C2472M5701(R)	2.5 M	Israel	3 CONDUCTOR: H05VVVF 3x 1.00, 2.5M, ISRAEL SI-32 to IEC 320/C13
7055002M5701(R)	2.5 M	International	3 CONDUCTOR: H05VVVF 3x 1.00, 2.5M, IEC320/C14 to IEC 320/C13

PROPRIETARY INFORMATION

PROPRIETARY OF GLOBTEK, INC. ANY REPRODUCTION, DISCLOSURE OR USE OF THIS DRAWING, IN WHOLE OR IN PART, IS HEREBY PROHIBITED EXCEPT AS SPECIFIED IN WRITING BY GLOBTEK, INC.

msant /02/27/2014 2:08:43 PM

GlobTek, Inc.
 www.globtek.com
 186 Veterans Drive,
 Northvale, NJ 07647
 Tel. (201) 784-1000
 Fax (201) 784-0111

Drawing Title: GT-41132-6012-T3, ITE Power Supply, Efficiency Level: V, Case Color/Style: GlobTek Black, Desktop, Regulated Switchmode AC-DC, Input Rating: 100-240V~, 50-60 Hz, IEC 60320/C14, Output Rating: 60W, 12V@5A, Output Configuration: 1530 mm, 18/1C + Shield Cond, UL 1185, Female Barrel 5.5 * 2.5 * 11mm with internal Spring Clip and Locking Notch or Equal, Ferrite: Laird Ferrite Core P/N 28B0453-000 Overmold dimensions: 29.2(L)x OD 15.2mm, GlobTek Black, GT Cord # C0838, Pin Out: Center Positive (+V), Blades/Input Cord: Not Applicable, Approvals: C-Tick, CB, CCC, CE, China RoHS, Class I, CU Kazakhstan, cUL, GOST-R, IRAM, Israel, Korea, Level V, LPS, NEMKO, NOM, NrCAN, PSE, RoHS 2, Saudi, Singapore, South African, ST-Malaysi, Taiwan BSMI, TUV (Brazil), Ukraine, VCCI, WEEE

Model No. GT-41132-6012-T3

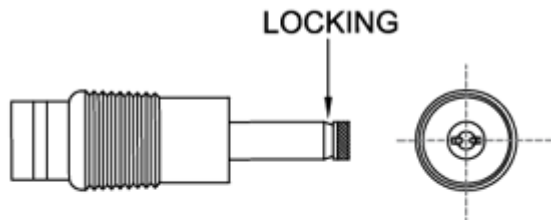
Part No. TR9CE5000LCPNRVB2338

Rev H

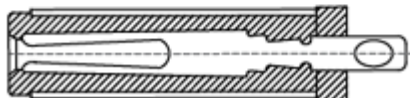
OUTPUT CORD AND CONNECTOR: LCL/C0838

ACTUAL CONNECTORS, OVERMOLDS, FERRITES MAY VARY SLIGHTLY FROM THE PICTURE BELOW

CABLE TYPE	UL 1185
CABLE LENGTH (MM)	1530
CABLE TOLERANCE (MM)	+/-100
WIRE GAUGE (AWG)	18
CONDUCTORS	1C + Shield
HANK DIMENSION (mm)	90 +/-10
CABLE / CONNECTOR OVERMOLD COLOR	GlobTek Black
FERRITE TYPE / DIMENSION	Laird Ferrite Core P/N 28B0453-000 Overmold dimensions: 29.2(L)x OD 15.2mm
FERRITE # OF TURNS	1 Pass thru core
FERRITE DIMENSION FROM STRAIN RELIEF	N/A
FERRITE DIMENSION FROM PLUG	60 +/-10
PLUG TYPE	Female Barrel 5.5 * 2.5 * 11mm with internal Spring Clip and Locking Notch or Equal
OVER MOLD ORIENTATION	Straight
CONNECTOR PIN OUT:	Center Positive (+V)
ADDITIONAL REQUIREMENTS	



Internal View of connector



ADDITIONAL OUTPUT PLUG OPTIONS ARE AVAILABLE AT <http://www.globtek.com/connectors.php>
 STANDARD PLUGS AND CONNECTORS CAN BE SEEN ONLINE AT <http://www.globtek.com/connectors.php>

GlobTek, Inc.
 www.globtek.com
 186 Veterans Drive,
 Northvale, NJ 07647
 Tel. (201) 784-1000
 Fax (201) 784-0111

Drawing Title: GT-41132-6012-T3, ITE Power Supply, Efficiency Level: V, Case Color/Style: GlobTek Black, Desktop, Regulated Switchmode AC-DC, Input Rating: 100-240V~, 50-60 Hz, IEC 60320/C14, Output Rating: 60W, 12V@5A, Output Configuration: 1530 mm, 18/1C + Shield Cond, UL 1185, Female Barrel 5.5 * 2.5 * 11mm with internal Spring Clip and Locking Notch or Equal, Ferrite: Laird Ferrite Core P/N 28B0453-000 Overmold dimensions: 29.2(L)x OD 15.2mm, GlobTek Black, GT Cord # C0838, Pin Out: Center Positive (+V), Blades/Input Cord: Not Applicable, Approvals: C-Tick, CB, CCC, CE, China RoHS, Class I, CU Kazakhstan, cUL, GOST-R, IRAM, Israel, Korea, Level V, LPS, NEMKO, NOM, NrCAN, PSE, RoHS 2, Saudi, Singapore, South African, ST-Malaysi, Taiwan BSMI, TUV (Brazil), Ukraine, VCCI, WEEE

Model No. GT-41132-6012-T3

Part No. TR9CE5000LCPNRVB2338

Rev H

LABEL:L-1186

LABEL P/N: Standard GT
 MATERIAL: Flat Thermal Transfer, Imprintable, Polyester Label and/or Pad Printed and/or Molded in the case
 BACKGROUND COLOR:Black
 TEXT COLOR: White or Silver
 LABEL WIDTH (mm): 33.3
 LABEL HEIGHT (mm): 75.3

Below is the minimum information which will appear on the label. NOTE: in the logo area additional/actual positioning of symbols and text is subjected to change as per agency updates/requirements or additional model approvals become available. Agency logos may be in Logo area on the label or molded into the case housing outside the label area. Information will be shown via Label and/or Pad Printed and/or Molded in the case



A=ITE Power Supply
 B=P/N: (料号) TR9CE5000LCPNRVB2338
 C=Model : (型号) GT-41132-6012-T3
 D=Input : (输入) 100-240V~, 50-60 Hz, 1.5A
 E=Output : (输出) 12 V --- 5 A

AGENCY ONLINE DOCUMENTS <http://www.globtek.info/certs/GT-41132-T2-T3-T3A/>


Logo Approvals

Logo

 R32282

Description
 BSMI Taiwan GT-41132-6012-T3 (12V designs only);
 CNS143361-1 (99) CNS13438 (95)

<http://www.bsmi.gov.tw/wSite/ct?xItem=4072&ctNode=8167=2>

 Pour matériel de informatique technologique.
 N18647
 SAA120378EA

C-Tick GT-41132-T3(A) N18647 SAA120378EA

No Logo

CB Amendment + 45°C at 40 Watts

GlobTek, Inc.
www.globtek.com
186 Veterans Drive,
Northvale, NJ 07647
Tel. (201) 784-1000
Fax (201) 784-0111

Drawing Title: GT-41132-6012-T3, ITE Power Supply, Efficiency Level: V, Case Color/Style: GlobTek Black, Desktop, Regulated Switchmode AC-DC, Input Rating: 100-240V~, 50-60 Hz, IEC 60320/C14, Output Rating: 60W, 12V@5A, Output Configuration: 1530 mm, 18/1C + Shield Cond, UL 1185, Female Barrel 5.5 * 2.5 * 11mm with internal Spring Clip and Locking Notch or Equal, Ferrite: Laird Ferrite Core P/N 28B0453-000 Overmold dimensions: 29.2(L)x OD 15.2mm, GlobTek Black, GT Cord # C0838, Pin Out: Center Positive (+V), Blades/Input Cord: Not Applicable, Approvals: C-Tick, CB, CCC, CE, China RoHS, Class I, CU Kazakhstan, cUL, GOST-R, IRAM, Israel, Korea, Level V, LPS, NEMKO, NOM, NrCAN, PSE, RoHS 2, Saudi, Singapore, South African, ST-Malaysi, Taiwan BSMI, TUV (Brazil), Ukraine, VCCI, WEEE

Model No. GT-41132-6012-T3

Part No. TR9CE5000LCPNRVB2338

Rev H

No Logo



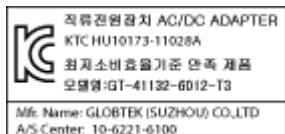
No Logo



адаптер питания



ITE פסק יום



EFFICIENCY LEVEL

LPS



Apparatet må tilkoples
jerolst stikkontakt



Fuente de alimentación de ITE



RoHS 2

إمدادات الطاقة



No Logo

CB Certificate IEC 60950-1:2005 (2nd Edition), Am 1: 2009, CB report IEC 60950-1:2005 (2nd Edition), Am 1: 2009 and EN 60950-1:2006 + Am 1:2010 + Am 11:2009 + Am 12:2011

CCC certificate: GB4943.1-2011 GB9254-2008 GB17625.1-2012,
仅适用于在海拔2000m以下地区使用

CE/LVD + 45°C at 40 Watts

CE Mark: tested to comply with EN55022:2006/A1:2007 Class B, EN610003-2, EN610003-3 including EN61000-4-2, EN61000-4-3, EN61000-4-4, EN61000-4-5, EN61000-4-6N EN61000-4-11; EMI: Complies with EN55011 CLASS B and FCC Part 15B

CHINA SJ/T 11363-2006, China RoHS Chart: <http://en.globtek.com/globtek-rohs.php>

Class I Earth Ground

CU Kazakhstan Certificate

GOST-R mark for Russia (Document:

http://www.globtek.com/html/iso_certificates/GT_GOST-R.pdf)

Indoor Use Only

IRAM certificate to IEC 60950 + A1:2009

Electric strength Of Israel Standard SI 60950 Part 1 – Safety of information technology equipment: General requirements, Feb. 2012. (12 Volts Only)

HU10173-11028A GT-41132-6012-T3 (12V only)

Efficiency: complies to section 301 of Energy Independence and Security Act (EISA) complies with Energy Star tier 2 (North America), ECP tier 2 (China), MEPS tier 2 (Australia), Code of Conduct (Europe)

Limited Power Source

Nemko w Class I Warning Nemko EN60950-1:2006, A11, A1, A12

NOM (Mexico) to NOM-001-SCFI-1993 (12 Volts only)

Natural Resources Canada (NRCAN): CSA Standard C381.1-08, QSP NRCAN EEV1191;

<http://shop.csa.ca/en/canada/energy-efficiency/canca-c3811-08/invt/27024802008>

JAPAN PSE CQC Globtek Inc TO J60950 AND J55022

RoHS 2: Complies with EU 2011/65/EU and CHINA SJ/T 11363-2006

<http://www.ce-mark.com/Rohs%20final.pdf>

Saudi Arabia approval to IEC 60950

Singapore 120472-11 GT-41132-6012-T3 60950-1

South Africa approval to CISPR 22 Class B CISPR 24 IEC 61000-3-2 IEC 61000-3-3

GlobTek, Inc.
 www.globtek.com
 186 Veterans Drive,
 Northvale, NJ 07647
 Tel. (201) 784-1000
 Fax (201) 784-0111

Drawing Title: GT-41132-6012-T3, ITE Power Supply, Efficiency Level: V, Case Color/Style: GlobTek Black, Desktop, Regulated Switchmode AC-DC, Input Rating: 100-240V~, 50-60 Hz, IEC 60320/C14, Output Rating: 60W, 12V@5A, Output Configuration: 1530 mm, 18/1C + Shield Cond, UL 1185, Female Barrel 5.5 * 2.5 * 11mm with internal Spring Clip and Locking Notch or Equal, Ferrite: Laird Ferrite Core P/N 28B0453-000 Overmold dimensions: 29.2(L)x OD 15.2mm, GlobTek Black, GT Cord # C0838, Pin Out: Center Positive (+V), Blades/Input Cord: Not Applicable, Approvals: C-Tick, CB, CCC, CE, China RoHS, Class I, CU Kazakhstan, cUL, GOST-R, IRAM, Israel, Korea, Level V, LPS, NEMKO, NOM, NrCAN, PSE, RoHS 2, Saudi, Singapore, South African, ST-Malaysi, Taiwan BSMI, TUV (Brazil), Ukraine, VCCI, WEEE

Model No. GT-41132-6012-T3

Part No. TR9CE5000LCPNRVB2338

Rev H

No Logo



FONTE DE ALIMENTAÇÃO DE ITE



Center Positive (+V)

ST-Malaysia GT-41132-6012-T3 EN60950-1

TUV (Brazil) to IEC 60950-1:2005 (12-24 Volts)

Ukraine UKRSepr (Document: www.globtek.com/html/iso_certificates/GT_Ukraine.pdf)

UL cULus LISTED 4MU8 E341351

Japan: Voluntary Control Council for Interference (VCCI)

WEEE: Complies with EU 2012/19/EU (http://ec.europa.eu/environment/waste/weee/index_en.htm)

GlobTek, Inc.
www.globtek.com
186 Veterans Drive,
Northvale, NJ 07647
Tel. (201) 784-1000
Fax (201) 784-0111

Drawing Title: GT-41132-6012-T3, ITE Power Supply, Efficiency Level: V, Case Color/Style: GlobTek Black, Desktop, Regulated Switchmode AC-DC, Input Rating: 100-240V~, 50-60 Hz, IEC 60320/C14, Output Rating: 60W, 12V@5A, Output Configuration: 1530 mm, 18/1C + Shield Cond, UL 1185, Female Barrel 5.5 * 2.5 * 11mm with internal Spring Clip and Locking Notch or Equal, Ferrite: Laird Ferrite Core P/N 28B0453-000 Overmold dimensions: 29.2(L)x OD 15.2mm, GlobTek Black, GT Cord # C0838, Pin Out: Center Positive (+V), Blades/Input Cord: Not Applicable, Approvals: C-Tick, CB, CCC, CE, China RoHS, Class I, CU Kazakhstan, cUL, GOST-R, IRAM, Israel, Korea, Level V, LPS, NEMKO, NOM, NrCAN, PSE, RoHS 2, Saudi, Singapore, South African, ST-Malaysi, Taiwan BSMI, TUV (Brazil), Ukraine, VCCI, WEEE

Model No. GT-41132-6012-T3

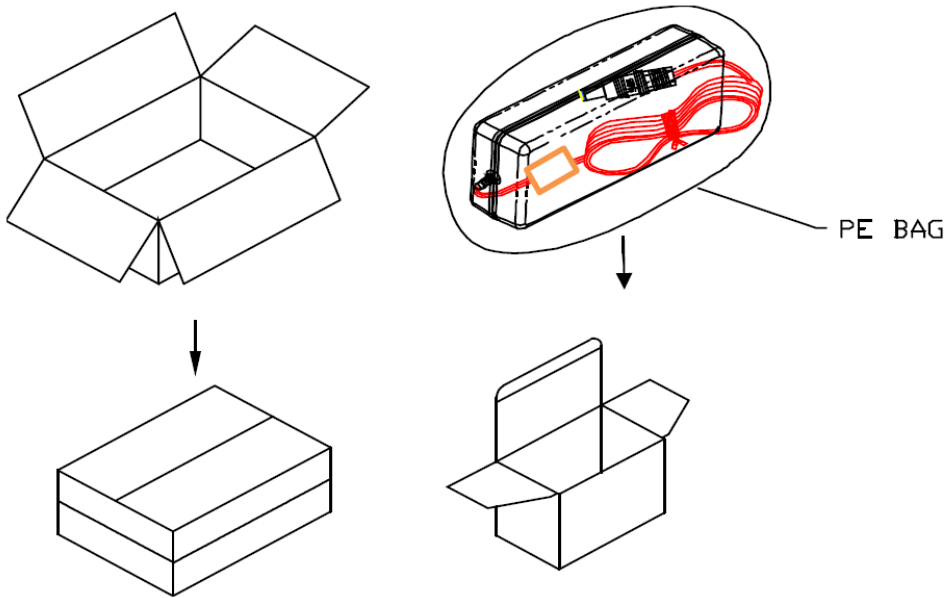
Part No. TR9CE5000LCPNRVB2338

Rev H

PACKAGING

Packing Spec P/N: Standard DT w/PE BAG, Individually Box
Box Qty: 45.0
Gift Box Size (mm): 140*60*50
Gift Box Color: White
Master Carton Size (mm): 440*323*180
Master GW (Kg): 15.6 kg
BLADES INCLUDED: N/A: Not Applicable
BLADE/CORD INSTALLED: N/A: Not Applicable

If specific packaging is required, this section must specify all requirements and note "no exceptions". If this section does not specify packaging, it is subject to change without notice at GlobTek's discretion



GlobTek, Inc.
www.globtek.com
186 Veterans Drive,
Northvale, NJ 07647
Tel. (201) 784-1000
Fax (201) 784-0111

Drawing Title: GT-41132-6012-T3, ITE Power Supply, Efficiency Level: V, Case Color/Style: GlobTek Black, Desktop, Regulated Switchmode AC-DC, Input Rating: 100-240V~, 50-60 Hz, IEC 60320/C14, Output Rating: 60W, 12V@5A, Output Configuration: 1530 mm, 18/1C + Shield Cond, UL 1185, Female Barrel 5.5 * 2.5 * 11mm with internal Spring Clip and Locking Notch or Equal, Ferrite: Laird Ferrite Core P/N 28B0453-000 Overmold dimensions: 29.2(L)x OD 15.2mm, GlobTek Black, GT Cord # C0838, Pin Out: Center Positive (+V), Blades/Input Cord: Not Applicable, Approvals: C-Tick, CB, CCC, CE, China RoHS, Class I, CU Kazakhstan, cUL, GOST-R, IRAM, Israel, Korea, Level V, LPS, NEMKO, NOM, NrCAN, PSE, RoHS 2, Saudi, Singapore, South African, ST-Malaysi, Taiwan BSMI, TUV (Brazil), Ukraine, VCCI, WEEE

Model No. GT-41132-6012-T3

Part No. TR9CE5000LCPNRVB2338

Rev H

INSTRUCTION SHEET

N/A