

BVT AD 24 (918 402)

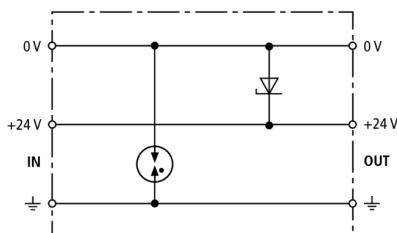
EMC protection of PLC 24 V power supply systems

Extremely low protection level

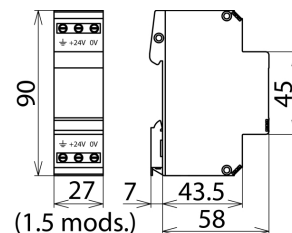
For installation in conformity with the lightning protection zones concept at the boundaries from 1 – 2 and higher



Figure without obligation



Basic circuit diagram BVT AD 24



Dimension drawing BVT AD 24

DIN rail mounted surge arrester for EMC protection of electronic components with d.c. voltage supply such as Siemens SPS S7-300. Since a unipolar diode is used, the polarity of the operating voltage must be observed.

Type Part No.	BVT AD 24 918 402
SPD class	TYPE 2 P1
Nominal d.c. voltage (U_N)	24 V
Max. continuous operating d.c. voltage (U_C)	35 V
Nominal current (I_L)	10 A
C2 Total nominal discharge current (8/20 μ s) (I_n)	2 kA
C2 Nominal discharge current (8/20 μ s) per line (I_n)	1 kA
Voltage protection line-line for I_n C2 (U_p)	≤ 70 V
Voltage protection level line-PG for I_n C2 (U_p)	≤ 700 V
Voltage protection level line-line at 1 kV/ μ s C3 (U_p)	≤ 50 V
Voltage protection level line-PG at 1 kV/ μ s C3 (U_p)	≤ 700 V
Capacitance line-line (C)	≤ 7 nF
Capacitance line-PG (C)	≤ 10 pF
Operating temperature range	-40°C...+80°C
Degree of protection	IP 20
For mounting on	35 mm DIN rails acc. to EN 60715
Connection (input/output)	screw / screw
Cross-sectional area, solid	0.5 - 4.0 mm ²
Cross-sectional area, flexible	0.5 - 4.0 mm ²
Tightening torque (terminals)	0.8 Nm
Earthing via	screw terminal
Enclosure material	thermoplastic, UL 94 V-0
Colour	yellow
Test standards	IEC 61643-21 / EN 61643-21, UL 497B
Approvals	CSA, GOST, UL
Weight	120,1 g
Customs tariff number	85363010
GTIN	4013364077645
PU	1 pc(s)

We reserve the right to introduce changes in performance, configuration and technology, dimensions, weights and materials in the course of technical progress. The figures are shown without obligation.