

LED-13UD-T-OS
Cabinet light
with fixed door contact switch

- Can be used from 600 mm cabinet width and higher
- Front mounting from below, (e.g. for VX25 and TS 8 frames)
- Feed-trough wiring
- LED impact protection cover

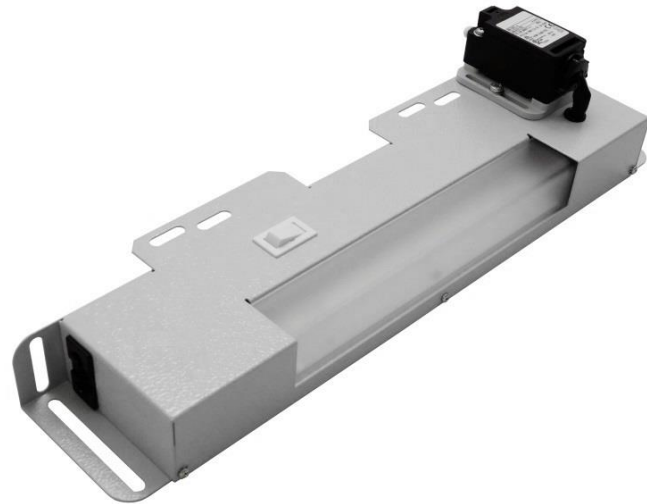


Image similar

Technical Data

Electrical data	Operating voltage	110 - 240 V AC, 50/60 Hz
	Power consumption (LED)	13 W
	Luminous flux	1200 lm
	Colour temperature	5000 k
	Bulbs	20 x LED
	Energy class	A+
	Ambient temperature	-10 to +40 °C
	Dissipation power	1 W (according to IEC/EN 61439-1)
Functional data	Cabinet width	from 600 mm width and higher
	Connection	GST 18/3 (according to VDE 0625 / EN 60320)
	Mounting	Screw fastening for 25 mm frame profiles
	Equipment scope	fixed door contact switch, On-/ Off-Switch, Feed-through wiring, LED impact protection cover
Safety	Colour	RAL 7035
	IP Code	IP 20
Dimensions/Weight	Protection class	I
	Approval	CE, ENEC, EMC
	Dimensions	width/height/depth [mm]: 400/81/80
	Weight	incl. packaging ca. 1,3 kg

Accessories

Mains lead cable	e.g. BS-N-35
3-pole jumper cable	e.g. BS-V-06

Safety notes



- The device must not be used outside the specified field of application.
- Only authorised specialists may carry out installation.
- All applicable legal or institutional installation regulations must be complied during installation.
- During installation the cross section, design and installation location must be taken into account.
- The device contains electrical and electronic components and must not be disposed of as household refuse. All locally valid regulations and requirements must be observed.

Dimensions [mm]

Dimension drawing

