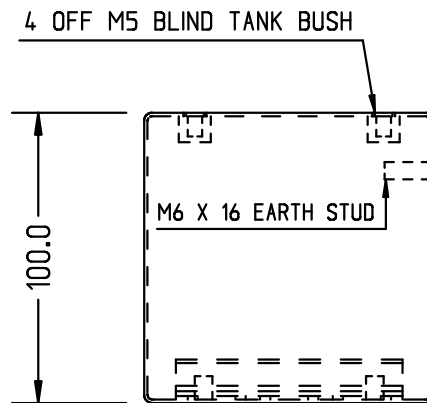
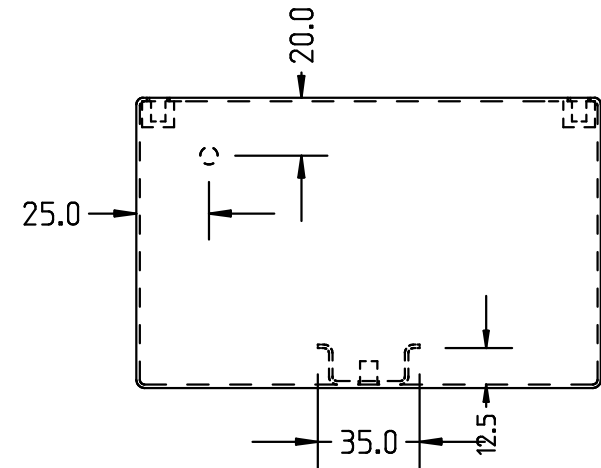


FULL ENCLOSURE ASSEMBLY



BASE & DIN RAIL DETAILS



ELECTRIX INTERNATIONAL LTD

DATE 01.10.04

DRAWN JA

MATERIAL 1.4301 ST/ST

TOLERANCES
+/- 0.5mm
ON HOLE CTRS
+/- 1.5MM
ON FOLDED PARTS

THIS DRAWING IS SUBJECT TO COPYRIGHT
IT MUST NOT BE REPRODUCED OR OTHERWISE
MADE USE OF, WITHOUT THE WRITTEN
PERMISSION OF ELECTRIX INTERNATIONAL LTD

TITLE 160 X 100 X 100 POLISH/SATIN BOX

AUTH

CHECKED MSE

FINISH POLISH/SATIN

THICKNESS 1.2