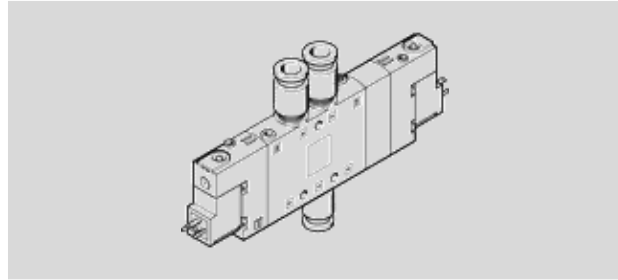
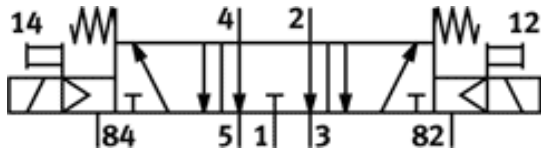


Data sheet: Solenoid valve CPE18-M1H-5/3E-QS-8 – #170255



Function



Feature	values
Valve function	5/3 exhausted
Type of actuation	electrical
Width	18 mm
Standard nominal flow rate	780 l/min
Operating pressure	2.5 ... 10 bar
Design structure	Piston slide
Protection class	IP65 with plug socket to IEC 60529
Authorisation	Germanischer Lloyd c UL us - Recognized (OL)
Nominal size	8 mm
Exhaust-air function	throttleable
Sealing principle	soft
Assembly position	Any
Manual override	with accessories, detenting Pushing
Type of piloting	Piloted
Pilot air supply	Internal
Valve position identification	Inscription label holder
Switching time off	38 ms
Switching time on	20 ms
Duty cycle	100%
Characteristic coil data	24V DC: 1,5W
Permissible voltage fluctuation	-15 % / +10 %
Operating medium	Filtered compressed air, grade of filtration 40 µm, lubricated or unlubricated
Note on operating and pilot medium	Lubricated operation possible (subsequently required for further operation)
Corrosion resistance classification CRC	2
Medium temperature	-5 ... 50 °C
Ambient temperature	-5 ... 50 °C
Electrical connection	Design C
Mounting type	with through hole
Pilot exhaust port 82	M5
Pilot exhaust port 84	M5
Pilot air port 12	M5
Pilot air port 14	M5
Pneumatic connection, port 1	QS-8
Pneumatic connection, port 2	QS-8
Pneumatic connection, port 3	QS-8
Pneumatic connection, port 4	QS-8
Pneumatic connection, port 5	QS-8
Materials note	Conforms to RoHS
Materials information for seals	NBR
Materials information, housing	Aluminium die cast