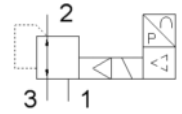
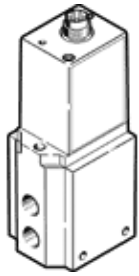


Proportional pressure regulator

MPPE-3-1/2-10-010-B

Part number: 161174

FESTO



Data sheet

Feature	values
Nominal diameter, pressurisation	11 mm
Nominal diameter, exhaust	12 mm
Type of actuation	electrical
Sealing principle	soft
Assembly position	Any
Design structure	Piloted piston regulator
Short circuit strength	for all electrical connections
Safety instructions	MPPE-B safety position: If the power supply cable is interrupted, output pressure is maintained unregulated
Polarity protected	for all electrical connections
Valve function	3-way closed proportional-pressure regulator
Pressure control range	0 ... 10 bar
Inlet pressure 1	11 ... 12 bar
Max. pressure hysteresis	0.05 bar
Switching time off	535 ms
Switching time on	140 ms
Operating voltage range DC	18 ... 30 V
Reference voltage	10 V
Residual ripple	10 %
SETPOINT/ACTUAL values	Voltage type 0 - 10 V
Operating medium	Compressed air in accordance with ISO8573-1:2010 [7:4:4] Inert gases
Note on operating and pilot medium	Lubricated operation possible (subsequently required for further operation)
Fire class in accordance with UL 94	HB
CE mark (see declaration of conformity)	to EU directive for EMC
Corrosion resistance classification CRC	2
Medium temperature	0 ... 60 °C
Protection class	IP65
Ambient temperature	0 ... 50 °C
Authorisation	C-Tick
Product weight	2,400 g
Electrical connection	8-pin M16x0,75 Plug to DIN 45326 Round design
Mounting type	with through hole
Pneumatic connection, port 1	G1/2
Pneumatic connection, port 2	G1/2
Pneumatic connection, port 3	G1/2
Materials information, housing	Wrought Aluminium alloy
Materials information for membrane	NBR