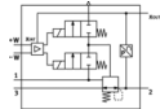


Proportional pressure regulator

VPPE-3-1-1/8-10-010-E1

Part number: 557773
 Delivery usually ex-stock
 Standard product

FESTO



Data sheet

Feature	values
Nominal diameter, pressurisation	5 mm
Nominal diameter, exhaust	2.5 mm
Type of actuation	electrical
Sealing principle	soft
Assembly position	Any Preferably upright
Design structure	Pilot actuated diaphragm regulator
Short circuit strength	for all electrical connections
Safety instructions	VPPE safety position: If the power supply cable is interrupted, output pressure is maintained unregulated.
Polarity protected	for all electrical connections
Type of reset	mechanical spring
Type of piloting	Piloted
Valve function	3-way proportional-pressure regulator
Type of display	LED display 3-digit
Pressure control range	0.1 ... 10 bar
Inlet pressure 1	6 ... 11 bar
Max. pressure hysteresis	0.05 bar
Standard nominal flow rate	1,250 l/min
Operating voltage range DC	21.6 ... 26.4 V
Duty cycle	100%
Max. electrical power consumption	4.2 W
Residual ripple	10 %
Switch output	PNP
Signal range, analogue output	0 - 10 V
Signal range, analogue input	0 - 10 V
Operating medium	Compressed air in accordance with ISO8573-1:2010 [7:4:4] Inert gases
Note on operating and pilot medium	Lubricated operation not possible
CE mark (see declaration of conformity)	to EU directive for EMC
Corrosion resistance classification CRC	2
Medium temperature	10 ... 50 °C
Protection class	IP65
Ambient temperature	0 ... 60 °C
Product weight	390 g
Linearity error in ± %FS	1 %FS
Temperature coefficient	0.04 %/K
Repetition accuracy in ± %FS	0.5 %FS
Electrical connection	Plug M12

Feature	values
	5-pin
Mounting type	with through hole
Pneumatic connection, port 1	G1/8
Pneumatic connection, port 2	G1/8
Pneumatic connection, port 3	G1/8
Materials note	Conforms to RoHS
Materials information, housing	Wrought Aluminium alloy Anodised