

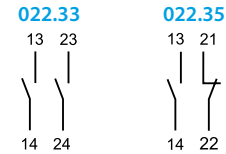
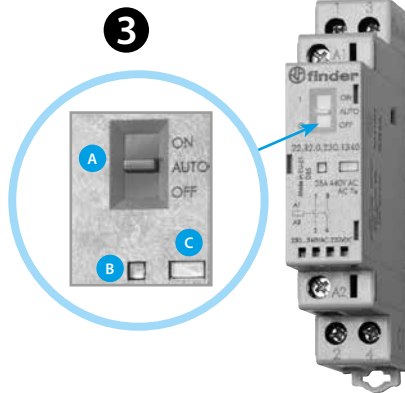
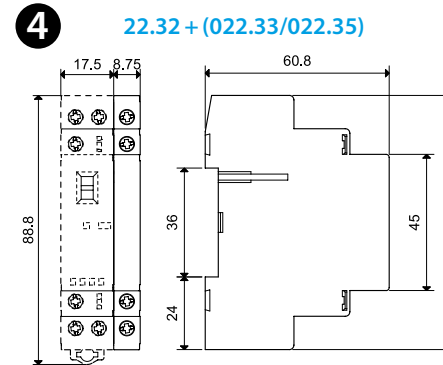
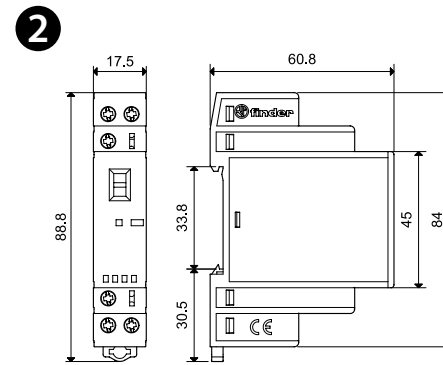
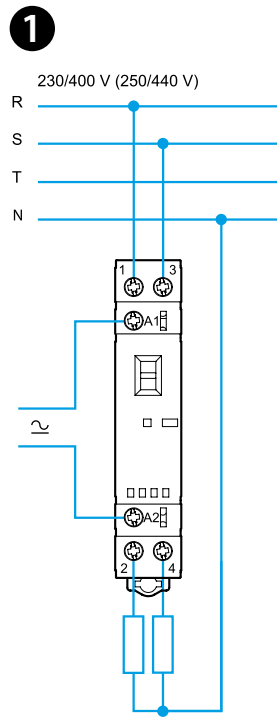


22.32

22.32.0.xxx.xx0	
	$U_N$ (12-24-48-60-120-230)V AC (50/60 Hz) / DC $U_{min}$ - $U_{max}$ (0.8-1.1) $U_N$ P 2 VA / 2.2 W
	22.32...x3x0    22.32...x5x0    22.32...x4x0
	25 A 440 V AC (EN 61095) AC1/AC-7a (250 V)    6250 VA AC3/AC-7b    10 A AC5a (250 V)    15 A AC15 (230 V AC)    1800 VA (M) (230 V AC)    1 kW DC1 (30/110/220)V    (25/5/1)A AC-7c    - (10 A - 22.32...4xx0) 800 W (2000 W - 22.32...4xx0) 300 W (800 W - 22.32...4xx0) CFL-LED    100 W (200 W - 22.32...4xx0)
	(-20...+50)°C
IP20	



- Open Type Device - Pollution degree 2 Installation Environment
- Maximum Surrounding Air Temperature 50°C
- Minimum distance among modular contactors 9 mm
- Field Wiring Terminals:  
 Use 60/75°C copper conductor only and wire ranges  
 No. 10-12-18-24 AWG, Solid only  
 Terminal tightening torque 7.0 lb.in. (0.8 Nm)
- Suitable for use on a circuit capable of delivering not more than 5000 ARMS Symmetrical, 240 V ac, when protected by Listed Cartridge Fuses, rated K5 Class (No Current Limiting, Non-Time Delay, max 600 Vac, 30 A, 50 kA A.I.C.) or RK5 Class (Current Limiting, Time Delay, max 600 Vac, 15 A, 50 kA A.I.C.) or equivalent
- For use in a circuit protected by Type1 or Type2 Surge Protective Devices with "Max Voltage Protection" rating of 3.7 kVpk and "Minimum Nominal Discharge Current" of 5 kA (at 6 kV)



022.33	2 NO (DPST- NO)
022.35	1 NO (SPST- NO) + 1 NC (SPST- NC)
	$I_{th}$ 6 A AC15 700 VA (230 V AC)

# ENGLISH

## 22.32 MODULAR CONTACTORS 25 A

Contact gap  $\geq$  3 mm for NO contacts only; NC contacts  $\geq$  1.5 mm.  
 Compliant with EN 61095: 2009.  
 AC/DC silent coil (with varistor protection).

### 1 CONNECTION DIAGRAM

### 2 OUTLINE DRAWINGS

### 3 FRONT VIEW

A = Selector (22.32.0.xxx.xx40)

The three-position manual selector has the following functions:

#### ON position

The contacts are latched in the operated state (NO contacts - closed and NC contacts - open), the mechanical indicator is visible in its window, the LED is not illuminated.

#### AUTO position

The state of contacts, mechanical indicator and LED follow the coil supply voltage.

#### OFF position

Even if terminals A1 - A2 are supplied with rated voltage, the coil is not energized, and so the contacts remain in the non-operated state, the mechanical indicator is not visible and the LED is not illuminated.

B = LED

C = Mechanical indicator

### 4 ACCESSORIES

- Auxiliary contact module available, "Quick assembly" with the main contactor 022.33/022.35
- It is not possible to assemble the auxiliary module on 22.32.0.xxx.x4x0 (2 NC versions)

#### OTHER DATA

It is suggested an air gap of 9 mm between adjacent relays for installations and working conditions close to the limit (that is, ambient temperature  $>$  40°C, coil operated for a prolonged period of time, all contacts loaded with current  $>$  20 A).

