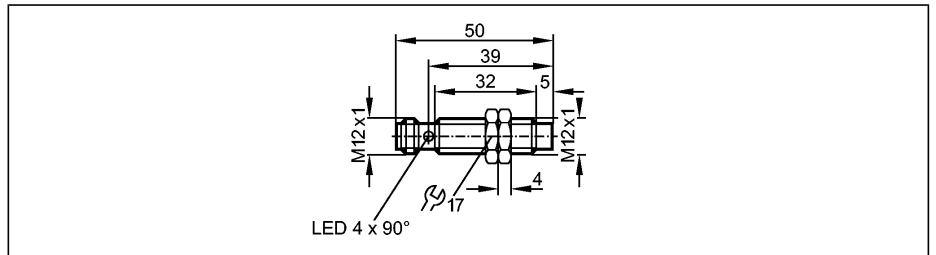


Inductive sensors

IFS215

IFB3004-BPKG/M/US
Inductive sensor
Metal thread M12 x 1
Connector
gold-plated contacts

Sensing range 4 mm [nf]
non-flush mountable



Made in Germany



Electrical design	DC PNP
Output	normally open
Operating voltage [V]	10...36 DC
Current rating [mA]	100
Short-circuit protection	pulsed
Reverse polarity protection	yes
Overload protection	yes
Voltage drop [V]	< 2.5
Leakage current [mA]	< 0.5
Current consumption [mA]	< 10
Real sensing range (Sr) [mm]	4 ± 10 %
Operating distance [mm]	0...3.25
Switch-point drift [% of Sr]	-10...10
Hysteresis [% of Sr]	1...20
Switching frequency [Hz]	700
Correction factors	mild steel = 1 / stainless steel approx. 0.7 / brass approx. 0.5 / Al approx. 0.5 / Cu approx. 0.4
Ambient temperature [°C]	-25...70
Protection	IP 67, II
EMC	EN 61000-4-2 ESD: 4 kV CD / 8 kV AD EN 61000-4-3 HF radiated: 10 V/m (80...1000 MHz) EN 61000-4-4 Burst: 2 kV EN 61000-4-5 Surge: 0.5 kV EN 61000-4-6 HF conducted: 10 V (0.15...80 MHz) EN 55011: class B
MTTF [Years]	1896
Housing materials	brass white bronze coated; active face: PBT orange
Function display	
Switching status LED	yellow (4 x 90°)
Connection	M12 connector; gold-plated contacts
Weight [kg]	0.032
Accessories (included)	2 lock nuts

Wiring

