


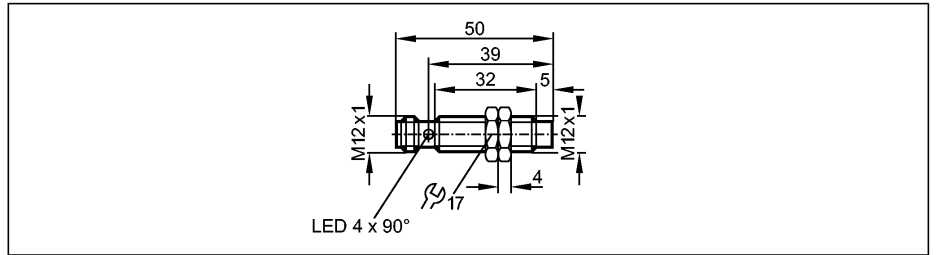
Inductive sensors
NAMUR EN 60947-5-6 

NF500A

IFB2007-N/US/1G/1D
Inductive sensor
Metal thread M12 x 1
Connector

ATEX approval
Group II, category 1D
Group II, category 1G/2G

Sensing range 7mm [nf]
non-flush mountable



Made in Germany

Electrical design

Output





Nominal voltage	[V]
Supply voltage	[V]
Current rating	[mA]
Current consumption	[mA]
Internal capacitance	[nF]
Internal inductance	[μH]
Real sensing range (Sr)	[mm]
Switch-point drift	[% of Sr]
Hysteresis	[% of Sr]
Switching frequency	[Hz]
Correction factors	

Ambient temperature	[°C]
Protection	
Shock / vibration resistance	
EMC	
MTTF	[Years]
Approval	

Marking of the unit

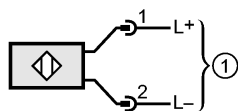
Housing materials	
Function display	
Switching status	LED
Connection	
Weight	[kg]
Remarks	
Accessories (included)	

Connection to certified intrinsically safe circuits with the max. values U = 15 V / I = 50 mA / P = 120 mW normally closed

	8.2 DC (1kΩ)
	7.5...30 DC when used outside the hazardous area
	< 30 when used outside the hazardous area
	< 1 *)
	< 210
	< 145
	7 ± 10 %
	-10...10
	1...15
	700
	mild steel = 1 / stainless steel approx. 0.7 / brass approx. 0.5 / Al approx. 0.4 / Cu approx. 0.3
	-20...70
	IP 67, III
	30g (11 ms) / 10-55 Hz (1 mm)
	EN 60947-5-6
	3119
	BVS 04 ATEX E 091 X IECEX BVS 06.0003
	 II 1D Ex iaD 20 T 90°C Ta: -20...70°C
	 II 1G Ex ia IIC T6 Ta: -20...55°C
	 II 2G Ex ia IIC T6 Ta: -20...70°C
	 Ex ia IIC T6 zone 0 Ta: -20...70°C
	brass special coating; active face: PBT; connector: PA
	yellow (4 x 90°)
	M12 connector
	0.061
	*) damped; (> 2.1 mA undamped)
	2 lock nuts

NF500A

Wiring



1 = connection to NAMUR-amplifier