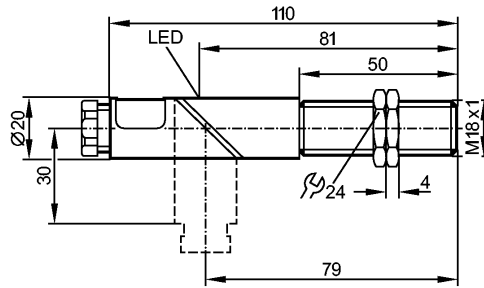


IG5718

IGE2005-FRKG

Inductive sensors



Made in Germany



Product characteristics	
Inductive sensor	
Plastic thread M18 x 1	
Terminals	
Sensing range 5 mm; [f] flush mountable	
Electrical data	
Electrical design	DC PNP/NPN
Operating voltage [V]	10...55 DC
Protection class	II
Reverse polarity protection	yes
Outputs	
Output function	normally open / closed programmable
Voltage drop [V]	< 4.6
Minimum load current [mA]	4
Leakage current [mA]	< 1
Current rating [mA]	400
Short-circuit protection	pulsed
Overload protection	yes
Switching frequency [Hz]	800
Range	
Sensing range [mm]	5
Real sensing range (Sr) [mm]	5 ± 10 %
Operating distance [mm]	0...4.05
Accuracy / deviations	
Hysteresis [% of Sr]	1...15
Switch-point drift [% of Sr]	-10...10
Environment	
Ambient temperature [°C]	-25...80
Protection	IP 65
Tests / approvals	
EMC	EN 60947-5-2 EN 55011: class B
MTTF [Years]	1699
Mechanical data	
Mounting	flush mountable

IG5718

IGE2005-FRKG

Inductive sensors

Housing materials	PBT; end cap: polycarbonate
-------------------	-----------------------------

Weight [kg]	0.046
-------------	-------

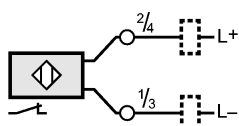
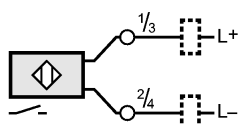
Displays / operating elements

Output status indication	LED	yellow
--------------------------	-----	--------

Electrical connection

Connection	terminals up to 2.5 mm ² ; cable diameter 4.5...10 mm, cable gland M16 x 1.5
------------	---

Wiring



Accessories

Accessories (included)	2 lock nuts
------------------------	-------------

Remarks

Pack quantity [piece]	1
-----------------------	---