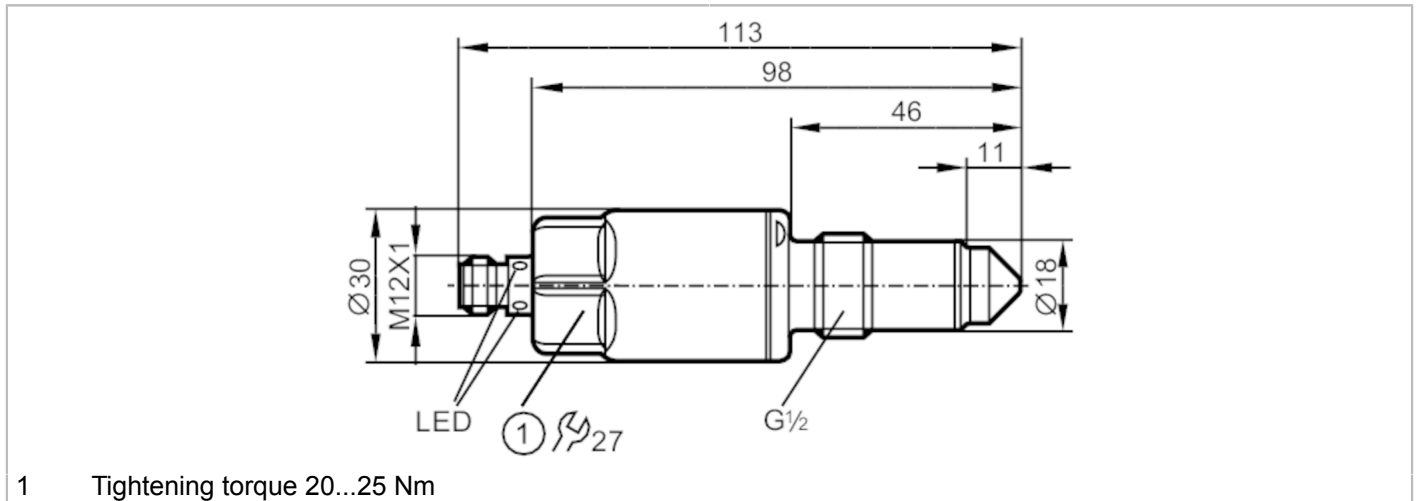


# LMT100



## Sensor for point level detection

LMACE-A12E/QSKG/0/US



ACS



CRN



ERAC

EC 1935/2004 EHEDG Certified



Reg31

Made in Germany

Application	
Media	Liquids; viscous media; powder
Cannot be used for	See the operating instructions, chapter "Function and features".
Probe length [mm]	11
Tank pressure [bar]	-1...40
MAWP (for applications according to CRN) [bar]	40
oil	
Medium temperature [°C]	-40...100
Medium temperature short time [°C]	-40...150; (1 h)
water	
Medium temperature [°C]	-40...85
Medium temperature short time [°C]	-40...150; (1 h)
Electrical data	
Operating voltage [V]	18...30 DC
Current consumption [mA]	< 50
Protection class	III
Reverse polarity protection	yes

# LMT100



## Sensor for point level detection

LMACE-A12E/QSKG/0/US

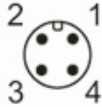
Outputs		
Total number of outputs	2	
Number of digital outputs	2	
Output function	normally open / normally closed; (programmable)	
Max. voltage drop switching output DC [V]	2.5	
Permanent current rating of switching output DC [mA]	100	
Electrical design	PNP/NPN	
Short-circuit protection	yes	
Type of short-circuit protection	pulsed	
Overload protection	yes	
Measuring/setting range		
Factory setting	hydrous media	
Interfaces		
Communication interface	IO-Link	
Communication interface	IO-Link	
Transmission type	COM2 (38,4 kBaud)	
IO-Link revision	1.1	
SDCI standard	IEC 61131-9	
IO-Link device ID	0x00130	
Profiles	Smart Sensor: Process Data Variable; Device Identification	
SIO mode	yes	
Required master port type	A	
Process data analogue	1	
Process data binary	2	
Min. process cycle time [ms]	2.3	
Operating conditions		
Ambient temperature [°C]	-40...85	
Note on ambient temperature	Medium temperature: < 100 °C -40...60 °C Medium temperature: < 150 °C	
Storage temperature [°C]	-40...85	
Protection	IP 68; IP 69K	
Tests / approvals		
EMC	DIN EN 61000-6-2	
	DIN EN 61000-6-4	: open tanks
	DIN EN 61000-6-3	: closed tanks
Shock resistance	DIN EN 60068-2-27	50 g (11 ms)
Vibration resistance	DIN EN 60068-2-6	20 g (10...2000 Hz)
MTTF [years]	223	
UL Approval no.	H001	

# LMT100



## Sensor for point level detection

LMACE-A12E/QSKG/0/US

Mechanical data		
Weight	[g]	209.2
Materials	stainless steel (1.4404 / 316L); PEEK; PEI; FKM	
Materials (wetted parts)	PEEK	
Process connection	G 1/2 external thread	
Surface characteristics Ra/Rz of the wetted parts	< 0.8	
Displays / operating elements		
Display	switching status	LEDs, yellow
	operating status	LEDs, green
Remarks		
Notes	Please see the technical note under "Documents & Downloads"	
Pack quantity	1 pcs.	
Electrical connection		
Connector: 1 x M12; Kontakte: gold-plated		
		

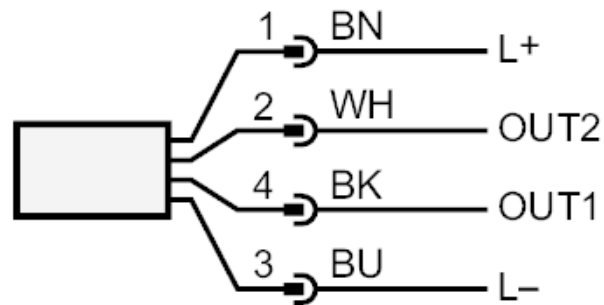
# LMT100



## Sensor for point level detection

LMACE-A12E/QSKG/0/US

### Connection



OUT1: switching output IO-Link Teach

OUT2: switching output

colours to DIN EN 60947-5-2

Core colours :

BK = black

BN = brown

BU = blue

WH = white