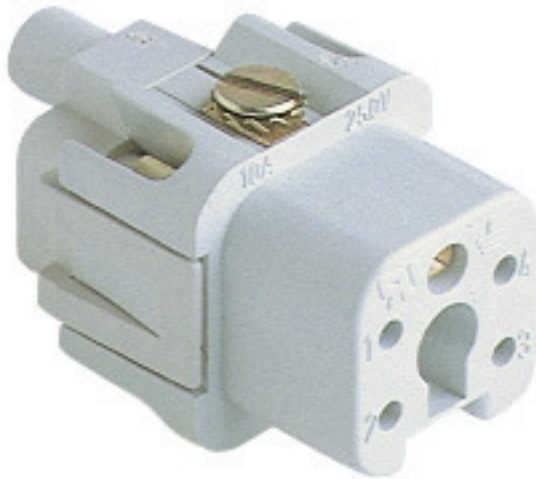







## Product Sheet

**Part Number:** CKF 04



<b>Family</b>	inserts
<b>Version</b>	screw terminal connections
<b>Series</b>	CK
<b>Product type</b>	with female contacts
<b>Execution</b>	white colour coded
<b>Model</b>	female insert
<b>Reference standard</b>	EN 61984 (2001-11)
<b>Contact type</b>	silver plated
<b>No. of poles</b>	4 poles + 
<b>Voltage (V)</b>	250V
<b>Current (A)</b>	10A (A.C. and D.C.)
<b>Wire section</b>	0,75mm <sup>2</sup> - 2,5mm <sup>2</sup>
<b>Awg size</b>	18 - 14
<b>Quality mark</b>	   

The information and the dimensions contained are not binding and may be changed without prior notice.  
 The drawing's dimensions are in mm.

<b>IP degree of protection</b>	IP20 degree of protection without enclosure, IP44 and IP66/67 with enclosure (EN 60529)
<b>Fixing centre distance</b>	size "21.21"
<b>Impulse withstand voltage</b>	4kV
<b>Pollution degree</b>	3
<b>Notes</b>	<p>CKF inserts:</p> <ul style="list-style-type: none"><li>- characteristics according to EN 61984: (10A 250V 4kV 3) (10A 230/400V 4kV 2)</li><li>- the female inserts can be mounted into the straight bulkhead housings CK I from the rear</li><li>- inserts for connectors with the following sections: 0.75 - 2.5 mm<sup>2</sup> - AWG 18 - 14</li><li>- can be mated with CKS inserts</li><li>- torsion couple recommended for conductor fastening screws and stripping length see section feature of inserts</li><li>- for maximum current load, see the insert load curve section</li><li>- inserts and enclosures for application with temperatures up to 180°C, available on request.</li></ul>

The information and the dimensions contained are not binding and may be changed without prior notice.  
The drawing's dimensions are in mm.