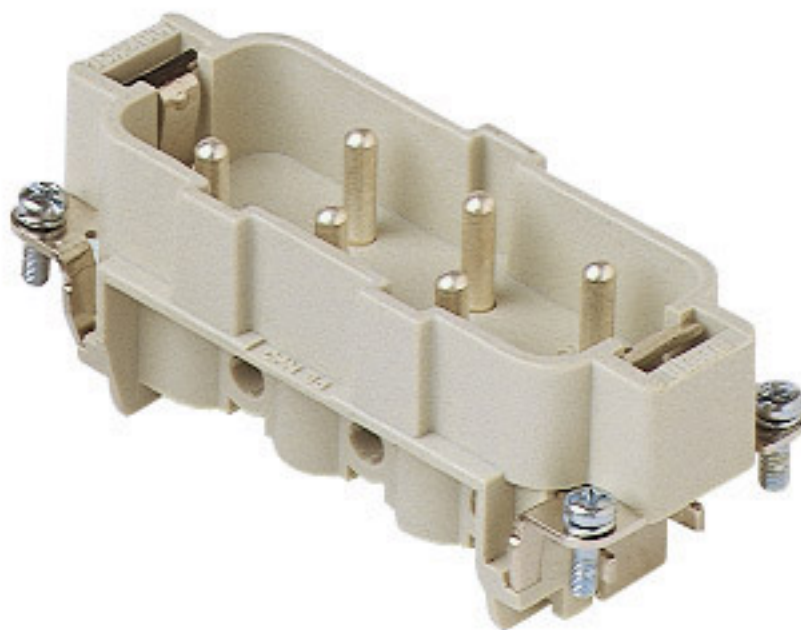



Product Sheet

Part Number: CPM 06



Family	inserts
Version	screw terminal connections
Series	CP
Product type	with male contacts
Model	male insert
Reference standard	EN 61984 (2001-11)
Contact type	silver plated
No. of poles	6 poles + ⊕
Voltage (V)	400V/690V
Current (A)	35A (A.C. and D.C.)
Wire section	1,5mm ² - 6mm ²
Awg size	16 - 10

The information and the dimensions contained are not binding and may be changed without prior notice.
The drawing's dimensions are in mm.

Quality mark	
IP degree of protection	IP20 degree of protection without enclosure; IP65, IP66, IP68 (EN 60529) and IP69K (DIN 40050 - 9) with enclosure
Fixing centre distance	size "77.27"
Impulse withstand voltage	6kV
Pollution degree	3
Notes	CP inserts: - characteristics according to EN 61984: (35A 400/690V 6kV 3)

The information and the dimensions contained are not binding and may be changed without prior notice.
The drawing's dimensions are in mm.