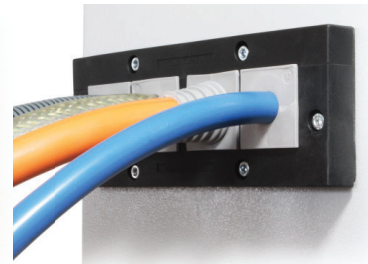


KEL 183 | KEL 183-E

Cable entry frames for supply cables



Configure online now



IP54

Product description

The split cable entry frame KEL 183 enables the user to route cables and tubes with a diameter of up to 75 mm (depending on the frame type) and to seal them in accordance with IP54 / up to UL type 12.

For cables up to 35 mm the cable grommets KT can be used. With these split cable grommets, pre-terminated cables can be routed.

For cables up to 75 mm we have created the grommets KTMB for KEL 183. Those are not split and have a defined area for pushing the cable through.

All frame systems come with a rubber gasket.

Advantages & benefits

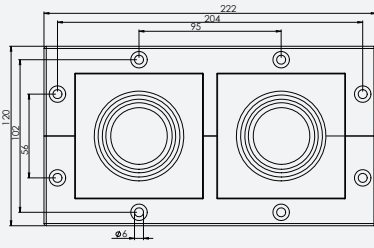
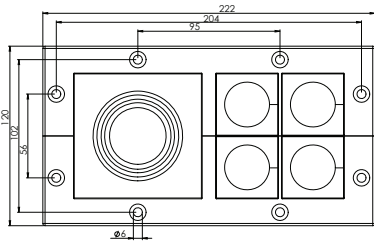
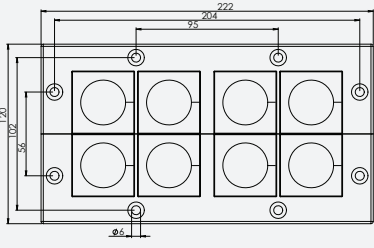
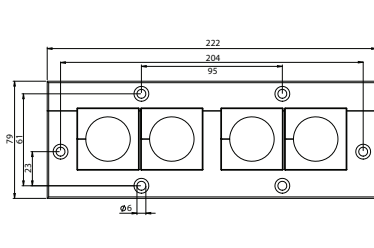
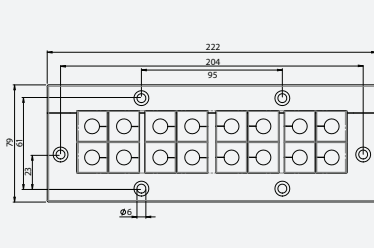

- Installation of cables up to 75 mm
- Grommets allow rigid cables to be properly positioned and oriented during the installation process
- Retrofits, repairs and maintenance can be done much more easily and quickly

Specifications

Material	Polyamide (PA)
Flame class	UL94-Vo, self-extinguishing
IP rating	IP54 with gasket and correct selection of the cables (certified acc. to EN 60529)
UL type rating	UL type 12 (acc. to UL 50E)
Temperature	- 40°C to + 140°C (static)
Properties	Halogen-free, silicone-free
Cut-out dimensions	See page 220-221
Frame depth	17 mm

Accessories

KTMB 183 Cable grommets	35
KT Cable grommets	48 - 52
AT Adapter grommets	54 - 57
KEL-EMC Cable collectors	148 - 150
ST Plugs	53

Description	Type	Order No.	Grommets KT KT 183 KT large	PU
	KEL 183 2	47200	2 -	1
	KEL 183 2 with V2A screws	47200.200	2 -	1
	KEL 183 5	47220	1 4	1
	KEL 183 5 with V2A screws	47220.200	1 4	1
	KEL 183 8	47240	- 8	1
	KEL 183 8 with V2A screws	47240.200	- 8	1
	KEL 183-E4	47250	- 4	1
	KEL 183-E4 with V2A screws	47250.200	- 4	1
	KEL 183-E16	47255	16 KT small	1
	KEL 183-E16 with V2A screws	47255.200	16 KT small	1