



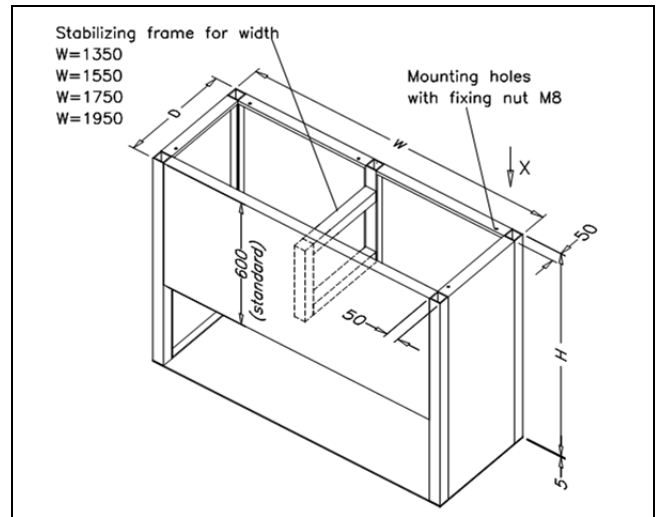
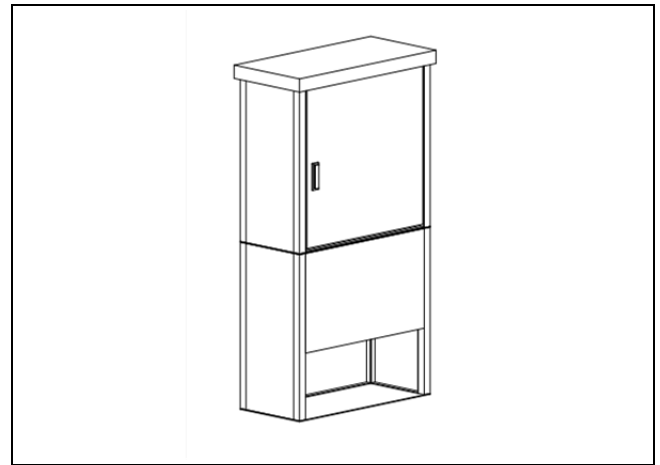
# GRP ground vault for CLASSIC protective cabinets

## 1 Application

Cables for cabinets with ground vaults usually enter the above ground part through a floor plate. The cables are sealed by cable bulkhead-fittings. Special INTERTEC WDD grommets are used for tube/pipe sealing (see data sheet wall bushing Kd162-xe). The interior of the vault is easily accessible through a flange plate. Cables can be pulled and bulkhead-fitting nuts can be easily reached.

## 2 Advantages

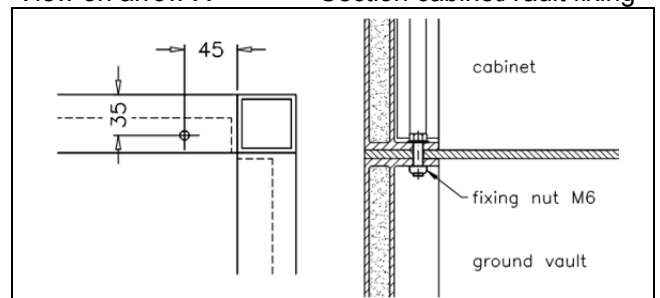
- Moisture-proof separation of the cabinet from the soil
- The light weight GRP material used for vault and cabinet make handling easy
- Assembly is independent from the concrete pad or the consistency of the ground
- Variable assembly because the vault and cabinet can be shipped separately. Vault assembled or in individual parts for field assembly
- Low-cost cabinet floor design



Protective cabinet Type CLASSIC	GRP Ground Vault H x W x D (mm)
....070.050	1000 x 700 x 500
....070.070	1000 x 700 x 700
....070.090	1000 x 700 x 900
....090.050	1000 x 900 x 500
....090.070	1000 x 900 x 700
....090.090	1000 x 900 x 900
....110.050	1000 x 1100 x 500
....110.070	1000 x 1100 x 700
....110.090	1000 x 1100 x 900
....135.050	1000 x 1350 x 500
....135.070	1000 x 1350 x 700
....135.090	1000 x 1350 x 900
....155.050	1000 x 1550 x 500
....155.070	1000 x 1550 x 700
....155.090	1000 x 1550 x 900
....175.050	1000 x 1750 x 500
....175.070	1000 x 1750 x 700
....175.090	1000 x 1750 x 900
....195.050	1000 x 1950 x 500
....195.070	1000 x 1950 x 700
....195.090	1000 x 1950 x 900

View on arrow X

Section cabinet/vault fixing





# Access opening for CLASSIC protective cabinet with ground vault

## 1 Application

Opening in the floor of cabinets can be provided to ease bulkhead/ grommet installation and assembly.

## 2 Description

### Cut out in floor with flange plate.

To seal the vault cavity from the interior of the cabinet the floor flange (glass fiber reinforced polyester) is fitted with a bonded rubber gasket. The bolted flange plate is removable.

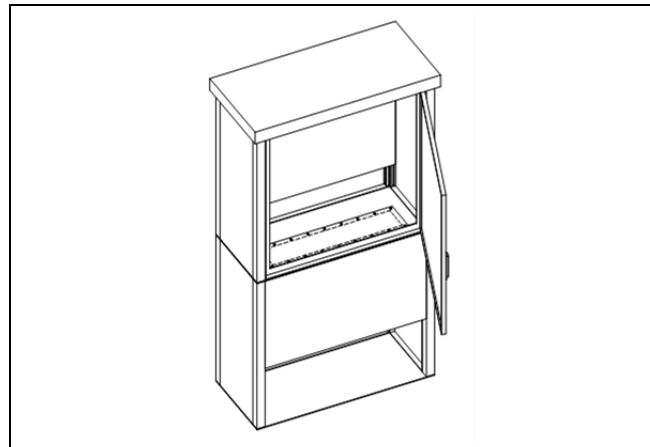
This ground support can be combined with a stainless steel floor frame (floor version design "DH"). This could be helpful if a larger cabinet is delivered and the equipment section is separated from the vault, or if a cabinet is assembled on a vault or frame that is already built on the site.

## 3 Advantages

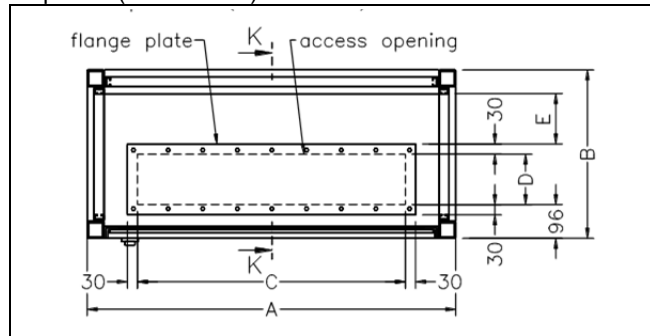
- The floor plate of the protection cabinet is accessible from above and below
- Installation cable and pipe bulkhead-fittings to the fixed portion of the floor plate is possible

## 4 Dimensions

Type of cabinet	Cabinet/ Vault		Access opening		Flange depth
	A	B	C	D	E
....070.050	700	500	400	150	154
....070.070		700		200	304
....070.090		900		250	454
....090.050	900	500	600	150	154
....090.070		700		200	304
....090.090		900		250	454
....110.050	1100	500	800	150	154
....110.070		700		200	304
....110.090		900		250	454
....135.050	1350	500	1050	150	154
....135.070		700		200	304
....135.090		900		250	454
....155.050	1550	500	1x 400 1x 600	150	154
....155.070		700		200	304
....155.090		900		250	454
....175.050	1750	500	2x 600	150	154
....175.070		700		200	304
....175.090		900		250	454
....195.050	1950	500	1x 600 1x 800	150	154
....195.070		700		200	304
....195.090		900		250	454



Top view (without roof)



## 5 Ordering Designation

Floor version design „H“ or floor version „DH“ (with stainless steel floor frame )

## 6 Option: Removable Sub Plate

On request, a sub plate below the door can be made removable to enable even better access for customer installation. The width of this removable sub plate is the same as the door. From a width of 1550 mm this plinth panel is composed of two parts. The standard height is 200 mm.



To prevent unauthorized removal, the sub plate can only be accessed when the cabinet door is open.

Order Designator SZ008

### Section K-K

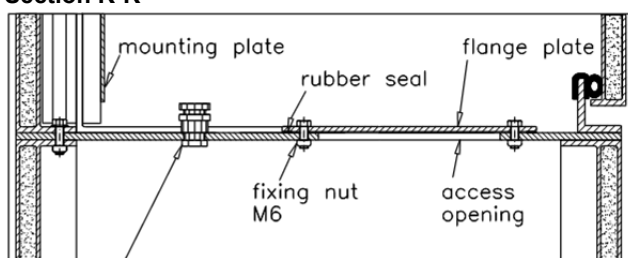


Illustration of arrangement: bulkhead-fitting (supplied by others)