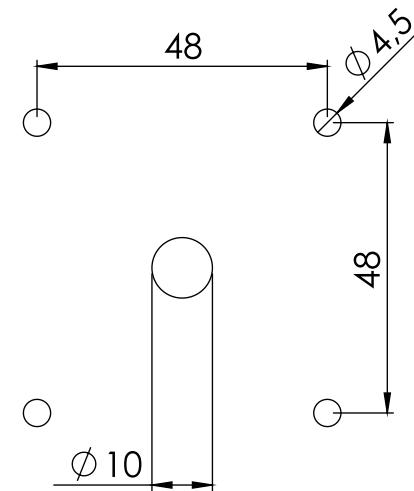


Bohrbild / Hole Pattern



Schaltertype / Switch type:
Schutzart / protection class:
IP40



IEC 60947		LX80	LX125	LX160	LX180	LX250
Isolationsspannung / Insulation voltage	V	690	690	690	690	690
Betriebsstrom / Operating current						
AC-23 A (400V) / AC-21 A (440V)	A	32	63	100	125	160
Betriebsleistung / Operating performance						
AC-23 A (440V)	kW	15	30	45	55	75
AC-23 A (690V)	kW	18,5	37	37	45	55
AC-3 (440V)	kW	15	30	45	55	75
AC-3 (690V)	kW	15	30	30	37	45
UL		LX80	LX125	LX160	LX180	LX250
Betriebsstrom / Operating current	A	30	60	100	125	160
Betriebsspannung / Operating voltage	V	480	480	480	480	480
Wirkleistung / Permanent current (at AC)	hp	20	30	60	75	100
Kurzzeitstromfestigkeit / Short-circuit current rating (SCCR, 480V)	kA	50	50	65	65	50
Dauerstrom d. vorgesch. Sicherung / Perm. current of the upstr. fuse	A	30	60	100	125	160
Anschlüsse (nur Cu-Leiter) / Connections (Cu conductors only)		LX80	LX125	LX160	LX180	LX250
IEC						
eindrätig / Solid-core	mm ²	2,5-35	4-50	16-185	16-185	16-185
feindrätig m. Endenbearb. / Fine stranded with wire end treatment	mm ²	2,5-16	4-35	16-150	16-150	16-150
mehrdrätig / Stranded	mm ²	2,5-35	4-50	16-185	16-185	16-185
UL	AWG	14-6	12-1	3-400 kcmil	1-400 kcmil	1-400 kcmil
CSA	AWG	12-8	10-4	3-2/0	3-2/0	3-2/0
Sonstiges / Other		LX80	LX125	LX160	LX180	LX250
Umgebungstemp. / Ambient temp. elektr. Lebensdauer / Electrical life	°C	-25 ... +55 6000	-25 ... +55 6000	-25 ... +55 6000	-25 ... +55 6000	-25 ... +55 6000
Anzugsmoment Klemme / Terminal tightening torque	Nm	3	3	11	11	11
Verlustleistung je Kontakt / Current heat loss per contact	W	4,5	7,5	36	36	36