

IRC series

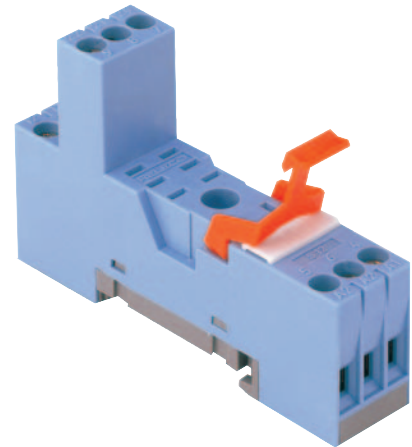
S12

Socket for Interface relay

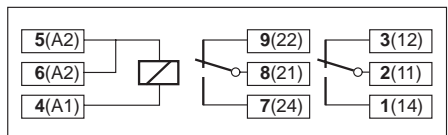
Type	S12 I/O socket for IRC relays with 2 x CO Logic connection , 5 A
Rated current	5 A
Specifications	
Rated load	5 A/250 V
Insulation	Test voltage V rms 1 min
- All terminals/DIN rail	5 kV
- Terminal/terminal	5 kV
Cross-section of connecting wire	
- Single-wire	4 mm ² or 2 x 2,5 mm ²
- Multi-wire	22 - 14 AWG
Max. screw torque	1,2 Nm
Screw dimensions	M3, Pozi, slot
Integrated retaining clip/plastic	for relay series C12
Labelling space	detachable
Connection label	1...6; DIN/EN
Mounting	DIN rail TS35 or mounting plate
Ambient temperature operation/storage	-40 (no ice)...60 °C /-40 ... 80 °C

Socket for IRC relays	C12, C12G
------------------------------	------------------

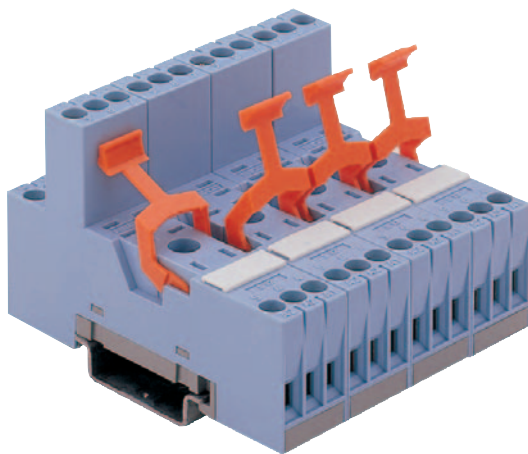
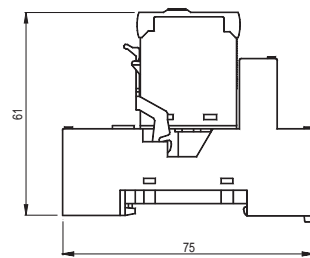
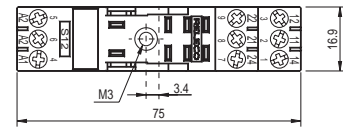
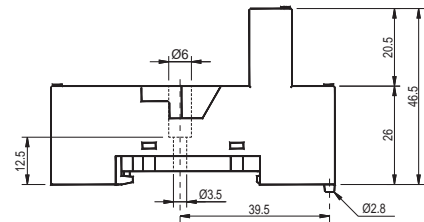
Accessories	
Coil bridge bars	V10-G, V10-E V10-R V10-A B20-G, B20-R B20-A



Connection diagram



Dimensions [mm]



Technical approvals, conformities

