


10431000	DATA SHEET	
Valid from: 18.09.2020	EPIC® H-A 4 SS / H-A 4 BS	

Description

- H-A inserts with screw termination up to 2.5 mm² wire cross section.
- The small H-A 3 / H-A 4 is used whenever there is minimal space.
- Easy to service screw connection.
- Easy cable connection with straight cable entry in the contacts.



General Characteristics

Series	H-A 4
Version	Male/Female (Article 10432000)
Number of Contacts	4+PE
Termination Methods	Screw termination: 0.5 - 2.5 mm ² (2.5 mm ² with conductor end sleeves depending on the crimping profile)
Protection (DIN EN 60529)	IP65, latched to the housing
Protection (NEMA 250, UL50E)	4, 12, latched to the housing
Temperature Range	-40°C to +100°C, short-term up to +125°C

Mechanical Characteristics

Cycle of mechanical operation	100
-------------------------------	-----

Electrical Characteristics

Rated Voltage, IEC	400 V
Rated Voltage, UL	600 V
Rated Voltage, CSA	600 V
Rated Impulse Voltage	4 kV
Rated Current, IEC	23 A
Rated Current, UL	10 A
Rated Current, CSA	10 A
Contact Resistance	1,5 - 4 mOhm
Degree of Soiling	3

Materials and Surfaces

Contacts	Copper alloy, hard silver-plated
Insulating Body	PA
Flammability Class according to UL 94	V0


Approvals

UL-Approval, E-File-Number	E75770
VDE-Approval, VDE-REG.-Nr.	B437
CSA-Approval, File Number	053004

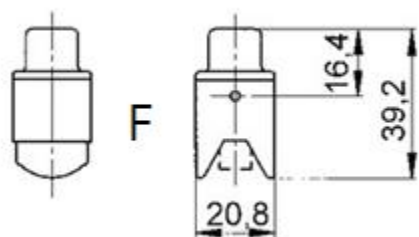
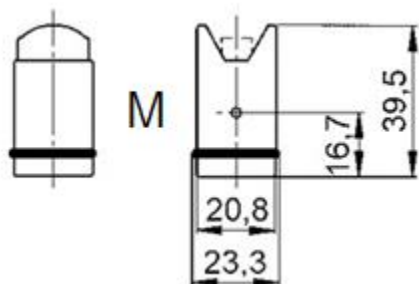
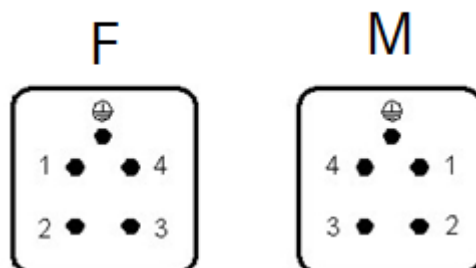
Standard


Safety Standard	IEC 61984, UL 1977, CSA-C22.2
-----------------	-------------------------------

Creator: MANA2/PDP	Document: DB1043100EN	Page 1 of 3
Released: IVSE1/PDP	Version: 02	

10431000	DATA SHEET	
Valid from: 18.09.2020	EPIC® H-A 4 SS / H-A 4 BS	

Technical Drawings



10431000	DATA SHEET	
Valid from: 18.09.2020	EPIC[®] H-A 4 SS / H-A 4 BS	



Industrial machinery and plant engineering



Assembly time



Space requirement

Info

Robust power supply connector
Straight cable entry into the contacts

Application range

Machine and equipment manufacturings
Control engineering

Remark

Photographs are not to scale and do not represent detailed images of the respective products.

Creator: MANA2/PDP Released: IVSE1/PDP	Document: DB1043100EN Version: 02	Page 3 of 3
---	--------------------------------------	-------------