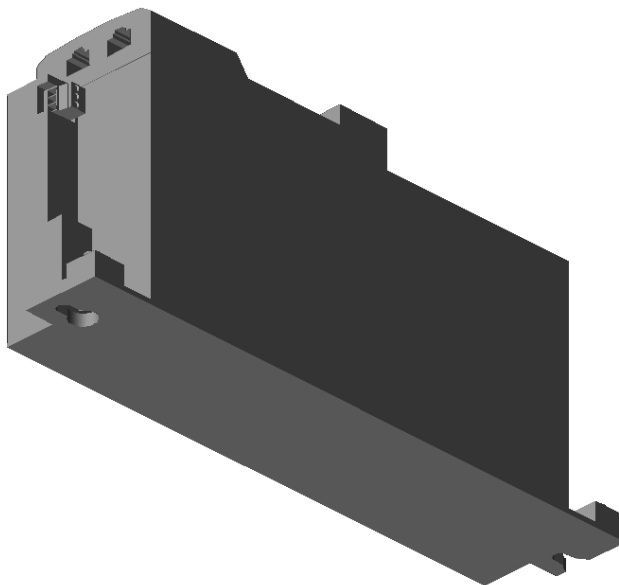





Inverter product series**I55BE240F10V1000LS**

Note: The model shown is a simplified representation. Minor deviations may occur.

-  [16270842_3D.stp](#)
-  [16270842_datatable.csv](#)
-  [16270842_datatable.xls](#)

3D Handling Commands

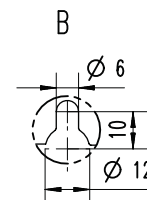
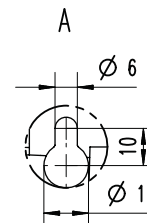
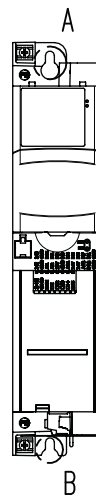
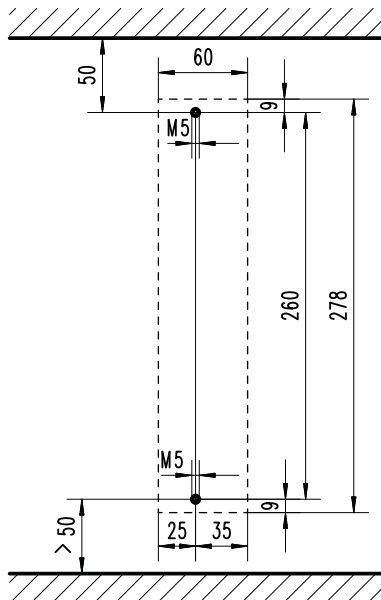
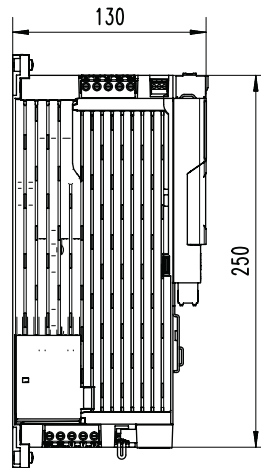
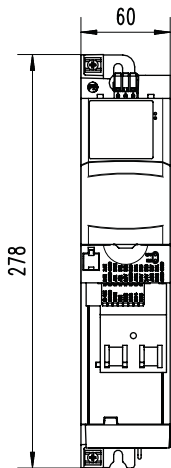
Rotate Zoom Pan

**Technical product information**

Inverter product series	i550 Frequency inverter
Inverter	i550-C4/400-3
Type	I55BE240F10V1000LS
Rated power	4 kW/5 HP
Rated power LD	5.5 kW/7.5 HP
Rated mains voltage	3/PE 400/480 V AC
Output current	9.5/8.2 A
Output current LD	11.9/9.8 A
RFI filter	Integrated
Output frequency	0-599 Hz
I/O extension	Standard I/O
Fieldbus network	PROFINET
Enclosure	IP20
Mounting location	Control cabinet
Weight / unit	1.650 KG

1.1 kW ... 4 kW

1.1 kW	i550-C1.1/230-1	i550-C1.1/230-2	i550-C1.1/400-3
1.5 kW	i550-C1.5/230-1	i550-C1.5/230-2	i550-C1.5/400-3
2.2 kW	i550-C2.2/230-1	i550-C2.2/230-2	i550-C2.2/400-3
3 kW			i550-C3.0/400-3
4 kW			i550-C4.0/400-3



8800265