

**Cover,3 poles, for screw terminal**

**Part no.**  
**Article no.**

**NZM1-XKSA**  
**260021**

**Program**

|              |  |  |                              |
|--------------|--|--|------------------------------|
| For use with |  |  |                              |
| For use with |  |  | NZM1(-4), PN1(-4), N(S)1(-4) |
| For use with |  |  | 3 pole                       |

**Notes**

Type contains parts for a terminal located at top or bottom for 3 or 4 pole switches.  
 Busbar tag shroud where cable lugs, busbars or tunnel terminals are used.  
 Contained in the set with tunnel terminals and screw terminals.  
 When using insulated conductor material to IP1X.

**Notes**

Type contains parts for a terminal located at top or bottom for 3 or 4 pole switches.  
 Busbar tag shroud where cable lugs, busbars or tunnel terminals are used.  
 Contained in the set with tunnel terminals and screw terminals.  
 When using insulated conductor material to IP1X.

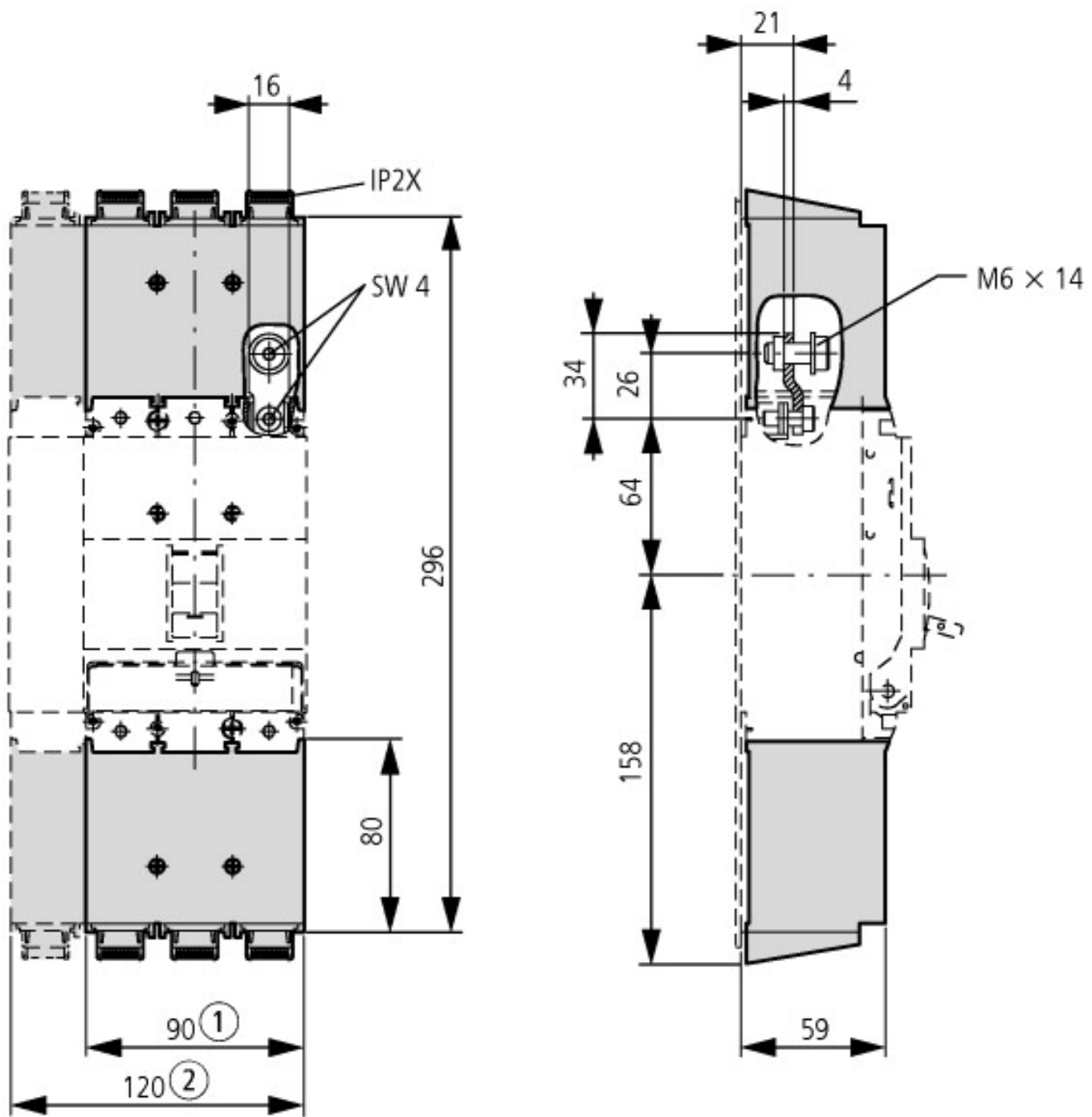
**Approbativen**

|                   |   |
|-------------------|---|
| Product Standards | UL489; CSA-C22.2 No. 5-09; IEC60947, CE marking |
| UL File No.       | E31593  |
| UL CCN            | DIHS  |
| CSA File No.      | 022086  |
| CSA Class No.     | 1437-01   |
| NA Certification  | UL Listed, CSA certified                        |
| Suitable for      | Refer to main component information             |

**Technical data according to ETIM 4.0**

|      |  |  |   |
|------|--|--|---|
| Type |  |  | - |
|------|--|--|---|

**Dimensions**



① 3 pole

② 4 pole

### Additional product information (links)

AWA1230-2004 (IL01219013Z) Connection options and covers

[ftp://ftp.moeller.net/DOCUMENTATION/AWA\\_INSTRUCTIONS/20040905.pdf](ftp://ftp.moeller.net/DOCUMENTATION/AWA_INSTRUCTIONS/20040905.pdf)