

Extension shaft

Part no.

NZM1/2-XV6

Article no.

260191



Max. mounting depth: 600 mm

Delivery programme

For use with

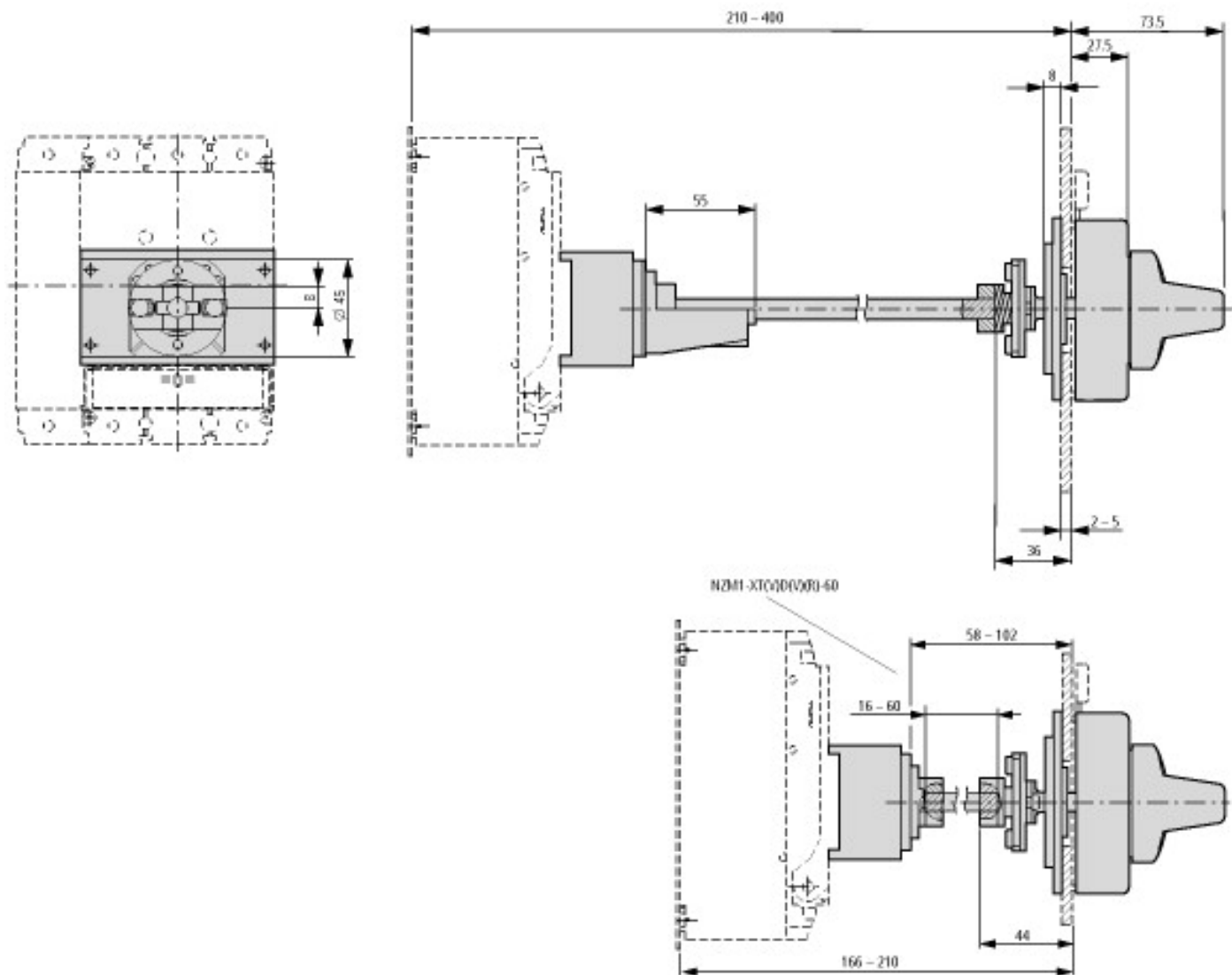
Max. mounting depth: 600 mm

NZM1(-4), PN1(-4), N(S)1(-4)
NZM2(-4), PN2(-4), N(S)2(-4)

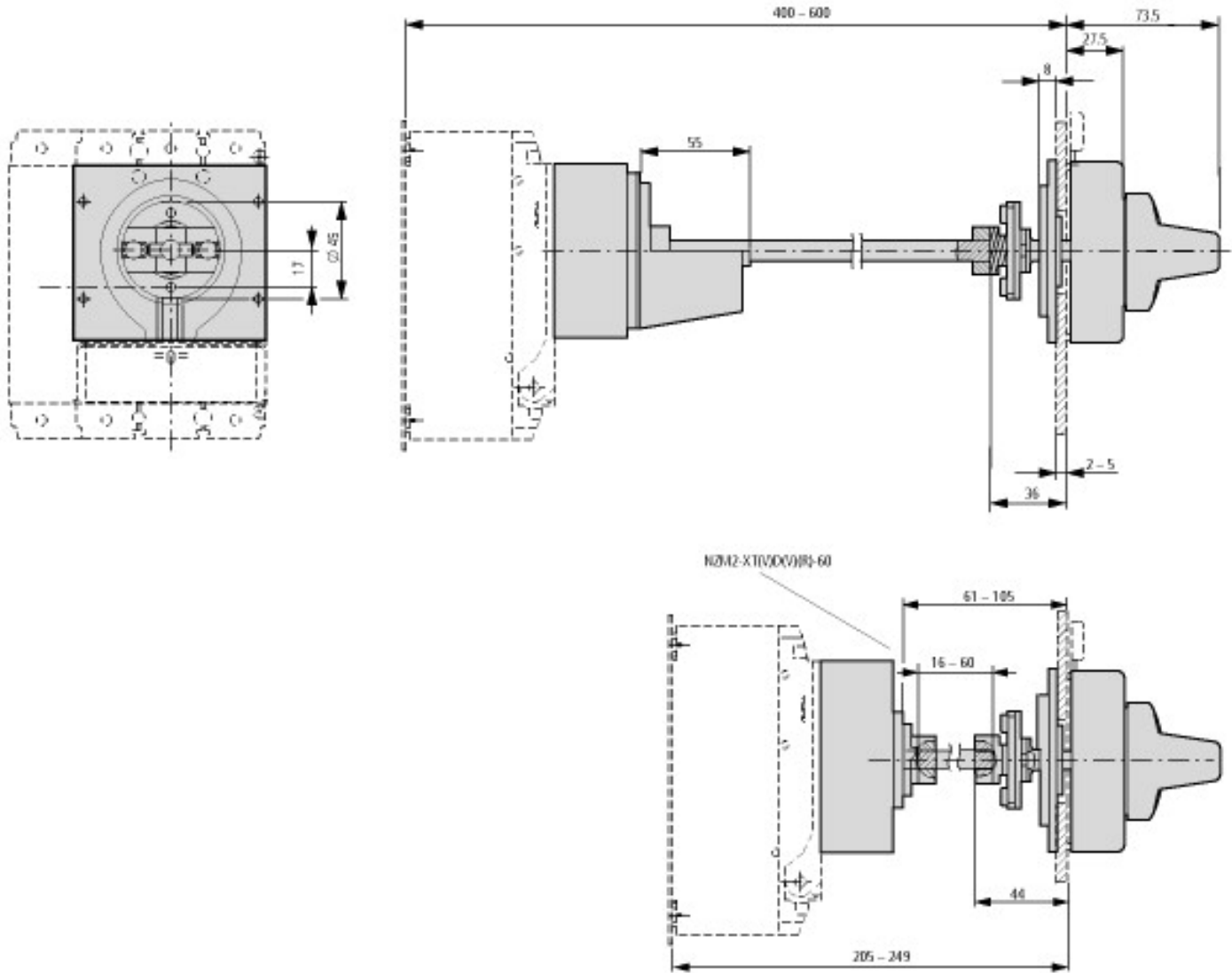
Notes

Circuit-breaker can also be installed in a lying position 90 ° left/right, with the handle still in the same position.

Dimensions



in connection with NZM1-XT(V)(R) door coupling rotary handle



in connection with NZM2-XT(V)(D)(V)(R) door coupling rotary handle

[Additional product information \(links\)](#)