



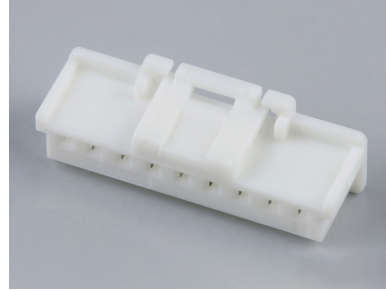
Part Number : [5023510900](#)

Product Description : DuraClik Wire-to-Board Receptacle Housing, Single Row, 9 Circuits, Natural

Series Number : 502351

Status : Active

Product Category : Connector Housings



Documents & Resources

Drawings

[Drawing 5023510900_sd.pdf](#)

3D Models and Design Files

[3D Model 5023510900_stp.zip](#)

[3D Model PDF 5023510900.pdf](#)


Specifications

[Packaging Specification PK-502351-001-001.pdf](#)

[Product Specification PS-502351-002-001.pdf](#)

Product Environment Compliance

Compliance

GADSL/IMDS	Duty-To-Declare
China RoHS	
EU ELV	Compliant per 2000/53/EC
Low-Halogen Status	Not Low-Halogen per IEC 61249-2-21
REACH SVHC	Not Contained per D(2022)9120-DC (17 Jan 2023)
EU RoHS	Compliant per EU 2015/863

[Multiple Part Product Compliance Statements](#)

- Eu RoHS
- REACH SVHC
- Low-Halogen

[Multiple Part Industry Compliance Documents](#)

- IPC 1752A Class C

- IPC 1752A Class D
- Molex Product Compliance Declaration
- IEC-62474
- chemSHERPA (xml)

EU RoHS Certificate of Compliance

Part Details

General

Status	Active
Category	Connector Housings
Series	502351
Description	DuraClik Wire-to-Board Receptacle Housing, Single Row, 9 Circuits, Natural
Application	Automotive, Signal, Wire-to-Board
Comments	Molex part has an inner-locking system versus an outer-locking system. Molex part with tail protection feature.
Product Family	DuraClik Connector System
Product Name	DuraClik
UPC	887191656984

Electrical

Current - Maximum per Contact	3.0A
-------------------------------	------

Physical

Circuits (maximum)	9
Color - Resin	Natural
Gender	Receptacle
Glow-Wire Capable	No
Keying to Mating Part	Yes
Lock to Mating Part	Yes
Net Weight	0.358/g
Number of Rows	1
Packaging Type	Bag
Panel Mount	No

Pitch - Mating Interface	2.00mm
Polarized to Mating Part	Yes
Temperature Range - Operating	-40° to +105°C

Mates With / Use With

Mates with Part(s)

Description	Part Number
DuraClik Right-Angle Single Row Headers	<u>502352</u>
DuraClik Vertical Single Row Headers	<u>560020</u>

Use with Part(s)

Description	Part Number
Pre-Crimped Lead DuraClik Female-to-DuraClik Female, Tin (Sn) Plating, 150.00mm Length, 26 AWG, Black	<u>/content/molex/molex-dot-com/us/en/products/product-page.html/797581008.html</u>
Pre-Crimped Lead DuraClik Female-to-DuraClik Female, Tin (Sn) Plating, 300.00mm Length, 26 AWG, Black	<u>/content/molex/molex-dot-com/us/en/products/product-page.html/797581009.html</u>
DuraClik Female Crimp Terminals	<u>560085</u>
Micro-Latch Female Crimp Terminals	<u>50212</u>
DuraClik Female Terminals	<u>56161</u>