



## NWS21.1WS

- with two or three switch positions
- hygienic design
- Protection class IP69K
- Mounting hole 22.3 mm

## Data

### Ordering data

Product type description	NWS21.1WS
Article number (order number)	101164775
EAN (European Article Number)	4250116200368
eCl@ss number, version 12.0	27-37-12-13
eCl@ss number, version 11.0	27-37-12-13
eCl@ss number, version 9.0	27-37-12-13
ETIM number, version 7.0	EC000222
ETIM number, version 6.0	EC000222

### Approvals - Standards

Certificates	BG cULus
--------------	-------------

### General data

Standards	EN IEC 60947-5-1 EN IEC 60947-1
Versions	Selector switch
Design	Long toggle
Installation conditions (mechanical)	arbitrarily
Sealing type	Membrane Lip gaskets
Material of the operators	ABS
Material of the front ring	ABS, chrome-plated
Colour of the operating element	White
Colour of the front ring	Silver
Colour of the bellows	White
Gross weight	35 g

## General data - Features

Latching	Yes
Fully insulated	Yes
Number of plunger	1
Number of switch positions	2
Number of contact elements, maximum	3

## Mechanical data

Unlocking	Rotating unlatcher
Mechanical life, minimum	100,000 Operations
Switching angle, right	70 °
Actuating force, approx.	0.2 N
Mounting	Mounting flange EFM
Tightening torque of the screw	0.6 Nm

## Mechanical data - Dimensions

Height	11 mm
diameters for the actuating heads	44.5 mm
Length of the handle	46 mm
Mounting diameter	22.3 mm
Thickness, of the front panel, minimum	1.5 mm
Thickness of the front panel, maximum	6 mm
Spacing	50 x 60 mm

## Ambient conditions

Degree of protection	IP67 IP69K
Ambient temperature	+0 ... +80 °C
Resistance to vibrations	10 - 150 Hz (0.5 mm / 5 g)
Resistance to shock	50 g

## Electrical data

Switching element	latching
-------------------	----------

## Ordering code

Product type description:

-

<b>(1)DT(8)(2)</b>	Pushbutton
<b>(1)DM(2)</b>	Pushbutton with diaphragm for dust protection
<b>(1)DL(8)(2)</b>	Illuminated pushbutton
<b>(1)DLM(2)</b>	Illuminated pushbutton with diaphragm for dust protection
<b>(1)ML(2)</b>	Indicator light with flat collar

<b>(1)MLH(2)</b>	Indicator light with high collar
<b>(1)DP(3)(8)(2)</b>	Mushroom head impact button without latching
<b>(1)DTP(3)(8)(2)</b>	Mushroom head impact button without latching (only N-programm)
<b>(1)DLP(3)(8)(2)</b>	Mushroom head impact button illuminated, without latching (only N programme)
<b>(1)DRR(3)(8)(2)</b>	Mushroom head impact button with latching, unlock by turning and pulling (pulling only in N programme)
<b>(1)DRZ(3)(8)(2)</b>	Mushroom head impact button with latching, unlock by pulling
<b>(1)WS21(4)(5)</b>	Selector switch with 2 positions:
<b>(1)WT21(4)(5)</b>	Selector switch with 1 momentary position
<b>(1)WS32(4)(5)</b>	Selector switch with 3 maintained positions
<b>(1)WT32(4)(5)</b>	Wahlschalter mit 2 Taststellungen
<b>(1)WST32(4)(5)</b>	Selector switch: switching, latching
<b>(1)WTS32(4)(5)</b>	Selector switch: latching, switching
<b>(1)SS21S(4)(5)</b>	Key-operated selector switch with 2 maintained positions
<b>(1)ST21S(4)(5)</b>	Key-operated selector switch with 1 momentary position
<b>(1)SS32S(4)(5)</b>	Key-operated selector switch with 3 maintained positions
<b>(1)ST32S(4)(5)</b>	Key-operated selector switch with 2 momentary positions, left and right
<b>(1)SST32S(4)(5)</b>	Key-operated selector switch: switching, latching
<b>(1)STS32S(4)(5)</b>	Key-operated selector switch: latching, switching

**B**

**Blanking plug**

(1)

---

- **Command and signalling devices:**

**E** "E" program

**N** "N" program

**R** "R" program

(2)

---

- **Colour of button surface:**

<b>SW</b>	Black
<b>GB</b>	Yellow
<b>RT</b>	Red
<b>GN</b>	Green
<b>WS</b>	White
<b>BL</b>	Blue
<b>GR</b>	Grey

(3)

---

-	<b>Head diameter of mushroom head impact button 30 mm:</b>
<b>30</b>	30 mm
<b>35</b>	35 mm
<b>40</b>	40 mm
<b>42</b>	42 mm
<b>45</b>	45 mm
<b>50</b>	50 mm
<b>55</b>	55 mm
<b>70</b>	70 mm

(4)

---

-	<b>Toggle length in mm:</b>
<b>without</b>	Short toggle
<b>.1</b>	Long toggle

(5)

---

-	<b>Colour of toggle:</b>
<b>without</b>	Grey
<b>WS</b>	White

(6)

---

-	<b>Key-withdrawal position (3 positions):</b>
---	---

<b>1</b>	Position left
<b>2</b>	Position middle
<b>3</b>	Position right

(7)

- **Key-withdrawal position (2 positions):**

<b>1</b>	Position left
<b>2</b>	Position right

(8)

- **Colour of diaphragm (only N programme):**

<b>without</b>	White
<b>GR/</b>	Black
<b>BL/</b>	Blue

## Pictures

### Product picture (catalogue individual photo)



ID: knws-f03  
 | 223.4 kB | .jpg | 352.425 x 388.056 mm - 999 x 1100 px - 72 dpi  
 | 39.5 kB | .png | 74.083 x 81.492 mm - 210 x 231 px - 72 dpi

## System components

### Contact element



**EF03.1**

- Screw connection
- Mounting flange position 1
- 13-14 (Contact labelling)



**EF03.2**

- Screw connection
- Mounting flange position 2
- 23-24 (Contact labelling)



**EF03.3**

- Screw connection
- Mounting flange position 3
- 33-34 (Contact labelling)
- Suitable for EMERGENCY-OFF



**EF033.1**

- Screw connection
- Mounting flange position 1
- 13-14; 23-24 (Contact labelling)
- Suitable for EMERGENCY-OFF



**EF033.2**

- Screw connection
- Mounting flange position 2
- 33-34; 43-44 (Contact labelling)
- Suitable for EMERGENCY-OFF



**EF033.3**

- Screw connection
- Mounting flange position 3
- 53-54; 63-64 (Contact labelling)
- Suitable for EMERGENCY-OFF



**EF033F.1**

- Flat plug-in connector
- Mounting flange position 1
- 13-14; 23-24 (Contact labelling)
- Suitable for EMERGENCY-OFF



**EF033F.2**

- Flat plug-in connector
- Mounting flange position 2
- 33-34; 43-44 (Contact labelling)
- Suitable for EMERGENCY-OFF



**EF033F.3**

- Flat plug-in connector
- Mounting flange position 3
- 53-54; 63-64 (Contact labelling)
- Suitable for EMERGENCY-OFF



**EF03F.1**

- Flat plug-in connector
- Mounting flange position 1
- 13-14 (Contact labelling)





**EF03F.2**

- Flat plug-in connector
- Mounting flange position 2
- 23-24 (Contact labelling)



**EF03F.3**

- Flat plug-in connector
- Mounting flange position 3
- 33-34 (Contact labelling)
- Suitable for EMERGENCY-OFF



**EF10.1**

- Screw connection
- Mounting flange position 1
- 11-12 (Contact labelling)



**EF10.2**

- Screw connection
- Mounting flange position 2
- 21-22 (Contact labelling)



**EF10.3**

- Screw connection
- Mounting flange position 3
- 31-32 (Contact labelling)

**EF102.2**

- Screw connection
- Mounting flange position 2
- 31-32; 43-44 (Contact labelling)

**EF103.1**

- Screw connection
- Mounting flange position 1
- 11-12; 23-24 (Contact labelling)

**EF103.2**

- Screw connection
- Mounting flange position 2
- 31-32; 43-44 (Contact labelling)

**EF103.3**

- Screw connection
- Mounting flange position 3
- 51-52; 63-64 (Contact labelling)

**EF103F.1**

- Flat plug-in connector
- Mounting flange position 1
- 11-12; 23-24 (Contact labelling)



**EF103F.2**

- Flat plug-in connector
- Mounting flange position 2
- 31-32; 43-44 (Contact labelling)



**EF10F.1**

- Flat plug-in connector
- Mounting flange position 1
- 11-12 (Contact labelling)



**EF10F.2**

- Flat plug-in connector
- Mounting flange position 2
- 21-22 (Contact labelling)



**EF10F.3**

- Flat plug-in connector
- Mounting flange position 3
- 31-32 (Contact labelling)



**EF110.1**

- Screw connection
- Mounting flange position 1
- 11-12; 21-22 (Contact labelling)

**EF110.2**

- Screw connection
- Mounting flange position 2
- 31-32; 41-42 (Contact labelling)

**EF110.3**

- Screw connection
- Mounting flange position 3
- 51-52; 61-62 (Contact labelling)

**EF110F.1**

- Flat plug-in connector
- Mounting flange position 1
- 11-12; 21-22 (Contact labelling)

**EF110F.2**

- Flat plug-in connector
- Mounting flange position 2
- 31-32; 41-42 (Contact labelling)

**EF110F.3**

- Flat plug-in connector
- Mounting flange position 3
- 51-52; 61-62 (Contact labelling)

**EF140.1**

- Screw connection
- Mounting flange position 1
- 11-12; 21-22 (Contact labelling)

**EF140.2**

- Screw connection
- Mounting flange position 2
- 31-32; 41-42 (Contact labelling)

**EFK 103.1**

- Cage clamps
- Mounting flange position 1
- 11-12; 23-24 (Contact labelling)

**EFK03.1**

- Cage clamps
- Mounting flange position 1
- 13-14 (Contact labelling)

**EFK03.2**

- Cage clamps
- Mounting flange position 2
- 23-24 (Contact labelling)
- Suitable for EMERGENCY-OFF

**EFK03.3**

- Cage clamps
- Mounting flange position 3
- 33-34 (Contact labelling)
- Suitable for EMERGENCY-OFF

**EFK033.1**

- Cage clamps
  - Mounting flange position 1
  - 13-14; 23-24 (Contact labelling)
  - Suitable for EMERGENCY-OFF
- 

**EFK10.1**

- Cage clamps
  - Mounting flange position 1
  - 11-12 (Contact labelling)
- 

**EFK10.2**

- Cage clamps
  - Mounting flange position 2
  - 21-22 (Contact labelling)
- 

**EFK10.3**

- Cage clamps
  - Mounting flange position 3
  - 31-32 (Contact labelling)
- 

**EFK103.2**

- Cage clamps
  - Mounting flange position 2
  - 31-32; 43-44 (Contact labelling)
- 

**EFK30.1**

- Cage clamps
  - Mounting flange position 1
  - 11-12 (Contact labelling)
  - Suitable for EMERGENCY-OFF
-



#### **EFK30.2**

- Cage clamps
- Mounting flange position 2
- 21-22 (Contact labelling)
- Suitable for EMERGENCY-OFF



#### **EFK30.3**

- Cage clamps
- Mounting flange position 3
- 31-32 (Contact labelling)
- Suitable for EMERGENCY-OFF

## **Accessories**



#### **NZSO-V4A**

- hygienic design
- Protection class IP69K



#### **NWSP21GR**

- for 2 position versions
- Grey
- Alternative to key-switch in hygiene area
- hygienic design
- Protection class IP69K
- Mounting hole 22.3 mm



#### **NUE**

- Adapter for fitting the device heads of the series N in hole diameter 30.5 mm
- hygienic design
- Protection class IP69K



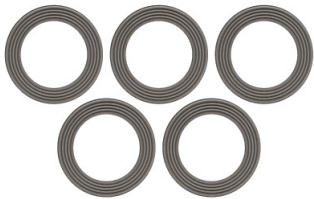
#### **NZSO2/V4A**

- hygienic design
- Protection class IP69K

### **Spare part**



#### **EFM**



#### **EDT-25-5ST**

- hygienic design
- Protection class IP69K

### **ASSEMBLY\_HOUSING**



#### **NBG311**

- for application in food producing machinery
- Enclosure seal for food machinery
- Stainless steel enclosure





**NBG632/NM**

- for application in food producing machinery
- Enclosure seal for food machinery
- Stainless steel enclosure



**NBG633**

- for application in food producing machinery
- Enclosure seal for food machinery
- Stainless steel enclosure



**NBG633/54.50**

- for application in food producing machinery
- Enclosure seal for food machinery
- Stainless steel enclosure



**NBG633/54.50/KLE/NSK**

- for application in food producing machinery
- Enclosure seal for food machinery
- Stainless steel enclosure



**NBG633/54.50/NSK**

- for application in food producing machinery
- Enclosure seal for food machinery
- Stainless steel enclosure



**NBG633/NM**

- for application in food producing machinery
- Enclosure seal for food machinery
- Stainless steel enclosure



**NBG664/70.60/NSK**

- for application in food producing machinery
- Enclosure seal for food machinery
- Stainless steel enclosure



**NBG664/NM**

- for application in food producing machinery
- Enclosure seal for food machinery
- Stainless steel enclosure



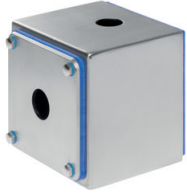
**NBG665**

- for application in food producing machinery
- Enclosure seal for food machinery
- Stainless steel enclosure



**NBG665/65.55**

- for application in food producing machinery
- Enclosure seal for food machinery
- Stainless steel enclosure



#### **NBGLC11.1**

- Stainless steel enclosure
  - for application in food producing machinery
  - Protection class IP69K
  - Variable sizes with up to five holes for command devices
  - No additional mounting accessories such as spacers required thanks to flange seal under the enclosure
- 



#### **NBGLC11.3**

- Stainless steel enclosure
  - for application in food producing machinery
  - Protection class IP69K
  - Variable sizes with up to five holes for command devices
  - No additional mounting accessories such as spacers required thanks to flange seal under the enclosure
- 



#### **NBGLC32.1**

- Stainless steel enclosure
  - for application in food producing machinery
  - Protection class IP69K
  - Variable sizes with up to five holes for command devices
  - No additional mounting accessories such as spacers required thanks to flange seal under the enclosure
- 



#### **NBGLC32.1/NSK**

- Stainless steel enclosure
  - for application in food producing machinery
  - Protection class IP69K
  - Variable sizes with up to five holes for command devices
  - No additional mounting accessories such as spacers required thanks to flange seal under the enclosure
- 



#### **NBGLC32.3**

- Stainless steel enclosure
  - for application in food producing machinery
  - Protection class IP69K
  - Variable sizes with up to five holes for command devices
  - No additional mounting accessories such as spacers required thanks to flange seal under the enclosure
-



#### **NBGLC32.3/NSK**

- Stainless steel enclosure
  - for application in food producing machinery
  - Protection class IP69K
  - Variable sizes with up to five holes for command devices
  - No additional mounting accessories such as spacers required thanks to flange seal under the enclosure
- 



#### **NBGLC33.1**

- Stainless steel enclosure
  - for application in food producing machinery
  - Protection class IP69K
  - Variable sizes with up to five holes for command devices
  - No additional mounting accessories such as spacers required thanks to flange seal under the enclosure
- 



#### **NBGLC33.1/NSK**

- Stainless steel enclosure
  - for application in food producing machinery
  - Protection class IP69K
  - Variable sizes with up to five holes for command devices
  - No additional mounting accessories such as spacers required thanks to flange seal under the enclosure
- 



#### **NBGLC33.3**

- Stainless steel enclosure
  - for application in food producing machinery
  - Protection class IP69K
  - Variable sizes with up to five holes for command devices
  - No additional mounting accessories such as spacers required thanks to flange seal under the enclosure
- 



#### **NBGLC33.3/NSK**

- Stainless steel enclosure
  - for application in food producing machinery
  - Protection class IP69K
  - Variable sizes with up to five holes for command devices
  - No additional mounting accessories such as spacers required thanks to flange seal under the enclosure
-



#### **NBGLC54.1**

- Stainless steel enclosure
  - for application in food producing machinery
  - Protection class IP69K
  - Variable sizes with up to five holes for command devices
  - No additional mounting accessories such as spacers required thanks to flange seal under the enclosure
- 



#### **NBGLC54.1/NSK**

- Stainless steel enclosure
  - for application in food producing machinery
  - Protection class IP69K
  - Variable sizes with up to five holes for command devices
  - No additional mounting accessories such as spacers required thanks to flange seal under the enclosure
- 



#### **NBGLC54.3**

- Stainless steel enclosure
  - for application in food producing machinery
  - Protection class IP69K
  - Variable sizes with up to five holes for command devices
  - No additional mounting accessories such as spacers required thanks to flange seal under the enclosure
- 



#### **NBGLC54.3/NSK**

- Stainless steel enclosure
  - for application in food producing machinery
  - Protection class IP69K
  - Variable sizes with up to five holes for command devices
  - No additional mounting accessories such as spacers required thanks to flange seal under the enclosure
- 



#### **NBGLC55.1**

- Stainless steel enclosure
  - for application in food producing machinery
  - Protection class IP69K
  - Variable sizes with up to five holes for command devices
  - No additional mounting accessories such as spacers required thanks to flange seal under the enclosure
-



### **NBGLC55.3**

- Stainless steel enclosure
  - for application in food producing machinery
  - Protection class IP69K
  - Variable sizes with up to five holes for command devices
  - No additional mounting accessories such as spacers required thanks to flange seal under the enclosure
- 

Schmersal, Inc., 115 E Stevens Ave, Suite 208, Valhalla, NY 10595

The details and data referred to have been carefully checked. Images may diverge from original. Further technical data can be found in the manual. Technical amendments and errors possible.

Generated on: 5/28/2024, 9:21 AM