

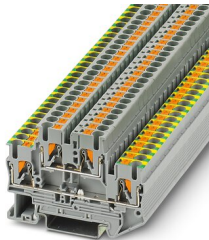
# PTTB 2,5-PE/L - Protective conductor double-level terminal block



3210978

<https://www.phoenixcontact.com/de/produkte/3210978>

Please be informed that the data shown in this PDF document is generated from our Online Catalog. Please find the complete data in the user documentation. Our General Terms of Use for Downloads are valid.



Protective conductor double-level terminal block, nom. voltage: 500 V, nominal current: 24 A, connection method: Push-in connection, 1st and 2nd level, Rated cross section: 2.5 mm<sup>2</sup>, cross section: 0.14 mm<sup>2</sup> - 4 mm<sup>2</sup>, mounting type: NS 35/7,5, NS 35/15, color: gray

## Your advantages

- The Push-in connection terminal blocks are characterized by the system features of the CLIPLINE complete system and by easy and tool-free wiring of conductors with ferrules or solid conductors
- The compact design and front connection enable wiring in a confined space
- In addition to the testing facility in the double function shaft, all terminal blocks provide an additional test connection

## Commercial Data

Item number	3210978
Packing unit	50 pc
Minimum order quantity	50 pc
Sales Key	A1 - Reihenklemmen
Product Key	BE2224
Catalog Page	Page 72 (C-1-2019)
GTIN	4046356419048
Weight per Piece (including packing)	13,05 g
Weight per Piece (excluding packing)	13,05 g
Customs tariff number	85369010
Country of origin	CN

# PTTB 2,5-PE/L - Protective conductor double-level terminal block



3210978

<https://www.phoenixcontact.com/de/produkte/3210978>

## Technical Data

### Product properties

Product type	Ground terminal block
Pitch	5.2 mm
Number of connections	4
Number of rows	2

### Insulation characteristics

Overvoltage category	III
Degree of pollution	3

### Electrical properties

Rated surge voltage	6 kV
Maximum power dissipation for nominal condition	0.77 W

### Connection data

Grounding foot	Yes
Number of connections per level	2
Nominal cross section	2.5 mm <sup>2</sup>

### 1st and 2nd level

Note	Please observe the current carrying capacity of the DIN rails.
Stripping length	8 mm ... 10 mm
Internal cylindrical gage	A3
Connection in acc. with standard	IEC 60947-7-1/IEC 60947-7-2
Conductor cross section rigid	0.14 mm <sup>2</sup> ... 4 mm <sup>2</sup>
Cross section AWG	26 ... 12 (converted acc. to IEC)
Conductor cross section flexible	0.14 mm <sup>2</sup> ... 4 mm <sup>2</sup>
Conductor cross section, flexible [AWG]	26 ... 14 (converted acc. to IEC)
Conductor cross-section flexible (ferrule without plastic sleeve)	0.14 mm <sup>2</sup> ... 2.5 mm <sup>2</sup>
Flexible conductor cross section (ferrule with plastic sleeve)	0.14 mm <sup>2</sup> ... 2.5 mm <sup>2</sup>
2 conductors with the same cross section, flexible, with TWIN ferrule with plastic sleeve	0.5 mm <sup>2</sup>
Nominal current	24 A
Maximum load current	30 A (with 4 mm <sup>2</sup> conductor cross section, rigid)
Nominal voltage	500 V
Nominal cross section	2.5 mm <sup>2</sup>

### 1st and 2nd level Connection cross sections directly pluggable

Conductor cross section rigid	0.34 mm <sup>2</sup> ... 4 mm <sup>2</sup>
Conductor cross-section flexible (ferrule without plastic sleeve)	0.34 mm <sup>2</sup> ... 2.5 mm <sup>2</sup>
Flexible conductor cross section (ferrule with plastic sleeve)	0.34 mm <sup>2</sup> ... 2.5 mm <sup>2</sup>

# PTTB 2,5-PE/L - Protective conductor double-level terminal block



3210978

<https://www.phoenixcontact.com/de/produkte/3210978>

## Dimensions

Width	5.2 mm
End cover width	2.2 mm
Height NS 35/15	55 mm
Height NS 35/7,5	47.5 mm
Height	1.87 "
Length	68 mm
Pitch	5.2 mm

## Material specifications

Color	gray
Flammability rating according to UL 94	V0
Insulating material group	I
Insulating material	PA
Static insulating material application in cold	-60 °C
Temperature index of insulation material (DIN EN 60216-1 (VDE 0304-21))	130 °C
Relative insulation material temperature index (Elec., UL 746 B)	130 °C
Fire protection for rail vehicles (DIN EN 45545-2) R22	HL 1 - HL 3
Fire protection for rail vehicles (DIN EN 45545-2) R23	HL 1 - HL 3
Fire protection for rail vehicles (DIN EN 45545-2) R24	HL 1 - HL 3
Fire protection for rail vehicles (DIN EN 45545-2) R26	HL 1 - HL 3
Calorimetric heat release NFPA 130 (ASTM E 1354)	28 MJ/kg
Surface flammability NFPA 130 (ASTM E 162)	passed
Specific optical density of smoke NFPA 130 (ASTM E 662)	passed
Smoke gas toxicity NFPA 130 (SMP 800C)	passed

## Electrical tests

### Surge voltage test

Test voltage setpoint	7.3 kV
Result	Test passed

### Temperature-rise test

Requirement temperature-rise test	Increase in temperature $\leq$ 45 K
Result	Test passed
Short-time withstand current 2.5 mm <sup>2</sup>	0.3 kA
Short-time withstand current 4 mm <sup>2</sup>	0.48 kA
Result	Test passed

### Power-frequency withstand voltage

Test voltage setpoint	1.89 kV
Result	Test passed

# PTTB 2,5-PE/L - Protective conductor double-level terminal block



3210978

<https://www.phoenixcontact.com/de/produkte/3210978>

## Mechanical properties

### Mechanical data

Open side panel	Yes
-----------------	-----

## Mechanical tests

### Mechanical strength

Result	Test passed
--------	-------------

### Attachment on the carrier

DIN rail/fixing support	NS 35
Test force setpoint	1 N
Result	Test passed

### Test for conductor damage and slackening

Rotation speed	10 rpm
Revolutions	135
Conductor cross section/weight	0.14 mm <sup>2</sup> / 0.2 kg
	2.5 mm <sup>2</sup> / 0.7 kg
	4 mm <sup>2</sup> / 0.9 kg
Result	Test passed

## Environmental and real-life conditions

### Aging

Temperature cycles	192
Result	Test passed

### Needle-flame test

Time of exposure	30 s
Result	Test passed

### Oscillation/broadband noise

Specification	DIN EN 50155 (VDE 0115-200):2008-03
Spectrum	Service life test category 2, bogie-mounted
Frequency	$f_1 = 5 \text{ Hz}$ to $f_2 = 250 \text{ Hz}$
ASD level	6.12 (m/s <sup>2</sup> ) <sup>2</sup> /Hz
Acceleration	3.12g
Test duration per axis	5 h
Test directions	X-, Y- and Z-axis
Result	Test passed

### Shocks

Specification	DIN EN 50155 (VDE 0115-200):2008-03
Pulse shape	Half-sine

# PTTB 2,5-PE/L - Protective conductor double-level terminal block



3210978

<https://www.phoenixcontact.com/de/produkte/3210978>

Acceleration	30g
Shock duration	18 ms
Number of shocks per direction	3
Test directions	X-, Y- and Z-axis (pos. and neg.)
Result	Test passed

## Ambient conditions

Ambient temperature (operation)	-60 °C ... 105 °C (max. short-term operating temperature RTI Elec.)
Ambient temperature (storage/transport)	-25 °C ... 60 °C (for a short time, not exceeding 24 h, -60 °C to +70 °C)
Ambient temperature (assembly)	-5 °C ... 70 °C
Ambient temperature (actuation)	-5 °C ... 70 °C
Permissible humidity (storage/transport)	30 % ... 70 %

## Standards and regulations

Connection in acc. with standard	IEC 60947-7-1/IEC 60947-7-2
----------------------------------	-----------------------------

## Mounting

Mounting type	NS 35/7,5
	NS 35/15

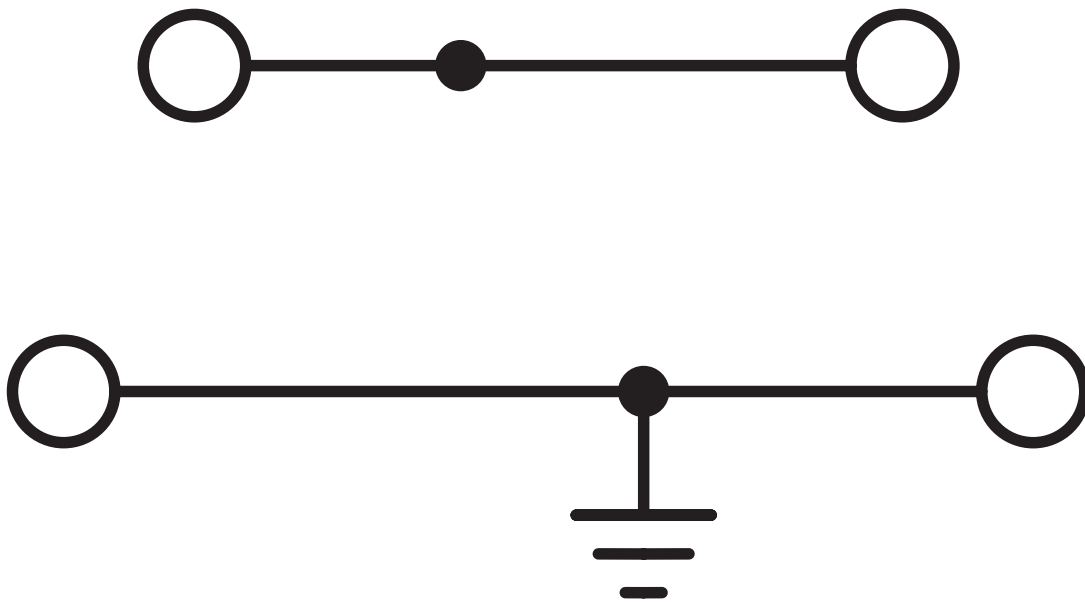
# PTTB 2,5-PE/L - Protective conductor double-level terminal block

3210978

<https://www.phoenixcontact.com/de/produkte/3210978>

## Drawings

Circuit diagram




# PTTB 2,5-PE/L - Protective conductor double-level terminal block




3210978


<https://www.phoenixcontact.com/de/produkte/3210978>

## Approvals

 <b>CSA</b> Approval ID: 13631				
	Nominal Voltage $U_N$	Nominal Current $I_N$	Cross Section AWG	Cross Section $\text{mm}^2$
Use group B				
	300 V	20 A	26 - 12	-
Use group C				
	300 V	20 A	26 - 12	-

 <b>EAC</b> Approval ID: RU C-DE.AI30.B.01102				
---	--	--	--	--

 <b>cULus Recognized</b> Approval ID: E60425				
--	--	--	--	--

 <b>LR</b> Approval ID: LR2371832TA				
---	--	--	--	--

 <b>NK</b> Approval ID: 14ME0912				
--	--	--	--	--

 <b>BV</b> Approval ID: 25278/C1 BV				
---	--	--	--	--

 <b>EAC</b> Approval ID: RU C-DE.BL08.B.00644				
---	--	--	--	--

 <b>LR</b> Approval ID: 14/20056				
--	--	--	--	--

 <b>cULus Recognized</b> Approval ID: E60425				
--	--	--	--	--

# PTTB 2,5-PE/L - Protective conductor double-level terminal block



3210978

<https://www.phoenixcontact.com/de/produkte/3210978>

## Classifications

### ECLASS

ECLASS-11.0	27141141
-------------	----------

### ETIM

ETIM 8.0	EC000901
----------	----------

### UNSPSC

UNSPSC 21.0	39121400
-------------	----------



# PTTB 2,5-PE/L - Protective conductor double-level terminal block



3210978

<https://www.phoenixcontact.com/de/produkte/3210978>

## Environmental Product Compliance


China RoHS	Environmentally friendly use period: unlimited = EFUP-e
	No hazardous substances above threshold values

# PTTB 2,5-PE/L - Protective conductor double-level terminal block

3210978

<https://www.phoenixcontact.com/de/produkte/3210978>

## Accessories

 Note: Applying some accessories below might limit this product.


### FBS 2-5 - Plug-in bridge

3030161

<https://www.phoenixcontact.com/de/produkte/3030161>



Plug-in bridge, pitch: 5.2 mm, number of positions: 2, length: 23 mm, color: red

 Max. current carrying capacity: 20 A

### FBS 3-5 - Plug-in bridge

3030174

<https://www.phoenixcontact.com/de/produkte/3030174>



Plug-in bridge, pitch: 5.2 mm, number of positions: 3, length: 23 mm, color: red

 Max. current carrying capacity: 20 A

# PTTB 2,5-PE/L - Protective conductor double-level terminal block

3210978

<https://www.phoenixcontact.com/de/produkte/3210978>


## FBS 4-5 - Plug-in bridge

3030187

<https://www.phoenixcontact.com/de/produkte/3030187>



Plug-in bridge, pitch: 5.2 mm, number of positions: 4, length: 23 mm, color: red

 Max. current carrying capacity: 20 A

---


## FBS 5-5 - Plug-in bridge

3030190

<https://www.phoenixcontact.com/de/produkte/3030190>



Plug-in bridge, pitch: 5.2 mm, number of positions: 5, length: 23 mm, color: red

 Max. current carrying capacity: 20 A

# PTTB 2,5-PE/L - Protective conductor double-level terminal block

3210978

<https://www.phoenixcontact.com/de/produkte/3210978>


## FBS 10-5 - Plug-in bridge

3030213

<https://www.phoenixcontact.com/de/produkte/3030213>

Plug-in bridge, pitch: 5.2 mm, number of positions: 10, length: 23 mm, color: red



 Max. current carrying capacity: 20 A

---


## FBS 20-5 - Plug-in bridge

3030226

<https://www.phoenixcontact.com/de/produkte/3030226>

Plug-in bridge, pitch: 5.2 mm, number of positions: 20, color: red



 Max. current carrying capacity: 20 A

# PTTB 2,5-PE/L - Protective conductor double-level terminal block

3210978

<https://www.phoenixcontact.com/de/produkte/3210978>


## FBS 50-5 - Plug-in bridge

3038930

<https://www.phoenixcontact.com/de/produkte/3038930>



Plug-in bridge, pitch: 5.2 mm, number of positions: 50, color: red

 Max. current carrying capacity: 20 A

---


## FBSR 2-5 - Plug-in bridge

3033702

<https://www.phoenixcontact.com/de/produkte/3033702>



Plug-in bridge, pitch: 5.2 mm, number of positions: 2, color: red

 Max. current carrying capacity: 16 A

# PTTB 2,5-PE/L - Protective conductor double-level terminal block

3210978

<https://www.phoenixcontact.com/de/produkte/3210978>


## FBSR 3-5 - Plug-in bridge

3001591

<https://www.phoenixcontact.com/de/produkte/3001591>



Plug-in bridge, pitch: 5.2 mm, number of positions: 3, color: red

 Max. current carrying capacity: 16 A

---


## FBSR 4-5 - Plug-in bridge

3001592

<https://www.phoenixcontact.com/de/produkte/3001592>



Plug-in bridge, pitch: 5.2 mm, number of positions: 4, color: red

 Max. current carrying capacity: 16 A

---

# PTTB 2,5-PE/L - Protective conductor double-level terminal block

3210978

<https://www.phoenixcontact.com/de/produkte/3210978>


## FBSR 5-5 - Plug-in bridge

3001593

<https://www.phoenixcontact.com/de/produkte/3001593>



Plug-in bridge, pitch: 5.2 mm, number of positions: 5, color: red

 Max. current carrying capacity: 16 A

---


## FBSR 10-5 - Plug-in bridge

3033710

<https://www.phoenixcontact.com/de/produkte/3033710>



Plug-in bridge, pitch: 5.2 mm, number of positions: 10, color: red

 Max. current carrying capacity: 16 A

# PTTB 2,5-PE/L - Protective conductor double-level terminal block

3210978

<https://www.phoenixcontact.com/de/produkte/3210978>

## FBS 2-5 BU - Plug-in bridge

3036877

<https://www.phoenixcontact.com/de/produkte/3036877>



Plug-in bridge, pitch: 5.2 mm, number of positions: 2, color: blue

 Max. current carrying capacity: 20 A

---


## FBS 3-5 BU - Plug-in bridge

3036880

<https://www.phoenixcontact.com/de/produkte/3036880>



Plug-in bridge, pitch: 5.2 mm, number of positions: 3, color: blue

 Max. current carrying capacity: 20 A



# PTTB 2,5-PE/L - Protective conductor double-level terminal block

3210978

<https://www.phoenixcontact.com/de/produkte/3210978>


## FBS 4-5 BU - Plug-in bridge

3036893

<https://www.phoenixcontact.com/de/produkte/3036893>



Plug-in bridge, pitch: 5.2 mm, number of positions: 4, color: blue

 Max. current carrying capacity: 20 A

---


## FBS 5-5 BU - Plug-in bridge

3036903

<https://www.phoenixcontact.com/de/produkte/3036903>



Plug-in bridge, pitch: 5.2 mm, number of positions: 5, color: blue

 Max. current carrying capacity: 20 A

# PTTB 2,5-PE/L - Protective conductor double-level terminal block

3210978

<https://www.phoenixcontact.com/de/produkte/3210978>


## FBS 10-5 BU - Plug-in bridge

3036916

<https://www.phoenixcontact.com/de/produkte/3036916>

Plug-in bridge, pitch: 5.2 mm, number of positions: 10, color: blue



 Max. current carrying capacity: 20 A

---


## FBS 20-5 BU - Plug-in bridge

3036929

<https://www.phoenixcontact.com/de/produkte/3036929>

Plug-in bridge, pitch: 5.2 mm, number of positions: 20, color: blue



 Max. current carrying capacity: 20 A

# PTTB 2,5-PE/L - Protective conductor double-level terminal block

3210978

<https://www.phoenixcontact.com/de/produkte/3210978>


## FBS 50-5 BU - Plug-in bridge

3032114

<https://www.phoenixcontact.com/de/produkte/3032114>



Plug-in bridge, pitch: 5.2 mm, number of positions: 50, color: blue

 Max. current carrying capacity: 20 A

---

## ATP-STTB 4 - Partition plate

3030747

<https://www.phoenixcontact.com/de/produkte/3030747>

Partition plate, length: 88.7 mm, width: 2 mm, height: 53 mm, color: gray



# PTTB 2,5-PE/L - Protective conductor double-level terminal block

3210978

<https://www.phoenixcontact.com/de/produkte/3210978>

## D-PTTB 2,5 - End cover

3211634

<https://www.phoenixcontact.com/de/produkte/3211634>

End cover, length: 68 mm, width: 2.2 mm, height: 39.6 mm, color: gray



---

## SZF 1-0,6X3,5 - Screwdriver

1204517

<https://www.phoenixcontact.com/de/produkte/1204517>

Actuation tool, for ST terminal blocks, also suitable for use as a bladed screwdriver, size: 0.6 x 3.5 x 100 mm, 2-component grip, with non-slip grip



# PTTB 2,5-PE/L - Protective conductor double-level terminal block

3210978

<https://www.phoenixcontact.com/de/produkte/3210978>

## STP 5-2 - Marker carriers

0800967

<https://www.phoenixcontact.com/de/produkte/0800967>



Marker carriers, snaps into STTB 2,5, STTB 4, PTTB 2,5, and PTTB 4 double-level spring-cage terminal blocks, can be marked with UC-TM 5, UC-TMF 5, UCT-TM 5, UCT-TMF 5, ZB 5, or ZBF 5, gray, unlabeled, mounting type: plug in, lettering field size: 5 x 10.5 mm

---

## STP 5-2/S - Marker carriers

0800970

<https://www.phoenixcontact.com/de/produkte/0800970>



Marker carriers, snaps into the ZFKK 1,5 double-level spring-cage terminal block with MSTBV or ICV load contact, can be marked with UC-TM 5, UC-TMF 5, UCT-TM 5, UCT-TMF 5, ZB 5, or ZBF 5, gray, unlabeled, mounting type: plug in, lettering field size: 5 x 10.5 mm

# PTTB 2,5-PE/L - Protective conductor double-level terminal block

3210978

<https://www.phoenixcontact.com/de/produkte/3210978>

## PT-IL - Mounting material

3208090

<https://www.phoenixcontact.com/de/produkte/3208090>

Operating decal for the push-in Technology



---

## ST-BW - Actuation tool

1207608

<https://www.phoenixcontact.com/de/produkte/1207608>

Actuation tool, for all 2.5 mm<sup>2</sup> - 4.0 mm<sup>2</sup> spring-cages



# PTTB 2,5-PE/L - Protective conductor double-level terminal block

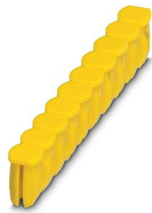
3210978

<https://www.phoenixcontact.com/de/produkte/3210978>

## CEC 2,5 - Filler plugs

3062757

<https://www.phoenixcontact.com/de/produkte/3062757>



Cover for conductor shaft, 10-pos., for spring cage terminal blocks (ST) and terminal blocks with push-in technology (PT) with a width of 5.2 mm

---

## P-CO 2-5 R47K - Component connector

3032447

<https://www.phoenixcontact.com/de/produkte/3032447>



Component connector, with 47 kOhm resistance for wire-break monitoring, pitch: 5.2 mm, length: 8.9 mm, width: 4.1 mm, height: 34.8 mm, number of positions: 2, color: black

# PTTB 2,5-PE/L - Protective conductor double-level terminal block

3210978

<https://www.phoenixcontact.com/de/produkte/3210978>

## WS PT 2,5 - Warning label

1029026

<https://www.phoenixcontact.com/de/produkte/1029026>



Warning label, yellow/black, labeled: Lightning flash, mounting type: plug in, for terminal block width: 5.2 mm

---

## WS-DIO PT 2,5 - Warning label

1029037

<https://www.phoenixcontact.com/de/produkte/1029037>



Warning label, yellow/black, labeled: Diode, mounting type: plug in, for terminal block width: 5.2 mm



# PTTB 2,5-PE/L - Protective conductor double-level terminal block

3210978

<https://www.phoenixcontact.com/de/produkte/3210978>

## NS 35/ 7,5 PERF 2000MM - DIN rail perforated

0801733

<https://www.phoenixcontact.com/de/produkte/0801733>



DIN rail perforated, acc. to EN 60715, material: Steel, galvanized, passivated with a thick layer, Standard profile, color: silver, Pack of 25 (50 m)

---

## NS 35/ 7,5 UNPERF 2000MM - DIN rail, unperforated

0801681

<https://www.phoenixcontact.com/de/produkte/0801681>



DIN rail, unperforated, acc. to EN 60715, material: Steel, galvanized, passivated with a thick layer, Standard profile, color: silver, Pack of 25 (50 m)

# PTTB 2,5-PE/L - Protective conductor double-level terminal block

3210978

<https://www.phoenixcontact.com/de/produkte/3210978>

## NS 35/ 7,5 WH PERF 2000MM - DIN rail perforated

1204119

<https://www.phoenixcontact.com/de/produkte/1204119>



DIN rail perforated, acc. to EN 60715, material: Steel, Galvanized, white passivated, Standard profile, color: silver, Pack of 25 (50 m)

---

## NS 35/ 7,5 WH UNPERF 2000MM-VPE 10 - DIN rail, unperforated

1204122

<https://www.phoenixcontact.com/de/produkte/1204122>



DIN rail, unperforated, acc. to EN 60715, material: Steel, Galvanized, white passivated, Standard profile, color: silver, Pack of 10 (20 m)

# PTTB 2,5-PE/L - Protective conductor double-level terminal block

3210978

<https://www.phoenixcontact.com/de/produkte/3210978>

## NS 35/ 7,5 AL UNPERF 2000MM - DIN rail, unperforated

0801704

<https://www.phoenixcontact.com/de/produkte/0801704>



DIN rail, unperforated, acc. to EN 60715, material: Aluminum, uncoated, Standard profile, color: silver, Pack of 25 (50 m)

---

## NS 35/ 7,5 ZN PERF 2000MM - DIN rail perforated

1206421

<https://www.phoenixcontact.com/de/produkte/1206421>



DIN rail perforated, acc. to EN 60715, material: Steel, galvanized, Standard profile, color: silver, Pack of 25 (50 m)

# PTTB 2,5-PE/L - Protective conductor double-level terminal block

3210978

<https://www.phoenixcontact.com/de/produkte/3210978>

## NS 35/ 7,5 ZN UNPERF 2000MM - DIN rail, unperforated

1206434

<https://www.phoenixcontact.com/de/produkte/1206434>



DIN rail, unperforated, acc. to EN 60715, material: Steel, galvanized, Standard profile, color: silver, Pack of 25 (50 m)

---

## NS 35/ 7,5 CU UNPERF 2000MM-VPE 10 - DIN rail, unperforated

0801762

<https://www.phoenixcontact.com/de/produkte/0801762>



DIN rail, unperforated, acc. to EN 60715, material: Copper, uncoated, Standard profile, color: copper-colored, Pack of 10 (20 m)

# PTTB 2,5-PE/L - Protective conductor double-level terminal block

3210978

<https://www.phoenixcontact.com/de/produkte/3210978>

## NS 35/ 7,5 CAP - End cap

1206560

<https://www.phoenixcontact.com/de/produkte/1206560>

DIN rail end piece, for DIN rail NS 35/7.5



---

## NS 35/15 PERF 2000MM - DIN rail perforated

1201730

<https://www.phoenixcontact.com/de/produkte/1201730>



DIN rail perforated, similar to EN 60715, material: Steel, galvanized, passivated with a thick layer, Standard profile, color: silver, Pack of 25 (50 m)

# PTTB 2,5-PE/L - Protective conductor double-level terminal block

3210978

<https://www.phoenixcontact.com/de/produkte/3210978>

## NS 35/15 UNPERF 2000MM - DIN rail, unperforated

1201714

<https://www.phoenixcontact.com/de/produkte/1201714>



DIN rail, unperforated, similar to EN 60715, material: Steel, galvanized, passivated with a thick layer, Standard profile, color: silver, Pack of 25 (50 m)

---

## NS 35/15 WH PERF 2000MM - DIN rail perforated

0806602

<https://www.phoenixcontact.com/de/produkte/0806602>



DIN rail perforated, similar to EN 60715, material: Steel, Galvanized, white passivated, Standard profile, color: white, Pack of 25 (50 m)

# PTTB 2,5-PE/L - Protective conductor double-level terminal block

3210978

<https://www.phoenixcontact.com/de/produkte/3210978>

## NS 35/15 WH UNPERF 2000MM-VPE 10 - DIN rail, unperforated

1204135

<https://www.phoenixcontact.com/de/produkte/1204135>



DIN rail, unperforated, similar to EN 60715, material: Steel, Galvanized, white passivated, Standard profile, color: silver, Pack of 10 (20 m)

---

## NS 35/15 AL UNPERF 2000MM - DIN rail, unperforated

1201756

<https://www.phoenixcontact.com/de/produkte/1201756>



DIN rail, unperforated, similar to EN 60715, material: Aluminum, uncoated, Standard profile, color: silver

# PTTB 2,5-PE/L - Protective conductor double-level terminal block

3210978

<https://www.phoenixcontact.com/de/produkte/3210978>

## NS 35/15 ZN PERF 2000MM - DIN rail perforated

1206599

<https://www.phoenixcontact.com/de/produkte/1206599>



DIN rail perforated, similar to EN 60715, material: Steel, galvanized, Standard profile, color: silver, Pack of 25 (50 m)

---

## NS 35/15 ZN UNPERF 2000MM - DIN rail, unperforated

1206586

<https://www.phoenixcontact.com/de/produkte/1206586>



DIN rail, unperforated, similar to EN 60715, material: Steel, galvanized, Standard profile, color: silver, Pack of 25 (50 m)



# PTTB 2,5-PE/L - Protective conductor double-level terminal block

3210978

<https://www.phoenixcontact.com/de/produkte/3210978>

## NS 35/15 CU UNPERF 2000MM-VPE 10 - DIN rail, unperforated

1201895

<https://www.phoenixcontact.com/de/produkte/1201895>



DIN rail, unperforated, similar to EN 60715, material: Copper, uncoated, Standard profile, color: copper-colored, Pack of 10 (20 m)

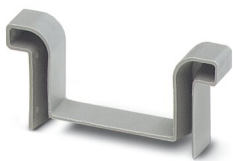
---

## NS 35/15 CAP - End cap

1206573

<https://www.phoenixcontact.com/de/produkte/1206573>

DIN rail end piece, for DIN rail NS 35/15



# PTTB 2,5-PE/L - Protective conductor double-level terminal block

3210978

<https://www.phoenixcontact.com/de/produkte/3210978>

## NS 35/15-2,3 UNPERF 2000MM-VPE 10 - DIN rail, unperforated

1201798

<https://www.phoenixcontact.com/de/produkte/1201798>



DIN rail, unperforated, acc. to EN 60715, material: Steel, galvanized, passivated with a thick layer, Standard profile 2.3 mm, color: silver, Pack of 10 (20 m)

---

## ZBF 5:UNBEDRUCKT - Zack Marker strip, flat

0808642

<https://www.phoenixcontact.com/de/produkte/0808642>



Zack Marker strip, flat, Strip, white, unlabeled, can be labeled with: PLOTMARK, CMS-P1-PLOTTER, mounting type: snapped, for terminal block width: 5 mm, lettering field size: 5.1 x 5.2 mm, Number of individual labels: 10

# PTTB 2,5-PE/L - Protective conductor double-level terminal block

3210978

<https://www.phoenixcontact.com/de/produkte/3210978>

## ZBF 5 CUS - Zack Marker strip, flat

0825025

<https://www.phoenixcontact.com/de/produkte/0825025>



Zack Marker strip, flat, can be ordered: Strip, white, labeled according to customer specifications, mounting type: snap into flat marker groove, for terminal block width: 5 mm, lettering field size: 5.15 x 5.15 mm, Number of individual labels: 10

---

## ZBF 5,LGS:FORTL.ZAHLEN - Zack Marker strip, flat

0808671

<https://www.phoenixcontact.com/de/produkte/0808671>



Zack Marker strip, flat, Strip, white, labeled, printed horizontally: consecutive numbers 1 ... 10, 11 ... 20, etc. up to 491 ... 500, mounting type: snapped, for terminal block width: 5 mm, lettering field size: 5.15 x 5.15 mm, Number of individual labels: 10

# PTTB 2,5-PE/L - Protective conductor double-level terminal block

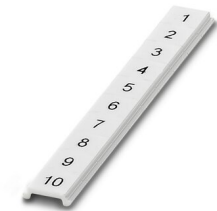
3210978

<https://www.phoenixcontact.com/de/produkte/3210978>

## ZBF 5,QR:FORTL.ZAHLEN - Zack Marker strip, flat

0808697

<https://www.phoenixcontact.com/de/produkte/0808697>



Zack Marker strip, flat, Strip, white, labeled, Printed vertically: consecutive numbers 1 ... 10, 11 ... 20, etc. up to 91 ... 100, mounting type: snapped, for terminal block width: 5 mm, lettering field size: 5.15 x 5.15 mm, Number of individual labels: 10

---

## ZBF 5,LGS:GERADE ZAHLEN - Zack Marker strip, flat

0810821

<https://www.phoenixcontact.com/de/produkte/0810821>



Zack Marker strip, flat, Strip, white, labeled, printed horizontally: consecutive even numbers 2 ... 20, 22 ... 40, etc. up to 82 ... 100, mounting type: snapped, for terminal block width: 5 mm, lettering field size: 5.15 x 5.15 mm, Number of individual labels: 10

# PTTB 2,5-PE/L - Protective conductor double-level terminal block



3210978

<https://www.phoenixcontact.com/de/produkte/3210978>

## ZBF 5,LGS:UNGERADE ZAHLEN - Zack Marker strip, flat

0810863

<https://www.phoenixcontact.com/de/produkte/0810863>



Zack Marker strip, flat, Strip, white, labeled, printed horizontally: Odd numbers 1 - 19, 21 - 39, etc. up to 81 - 99, mounting type: snapped, for terminal block width: 5 mm, lettering field size: 5.15 x 5.15 mm, Number of individual labels: 10

---

## UC-TMF 5 - Marker for terminal blocks

0818153

<https://www.phoenixcontact.com/de/produkte/0818153>



Marker for terminal blocks, Sheet, white, unlabeled, can be labeled with: BLUEMARK ID COLOR, BLUEMARK ID, BLUEMARK CLED, PLOTMARK, CMS-P1-PLOTTER, mounting type: snapped, for terminal block width: 5.2 mm, lettering field size: 4.6 x 5.1 mm, Number of individual labels: 96

# PTTB 2,5-PE/L - Protective conductor double-level terminal block

3210978

<https://www.phoenixcontact.com/de/produkte/3210978>

## UC-TMF 5 CUS - Marker for terminal blocks

0824638

<https://www.phoenixcontact.com/de/produkte/0824638>



Marker for terminal blocks, can be ordered: by sheet, white, labeled according to customer specifications, mounting type: snap into flat marker groove, for terminal block width: 5.2 mm, lettering field size: 4.6 x 5.1 mm, Number of individual labels: 96

---

## UCT-TMF 5 - Marker for terminal blocks

0828744

<https://www.phoenixcontact.com/de/produkte/0828744>



Marker for terminal blocks, Sheet, white, unlabeled, can be labeled with: TOPMARK NEO, TOPMARK LASER, BLUEMARK ID COLOR, BLUEMARK ID, BLUEMARK CLED, THERMOMARK PRIME, THERMOMARK CARD 2.0, THERMOMARK CARD, mounting type: snapped, for terminal block width: 5.2 mm, lettering field size: 4.4 x 4.7 mm, Number of individual labels: 72

# PTTB 2,5-PE/L - Protective conductor double-level terminal block

3210978

<https://www.phoenixcontact.com/de/produkte/3210978>

## UCT-TMF 5 CUS - Marker for terminal blocks

0829658

<https://www.phoenixcontact.com/de/produkte/0829658>



Marker for terminal blocks, can be ordered: by sheet, white, labeled according to customer specifications, mounting type: snap into flat marker groove, for terminal block width: 5.2 mm, lettering field size: 4.4 x 4.7 mm, Number of individual labels: 72

---

## MPS-MT - Test plugs

0201744

<https://www.phoenixcontact.com/de/produkte/0201744>



Test plugs, with solder connection up to 1 mm<sup>2</sup> conductor cross section, number of positions: 1, color: gray

# PTTB 2,5-PE/L - Protective conductor double-level terminal block

3210978

<https://www.phoenixcontact.com/de/produkte/3210978>

## MPS-IH WH - Insulating sleeve

0201663

<https://www.phoenixcontact.com/de/produkte/0201663>

Insulating sleeve, color: white



---

## MPS-IH RD - Insulating sleeve

0201676

<https://www.phoenixcontact.com/de/produkte/0201676>

Insulating sleeve, color: red





# PTTB 2,5-PE/L - Protective conductor double-level terminal block

3210978

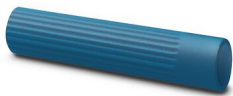
<https://www.phoenixcontact.com/de/produkte/3210978>

## MPS-IH BU - Insulating sleeve

0201689

<https://www.phoenixcontact.com/de/produkte/0201689>

Insulating sleeve, color: blue



## MPS-IH YE - Insulating sleeve

0201692

<https://www.phoenixcontact.com/de/produkte/0201692>

Insulating sleeve, color: yellow



# PTTB 2,5-PE/L - Protective conductor double-level terminal block

3210978

<https://www.phoenixcontact.com/de/produkte/3210978>

## MPS-IH GN - Insulating sleeve

0201702

<https://www.phoenixcontact.com/de/produkte/0201702>

Insulating sleeve, color: green



---

## MPS-IH GY - Insulating sleeve

0201728

<https://www.phoenixcontact.com/de/produkte/0201728>

Insulating sleeve, color: gray



# PTTB 2,5-PE/L - Protective conductor double-level terminal block

3210978

<https://www.phoenixcontact.com/de/produkte/3210978>

## MPS-IH BK - Insulating sleeve

0201731

<https://www.phoenixcontact.com/de/produkte/0201731>

Insulating sleeve, color: black



---

## ISH 2,5/0,2 - Insulating sleeve

3002843

<https://www.phoenixcontact.com/de/produkte/3002843>

Insulating sleeve, color: white



# PTTB 2,5-PE/L - Protective conductor double-level terminal block

3210978

<https://www.phoenixcontact.com/de/produkte/3210978>

## ISH 2,5/0,5 - Insulating sleeve

3002856

<https://www.phoenixcontact.com/de/produkte/3002856>



Insulating sleeve, color: gray

---

## ISH 2,5/1,0 - Insulating sleeve

3002869

<https://www.phoenixcontact.com/de/produkte/3002869>



Insulating sleeve, color: black

# PTTB 2,5-PE/L - Protective conductor double-level terminal block

3210978

<https://www.phoenixcontact.com/de/produkte/3210978>

## PAI-4-FIX-5/6 BU - Test adapter

3035975

<https://www.phoenixcontact.com/de/produkte/3035975>



4 mm test adapter, for terminal blocks with 5.2 mm and 6.2 mm pitch

---

## PAI-4-FIX-5/6 OG - Test adapter

3035974

<https://www.phoenixcontact.com/de/produkte/3035974>



4 mm test adapter, for terminal blocks with 5.2 mm and 6.2 mm pitch

# PTTB 2,5-PE/L - Protective conductor double-level terminal block

3210978

<https://www.phoenixcontact.com/de/produkte/3210978>

## PAI-4-FIX-5/6 YE - Test adapter

3035977

<https://www.phoenixcontact.com/de/produkte/3035977>



4 mm test adapter, for terminal blocks with 5.2 mm and 6.2 mm pitch

---

## PAI-4-FIX-5/6 RD - Test adapter

3035976

<https://www.phoenixcontact.com/de/produkte/3035976>



4 mm test adapter, for terminal blocks with 5.2 mm and 6.2 mm pitch

# PTTB 2,5-PE/L - Protective conductor double-level terminal block

3210978

<https://www.phoenixcontact.com/de/produkte/3210978>

## PAI-4-FIX-5/6 GN - Test adapter

3035978

<https://www.phoenixcontact.com/de/produkte/3035978>



4 mm test adapter, for terminal blocks with 5.2 mm and 6.2 mm pitch

---

## PAI-4-FIX-5/6 BK - Test adapter

3035980

<https://www.phoenixcontact.com/de/produkte/3035980>



4 mm test adapter, for terminal blocks with 5.2 mm and 6.2 mm pitch

# PTTB 2,5-PE/L - Protective conductor double-level terminal block

3210978

<https://www.phoenixcontact.com/de/produkte/3210978>

## PAI-4-FIX-5/6 GY - Test adapter

3035982

<https://www.phoenixcontact.com/de/produkte/3035982>



4 mm test adapter, for terminal blocks with 5.2 mm and 6.2 mm pitch

---

## PAI-4-FIX-5/6 VT - Test adapter

3035979

<https://www.phoenixcontact.com/de/produkte/3035979>



4 mm test adapter, for terminal blocks with 5.2 mm and 6.2 mm pitch



# PTTB 2,5-PE/L - Protective conductor double-level terminal block

3210978

<https://www.phoenixcontact.com/de/produkte/3210978>

## PAI-4-FIX-5/6 BN - Test adapter

3035981

<https://www.phoenixcontact.com/de/produkte/3035981>



4 mm test adapter, for terminal blocks with 5.2 mm and 6.2 mm pitch

---

## PAI-4-FIX-5/6 WH - Test adapter

3035983

<https://www.phoenixcontact.com/de/produkte/3035983>



4 mm test adapter, for terminal blocks with 5.2 mm and 6.2 mm pitch

# PTTB 2,5-PE/L - Protective conductor double-level terminal block

3210978

<https://www.phoenixcontact.com/de/produkte/3210978>

## PS-5 - Test plugs

3030983

<https://www.phoenixcontact.com/de/produkte/3030983>



Test plugs, Modular test plug, number of positions: 1, color: red

---

## DP PS-5 - Spacer plate

3036725

<https://www.phoenixcontact.com/de/produkte/3036725>



Spacer plate, length: 22.4 mm, width: 5.2 mm, height: 29 mm, number of positions: 1, color: red

# PTTB 2,5-PE/L - Protective conductor double-level terminal block



3210978

<https://www.phoenixcontact.com/de/produkte/3210978>

## PS-5/2,3MM RD - Test plugs

3038723

<https://www.phoenixcontact.com/de/produkte/3038723>

Test plugs, number of positions: 1, color: red

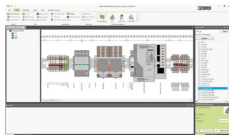


---

## PROJECT COMPLETE - Software

1050453

<https://www.phoenixcontact.com/de/produkte/1050453>



Intuitive planning and marking software for configuring terminal strips and for professional marking of marking materials for terminal blocks, conductors, cables, devices, and systems. The software is available for download

# PTTB 2,5-PE/L - Protective conductor double-level terminal block

3210978

<https://www.phoenixcontact.com/de/produkte/3210978>

## CLIPFIX 35 - End clamp

3022218

<https://www.phoenixcontact.com/de/produkte/3022218>



Quick mounting end clamp for NS 35/7,5 DIN rail or NS 35/15 DIN rail, with marking option, width: 9.5 mm, color: gray

---

## CLIPFIX 35-5 - End clamp

3022276

<https://www.phoenixcontact.com/de/produkte/3022276>



Quick mounting end clamp for NS 35/7,5 DIN rail or NS 35/15 DIN rail, with marking option, with parking option for FBS...5, FBS...6, KSS 5, KSS 6, width: 5.15 mm, color: gray

# PTTB 2,5-PE/L - Protective conductor double-level terminal block

3210978

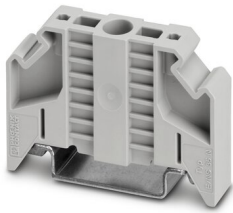
<https://www.phoenixcontact.com/de/produkte/3210978>

## E/NS 35 N - End clamp

0800886

<https://www.phoenixcontact.com/de/produkte/0800886>

End clamp, width: 9.5 mm, color: gray



---

## CRIMPFOX CENTRUS 6S - Crimping pliers

1213144

<https://www.phoenixcontact.com/de/produkte/1213144>



Crimping pliers, for uninsulated and insulated ferrules, DIN 46228 Part 1 and 4, from 0.14 mm<sup>2</sup> ... 6 mm<sup>2</sup>, also for TWIN ferrules up to 2 x 4 mm<sup>2</sup>, automatic cross section adjustment, lateral insertion, equipped with fall protection

# PTTB 2,5-PE/L - Protective conductor double-level terminal block

3210978

<https://www.phoenixcontact.com/de/produkte/3210978>

## CRIMPFOX CENTRUS 10S - Crimping pliers

1213154

<https://www.phoenixcontact.com/de/produkte/1213154>



Crimping pliers, for uninsulated and insulated ferrules, DIN 46228 Part 1 and 4, from 0.14 mm<sup>2</sup> ... 10 mm<sup>2</sup>, also for TWIN ferrules up to 2 x 4 mm<sup>2</sup>, automatic cross section adjustment, lateral insertion, equipped with fall protection

---

## CRIMPFOX CENTRUS 6H - Crimping pliers

1213146

<https://www.phoenixcontact.com/de/produkte/1213146>



Crimping pliers, for uninsulated and insulated ferrules, DIN 46228 Part 1 and 4, from 0.14 mm<sup>2</sup> ... 6 mm<sup>2</sup>, also for TWIN ferrules up to 2 x 4 mm<sup>2</sup>, automatic cross section adjustment, lateral insertion, equipped with fall protection

# PTTB 2,5-PE/L - Protective conductor double-level terminal block

3210978

<https://www.phoenixcontact.com/de/produkte/3210978>

## CRIMPFOX CENTRUS 10H - Crimping pliers

1213156

<https://www.phoenixcontact.com/de/produkte/1213156>



Crimping pliers, for uninsulated and insulated ferrules, DIN 46228 Part 1 and 4, from 0.14 mm<sup>2</sup> ... 10 mm<sup>2</sup>, also for TWIN ferrules up to 2 x 4 mm<sup>2</sup>, automatic cross section adjustment, lateral insertion, equipped with fall protection

---

## CRIMPFOX 10S - Crimping pliers

1212045

<https://www.phoenixcontact.com/de/produkte/1212045>



Crimping pliers, for ferrules without insulating collar according to DIN 46228 Part 1 and ferrules with insulating collar according to DIN 46228 Part 4, 0.14 mm<sup>2</sup> ... 10 mm<sup>2</sup>, unlockable pressure lock, lateral entry

# PTTB 2,5-PE/L - Protective conductor double-level terminal block

3210978

<https://www.phoenixcontact.com/de/produkte/3210978>

## CRIMPFOX 6H - Crimping pliers

1212046

<https://www.phoenixcontact.com/de/produkte/1212046>



Crimping pliers, for ferrules without insulating collar according to DIN 46228 Part 1 and ferrules with insulating collar according to DIN 46228 Part 4, 0.14 mm<sup>2</sup> ... 6 mm<sup>2</sup>, unlockable pressure lock, lateral entry

---

## CRIMPFOX 2,5-M - Crimping pliers

1212719

<https://www.phoenixcontact.com/de/produkte/1212719>



Crimping pliers, for ferrules without insulating collar according to DIN 46228 Part 1 and ferrules with insulating collar according to DIN 46228 Part 4, 0.25 mm<sup>2</sup> ... 2.5 mm<sup>2</sup>, lateral entry, trapezoidal crimp



# PTTB 2,5-PE/L - Protective conductor double-level terminal block

3210978

<https://www.phoenixcontact.com/de/produkte/3210978>

## CRIMPFOX 6-M - Crimping pliers

1212720

<https://www.phoenixcontact.com/de/produkte/1212720>



Crimping pliers, for ferrules without insulating collar according to DIN 46228 Part 1 and ferrules with insulating collar according to DIN 46228 Part 4, 0.25 mm<sup>2</sup> ... 6.0 mm<sup>2</sup>, lateral entry, trapezoidal crimp

---

## CRIMPFOX 6 - Crimping pliers

1212034

<https://www.phoenixcontact.com/de/produkte/1212034>



Crimping pliers, for ferrules without insulating collar according to DIN 46228 Part 1 and ferrules with insulating collar according to DIN 46228 Part 4, 0.25 mm<sup>2</sup> ... 6.0 mm<sup>2</sup>, lateral entry, trapezoidal crimp

# PTTB 2,5-PE/L - Protective conductor double-level terminal block

3210978

<https://www.phoenixcontact.com/de/produkte/3210978>

## CRIMPFOX 6T - Crimping pliers

1212037

<https://www.phoenixcontact.com/de/produkte/1212037>



Crimping pliers, for ferrules without insulating collar according to DIN 46228 Part 1 and ferrules with insulating collar according to DIN 46228 Part 4, 0.25 mm<sup>2</sup> ... 6 mm<sup>2</sup>, lateral entry, trapezoidal crimp

---

## CRIMPFOX 6T-F - Crimping pliers

1212038

<https://www.phoenixcontact.com/de/produkte/1212038>



Crimping pliers, for ferrules without insulating collar according to DIN 46228 Part 1 and ferrules with insulating collar according to DIN 46228 Part 4, 0.25 mm<sup>2</sup> ... 6 mm<sup>2</sup>, front entry, trapezoidal crimp

# PTTB 2,5-PE/L - Protective conductor double-level terminal block



3210978

<https://www.phoenixcontact.com/de/produkte/3210978>

## CRIMPFOX 6S-F - Crimping pliers

1212043

<https://www.phoenixcontact.com/de/produkte/1212043>



Crimping pliers, for ferrules without insulating collar according to DIN 46228 Part 1 and ferrules with insulating collar according to DIN 46228 Part 4, 0.5 mm<sup>2</sup> ... 6 mm<sup>2</sup>, front entry, square crimp

## CRIMPFOX-M - Crimping pliers

1212072

<https://www.phoenixcontact.com/de/produkte/1212072>



Basic pliers, for accommodating dies for a wide range of type of contacts

Phoenix Contact 2023 © - all rights reserved

<https://www.phoenixcontact.com>

PHOENIX CONTACT Deutschland GmbH

Flachsmarktstraße 8

D-32825 Blomberg

+49 52 35/3-1 20 00

[info@phoenixcontact.de](mailto:info@phoenixcontact.de)