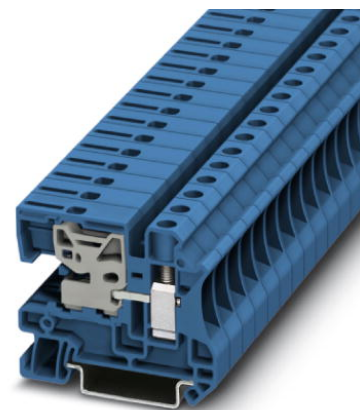


## UTN 10


Order No.: 3245040



<http://eshop.phoenixcontact.de/phoenix/treeViewClick.do?UID=3245040>

N disconnect terminal block, Screw connection, Cross section: 0.5 mm<sup>2</sup> - 16 mm<sup>2</sup>, AWG: 20 - 6, Width: 10.2 mm, Color: blue, Mounting type: NS 35/7.5, NS 35/15

### Commercial data

|                          |   |
|--------------------------|---|
| GTIN (EAN)               |  |
| sales group              | A821  |
| Pack                     | 50 pcs.   |
| Customs tariff           | 85369010  |
| Catalog page information | Page 70 (CL-2009)   |

<http://www.download.phoenixcontact.com>  
Please note that the data given here has been taken from the online catalog. For comprehensive information and data, please refer to the user documentation. The General Terms and Conditions of Use apply to Internet downloads.

### Technical data

#### General

|                                    |      |
|------------------------------------|------|
| Number of levels                   | 1    |
| Color                              | blue |
| Insulating material                | PA   |
| Inflammability class acc. to UL 94 | V0   |

#### Dimensions

|                  |         |
|------------------|---------|
| Width            | 10.2 mm |
| Length           | 55 mm   |
| Height NS 35/7.5 | 47.5 mm |

**Technical data**

|                                  |               |
|----------------------------------|---------------|
| Maximum load current             | 57 A          |
| Rated surge voltage              | 6 kV          |
| Pollution degree                 | 3             |
| Surge voltage category           | III           |
| Insulating material group        | I             |
| Connection in acc. with standard | IEC 60947-7-1 |
| Nominal current $I_N$            | 57 A          |
| Nominal voltage $U_N$            | 400 V         |
| Open side panel                  | ja            |

**Connection data**

|   |                     |
|---|---------------------|
| Conductor cross section solid min.  | 0.5 mm <sup>2</sup> |
| Conductor cross section solid max.  | 16 mm <sup>2</sup>  |
| Conductor cross section stranded min.   | 0.5 mm <sup>2</sup> |
| Conductor cross section stranded max.   | 16 mm <sup>2</sup>  |
| Conductor cross section AWG/kcmil min.  | 20                  |
| Conductor cross section AWG/kcmil max   | 6                   |
| Conductor cross section stranded, with ferrule without plastic sleeve min.              | 0.5 mm <sup>2</sup> |
| Conductor cross section stranded, with ferrule without plastic sleeve max.              | 10 mm <sup>2</sup>  |
| Conductor cross section stranded, with ferrule with plastic sleeve min.                 | 0.5 mm <sup>2</sup> |
| Conductor cross section stranded, with ferrule with plastic sleeve max.                 | 10 mm <sup>2</sup>  |
| 2 conductors with same cross section, solid min.  | 0.5 mm <sup>2</sup> |
| 2 conductors with same cross section, solid max.  | 4 mm <sup>2</sup>   |
| 2 conductors with same cross section, stranded min.                                     | 0.5 mm <sup>2</sup> |
| 2 conductors with same cross section, stranded max.                                     | 4 mm <sup>2</sup>   |
| 2 conductors with same cross section, stranded, TWIN ferrules with plastic sleeve, min. | 0.5 mm <sup>2</sup> |
| 2 conductors with same cross section, stranded, TWIN ferrules with plastic sleeve, max. | 6 mm <sup>2</sup>   |
| 2 conductors with same cross section, stranded, ferrules without plastic sleeve, min.   | 0.5 mm <sup>2</sup> |
| 2 conductors with same cross section, stranded, ferrules without plastic sleeve, max.   | 2.5 mm <sup>2</sup> |

|                        |                  |
|------------------------|------------------|
| Type of connection     | Screw connection |
| Stripping length       | 10 mm            |
| Screw thread           | M 4              |
| Tightening torque, min | 1.5 Nm           |
| Tightening torque max  | 1.8 Nm           |

### Accessories

| Item            | Designation                 | Description  |
|-----------------|-----------------------------|--|
| <b>Assembly</b> |                             |  |
| 1201141         | AB/NS                       | Support, for insulated mounting of DIN rails in insulated systems, plastic, 21 mm high   |
| 3022218         | CLIPFIX 35                  | Snap-on end bracket, for 35 mm NS 35/7.5 or NS 35/15 DIN rail, can be fitted with Zack strip ZB 8 and ZB 8/27, terminal strip marker KLM 2 and KLM, width: 9.5 mm, color: gray   |
| 3022276         | CLIPFIX 35-5                | Snap-on end bracket, for NS 35/7.5 or NS 35/15 DIN rail, can be fitted with Zack strip ZB 5 and ZBF 5, terminal strip marker KLM 2 and KLM, parking facility for FBS...5, FBS...6, KSS 5, KSS 6, width: 5,15 mm, color: gray |
| 1201442         | E/UK                        | End clamp, for assembly on NS 32 or NS 35/7.5 DIN rail   |
| 0401010         | EK 116                      | Power terminal block, Load current : 76 A, Cross section: 0.5 mm <sup>2</sup> - 16 mm <sup>2</sup> , Width: 8 mm, Color: aluminum  |
| 0401023         | EK 135                      | Power terminal block, Load current : 125 A, Cross section: 0.75 mm <sup>2</sup> - 35 mm <sup>2</sup> , Width: 12 mm, Color: aluminum   |
| 0402174         | NLS-CU 3/10 SN 1000MM       | PEN conductor busbar, 3mm x 10 mm, length: 1000 mm   |
| 0402174         | NLS-CU 3/10 SN 1000MM       | PEN conductor busbar, 3mm x 10 mm, length: 1000 mm   |
| 0801762         | NS 35/ 7,5 CU UNPERF 2000MM | DIN rail, material: Copper, unperforated, height 7.5 mm, width 35 mm, length: 2 m  |
| 1207640         | NS 35/ 7,5 PERF 755MM       | NS 35 DIN rail, height 7.5 mm, length 755 mm   |
| 1207653         | NS 35/ 7,5 PERF 955MM       | NS35 DIN rail, height 7.5 mm, length 955 mm  |
| 1207666         | NS 35/ 7,5 PERF 1155MM      | NS 35 DIN rail, height 7.5 mm, length 1155 mm  |
| 0801733         | NS 35/ 7,5 PERF 2000MM      | DIN rail, material: Steel, galvanized and passivated with a thick layer, perforated, height 7.5 mm, width 35 mm, length: 2 m   |
| 0801681         | NS 35/ 7,5 UNPERF 2000MM    | DIN rail, material: Steel, unperforated, height 7.5 mm, width 35 mm, length: 2 m   |
| 1201756         | NS 35/15 AL UNPERF 2000MM   | DIN rail, deep-drawn, high profile, unperforated, 1.5 mm thick, material: Aluminum, height 15 mm, width 35 mm, length 2 m  |
| 1201895         | NS 35/15 CU UNPERF 2000MM   | DIN rail, material: Copper, unperforated, 1.5 mm thick, height 15 mm, width 35 mm, length: 2 m   |
| 1207679         | NS 35/15 PERF 755MM         | NS 35 DIN rail, perforated, height 15 mm, length 755 mm  |
| 1207682         | NS 35/15 PERF 955MM         | NS 35 DIN rail, perforated, height 15 mm, length 955 mm  |

|         |                            |   |
|---------|----------------------------|---|
| 1207695 | NS 35/15 PERF 1155MM       | NS 35 DIN rail, perforated, height 15 mm, length 1155 mm                                      |
| 1201730 | NS 35/15 PERF 2000MM       | DIN rail, material: Steel, perforated, height 15 mm, width 35 mm, length: 2 m                 |
| 1201714 | NS 35/15 UNPERF 2000MM     | DIN rail, material: Steel, unperforated, height 15 mm, width 35 mm, length: 2 m               |
| 1201798 | NS 35/15-2,3 UNPERF 2000MM | DIN rail, material: Steel, unperforated, 2.3 mm thick, height 15 mm, width 35 mm, length: 2 m |
| 3032428 | UAB                        | Support, Width: 2 mm, Color: blue   |

**Bridges**

|         |          |  |
|---------|----------|--|
| 3005947 | FBS 2-10 | Plug-in bridge, Number of positions: 2, Color: red |
|---------|----------|--|

**Plug/Adapter**

|         |             |   |
|---------|-------------|---|
| 3047112 | AGK 4-UT 10 | Pick-off terminal block, Type of connection: Special and hybrid connection, Width: 8.2 mm, Height: 34.7 mm, Color: gray |
| 0201731 | MPS-IH BK   | Insulating sleeve, Color: black   |
| 0201689 | MPS-IH BU   | Insulating sleeve, Color: blue  |
| 0201702 | MPS-IH GN   | Insulating sleeve, Color: green   |
| 0201728 | MPS-IH GY   | Insulating sleeve, Color: gray  |
| 0201676 | MPS-IH RD   | Insulating sleeve, Color: red   |
| 0201715 | MPS-IH VT   | Insulating sleeve, Color: violet  |
| 0201663 | MPS-IH WH   | Insulating sleeve, Color: white   |
| 0201692 | MPS-IH YE   | Insulating sleeve, Color: yellow  |
| 0201744 | MPS-MT      | Test plugs  |
| 3030925 | PAI-4       | Test adapter, Color: gray   |

**Diagrams/Drawings**

Circuit diagram



UTN 10 Order No.: 3245040

<http://eshop.phoenixcontact.de/phoenix/treeViewClick.do?UID=3245040>

---

**Address**

PHOENIX CONTACT Deutschland GmbH  
Flachmarktstr. 8  
32825 Blomberg, Germany  
Phone +49 5235 3 12000  
Fax +49 5235 3 41200  
<http://www.phoenixcontact.de>



© 2011 Phoenix Contact  
Technical modifications reserved;