

Surge protection device - DT-TELE-SHDSL - 2801593


Please be informed that the data shown in this PDF Document is generated from our Online Catalog. Please find the complete data in the user's documentation. Our General Terms of Use for Downloads are valid (<http://phoenixcontact.com/download>)



Attachment plug with surge protection for two SHDSL telecommunications interfaces (ports). Connection: RJ45 (RJ12/RJ11) and plug-in screw terminal block (COMBICON). Alternatively, can be snapped onto a DIN rail.



Key Commercial Data

Packing unit	1 STK
GTIN	 4 046356 868457
GTIN	4046356868457
Weight per Piece (excluding packing)	325.200 g
Custom tariff number	85363010
Country of origin	Germany

Technical data

Dimensions

Height	103 mm
Width	25 mm
Depth	63 mm

Ambient conditions

Ambient temperature (operation)	-40 °C ... 85 °C
Ambient temperature (storage/transport)	-40 °C ... 85 °C
Degree of protection	IP20

General

Housing material	Zinc die-cast
Color	silver/black
Standards for clearances and creepage distances	IEC 60664-1
	VDE 0110-1
Mounting type	Connection-specific attachment plug and DIN rail, 35 mm
Design	Attachment plug for DIN rail mounting

Surge protection device - DT-TELE-SHDSL - 2801593

Technical data

General

Number of positions	4
Direction of action	Line-Line & Line-Ground/Shield

Protective circuit

IEC test classification	B2
	C1
	C2
	C3
	D1
VDE requirement class	B2
	C1
	C2
	C3
	D1
Maximum continuous voltage U_C	185 V DC
	130 V AC
Rated current	≤ 380 mA (25 °C)
Operating effective current I_C at U_C	≤ 6 μ A
Residual current I_{PE}	≤ 4 μ A
Nominal discharge current I_n (8/20) μ s (Core-Core)	≤ 5 kA
Nominal discharge current I_n (8/20) μ s (core-earth)	≤ 5 kA
Pulse discharge current I_{imp} (10/350) μ s	2.5 kA (Number of pulses category D1)
Total discharge current I_{total} (8/20) μ s	10 kA
Nominal pulse current I_{an} (10/1000) μ s (Core-Core)	100 A
Nominal pulse current I_{an} (10/1000) μ s (Core-Earth)	100 A
Nominal pulse current I_{an} (10/700) μ s (Core-Core)	150 A
Nominal pulse current I_{an} (10/700) μ s (Core-Earth)	150 A
Voltage protection level U_p (core-core)	250 V (B2 - 100 A)
	≤ 250 V (C1 - 500 A)
	≤ 410 V (C2 - 5 kA)
	≤ 250 V (C3 - 100 A)
Voltage protection level U_p (core-ground)	≤ 580 V (B2 - 100 A)
	≤ 580 V (C1 - 500 A)
	≤ 790 V (C2 - 5 kA)
	≤ 300 V (C3 - 100 A)
Response time t_A (core-core)	≤ 100 ns
Response time t_A (core-earth)	≤ 100 ns
	typ. 0.3 dB ($\leq 2,8$ MHz / 100 Ω)
	typ. 3 dB (≤ 25 MHz / 100 Ω)
Cut-off frequency f_g (3 dB), sym. in 100 Ohm system	25 MHz
Capacity (core-core)	55 pF

Surge protection device - DT-TELE-SHDSL - 2801593

Technical data

Protective circuit

Capacity (core-earth)	7 pF
Resistance in series	3.3 Ω 20 %
Surge protection fault message	None
Impulse durability (conductor-conductor)	C1 - 1 kV/500 A
	C2 - 10 kV/5 kA
	B2 - 4 kV/100 A
Impulse durability (conductor-ground)	B2 - 4 kV/100 A
	C1 - 1 kV/500 A
	C2 - 10 kV/5 kA
	D1 - 1 kA

Connection data

Connection method	RJ45/COMBICON
Connection method IN	RJ45 socket
	MC 1,5/4
Connection method OUT	RJ45 socket
	MC 1,5/4
Connection technology	Screw connection
Screw thread	M2
Tightening torque	0.22 Nm
Stripping length	7 mm
Conductor cross section flexible	0.14 mm ² ... 1.5 mm ²
Conductor cross section solid	0.14 mm ² ... 1.5 mm ²
Conductor cross section AWG	28 ... 16

Connection, equipotential bonding

Connection method	Cable connection/DIN rail
-------------------	---------------------------

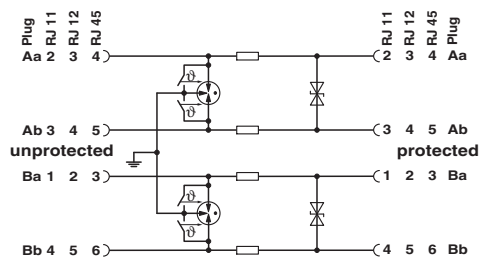
Standards and Regulations

Standards/regulations	IEC 61643-21
Standards/specifications	IEC 61643-21 2002

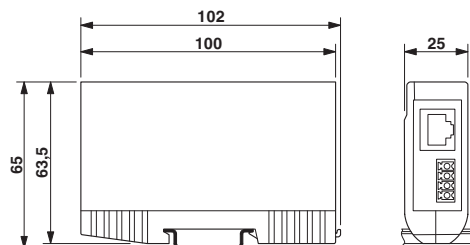
Drawings

Surge protection device - DT-TELE-SHDSL - 2801593

Circuit diagram



Dimensional drawing



Classifications

eCl@ss

eCl@ss 4.0	27140201
eCl@ss 4.1	27130801
eCl@ss 5.0	27130801
eCl@ss 5.1	27130801
eCl@ss 6.0	27130806
eCl@ss 7.0	27130807
eCl@ss 8.0	27130807
eCl@ss 9.0	27130807

ETIM

ETIM 4.0	EC000943
ETIM 5.0	EC000943
ETIM 6.0	EC000943

UNSPSC

UNSPSC 6.01	30212010
UNSPSC 7.0901	39121610
UNSPSC 11	39121610
UNSPSC 12.01	39121610
UNSPSC 13.2	39121620

Approvals

Approvals

Approvals

EAC

Surge protection device - DT-TELE-SHDSL - 2801593

Approvals

Ex Approvals

Approval details

EAC



RU C-
DE.A*30.B01561

Accessories

Accessories

Modem

Modem - PSI-MODEM-SHDSL/ETH - 2313643



First generation: Unmanaged Ethernet extender for point-to-point connections, line and ring structures, data rates up to 30 Mbps, distances of up to 20 km on in-house copper cables, diagnostics via USB and LEDs, 2 SHDSL ports, 1 LAN port

Modem - PSI-MODEM-SHDSL/PB - 2313656



Industrial PROFIBUS extender, for point-to-point connections, linear structures, and mixed operation with repeaters and fiber optic converters. Distances of up to 20 km, PROFIBUS data rates of up to 1.5 Mbps via simple copper wires, such as in-house phone lines.

Modem - PSI-MODEM-SHDSL/SERIAL - 2313669



Industrial SHDSL extender for serial RS-232/422/485 interfaces, point-to-point and line structures, serial data transmission up to 2000 kbps on in-house cables, diagnostics via USB and LEDs, two configurable alarm outputs