

FBS 20-3,5 BU - Plug-in bridge

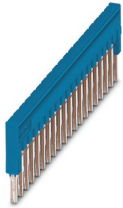
3213138

<https://www.phoenixcontact.com/de/produkte/3213138>



Please be informed that the data shown in this PDF document is generated from our online catalog. Please find the complete data in the user documentation. Our general terms of use for downloads are valid.

Plug-in bridge, pitch: 3.5 mm, number of positions: 20, color: blue



Your advantages

- The 2- to 50-pos. jumpers can bridge up to 50 terminal blocks in the two bridge shafts of the CLIPLINE complete system in one step

Commercial data

Item number	3213138
Packing unit	50 pc
Minimum order quantity	50 pc
Sales key	A1 - Reihenklennen
Product key	BE2Z2X
Catalog page	Page 403 (C-1-2019)
GTIN	4046356599313
Weight per piece (including packing)	6,972 g
Weight per piece (excluding packing)	6,84 g
Customs tariff number	85366990
Country of origin	DE

Technical data

Product properties

Product type	Jumper
Number of positions	20
Pitch	3.5 mm

Electrical properties

Maximum load current	17.5 A (The current values for the jumpers can deviate when used in different modular terminal blocks. The precise values can be found in the accessories data for the respective modular terminal blocks.)
----------------------	---

Connection data

Maximum load current	17.5 A (The current values for the jumpers can deviate when used in different modular terminal blocks. The precise values can be found in the accessories data for the respective modular terminal blocks.)
----------------------	---

Dimensions

Pitch	3.5 mm
-------	--------

Material specifications

Color	blue
Material	Copper
Flammability rating according to UL 94	V0
Insulating material	PA

Environmental and real-life conditions

Ambient conditions

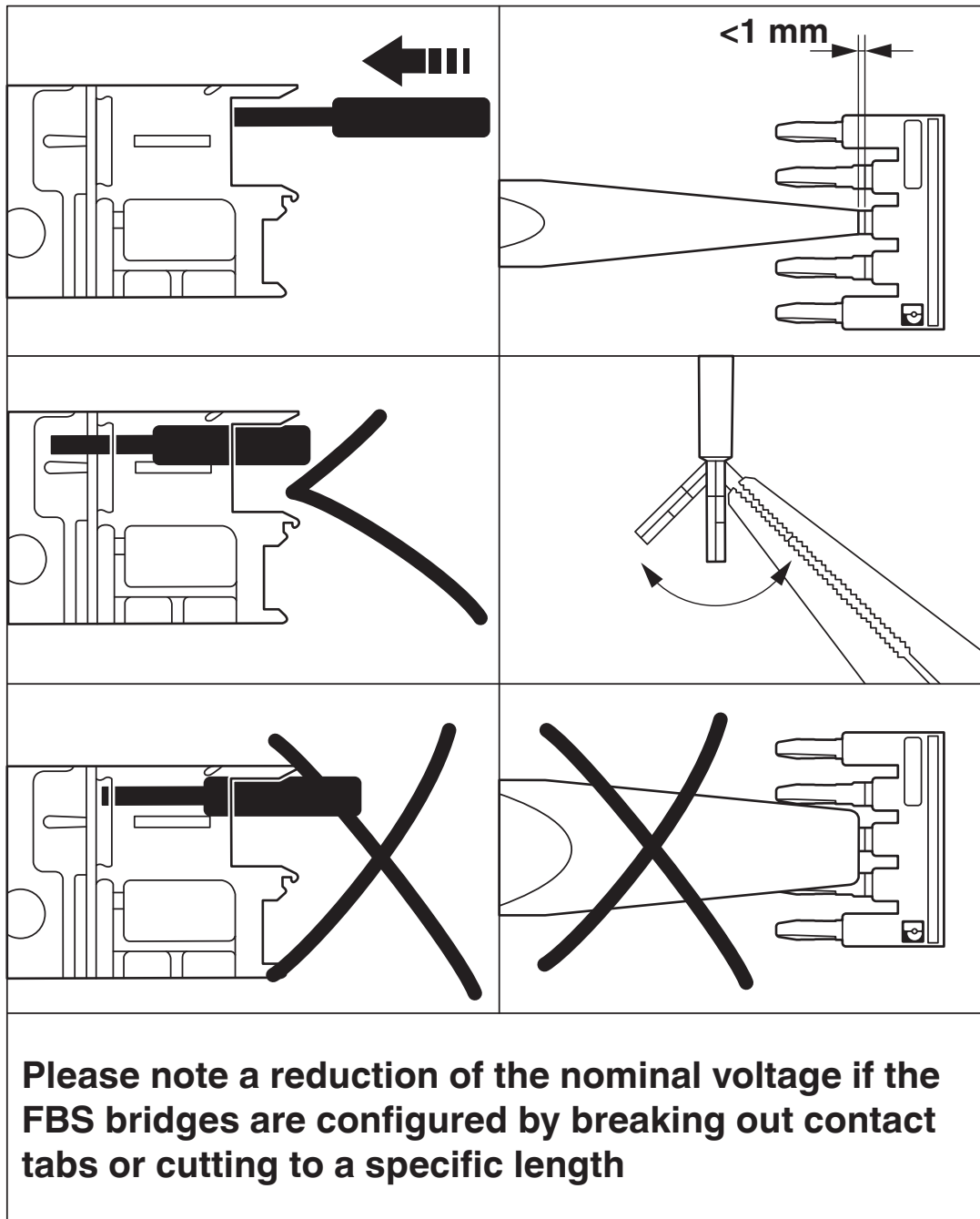
Ambient temperature (operation)	-60 °C ... 105 °C
Ambient temperature (storage/transport)	-25 °C ... 60 °C (for a short time, not exceeding 24 h, -60 °C to +70 °C)
Ambient temperature (assembly)	-5 °C ... 70 °C
Ambient temperature (actuation)	-5 °C ... 70 °C
Permissible humidity (storage/transport)	30 % ... 70 %

Mounting

Mounting type	Plug-in mounting
---------------	------------------

Drawings

Schematic diagram



FBS 20-3,5 BU - Plug-in bridge

3213138

<https://www.phoenixcontact.com/de/produkte/3213138>



Classifications

ECLASS

ECLASS-11.0	27141140
ECLASS-12.0	27141140
ECLASS-13.0	27250303

ETIM

ETIM 8.0	EC000489
----------	----------

UNSPSC

UNSPSC 21.0	39121400
-------------	----------

FBS 20-3,5 BU - Plug-in bridge

3213138

<https://www.phoenixcontact.com/de/produkte/3213138>



Environmental product compliance

China RoHS	Environmentally friendly use period: unlimited = EFUP-e
	No hazardous substances above threshold values

FBS 20-3,5 BU - Plug-in bridge

3213138

<https://www.phoenixcontact.com/de/produkte/3213138>



Accessories

CUTFOX-FBS - Front cutter

1212124

<https://www.phoenixcontact.com/de/produkte/1212124>



Cutting tool, for separating individual jumper bars from FBS ... plug-in bridges and EB ... insertion bridges

Phoenix Contact 2023 © - all rights reserved
<https://www.phoenixcontact.com>

PHOENIX CONTACT Deutschland GmbH
Flachsmarktstraße 8
D-32825 Blomberg
+49 52 35/3-1 20 00
info@phoenixcontact.de