

Industrial Ethernet Switch - FL SWITCH 1001T-4POE-GT



1026937

<https://www.phoenixcontact.com/de/produkte/1026937>

Please be informed that the data shown in this PDF document is generated from our Online Catalog. Please find the complete data in the user documentation. Our General Terms of Use for Downloads are valid.



Unmanaged PoE Switches 1000, 1 RJ45 port 10/100/1000 Mbps, 4 RJ45 ports 10/100/1000 Mbps

Your advantages

- POE status LED per port
- Wide-range power supply of 18 ... 57 V DC
- Wide -40° ... +75°C temperature range
- Autocrossing
- Auto negotiation
- Redundant power supply
- Automatic detection of IEEE 802.3at or 802.3af powered devices

Commercial Data

Item number	1026937
Packing unit	1 pc
Minimum order quantity	1 pc
Sales Key	M2 - Netzwerktechnik
Product Key	DNN115
Catalog Page	Page 303 (C-6-2019)
GTIN	4055626519692
Weight per Piece (including packing)	626,9 g
Weight per Piece (excluding packing)	623 g
Customs tariff number	85176200
Country of origin	TW

Industrial Ethernet Switch - FL SWITCH 1001T-4POE-GT



1026937

<https://www.phoenixcontact.com/de/produkte/1026937>

Technical Data

Dimensions

Width	30 mm
Height	149 mm
Depth	107.8 mm

Notes

Notes on operation	Mode A PoE
Utilization restriction	
EMC note	EMC: class A product, see manufacturer's declaration in the download area

Mounting

Mounting type	DIN rail mounting
---------------	-------------------

Interfaces

Ethernet

Connection method	RJ45
Note on the connection method	Auto negotiation and autocrossing
Transmission speed	10/100/1000 Mbps
Transmission physics	Ethernet RJ45
Transmission length	100 m (Between transmitter / receiver)
Signal LEDs	LNK/ACT, POE
No. of channels	1 (RJ45 port)

Ethernet (PoE)

Connection method	RJ45
Transmission speed	10/100/1000 Mbps
Transmission physics	Ethernet RJ45
Transmission length	100 m (Between transmitter / receiver)
Signal LEDs	LNK/ACT, POE
No. of channels	4 (RJ45 ports)

Product properties

Type	Stand-Alone
Product type	Switch
	Unmanaged PoE Switches 1000
MTTF	72.1 Years (MIL-HDBK-217F standard, temperature 25°C, operating cycle 100%)

Switch functions

Basic functions	Store-and-forward switch, 10/100/1000 Mbps, auto negotiation, redundant power supply, PoE according to IEEE 802.3at/802.3af, jumbo frames up to 10240 bytes, alarm contact
-----------------	--

Industrial Ethernet Switch - FL SWITCH 1001T-4POE-GT



1026937

<https://www.phoenixcontact.com/de/produkte/1026937>

Signal contact control voltage	48 V DC
Signal contact control current	0.5 A
Status and diagnostic indicators	LEDs: U _{S1} , U _{S2} (redundant voltage supply), Alarm (alarm contact), Link/Activity and PoE per Ethernet port
Additional functions	Autonegotiation

Security functions

Basic functions	Store-and-forward switch, 10/100/1000 Mbps, auto negotiation, redundant power supply, PoE according to IEEE 802.3at/802.3af, jumbo frames up to 10240 bytes, alarm contact
-----------------	--

Electrical properties

Local diagnostics	US1, US2 Supply voltage Green LED
	PoE PoE detection Orange LED
	LNK/ACT Link status/data transmission Green LED
	Alarm Power failure at US1 or US2/Link failure

Supply

Supply voltage (DC)	24 V DC
Supply voltage	48 V DC
Supply voltage range	18 V DC ... 57 V DC
Power supply connection	Via COMBICON, max. conductor cross section 2.5 mm ²
Inrush current	32.1 A (24 V DC for 3540 µs)
Residual ripple	3.6 V _{pp} (within the permitted voltage range)
Max. current consumption	6.93 A (Maximum, nominal load)
Typical current consumption	165 mA (at U _S = 24 V DC)

Function

Signal contact control voltage	48 V DC
Signal contact control current	0.5 A

Connection data

Connection technology

Connection name	Power supply
-----------------	--------------

Power supply

Connection method	COMBICON plug-in screw terminal block
Conductor cross section, rigid	0.2 mm ² ... 2.5 mm ²
Conductor cross section, flexible	0.2 mm ² ... 2.5 mm ²
Conductor cross section AWG	24 ... 12
Stripping length	7 mm

Environmental and real-life conditions

Ambient conditions

Degree of protection	IP30
Ambient temperature (operation)	-40 °C ... 75 °C

Industrial Ethernet Switch - FL SWITCH 1001T-4POE-GT



1026937

<https://www.phoenixcontact.com/de/produkte/1026937>

Ambient temperature (storage/transport)	-40 °C ... 85 °C
Permissible humidity (operation)	5 % ... 95 % (non-condensing)
Permissible humidity (storage/transport)	5 % ... 95 % (non-condensing)
Air pressure (operation)	57 kPa ... 108 kPa (up to 4850 m above mean sea level)
Air pressure (storage/transport)	57 kPa ... 108 kPa (up to 4850 m above mean sea level)

Approval data

Conformity/Approvals

Conformance	CE-compliant
-------------	--------------

EMC data

Conformance with EMC directives	IEC 61000-6-2 IEC 61000-4-2 (ESD) Criterion B
	IEC 61000-4-3 (immunity to radiated interference) Criterion A
	IEC 61000-4-4 (burst) Criterion A
	IEC 61000-4-5 (surge) Criterion B
	IEC 61000-4-6 (immunity to conducted interference) Criterion A
	IEC 61000-4-8 (immunity to magnetic fields) Criterion A
EN 55022 (emitted interference) Criterion A	
Electromagnetic compatibility	Conformance with EMC Directive 2004/108/EC

LED signaling

Status display	LEDs: U _{S1} , U _{S2} (redundant voltage supply), Alarm (alarm contact), Link/Activity and PoE per Ethernet port
----------------	--

Industrial Ethernet Switch - FL SWITCH 1001T-4POE-GT



1026937

<https://www.phoenixcontact.com/de/produkte/1026937>

Approvals



EAC

Approval ID: RU*-DE.*.B.00741/19



UL Listed

Approval ID: FILE E 238705



cUL Listed

Approval ID: FILE E 238705

cULus Listed

Industrial Ethernet Switch - FL SWITCH 1001T-4POE-GT



1026937

<https://www.phoenixcontact.com/de/produkte/1026937>

Classifications

ECLASS

ECLASS-9.0	19170106
ECLASS-10.0.1	19170402
ECLASS-11.0	19170402

ETIM

ETIM 8.0	EC000734
----------	----------

UNSPSC

UNSPSC 21.0	43222600
-------------	----------

Industrial Ethernet Switch - FL SWITCH 1001T-4POE-GT



1026937

<https://www.phoenixcontact.com/de/produkte/1026937>

Environmental Product Compliance

REACH SVHC	Lead 7439-92-1
China RoHS	Environmentally Friendly Use Period = 10; For information on hazardous substances, refer to the manufacturer's declaration available under "Downloads"

Industrial Ethernet Switch - FL SWITCH 1001T-4POE-GT



1026937

<https://www.phoenixcontact.com/de/produkte/1026937>

Accessories

PCB connector

PCB connector - MSTB 2,5/ 7-ST - 1754546

<https://www.phoenixcontact.com/de/produkte/1754546>



PCB connector, nominal cross section: 2.5 mm², color: green, nominal current: 12 A, rated voltage (III/2): 320 V, contact surface: Tin, type of contact: Female connector, number of potentials: 7, number of rows: 1, number of positions: 7, number of connections: 7, product range: MSTB 2,5/...-ST, pitch: 5 mm, connection method: Screw connection with tension sleeve, screw head form: L Slotted, conductor/PCB connection direction: 0 °, locking clip: - Locking clip, plug-in system: COMBICON MSTB 2,5, locking: without, mounting: without, type of packaging: packed in cardboard

Power supply unit

Power supply unit - QUINT4-PS/1AC/48DC/5 - 2904610

<https://www.phoenixcontact.com/de/produkte/2904610>



Primary-switched QUINT POWER power supply for DIN rail mounting with free choice of output characteristic curve and SFB (Selective Fuse Breaking) technology, input: 1-phase, output: 48 V DC / 5 A

Industrial Ethernet Switch - FL SWITCH 1001T-4POE-GT



1026937

<https://www.phoenixcontact.com/de/produkte/1026937>

Power supply unit

Power supply unit - QUINT4-PS/1AC/48DC/10 - 2904611

<https://www.phoenixcontact.com/de/produkte/2904611>



Primary-switched QUINT POWER power supply for DIN rail mounting with free choice of output characteristic curve and SFB (Selective Fuse Breaking) technology, input: 1-phase, output: 48 V DC / 10 A

Power supply unit

Power supply unit - TRIO-PS-2G/1AC/48DC/5 - 2903159

<https://www.phoenixcontact.com/de/produkte/2903159>



Primary-switched TRIO power supply for DIN rail mounting, input: 1-phase, output: 48 V DC / 5 A, dynamic boost, tool-free fast connection technology for solid and stranded conductors with ferrule

Industrial Ethernet Switch - FL SWITCH 1001T-4POE-GT



1026937

<https://www.phoenixcontact.com/de/produkte/1026937>

Power supply unit

Power supply unit - TRIO-PS-2G/1AC/48DC/10 - 2903160

<https://www.phoenixcontact.com/de/produkte/2903160>



Primary-switched TRIO POWER power supply with push-in connection for DIN rail mounting, input: single phase, output: 48 V DC/10 A

Power supply unit

Power supply unit - UNO-PS/1AC/24DC/150W - 2904376

<https://www.phoenixcontact.com/de/produkte/2904376>



Primary-switched UNO power supply for DIN rail mounting, input: 1-phase, output: 24 V DC/150 W

Industrial Ethernet Switch - FL SWITCH 1001T-4POE-GT



1026937

<https://www.phoenixcontact.com/de/produkte/1026937>

Power supply unit

Power supply unit - UNO-PS/1AC/24DC/240W - 2904372

<https://www.phoenixcontact.com/de/produkte/2904372>



Please use the following item in new systems: 1096432.

Primary-switched UNO power supply for DIN rail mounting, input: 1-phase, output: 24 V DC / 240 W

Ethernet module

Ethernet module - FL PD 1001 T GT - 2891042

<https://www.phoenixcontact.com/de/produkte/2891042>



Factoryline Power over Ethernet splitter (PD) for separating power and data according to IEEE 802.3af and at, no configuration required, can be used with 10, 100, 1000 Mbps networks, 24 V DC output voltage

Industrial Ethernet Switch - FL SWITCH 1001T-4POE-GT



1026937

<https://www.phoenixcontact.com/de/produkte/1026937>

Surge protection device

Surge protection device - DT-LAN-CAT.6+ - 2881007

<https://www.phoenixcontact.com/de/produkte/2881007>



Surge protection in accordance with Class E_A (CAT6_A), for Gigabit Ethernet (up to 10 Gbps), token ring, FDDI/CDDI, ISDN, and DS1. Suitable for Power over Ethernet (PoE++ / 4PPoE) "Mode A" and "Mode B". RJ45 attachment plug with separate grounding cable and ground connection snap-on foot for NS 35 DIN rails.

Patch cable

Patch cable - FL CAT5 PATCH 0,5 - 2832263

<https://www.phoenixcontact.com/de/produkte/2832263>



Patch cable, CAT5, assembled, 0.5 m

Industrial Ethernet Switch - FL SWITCH 1001T-4POE-GT



1026937

<https://www.phoenixcontact.com/de/produkte/1026937>

Patch cable

Patch cable - FL CAT5 PATCH 1,0 - 2832276

<https://www.phoenixcontact.com/de/produkte/2832276>

Patch cable, CAT5, assembled, 1 m



Patch cable

Patch cable - FL CAT5 PATCH 2,0 - 2832289

<https://www.phoenixcontact.com/de/produkte/2832289>

Patch cable, CAT5, assembled, 2 m



Industrial Ethernet Switch - FL SWITCH 1001T-4POE-GT



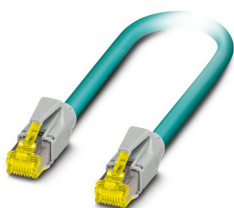
1026937

<https://www.phoenixcontact.com/de/produkte/1026937>

Patch cable

Patch cable - NBC-R4AC-R4AC-IE8A/.../... - 1411854

<https://www.phoenixcontact.com/de/produkte/1411854>

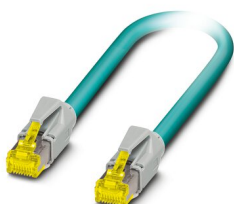


Patch cable, degree of protection: IP20, number of positions: 8, 10 Gbps, CAT6_A, cable outlet: straight, Ethernet

Patch cable

Patch cable - NBC-R4AC/10G-R4AC/10G-94F/2,0 - 1408360

<https://www.phoenixcontact.com/de/produkte/1408360>



Patch cable, CAT6_A, 4-pair, shielded, connection not crossed (line), assembled at both ends with RJ45/IP20 connectors, outer sheath material: PUR, length: 2.0 m

Industrial Ethernet Switch - FL SWITCH 1001T-4POE-GT



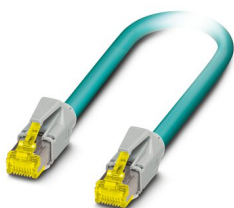
1026937

<https://www.phoenixcontact.com/de/produkte/1026937>

Patch cable

Patch cable - NBC-R4AC/10G-R4AC/10G-94F/3,0 - 1408365

<https://www.phoenixcontact.com/de/produkte/1408365>



Patch cable, CAT6_A, 4-pair, shielded, connection not crossed (line), assembled at both ends with RJ45/IP20 connectors, outer sheath material: PUR, length: 3.0 m

DIN rail adapter

DIN rail adapter - FL DIN RA - 2891053

<https://www.phoenixcontact.com/de/produkte/2891053>



The FL DIN RA is installed in a standard, 19-inch rack (EIA-310-D, IEC 60297-3-100) to allow DIN rail mounted equipment to be rack mounted.

Industrial Ethernet Switch - FL SWITCH 1001T-4POE-GT



1026937

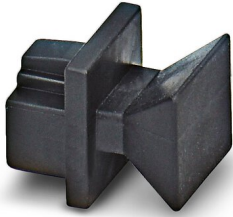
<https://www.phoenixcontact.com/de/produkte/1026937>

Dust protection

Dust protection - FL RJ45 PROTECT CAP - 2832991

<https://www.phoenixcontact.com/de/produkte/2832991>

Dust protection caps for RJ45 socket

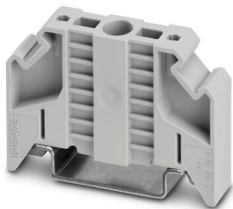


End clamp

End clamp - E/NS 35 N - 0800886

<https://www.phoenixcontact.com/de/produkte/0800886>

End clamp, width: 9.5 mm, color: gray



Phoenix Contact 2023 © - all rights reserved

<https://www.phoenixcontact.com>

PHOENIX CONTACT Deutschland GmbH

Flachsmarktstraße 8

D-32825 Blomberg

+49 52 35/3-1 20 00

info@phoenixcontact.de