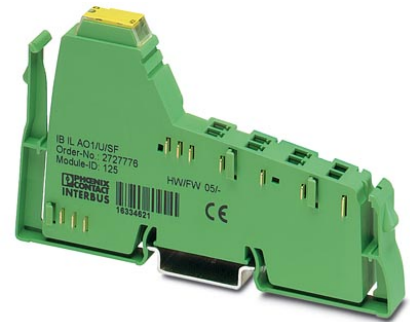


## IB IL AO 1/U/SF

Order No.: 2727776

<http://eshop.phoenixcontact.co.uk/phoenix/treeViewClick.do?UID=2727776>

Inline analog output terminal, without accessories, 1 output, 0-10 V, 2-conductor connection method



Commercial data	
EAN	4017918168223
Pack	1
Customs tariff	85389091
Weight/Piece	53.49 g
Country of Origin	DE
Catalog page information	Page 81 (AX-2007)

### Product notes

WEEE/RoHS-compliant since:  
20/05/2008



Please note that the data given here has been taken from the online catalog. For comprehensive information and data, please refer to the user documentation at <http://www.download.phoenixcontact.com>. The General Terms and Conditions of Use apply to Internet downloads.

### Product description

The analog Inline output terminals are used in applications in which analog actuators are to be addressed.

With these terminals, common current and voltage output ranges can be configured individually. The analog signals are made available with a resolution of 16 bits.

It goes without saying that you also have advantages in handling with the analog Inline output terminals, such as multi-wire connection or the automatic contact with the grounding conductor when the terminal is snapped onto the DIN rail.

The Inline terminals can be labeled using hinged labeling fields. The fields have insert cards that can be labeled individually to suit the application. Additionally, there is the proven ZBFM-6... Zack strip for labeling the terminal points.

## Technical data

### General data

Width	12.2 mm
Height	119.8 mm
Depth	71.5 mm
Weight	46 g
Mounting type	DIN rail
Ambient temperature (operation)	-25 °C ... 55 °C
Ambient temperature (storage/transport)	-25 °C ... 85 °C
Permissible humidity (operation)	10 % ... 95 % (according to DIN EN 61131-2)
Permissible humidity (storage/transport)	10 % ... 95 % (according to DIN EN 61131-2)
Air pressure (operation)	70 kPa ... 106 kPa (up to 3000 m above sea level)
Air pressure (storage/transport)	70 kPa ... 106 kPa (up to 3000 m above sea level)
Degree of protection	IP20
Class of protection	Class 3 as per VDE 0106, IEC 61440
Test section	7.5 V supply (bus logics), 24 V supply UANA / I/O 500 V AC 50 Hz 1 min
	7.5 V supply (bus logics), 24 V supply UANA / functional earth ground 500 V AC 50 Hz 1 min
	24 V supply (I/O) / functional earth ground 500 V AC 50 Hz 1 min

### Interface

Name	Inline local bus
Type of connection	Inline data jumper
Transmission speed	500 kbps
	500 kBit/s
Transmission physics	Copper

### Inline potential routing

Communications voltage $U_L$	7.5 V DC (via voltage jumper)
Current consumption from $U_L$	max. 40 mA
	Typ. 30 mA
I/O supply voltage $U_{ANA}$	24 V DC
Current consumption from $U_{ANA}$	max. 20 mA
	Typ. 15 mA

### Analog outputs

Number of outputs	1
Connection method	2-wire (shielded)
Output name	Analog outputs
Resolution D/A	16 Bit
Name of protection	Transient protection of outputs
Representation of measured value	16 bits (15 bits + sign bit)
DAC resolution	16 bits
Process data update	< 1 ms
Current output signal	0 mA ... 20 mA 4 mA ... 20 mA
Load/output load current output	> 500 $\Omega$
Voltage output signal	0 V ... 10 V
Load/output load voltage output	> 2 k $\Omega$ 0.05 %
Precision	Typ. 0.5 % (of output range final value)

### Certificates



Certification	CUL, GOST, UL
Certification Ex:	CUL-EX LIS, UL-EX LIS

#### CUL

Nominal voltage $U_N$	10 V
-----------------------	------

#### UL

Nominal voltage $U_N$	10 V
-----------------------	------

### Accessories

Item	Designation	Description
------	-------------	-------------

#### Literature

2745554	IB IL SYS PRO UM	User Manual, German, for configuring and installing the INTERBUS Inline product range
---------	------------------	---

**Marking**

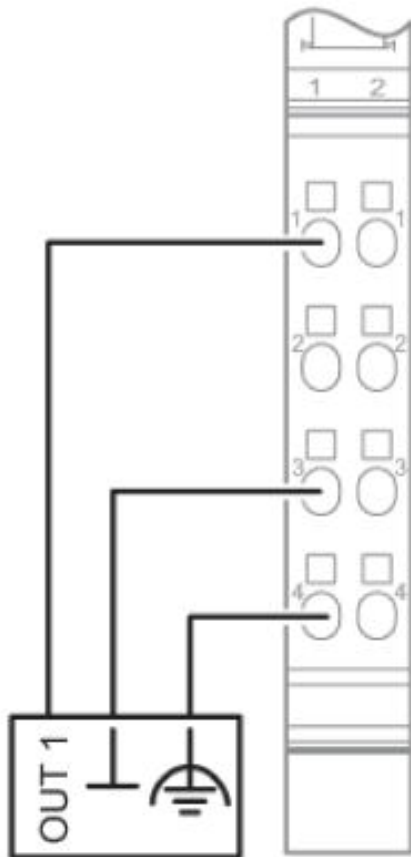
0809492	ESL 62X10	Insert strip for laser printer, lettering field: 62 x 10 mm
2727501	IB IL FIELD 2	Labeling field, width: 12.2 mm

**Plug/Adapter**

2732664	IB IL AO/CNT-PLSET	Connector set
2726353	IB IL SCN-6 SHIELD	Shield connector, for analog Inline terminals
2726337	IB IL SCN-8	Connector, for digital 1, 2 or 8-channel Inline terminals
2727608	IB IL SCN-8-CP	Inline connector, colored

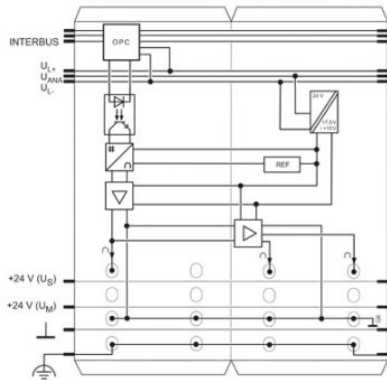
**Drawings**

Connection diagram



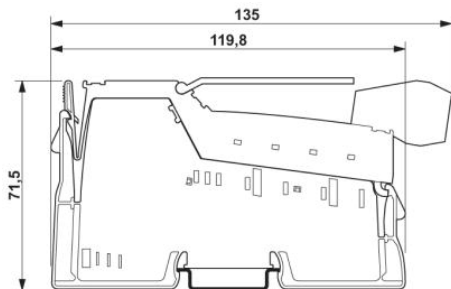
Block diagram

---



Dimensioned drawing

---



**Address**

PHOENIX CONTACT Ltd  
Halesfield 13  
Telford / Shropshire / TF7 4PG,England  
Phone 01952 681 700  
Fax 01952 681 799  
<http://www.phoenixcontact.co.uk>



Phoenix Contact Ltd.  
Technical modifications reserved;