

Output signal conditioner - MACX MCR-EX-IDS-I-I-SP



2908062

<https://www.phoenixcontact.com/de/produkte/2908062>

Please be informed that the data shown in this PDF document is generated from our Online Catalog. Please find the complete data in the user documentation. Our General Terms of Use for Downloads are valid.



Ex i output signal conditioner, HART-transparent. Isolates and transmits 0/4 mA ... 20 mA signals with intrinsic safety to a load in the Ex area. 3-way electrical isolation, line fault detection (can be switched off via DIP switch), SIL 2 (SC3) in accordance with IEC 61508, Push-in connection.

Commercial Data

| | |
|--------------------------------------|------------------|
| Item number | 2908062 |
| Packing unit | 1 pc |
| Minimum order quantity | 1 pc |
| Sales Key | J1 - MSR-Technik |
| Product Key | CK3112 |
| GTIN | 4055626274591 |
| Weight per Piece (including packing) | 169,8 g |
| Weight per Piece (excluding packing) | 160 g |
| Customs tariff number | 85437090 |
| Country of origin | DE |

Technical Data

Product properties

| | |
|----------------|---|
| Product type | Output signal conditioner |
| Product family | MACX Analog |
| Type | Ex i signal conditioners with SIL functional safety |
| Configuration | DIP switches |

Insulation characteristics: GB Standard

| | |
|----------------------|----|
| Overvoltage category | II |
| Pollution degree | 2 |

Electrical properties

| | |
|----------------------------------|---|
| Electrical isolation | 3-way isolation |
| Signal transmission behavior | In = Out |
| Step response (10-90%) | < 140 μ s (for 4 mA ... 20 mA step) |
| Maximum temperature coefficient | 0.01 %/K |
| Temperature coefficient, typical | \leq 0.005 %/K |
| Maximum transmission error | 0.1 % (of final value) |
| Transmission error, typical | \leq 0.05 % (of final value) |

Electrical isolation Input/output

| | |
|--------------------------|--|
| Rated insulation voltage | 300 V _{rms} |
| Test voltage | 2.5 kV AC (50 Hz, 60 s) |
| Insulation | Safe isolation in accordance with IEC/EN 61010-1 |
| Altitude | \leq 2000 m |

Electrical isolation Input/power supply

| | |
|--------------------------|--|
| Rated insulation voltage | 50 V _{rms} |
| Test voltage | 1.5 kV AC (50 Hz, 60 s) |
| Insulation | Basic insulation in accordance with IEC/EN 61010-1 |
| Altitude | \leq 2000 m |

Electrical isolation Output/supply

| | |
|--------------------------|--|
| Rated insulation voltage | 300 V _{rms} |
| Test voltage | 2.5 kV AC (50 Hz, 60 s) |
| Insulation | Safe isolation in accordance with IEC/EN 61010-1 |
| Altitude | \leq 2000 m |

Electrical isolation Output/input

| | |
|----------------------|---|
| Electrical isolation | 375 V (Peak value in accordance with IEC/EN 60079-11) |
| Altitude | \leq 2000 m |

Electrical isolation Output/supply

| | |
|----------------------|---|
| Electrical isolation | 375 V (Peak value in accordance with IEC/EN 60079-11) |
| Altitude | \leq 2000 m |

Output signal conditioner - MACX MCR-EX-IDS-I-I-SP



2908062

<https://www.phoenixcontact.com/de/produkte/2908062>

Supply

| | |
|--------------------------|--|
| Nominal supply voltage | 24 V DC |
| Supply voltage range | 19.2 V DC ... 30 V DC (24 V DC, -20 % ... +25 %) |
| Max. current consumption | < 45 mA (at 24 V DC / 20 mA) |
| Power dissipation | < 0.8 W (at 24 V DC / 20 mA) |
| Power consumption | ≤ 1.1 W (at 24 V DC / 20 mA) |

Input data

Signal: Current

| | |
|----------------------|--|
| Current input signal | 0 mA ... 20 mA (Function (short-circuit detection off)) |
| | 0.2 mA ... 20 mA (Function (short-circuit detection on)) |
| | 4 mA ... 20 mA (Safety) |
| | 0 mA ... 24 mA (Underload/overload range) |
| Input current | ≤ 30 mA |
| Input impedance | > 1 MΩ (If there is a line fault) |
| Line fault detection | > 0.2 mA (Response threshold of input current) |
| Voltage drop | < 2.4 V (at 20 mA) |

Output data

Signal: Current

| | |
|-----------------------|--|
| Output description | intrinsically safe |
| Current output signal | 0 mA ... 20 mA (Function (short-circuit detection off)) |
| | 0.2 mA ... 20 mA (Function (short-circuit detection on)) |
| | 4 mA ... 20 mA (Safety) |
| | 0 mA ... 24 mA (Underload/overload range) |
| Load | 100 Ω ... 700 Ω (20 mA (short-circuit detection on)) |
| | 100 Ω ... 650 Ω (20.5 mA (short-circuit detection on)) |
| | 100 Ω ... 500 Ω (24 mA (short-circuit detection on)) |
| | 0 Ω ... 700 Ω (20 mA (short-circuit detection off)) |
| | 0 Ω ... 650 Ω (20.5 mA (short-circuit detection off)) |
| | 0 Ω ... 500 Ω (24 mA (short-circuit detection off)) |
| Output ripple | < 20 mV _{rms} |
| Non-load voltage | ≤ 27 V |
| Line fault detection | > 10 kΩ (Line break) |
| | < 50 Ω (Short circuit) |

Connection data

| | |
|----------------------------------|---|
| Connection method | Push-in connection |
| Stripping length | 8 mm |
| Conductor cross section solid | 0.2 mm ² ... 1.5 mm ² |
| Conductor cross section flexible | 0.2 mm ² ... 1.5 mm ² |
| Conductor cross section AWG | 24 ... 16 |

Output signal conditioner - MACX MCR-EX-IDS-I-I-SP



2908062

<https://www.phoenixcontact.com/de/produkte/2908062>

COMBICON connection

| | |
|---------------|------|
| Max. diameter | 2 mm |
|---------------|------|

Ex data

| | |
|-----------------------|--------|
| Ex installation (EPL) | Gc |
| | Div. 2 |
| Ex i circuits (EPL) | Ga |
| | Da |
| | Ma |
| | Div. 1 |

Safety data

| | |
|---|--|
| Max. internal inductance L_i | negligible |
| Max. internal capacitance C_i | negligible |
| Max. output voltage U_o | 25.2 V |
| Max. output current I_o | 93 mA |
| Max. output power P_o | 586 mW |
| Safety-related maximum voltage U_m | 253 V AC (non-intrinsically-safe circuit) |
| | 125 V DC (non-intrinsically-safe circuit) |
| IIC (simple circuit): Max. external inductivity L_o / Max. external capacitance C_o | 2 mH / 104 nF |
| IIC (mixed circuit): Max. external inductivity L_o / Max. external capacitance C_o | 2 mH / 46 nF, 1 mH / 60 nF, 500 μ H / 77 nF, 200 μ H / 104 nF |
| IIB (simple circuit): Max. external inductivity L_o / Max. external capacitance C_o | 4 mH / 817 nF |
| IIB (mixed circuit): Max. external inductivity L_o / Max. external capacitance C_o | 4 mH / 367 nF, 1 mH / 427 nF, 500 μ H / 507 nF, 200 μ H / 657 nF, 100 μ H / 817 nF |
| IIA (simple circuit): Max. external inductivity L_o / Max. external capacitance C_o | 10 mH / 2.9 μ F |
| IIA (mixed circuit): Max. external inductivity L_o / Max. external capacitance C_o | 10 mH / 587 nF, 1 mH / 627 nF, 500 μ H / 717 nF, 200 μ H / 907 nF, 100 μ H / 1.1 μ F |

Interfaces

Data communication (bypass)

| | |
|---------------------|------------------|
| HART function | Yes |
| Protocols supported | HART-transparent |

LED signaling

| | |
|----------------|----------------------------|
| Status display | Green LED (supply voltage) |
|----------------|----------------------------|

Software

Functionality

| | |
|---------------|--------------|
| Configuration | DIP switches |
|---------------|--------------|

Dimensions

Output signal conditioner - MACX MCR-EX-IDS-I-I-SP



2908062

<https://www.phoenixcontact.com/de/produkte/2908062>

| | |
|-----------------|--|
| Width | 12.5 mm |
| Height | 116 mm |
| Depth | 113.7 mm |
| Depth NS 35/7,5 | 114.5 mm (Snapped onto DIN rail NS 35/7,5 in accordance with EN 60715) |

Material specifications

| | |
|--|--------------|
| Flammability rating according to UL 94 | V0 (Housing) |
| Housing material | PA 6.6-FR |

Environmental and real-life conditions

Ambient conditions

| | |
|---|--|
| Degree of protection | IP20 |
| Ambient temperature (operation) | -40 °C ... 70 °C (Any mounting position) |
| Ambient temperature (storage/transport) | -40 °C ... 85 °C |
| Permissible humidity (operation) | 5 % ... 95 % (non-condensing) |

Altitude range (≤ 2000 m (Ex))

| | |
|---------------------------------|---|
| Description | Ex applications |
| Altitude | ≤ 2000 m (For use at altitudes ≥ 2000 m above sea level, see data sheet.) |
| Ambient temperature (operation) | -40 °C ... 70 °C |
| Rated insulation voltage | 320 V (Power supply, input / output) |

Altitude range (≤ 3000 m (Ex))

| | |
|--------------------------------------|--|
| Description | Ex applications |
| Height range | > 2000 m ... 3000 m |
| Ambient temperature (operation) | -40 °C ... 60 °C |
| Safety-related maximum voltage U_m | 190 V AC (non-intrinsically-safe circuit) 110 V DC (non-intrinsically-safe circuit) |
| Rated insulation voltage | 190 V (Power supply, input / output) |

Altitude range (≤ 4000 m (Ex))

| | |
|--------------------------------------|--|
| Description | Ex applications |
| Height range | > 3000 m ... 4000 m |
| Ambient temperature (operation) | -40 °C ... 55 °C |
| Safety-related maximum voltage U_m | 60 V AC (non-intrinsically-safe circuit) 60 V DC (non-intrinsically-safe circuit) |
| Rated insulation voltage | 63 V (Power supply, input / output) |

Altitude range (≤ 5000 m (Ex))

| | |
|--------------------------------------|--|
| Description | Ex applications |
| Height range | > 4000 m ... 5000 m |
| Ambient temperature (operation) | -40 °C ... 45 °C |
| Safety-related maximum voltage U_m | 60 V AC (non-intrinsically-safe circuit) 60 V DC (non-intrinsically-safe circuit) |

Output signal conditioner - MACX MCR-EX-IDS-I-I-SP



2908062

<https://www.phoenixcontact.com/de/produkte/2908062>

| | |
|--------------------------|-------------------------------------|
| Rated insulation voltage | 63 V (Power supply, input / output) |
|--------------------------|-------------------------------------|

Altitude range (≤ 2000 m)

| | |
|---------------------------------|--|
| Description | Non-Ex applications (EN 61010-1) |
| Altitude | ≤ 2000 m (For use at altitudes ≥2000 m above sea level, see data sheet.) |
| Ambient temperature (operation) | -40 °C ... 70 °C |
| Rated insulation voltage | 300 V (Power supply, input / output) |

Altitude range (≤ 3000 m)

| | |
|---------------------------------|--------------------------------------|
| Description | Non-Ex applications (EN 61010-1) |
| Height range | > 2000 m ... 3000 m |
| Ambient temperature (operation) | -40 °C ... 60 °C |
| Rated insulation voltage | 150 V (Power supply, input / output) |

Altitude range (≤ 4000 m)

| | |
|---------------------------------|--------------------------------------|
| Description | Non-Ex applications (EN 61010-1) |
| Height range | > 3000 m ... 4000 m |
| Ambient temperature (operation) | -40 °C ... 55 °C |
| Rated insulation voltage | 150 V (Power supply, input / output) |

Altitude range (≤ 5000 m)

| | |
|---------------------------------|--------------------------------------|
| Description | Non-Ex applications (EN 61010-1) |
| Height range | > 4000 m ... 5000 m |
| Ambient temperature (operation) | -40 °C ... 45 °C |
| Rated insulation voltage | 150 V (Power supply, input / output) |

Approval data

CE

| | |
|-------------|--------------|
| Certificate | CE-compliant |
| Note | and EN 61326 |

ATEX

| | |
|----------------|--|
| Identification | <input type="checkbox"/> I (M1) [Ex ia Ma] I |
| | <input type="checkbox"/> II (1) G [Ex ia Ga] IIC |
| | <input type="checkbox"/> II (1) D [Ex ia Da] IIIC |
| | <input type="checkbox"/> II 3(1) G Ex ec [ia Ga] IIC T4 Gc |
| Certificate | BVS 20 ATEX E 004 X |

IECEX

| | |
|----------------|-------------------------|
| Identification | [Ex ia Ma] I |
| | [Ex ia Ga] IIC |
| | [Ex ia Da] IIIC |
| | Ex ec [ia Ga] IIC T4 Gc |
| Certificate | IECEX BVS 20.0003X |

CCC / China-Ex

Output signal conditioner - MACX MCR-EX-IDS-I-I-SP



2908062

<https://www.phoenixcontact.com/de/produkte/2908062>

| | |
|----------------|-------------------------|
| Identification | [Ex ia Ga] IIC |
| | [Ex iaD] |
| | Ex nA [ia Ga] IIC T4 Gc |

INMETRO

| | |
|----------------|-------------------------|
| Identification | [Ex ia Ma] I |
| | [Ex ia Ga] IIC |
| | [Ex ia Da] IIIC |
| | Ex ec [ia Ga] IIC T4 Gc |
| Certificate | DNV 21.0092 X |

UL, USA / Canada

| | |
|----------------|--|
| Identification | UL 61010 Listed |
| | Class I Div 2; IS for Class I, II, III Div 1 |
| Certificate | □, C.D.-No 83104549 |

Shipbuilding approval

| | |
|-------------|-------------------|
| Certificate | DNV GL TAA00000AG |
|-------------|-------------------|

EAC

| | |
|----------------|---------------------------|
| Identification | [Ex ia Ga] IIC X |
| | 2Ex e [ia Ga] IIC T4 Gc X |
| Certificate | RU C-DE.HB49.B.00145/21 |

Safety Integrity Level (SIL, IEC 61508)

| | |
|----------------|---|
| Identification | 2 |
|----------------|---|

Systematic Capability

| | |
|----------------|---|
| Identification | 3 |
|----------------|---|

DNV GL data

| | |
|-------------|---|
| Temperature | B |
| Humidity | B |
| Vibration | A |
| EMC | B |
| Enclosure | Required protection according to the Rules shall be provided upon installation on board |

EMC data

| | |
|-------------------------------|--|
| Electromagnetic compatibility | Conformance with EMC directive |
| Noise emission | EN 61000-6-4 |
| Noise immunity | EN 61000-6-2 |
| Note | When being exposed to interference, there may be minimal deviations. |

Standards and regulations

| | |
|----------------------|-----------------|
| Electrical isolation | 3-way isolation |
|----------------------|-----------------|

Output signal conditioner - MACX MCR-EX-IDS-I-I-SP



2908062

<https://www.phoenixcontact.com/de/produkte/2908062>

GB Standard

| | |
|-----------------------|-----------|
| Standards/regulations | GB 3836.1 |
| | GB 3836.4 |
| | GB 3836.8 |

Mounting

| | |
|---------------|-------------------|
| Mounting type | DIN rail mounting |
|---------------|-------------------|

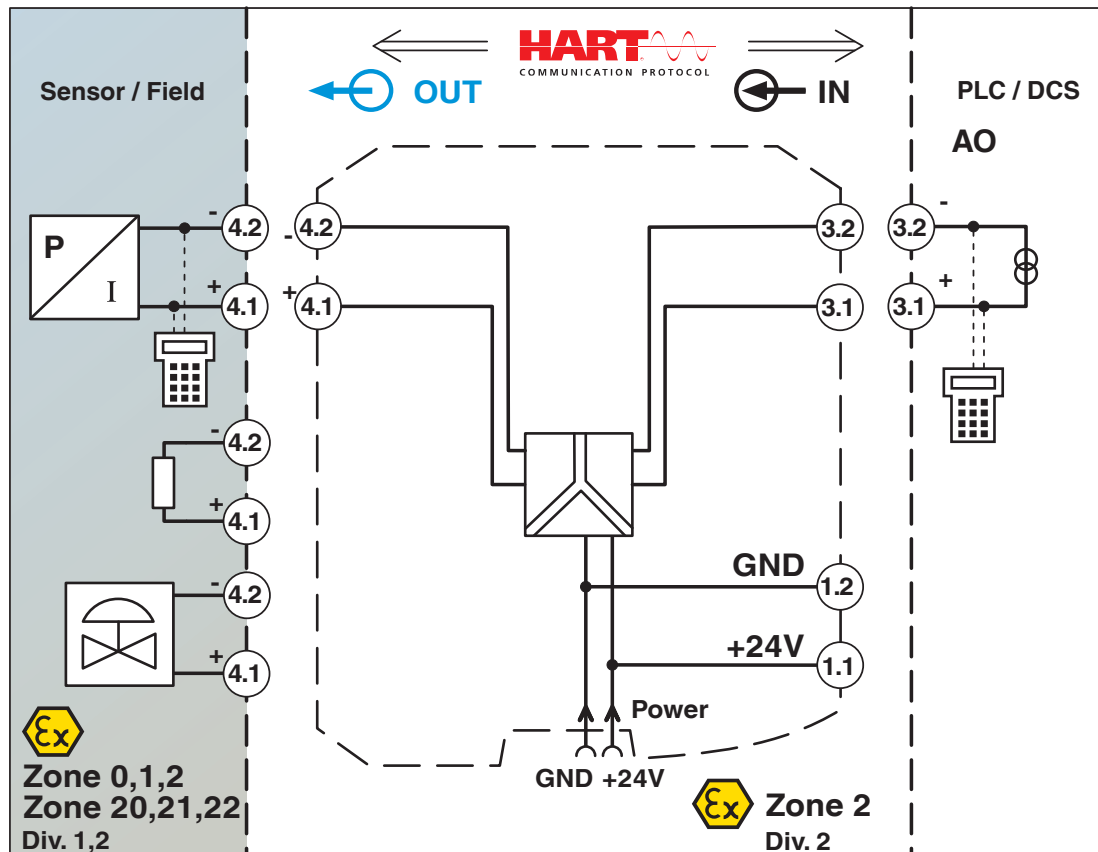
Output signal conditioner - MACX MCR-EX-IDS-I-I-SP

2908062

<https://www.phoenixcontact.com/de/produkte/2908062>

Drawings

Block diagram



Output signal conditioner - MACX MCR-EX-IDS-I-I-SP



2908062

<https://www.phoenixcontact.com/de/produkte/2908062>

Approvals



DNV GL

Approval ID: TAA00000AG



UL Listed

Approval ID: FILE E 330267



CCC

Approval ID: 2021122316114080



cUL Listed

Approval ID: FILE E 330267



DNV GL

Approval ID: TAA00000AG

Functional Safety

Approval ID: ZP/C002/20



IECEX

Approval ID: IECEX BVS 20.0003X



cUL Listed

Approval ID: FILE E 199827



UL Listed

Approval ID: FILE E 199827



ATEX

Approval ID: BVS 20 ATEX E 004 X

INMETRO

Approval ID: DNV 21.0092 X



EAC Ex

Approval ID: RU C-DE.HB49.B.00145

Output signal conditioner - MACX MCR-EX-IDS-I-I-SP



2908062

<https://www.phoenixcontact.com/de/produkte/2908062>

cULus Listed

cULus Listed

2908062

<https://www.phoenixcontact.com/de/produkte/2908062>

Classifications

ECLASS

| | |
|---------------|----------|
| ECLASS-9.0 | 27210120 |
| ECLASS-10.0.1 | 27210120 |
| ECLASS-11.0 | 27210120 |

ETIM

| | |
|----------|----------|
| ETIM 8.0 | EC002653 |
|----------|----------|

UNSPSC

| | |
|-------------|----------|
| UNSPSC 21.0 | 39121000 |
|-------------|----------|

Output signal conditioner - MACX MCR-EX-IDS-I-I-SP



2908062

<https://www.phoenixcontact.com/de/produkte/2908062>

Environmental Product Compliance

| | |
|------------|--|
| REACH SVHC | Lead 7439-92-1 |
| China RoHS | Environmentally Friendly Use Period = 50 years |
| | For information on hazardous substances, refer to the manufacturer's declaration available under "Downloads" |

Output signal conditioner - MACX MCR-EX-IDS-I-I-SP



2908062

<https://www.phoenixcontact.com/de/produkte/2908062>

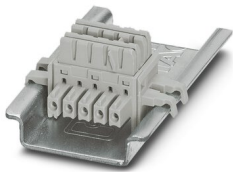
Accessories

DIN rail bus connectors

DIN rail bus connectors - ME 6,2 TBUS-2 1,5/5-ST-3,81 GY - 2695439

<https://www.phoenixcontact.com/de/produkte/2695439>

DIN rail connector (TBUS), 5-pos., for bridging the supply voltage, can be snapped onto NS 35/... DIN rail in accordance with EN 60715



Module carrier

Module carrier - TC-D37SUB-ADIO16-EX-P-UNI - 2924854

<https://www.phoenixcontact.com/de/produkte/2924854>

Universal termination carrier for connecting 16 MACX Analog Ex i signal conditioners to digital or analog I/O cards, via D-SUB connector, 37-pos. (1:1 connection)



Output signal conditioner - MACX MCR-EX-IDS-I-I-SP

2908062

<https://www.phoenixcontact.com/de/produkte/2908062>

Module carrier

Module carrier - TC-D37SUB-AIO16-EX-PS-UNI - 2902932

<https://www.phoenixcontact.com/de/produkte/2902932>



Universal termination carrier for connecting 16 MACX Analog Ex i signal conditioners to digital or analog I/O cards, via D-SUB connector, 37-pos. (1:1 connection), with HART multiplexer connection

Power and error message module

Power and error message module - MACX MCR-PTB - 2865625

<https://www.phoenixcontact.com/de/produkte/2865625>



Power and fault signaling module with screw connection, including corresponding ME 17,5 TBUS 1,5/ 5-ST-3,81 GY DIN rail connector

Output signal conditioner - MACX MCR-EX-IDS-I-I-SP

2908062

<https://www.phoenixcontact.com/de/produkte/2908062>

Power and error message module

Power and error message module - MACX MCR-PTB-SP - 2924184

<https://www.phoenixcontact.com/de/produkte/2924184>



Power and fault signaling module with Push-in connection, including corresponding ME 17,5 TBUS 1,5/ 5-ST-3,81 GY DIN rail connector

Power supply unit

Power supply unit - QUINT4-SYS-PS/1AC/24DC/2.5/SC - 2904614

<https://www.phoenixcontact.com/de/produkte/2904614>



Primary-switched power supply, QUINT POWER, screw connection, DIN rail mounting, supply of devices possible via the TBUS DIN rail connector, input: single-phase, output: 24 V DC/2.5 A

2908062

<https://www.phoenixcontact.com/de/produkte/2908062>

Insulating sleeve

Insulating sleeve - MPS-IH WH - 0201663

<https://www.phoenixcontact.com/de/produkte/0201663>

Insulating sleeve, color: white



Insulating sleeve

Insulating sleeve - MPS-IH RD - 0201676

<https://www.phoenixcontact.com/de/produkte/0201676>

Insulating sleeve, color: red



2908062

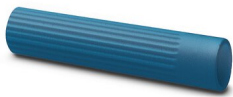
<https://www.phoenixcontact.com/de/produkte/2908062>

Insulating sleeve

Insulating sleeve - MPS-IH BU - 0201689

<https://www.phoenixcontact.com/de/produkte/0201689>

Insulating sleeve, color: blue



Insulating sleeve

Insulating sleeve - MPS-IH YE - 0201692

<https://www.phoenixcontact.com/de/produkte/0201692>

Insulating sleeve, color: yellow



2908062

<https://www.phoenixcontact.com/de/produkte/2908062>

Insulating sleeve

Insulating sleeve - MPS-IH GN - 0201702

<https://www.phoenixcontact.com/de/produkte/0201702>

Insulating sleeve, color: green



Insulating sleeve

Insulating sleeve - MPS-IH GY - 0201728

<https://www.phoenixcontact.com/de/produkte/0201728>

Insulating sleeve, color: gray



2908062

<https://www.phoenixcontact.com/de/produkte/2908062>

Insulating sleeve

Insulating sleeve - MPS-IH BK - 0201731

<https://www.phoenixcontact.com/de/produkte/0201731>

Insulating sleeve, color: black



Test plugs

Test plugs - MPS-MT - 0201744

<https://www.phoenixcontact.com/de/produkte/0201744>

Test plugs, with solder connection up to 1 mm² conductor cross section, color: gray



2908062

<https://www.phoenixcontact.com/de/produkte/2908062>

Plastic label

Plastic label - UC-EMLP (11X9) - 0819291

<https://www.phoenixcontact.com/de/produkte/0819291>

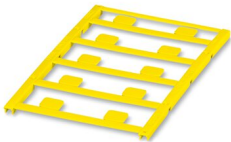


Plastic label, Sheet, white, unlabeled, can be labeled with: BLUEMARK ID COLOR, BLUEMARK ID, BLUEMARK CLED, PLOTMARK, CMS-P1-PLOTTER, mounting type: adhesive, lettering field size: 11 x 9 mm, Number of individual labels: 10

Plastic label

Plastic label - UC-EMLP (11X9) YE - 0822602

<https://www.phoenixcontact.com/de/produkte/0822602>



Plastic label, Sheet, yellow, unlabeled, can be labeled with: BLUEMARK ID COLOR, BLUEMARK ID, BLUEMARK CLED, PLOTMARK, CMS-P1-PLOTTER, mounting type: adhesive, lettering field size: 11 x 9 mm, Number of individual labels: 10

2908062

<https://www.phoenixcontact.com/de/produkte/2908062>

Plastic label

Plastic label - UC-EMLP (11X9) CUS - 0824547

<https://www.phoenixcontact.com/de/produkte/0824547>

Plastic label, can be ordered: by sheet, white, labeled according to customer specifications, mounting type: adhesive, lettering field size: 11 x 9 mm

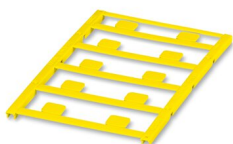


Plastic label

Plastic label - UC-EMLP (11X9) YE CUS - 0824548

<https://www.phoenixcontact.com/de/produkte/0824548>

Plastic label, can be ordered: by sheet, yellow, labeled according to customer specifications, mounting type: adhesive, lettering field size: 11 x 9 mm



Output signal conditioner - MACX MCR-EX-IDS-I-I-SP

2908062

<https://www.phoenixcontact.com/de/produkte/2908062>

Plastic label

Plastic label - UC-EMLP (11X9) SR - 0828094

<https://www.phoenixcontact.com/de/produkte/0828094>



Plastic label, Sheet, silver, unlabeled, can be labeled with: BLUEMARK ID COLOR, BLUEMARK ID, BLUEMARK CLED, PLOTMARK, CMS-P1-PLOTTER, mounting type: adhesive, lettering field size: 11 x 9 mm, Number of individual labels: 10

Plastic label

Plastic label - UC-EMLP (11X9) SR CUS - 0828098

<https://www.phoenixcontact.com/de/produkte/0828098>



Plastic label, can be ordered: by sheet, silver, labeled according to customer specifications, mounting type: adhesive, lettering field size: 11 x 9 mm, Number of individual labels: 10

Output signal conditioner - MACX MCR-EX-IDS-I-I-SP



2908062

<https://www.phoenixcontact.com/de/produkte/2908062>

Plastic label

Plastic label - US-EMLP (11X9) - 0828789

<https://www.phoenixcontact.com/de/produkte/0828789>



Plastic label, Card, white, unlabeled, can be labeled with: BLUEMARK ID COLOR, BLUEMARK ID, THERMOMARK PRIME, THERMOMARK CARD 2.0, THERMOMARK CARD, mounting type: adhesive, lettering field size: 11 x 9 mm, Number of individual labels: 135

Plastic label

Plastic label - US-EMLP (11X9) YE - 0828871

<https://www.phoenixcontact.com/de/produkte/0828871>



Plastic label, Card, yellow, unlabeled, can be labeled with: BLUEMARK ID COLOR, BLUEMARK ID, THERMOMARK PRIME, THERMOMARK CARD 2.0, THERMOMARK CARD, mounting type: adhesive, lettering field size: 11 x 9 mm, Number of individual labels: 135

Output signal conditioner - MACX MCR-EX-IDS-I-I-SP



2908062

<https://www.phoenixcontact.com/de/produkte/2908062>

Plastic label

Plastic label - US-EMLP (11X9) SR - 0828872

<https://www.phoenixcontact.com/de/produkte/0828872>

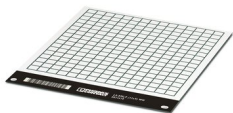


Plastic label, Card, silver, unlabeled, can be labeled with: BLUEMARK ID COLOR, BLUEMARK ID, THERMOMARK PRIME, THERMOMARK CARD 2.0, THERMOMARK CARD, mounting type: adhesive, lettering field size: 11 x 9 mm, Number of individual labels: 135

Device marker

Device marker - LS-EMLP (11X9) WH - 0831678

<https://www.phoenixcontact.com/de/produkte/0831678>



Device marker, Sheet, white, unlabeled, can be labeled with: TOPMARK NEO, TOPMARK LASER, mounting type: adhesive, lettering field size: 11 x 9 mm, Number of individual labels: 255

Output signal conditioner - MACX MCR-EX-IDS-I-I-SP



2908062

<https://www.phoenixcontact.com/de/produkte/2908062>

Device marker

Device marker - LS-EMLP (11X9) SR - 0831705

<https://www.phoenixcontact.com/de/produkte/0831705>

Device marker, Sheet, silver, unlabeled, can be labeled with: TOPMARK NEO, TOPMARK LASER, mounting type: adhesive, lettering field size: 11 x 9 mm, Number of individual labels: 255

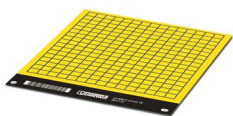


Device marker

Device marker - LS-EMLP (11X9) YE - 0831732

<https://www.phoenixcontact.com/de/produkte/0831732>

Device marker, Sheet, yellow, unlabeled, can be labeled with: TOPMARK NEO, TOPMARK LASER, mounting type: adhesive, lettering field size: 11 x 9 mm, Number of individual labels: 255



Phoenix Contact 2023 © - all rights reserved
<https://www.phoenixcontact.com>

PHOENIX CONTACT Deutschland GmbH
Flachsmarktstraße 8
D-32825 Blomberg
+49 52 35/3-1 20 00
info@phoenixcontact.de