

Signaling system - PSI-MODEM-SMS-REL/6ADI/4DO/DC - 2313520

Please be informed that the data shown in this PDF Document is generated from our Online Catalog. Please find the complete data in the user's documentation. Our General Terms of Use for Downloads are valid (<http://download.phoenixcontact.com>)




SMS remote control and signaling system for mounting on EN DIN rail. Installation built-in device as per DIN 43880. 6 analog or digital configurable inputs and 4 relay outputs. Supply voltage 24 V DC. Scope of supply: SMS relay, antenna, software, RS-232 cable.

Why buy this product

- SMS status query of all inputs and outputs
- SMS remote control of outputs
- Notification via SMS on change of status at input
- Integrated phone book for up to 50 numbers
- Maximum of 5 receivers per SMS message
- Easy configuration on PC without programming knowledge
- Configuration software and programming cable supplied as standard
- Can be used worldwide
- Installation component model according to DIN 43880
- Alarm generation on voltage failure via SMS
- Password protection
- Switching of outputs for a predefined time
- RS-232 configuration interface
- GSM mobile phone network: 850, 900, 1800, and 1900 MHz



Key commercial data

Packing unit	1 pc
GTIN	 4 046356 466127
Weight per Piece (excluding packing)	546.6 g
Weight per piece (including packing)	546.6 g
Custom tariff number	85176200
Country of origin	Switzerland
Sales Key	M1 - Communication Techn.

Signaling system - PSI-MODEM-SMS-REL/6ADI/4DO/DC - 2313520

Technical data

Dimensions

Width	88 mm
Height	90 mm
Depth	60 mm

Ambient conditions

Ambient temperature (operation)	-25 °C ... 55 °C
Ambient temperature (storage/transport)	-40 °C ... 85 °C

Switching output ODL

Contact type	Single contact, 4x1 PDT contact
Name	Relay outputs
Minimum switching voltage	12 V AC/DC
Maximum switching voltage	250 V AC/DC
Limiting continuous current	10 A

Power supply

Supply voltage range	12 V DC ... 48 V DC
Typical current consumption	< 15 mA (24 V DC)

General

Electromagnetic compatibility	Conformance with R&TTE directive 1999/5/EC
Color	white

Radio interface

Interface description	GSM
Frequency	850 MHz (2 W (EGSM))
	900 MHz (2 W (EGSM))
	1800 MHz (1 W (EGSM))
	1900 MHz (1 W (EGSM))
Antenna	50 Ω impedance SMA antenna socket

Classifications

eCl@ss

eCl@ss 4.0	27250312
eCl@ss 4.1	27250312
eCl@ss 5.0	27242208
eCl@ss 5.1	27242208
eCl@ss 6.0	27242208
eCl@ss 7.0	27242208
eCl@ss 8.0	27242208

Signaling system - PSI-MODEM-SMS-REL/6ADI/4DO/DC - 2313520

Classifications

ETIM

ETIM 2.0	EC000310
ETIM 3.0	EC000310
ETIM 4.0	EC000310
ETIM 5.0	EC000740

UNSPSC

UNSPSC 6.01	30211506
UNSPSC 7.0901	39121008
UNSPSC 11	39121008
UNSPSC 12.01	39121008
UNSPSC 13.2	43201553

Approvals

Approvals

Approvals

UL Listed / cUL Listed / UL Listed / cUL Listed / cULus Listed

Ex Approvals

Approvals submitted

Approval details

UL Listed

cUL Listed

UL Listed

Signaling system - PSI-MODEM-SMS-REL/6ADI/4DO/DC - 2313520

Approvals

cUL Listed

cULus Listed

Accessories

Accessories

Antenna

Antenna - PSI-GSM/UMTS-QB-ANT - 2313371



GSM UMTS antenna, with omnidirectional characteristic, 2 m antenna cable with SMA round connector

Antenna - PSI-GSM/UMTS-ANT-OMNI-2-5 - 2900982



GSM/UMTS omnidirectional antenna, 2 dBi gain, 5 m antenna cable with SMA circular connector

Arrester test system

Conductor - CM-KBL-RS232/USB - 2881078



Connecting cable D-9-SUB to USB, with adapter D-9-SUB to D-25-SUB.

Coaxial cable

Signaling system - PSI-MODEM-SMS-REL/6ADI/4DO/DC - 2313520

Accessories

Antenna cable - PSI-CAB-GSM/UMTS- 5M - 2900980

GSM/UMTS antenna cable, 5 m long; SMA (male) -> SMA (female), 50 Ohm impedance



Antenna cable - PSI-CAB-GSM/UMTS-10M - 2900981

GSM/UMTS antenna cable, 10 m long; SMA (male) -> SMA (female), 50 Ohm impedance



Surge protection for transceiver systems

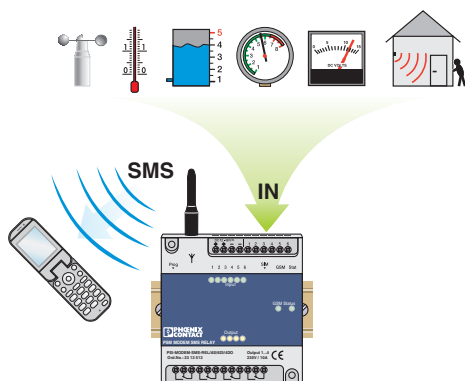
Surge protection device - CSMA-LAMBDA/4-2.0-BS-SET - 2800491



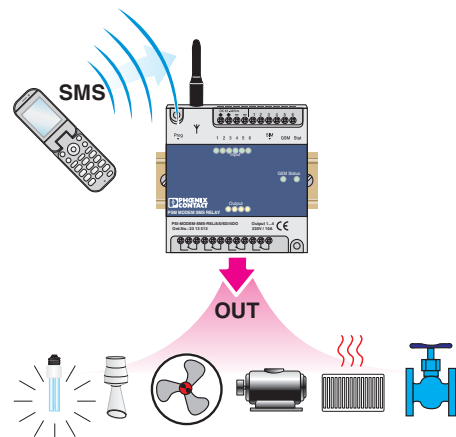
Attachment plug with Lambda/4 technology as surge protection for coaxial signal interfaces. Connection: Male/female SMA connectors.

Drawings

Application drawing



Application drawing



Signaling system - PSI-MODEM-SMS-REL/6ADI/4DO/DC - 2313520

Dimensioned drawing

