

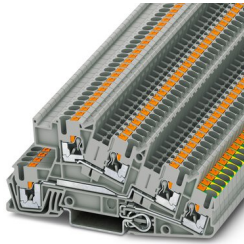
# PTI 2,5-PE/L/L - Installation ground terminal block



3213949

<https://www.phoenixcontact.com/de/produkte/3213949>

Please be informed that the data shown in this PDF document is generated from our Online Catalog. Please find the complete data in the user documentation. Our General Terms of Use for Downloads are valid.



Installation ground terminal block, nom. voltage: 400 V, nominal current: 24 A, Push-in connection, 1st, 2nd and 3rd level, Rated cross section: 4 mm<sup>2</sup>, cross section: 0.14 mm<sup>2</sup> - 4 mm<sup>2</sup>, mounting type: NS 35/7,5, NS 35/15, color: gray

## Your advantages

- Double function shafts on all levels

## Commercial Data

Item number	3213949
Packing unit	50 pc
Minimum order quantity	50 pc
Sales Key	A1 - Reihenklemmen
Product Key	BE2253
Catalog Page	Page 91 (C-1-2019)
GTIN	4046356609630
Weight per Piece (including packing)	17,59 g
Weight per Piece (excluding packing)	17,02 g
Customs tariff number	85369010
Country of origin	DE

## Technical Data

### Product properties

Product type	Installation terminal block
Number of connections	5
Number of rows	3
Potentials	2

### Insulation characteristics

Overvoltage category	III
Degree of pollution	3

### Electrical properties

Rated surge voltage	4 kV
Maximum power dissipation for nominal condition	1.02 W

### Connection data

Grounding foot	Yes
Number of connections per level	2
Nominal cross section	4 mm <sup>2</sup>

#### 1st, 2nd and 3rd level

Note	Please observe the current carrying capacity of the DIN rails.
Stripping length	8 mm ... 10 mm
Internal cylindrical gage	A3
Conductor cross section rigid	0.14 mm <sup>2</sup> ... 4 mm <sup>2</sup>
Cross section AWG	26 ... 12 (converted acc. to IEC)
Conductor cross section flexible	0.14 mm <sup>2</sup> ... 4 mm <sup>2</sup>
Conductor cross section, flexible [AWG]	26 ... 12 (converted acc. to IEC)
Conductor cross-section flexible (ferrule without plastic sleeve)	0.14 mm <sup>2</sup> ... 2.5 mm <sup>2</sup>
Flexible conductor cross section (ferrule with plastic sleeve)	0.14 mm <sup>2</sup> ... 2.5 mm <sup>2</sup>
Nominal current	24 A (with 4 mm <sup>2</sup> conductor cross section)
Maximum load current	30 A (with 4 mm <sup>2</sup> conductor cross section and 3-pos. terminal block)
Nominal voltage	400 V (phase conductor/phase conductor) 250 V (phase conductor/PE)
Nominal cross section	4 mm <sup>2</sup>

#### 1st, 2nd and 3rd level Connection cross sections directly pluggable

Conductor cross section rigid	0.34 mm <sup>2</sup> ... 4 mm <sup>2</sup>
Conductor cross-section flexible (ferrule without plastic sleeve)	0.34 mm <sup>2</sup> ... 2.5 mm <sup>2</sup>
Flexible conductor cross section (ferrule with plastic sleeve)	0.34 mm <sup>2</sup> ... 2.5 mm <sup>2</sup>

### Dimensions

Width	5.2 mm
-------	--------

# PTI 2,5-PE/L/L - Installation ground terminal block



3213949

<https://www.phoenixcontact.com/de/produkte/3213949>

End cover width	2.2 mm
Height	48.6 mm
Height NS 35/15	58 mm
Height NS 35/7,5	50.5 mm
Length	101 mm

## Material specifications

Color	gray
Flammability rating according to UL 94	V0
Insulating material group	I
Insulating material	PA
Static insulating material application in cold	-60 °C
Temperature index of insulation material (DIN EN 60216-1 (VDE 0304-21))	125 °C
Relative insulation material temperature index (Elec., UL 746 B)	130 °C
Fire protection for rail vehicles (DIN EN 45545-2) R22	HL 1 - HL 3
Fire protection for rail vehicles (DIN EN 45545-2) R23	HL 1 - HL 3
Fire protection for rail vehicles (DIN EN 45545-2) R24	HL 1 - HL 3
Fire protection for rail vehicles (DIN EN 45545-2) R26	HL 1 - HL 3
Calorimetric heat release NFPA 130 (ASTM E 1354)	27,5 MJ/kg
Surface flammability NFPA 130 (ASTM E 162)	passed
Specific optical density of smoke NFPA 130 (ASTM E 662)	passed
Smoke gas toxicity NFPA 130 (SMP 800C)	passed

## Mechanical properties

### Mechanical data

Open side panel	Yes
-----------------	-----

## Environmental and real-life conditions

### Oscillation/broadband noise

Specification	DIN EN 50155 (VDE 0115-200):2008-03
Spectrum	Service life test category 1, class B, body mounted
Frequency	$f_1 = 5 \text{ Hz}$ to $f_2 = 150 \text{ Hz}$
ASD level	0.964 (m/s <sup>2</sup> )/Hz
Acceleration	0.58g
Test duration per axis	5 h
Test directions	X-, Y- and Z-axis
Result	Test passed

### Shocks

Specification	DIN EN 50155 (VDE 0115-200):2008-03
Pulse shape	Half-sine
Acceleration	5g
Shock duration	30 ms

# PTI 2,5-PE/L/L - Installation ground terminal block



3213949

<https://www.phoenixcontact.com/de/produkte/3213949>

Number of shocks per direction	3
Test directions	X-, Y- and Z-axis (pos. and neg.)
Result	Test passed

## Ambient conditions

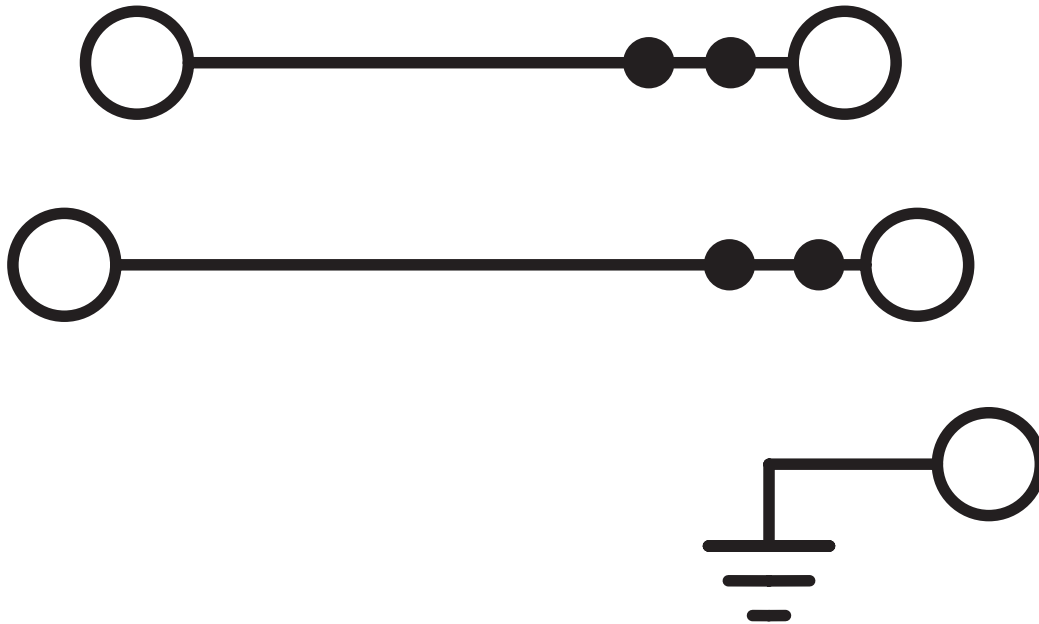
Ambient temperature (operation)	-60 °C ... 105 °C (max. short-term operating temperature RTI Elec.)
Ambient temperature (storage/transport)	-25 °C ... 60 °C (for a short time, not exceeding 24 h, -60 °C to +70 °C)
Ambient temperature (assembly)	-5 °C ... 70 °C
Permissible humidity (storage/transport)	30 % ... 70 %

## Mounting

Mounting type	NS 35/7,5
	NS 35/15

## Drawings

Circuit diagram




# PTI 2,5-PE/L/L - Installation ground terminal block





3213949


<https://www.phoenixcontact.com/de/produkte/3213949>

## Approvals


 <b>CSA</b> Approval ID: 13631				
	Nominal Voltage $U_N$	Nominal Current $I_N$	Cross Section AWG	Cross Section $\text{mm}^2$
Use group B	300 V	20 A	26 - 12	-
Use group C	150 V	20 A	26 - 12	-
Use group D	300 V	10 A	26 - 12	-


 <b>IECEE CB Scheme</b> Approval ID: DE1-62955				
--	--	--	--	--

 <b>EAC</b> Approval ID: RU C-DE.BL08.B.00644				
---	--	--	--	--

 <b>cULus Recognized</b> Approval ID: E60425				
--	--	--	--	--

 <b>LR</b> Approval ID: LR2002908TA				
---	--	--	--	--

 <b>VDE Zeichengenehmigung</b> Approval ID: 40037480				
--	--	--	--	--

 <b>cULus Recognized</b> Approval ID: E60425				
--	--	--	--	--

# PTI 2,5-PE/L/L - Installation ground terminal block



3213949

<https://www.phoenixcontact.com/de/produkte/3213949>

## Classifications

### ECLASS

ECLASS-11.0	27141125
ECLASS-12.0	27141125
ECLASS-13.0	27250110

### ETIM

ETIM 8.0	EC001329
----------	----------

### UNSPSC

UNSPSC 21.0	39121400
-------------	----------

# PTI 2,5-PE/L/L - Installation ground terminal block



3213949

<https://www.phoenixcontact.com/de/produkte/3213949>

## Environmental Product Compliance

China RoHS

Environmentally friendly use period: unlimited = EFUP-e

No hazardous substances above threshold values



# PTI 2,5-PE/L/L - Installation ground terminal block

3213949

<https://www.phoenixcontact.com/de/produkte/3213949>

## Accessories

**i** Note: Applying some accessories below might limit this product.

### FBS 2-5 - Plug-in bridge

3030161

<https://www.phoenixcontact.com/de/produkte/3030161>



Plug-in bridge, pitch: 5.2 mm, number of positions: 2, length: 23 mm, color: red

**i** Max. current carrying capacity: 24 A

---

### FBS 3-5 - Plug-in bridge

3030174

<https://www.phoenixcontact.com/de/produkte/3030174>



Plug-in bridge, pitch: 5.2 mm, number of positions: 3, length: 23 mm, color: red

**i** Max. current carrying capacity: 24 A

# PTI 2,5-PE/L/L - Installation ground terminal block

3213949

<https://www.phoenixcontact.com/de/produkte/3213949>

## FBS 4-5 - Plug-in bridge

3030187

<https://www.phoenixcontact.com/de/produkte/3030187>



Plug-in bridge, pitch: 5.2 mm, number of positions: 4, length: 23 mm, color: red

 Max. current carrying capacity: 24 A

---

## FBS 5-5 - Plug-in bridge

3030190

<https://www.phoenixcontact.com/de/produkte/3030190>



Plug-in bridge, pitch: 5.2 mm, number of positions: 5, length: 23 mm, color: red

 Max. current carrying capacity: 24 A

# PTI 2,5-PE/L/L - Installation ground terminal block

3213949

<https://www.phoenixcontact.com/de/produkte/3213949>

## FBS 10-5 - Plug-in bridge

3030213

<https://www.phoenixcontact.com/de/produkte/3030213>



Plug-in bridge, pitch: 5.2 mm, number of positions: 10, length: 23 mm, color: red

 Max. current carrying capacity: 24 A

---

## FBS 20-5 - Plug-in bridge

3030226

<https://www.phoenixcontact.com/de/produkte/3030226>



Plug-in bridge, pitch: 5.2 mm, number of positions: 20, color: red

 Max. current carrying capacity: 24 A

# PTI 2,5-PE/L/L - Installation ground terminal block

3213949

<https://www.phoenixcontact.com/de/produkte/3213949>

## FBS 50-5 - Plug-in bridge

3038930

<https://www.phoenixcontact.com/de/produkte/3038930>



Plug-in bridge, pitch: 5.2 mm, number of positions: 50, color: red

 Max. current carrying capacity: 24 A

The nominal voltage of the jumper is 400 V

---


## FBSR 2-5 - Plug-in bridge

3033702

<https://www.phoenixcontact.com/de/produkte/3033702>



Plug-in bridge, pitch: 5.2 mm, number of positions: 2, color: red

 Max. current carrying capacity: 17.5 A

# PTI 2,5-PE/L/L - Installation ground terminal block

3213949

<https://www.phoenixcontact.com/de/produkte/3213949>


## FBSR 3-5 - Plug-in bridge

3001591

<https://www.phoenixcontact.com/de/produkte/3001591>



Plug-in bridge, pitch: 5.2 mm, number of positions: 3, color: red

 Max. current carrying capacity: 17.5 A

---

## FBSR 4-5 - Plug-in bridge

3001592

<https://www.phoenixcontact.com/de/produkte/3001592>



Plug-in bridge, pitch: 5.2 mm, number of positions: 4, color: red

 Max. current carrying capacity: 17.5 A

---

# PTI 2,5-PE/L/L - Installation ground terminal block

3213949

<https://www.phoenixcontact.com/de/produkte/3213949>


## FBSR 5-5 - Plug-in bridge

3001593

<https://www.phoenixcontact.com/de/produkte/3001593>



Plug-in bridge, pitch: 5.2 mm, number of positions: 5, color: red

 Max. current carrying capacity: 17.5 A

---

## FBSR 10-5 - Plug-in bridge

3033710

<https://www.phoenixcontact.com/de/produkte/3033710>



Plug-in bridge, pitch: 5.2 mm, number of positions: 10, color: red

 Max. current carrying capacity: 17.5 A

# PTI 2,5-PE/L/L - Installation ground terminal block

3213949

<https://www.phoenixcontact.com/de/produkte/3213949>

## FBS 2-5 BU - Plug-in bridge

3036877

<https://www.phoenixcontact.com/de/produkte/3036877>



Plug-in bridge, pitch: 5.2 mm, number of positions: 2, color: blue

 Max. current carrying capacity: 24 A

---

## FBS 3-5 BU - Plug-in bridge

3036880

<https://www.phoenixcontact.com/de/produkte/3036880>



Plug-in bridge, pitch: 5.2 mm, number of positions: 3, color: blue

 Max. current carrying capacity: 24 A

# PTI 2,5-PE/L/L - Installation ground terminal block

3213949

<https://www.phoenixcontact.com/de/produkte/3213949>

## FBS 4-5 BU - Plug-in bridge

3036893

<https://www.phoenixcontact.com/de/produkte/3036893>



Plug-in bridge, pitch: 5.2 mm, number of positions: 4, color: blue

 Max. current carrying capacity: 24 A

---

## FBS 5-5 BU - Plug-in bridge

3036903

<https://www.phoenixcontact.com/de/produkte/3036903>



Plug-in bridge, pitch: 5.2 mm, number of positions: 5, color: blue

 Max. current carrying capacity: 24 A



# PTI 2,5-PE/L/L - Installation ground terminal block

3213949

<https://www.phoenixcontact.com/de/produkte/3213949>

## FBS 10-5 BU - Plug-in bridge

3036916

<https://www.phoenixcontact.com/de/produkte/3036916>



Plug-in bridge, pitch: 5.2 mm, number of positions: 10, color: blue

 Max. current carrying capacity: 24 A

---

## FBS 20-5 BU - Plug-in bridge

3036929

<https://www.phoenixcontact.com/de/produkte/3036929>



Plug-in bridge, pitch: 5.2 mm, number of positions: 20, color: blue

 Max. current carrying capacity: 24 A

# PTI 2,5-PE/L/L - Installation ground terminal block

3213949

<https://www.phoenixcontact.com/de/produkte/3213949>

## FBS 50-5 BU - Plug-in bridge

3032114

<https://www.phoenixcontact.com/de/produkte/3032114>



Plug-in bridge, pitch: 5.2 mm, number of positions: 50, color: blue

 Max. current carrying capacity: 24 A

---

## D-PTI/3 - End cover

3213975

<https://www.phoenixcontact.com/de/produkte/3213975>

End cover, length: 101 mm, width: 2.2 mm, height: 48.2 mm, color: gray



# PTI 2,5-PE/L/L - Installation ground terminal block



3213949

<https://www.phoenixcontact.com/de/produkte/3213949>

## SZF 1-0,6X3,5 - Screwdriver

1204517

<https://www.phoenixcontact.com/de/produkte/1204517>



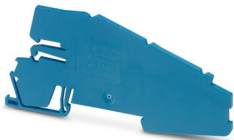
Actuation tool, for ST terminal blocks, also suitable for use as a bladed screwdriver, size: 0.6 x 3.5 x 100 mm, 2-component grip, with non-slip grip

---

## AB-PTI/3 - Support bracket

3213974

<https://www.phoenixcontact.com/de/produkte/3213974>



Support bracket, Bracket for busbars, set every 20 cm, pitch: 200 mm, length: 103 mm, width: 2 mm, height: 46 mm, number of positions: 1, color: blue

# PTI 2,5-PE/L/L - Installation ground terminal block

3213949

<https://www.phoenixcontact.com/de/produkte/3213949>

## ATP-PTI/3 - Partition plate

3213990

<https://www.phoenixcontact.com/de/produkte/3213990>

Partition plate, length: 103 mm, width: 2.2 mm, height: 49.3 mm, color: gray



---

## PT-IL - Mounting material

3208090

<https://www.phoenixcontact.com/de/produkte/3208090>

Operating decal for the push-in Technology



# PTI 2,5-PE/L/L - Installation ground terminal block

3213949

<https://www.phoenixcontact.com/de/produkte/3213949>

## ST-BW - Actuation tool

1207608

<https://www.phoenixcontact.com/de/produkte/1207608>

Actuation tool, for all 2.5 mm<sup>2</sup> - 4.0 mm<sup>2</sup> spring-cages



---

## CEC 2,5 - Filler plugs

3062757

<https://www.phoenixcontact.com/de/produkte/3062757>

Cover for conductor shaft, 10-pos., for spring cage terminal blocks (ST) and terminal blocks with push-in technology (PT) with a width of 5.2 mm



# PTI 2,5-PE/L/L - Installation ground terminal block

3213949

<https://www.phoenixcontact.com/de/produkte/3213949>

## WS PT 2,5 - Warning label

1029026

<https://www.phoenixcontact.com/de/produkte/1029026>



Warning label, yellow/black, labeled: Lightning flash, mounting type: plug in, for terminal block width: 5.2 mm

---

## WS-DIO PT 2,5 - Warning label

1029037

<https://www.phoenixcontact.com/de/produkte/1029037>



Warning label, yellow/black, labeled: Diode, mounting type: plug in, for terminal block width: 5.2 mm

# PTI 2,5-PE/L/L - Installation ground terminal block

3213949

<https://www.phoenixcontact.com/de/produkte/3213949>

## NLS-CU 3/10 SN 1000MM - Neutral busbar

0402174

<https://www.phoenixcontact.com/de/produkte/0402174>



Neutral busbar, DIN VDE 0611-4: 1991-02, material: Copper, tin-plated, color: silver

---

## AP-NLS N - Cover profile

1013634

<https://www.phoenixcontact.com/de/produkte/1013634>



Cover profile, length: 300 mm, color: transparent

# PTI 2,5-PE/L/L - Installation ground terminal block

3213949

<https://www.phoenixcontact.com/de/produkte/3213949>

## NS 35/ 7,5 PERF 2000MM - DIN rail perforated

0801733

<https://www.phoenixcontact.com/de/produkte/0801733>



DIN rail perforated, acc. to EN 60715, material: Steel, galvanized, passivated with a thick layer, Standard profile, color: silver, Pack of 25 (50 m)

---

## NS 35/ 7,5 UNPERF 2000MM - DIN rail, unperforated

0801681

<https://www.phoenixcontact.com/de/produkte/0801681>



DIN rail, unperforated, acc. to EN 60715, material: Steel, galvanized, passivated with a thick layer, Standard profile, color: silver, Pack of 25 (50 m)



# PTI 2,5-PE/L/L - Installation ground terminal block

3213949

<https://www.phoenixcontact.com/de/produkte/3213949>

## NS 35/ 7,5 WH PERF 2000MM - DIN rail perforated

1204119

<https://www.phoenixcontact.com/de/produkte/1204119>



DIN rail perforated, acc. to EN 60715, material: Steel, Galvanized, white passivated, Standard profile, color: silver, Pack of 25 (50 m)

---

## NS 35/ 7,5 WH UNPERF 2000MM-VPE 10 - DIN rail, unperforated

1204122

<https://www.phoenixcontact.com/de/produkte/1204122>



DIN rail, unperforated, acc. to EN 60715, material: Steel, Galvanized, white passivated, Standard profile, color: silver, Pack of 10 (20 m)

# PTI 2,5-PE/L/L - Installation ground terminal block

3213949

<https://www.phoenixcontact.com/de/produkte/3213949>

## NS 35/ 7,5 AL UNPERF 2000MM - DIN rail, unperforated

0801704

<https://www.phoenixcontact.com/de/produkte/0801704>



DIN rail, unperforated, acc. to EN 60715, material: Aluminum, uncoated, Standard profile, color: silver, Pack of 25 (50 m)

---

## NS 35/ 7,5 ZN PERF 2000MM - DIN rail perforated

1206421

<https://www.phoenixcontact.com/de/produkte/1206421>



DIN rail perforated, acc. to EN 60715, material: Steel, galvanized, Standard profile, color: silver, Pack of 25 (50 m)

# PTI 2,5-PE/L/L - Installation ground terminal block

3213949

<https://www.phoenixcontact.com/de/produkte/3213949>

## NS 35/ 7,5 ZN UNPERF 2000MM - DIN rail, unperforated

1206434

<https://www.phoenixcontact.com/de/produkte/1206434>



DIN rail, unperforated, acc. to EN 60715, material: Steel, galvanized, Standard profile, color: silver, Pack of 25 (50 m)

---

## NS 35/ 7,5 CU UNPERF 2000MM-VPE 10 - DIN rail, unperforated

0801762

<https://www.phoenixcontact.com/de/produkte/0801762>



DIN rail, unperforated, acc. to EN 60715, material: Copper, uncoated, Standard profile, color: copper-colored, Pack of 10 (20 m)

# PTI 2,5-PE/L/L - Installation ground terminal block

3213949

<https://www.phoenixcontact.com/de/produkte/3213949>

## NS 35/ 7,5 CAP - End cap

1206560

<https://www.phoenixcontact.com/de/produkte/1206560>

DIN rail end piece, for DIN rail NS 35/7.5



---

## NS 35/15 PERF 2000MM - DIN rail perforated

1201730

<https://www.phoenixcontact.com/de/produkte/1201730>



DIN rail perforated, similar to EN 60715, material: Steel, galvanized, passivated with a thick layer, Standard profile, color: silver, Pack of 25 (50 m)

# PTI 2,5-PE/L/L - Installation ground terminal block

3213949

<https://www.phoenixcontact.com/de/produkte/3213949>

## NS 35/15 UNPERF 2000MM - DIN rail, unperforated

1201714

<https://www.phoenixcontact.com/de/produkte/1201714>



DIN rail, unperforated, similar to EN 60715, material: Steel, galvanized, passivated with a thick layer, Standard profile, color: silver, Pack of 25 (50 m)

---

## NS 35/15 WH PERF 2000MM - DIN rail perforated

0806602

<https://www.phoenixcontact.com/de/produkte/0806602>



DIN rail perforated, similar to EN 60715, material: Steel, Galvanized, white passivated, Standard profile, color: white, Pack of 25 (50 m)

# PTI 2,5-PE/L/L - Installation ground terminal block

3213949

<https://www.phoenixcontact.com/de/produkte/3213949>

## NS 35/15 WH UNPERF 2000MM-VPE 10 - DIN rail, unperforated

1204135

<https://www.phoenixcontact.com/de/produkte/1204135>



DIN rail, unperforated, similar to EN 60715, material: Steel, Galvanized, white passivated, Standard profile, color: silver, Pack of 10 (20 m)

---

## NS 35/15 AL UNPERF 2000MM - DIN rail, unperforated

1201756

<https://www.phoenixcontact.com/de/produkte/1201756>



DIN rail, unperforated, similar to EN 60715, material: Aluminum, uncoated, Standard profile, color: silver

# PTI 2,5-PE/L/L - Installation ground terminal block

3213949

<https://www.phoenixcontact.com/de/produkte/3213949>

## NS 35/15 ZN PERF 2000MM - DIN rail perforated

1206599

<https://www.phoenixcontact.com/de/produkte/1206599>



DIN rail perforated, similar to EN 60715, material: Steel, galvanized, Standard profile, color: silver, Pack of 25 (50 m)

---

## NS 35/15 ZN UNPERF 2000MM - DIN rail, unperforated

1206586

<https://www.phoenixcontact.com/de/produkte/1206586>



DIN rail, unperforated, similar to EN 60715, material: Steel, galvanized, Standard profile, color: silver, Pack of 25 (50 m)

# PTI 2,5-PE/L/L - Installation ground terminal block



3213949

<https://www.phoenixcontact.com/de/produkte/3213949>

## NS 35/15 CU UNPERF 2000MM-VPE 10 - DIN rail, unperforated

1201895

<https://www.phoenixcontact.com/de/produkte/1201895>



DIN rail, unperforated, similar to EN 60715, material: Copper, uncoated, Standard profile, color: copper-colored, Pack of 10 (20 m)

---

## NS 35/15 CAP - End cap

1206573

<https://www.phoenixcontact.com/de/produkte/1206573>

DIN rail end piece, for DIN rail NS 35/15





# PTI 2,5-PE/L/L - Installation ground terminal block

3213949

<https://www.phoenixcontact.com/de/produkte/3213949>

## NS 35/15-2,3 UNPERF 2000MM-VPE 10 - DIN rail, unperforated

1201798

<https://www.phoenixcontact.com/de/produkte/1201798>



DIN rail, unperforated, acc. to EN 60715, material: Steel, galvanized, passivated with a thick layer, Standard profile 2.3 mm, color: silver, Pack of 10 (20 m)

---

## ZBF 5:UNBEDRUCKT - Zack Marker strip, flat

0808642

<https://www.phoenixcontact.com/de/produkte/0808642>



Zack Marker strip, flat, Strip, white, unlabeled, can be labeled with: PLOTMARK, CMS-P1-PLOTTER, mounting type: snapped, for terminal block width: 5 mm, lettering field size: 5.1 x 5.2 mm, Number of individual labels: 10

# PTI 2,5-PE/L/L - Installation ground terminal block

3213949

<https://www.phoenixcontact.com/de/produkte/3213949>

## ZBF 5 CUS - Zack Marker strip, flat

0825025

<https://www.phoenixcontact.com/de/produkte/0825025>



Zack Marker strip, flat, can be ordered: Strip, white, labeled according to customer specifications, mounting type: snap into flat marker groove, for terminal block width: 5 mm, lettering field size: 5.15 x 5.15 mm, Number of individual labels: 10

---

## ZBF 5,LGS:FORTL.ZAHLEN - Zack Marker strip, flat

0808671

<https://www.phoenixcontact.com/de/produkte/0808671>



Zack Marker strip, flat, Strip, white, labeled, printed horizontally: consecutive numbers 1 ... 10, 11 ... 20, etc. up to 491 ... 500, mounting type: snapped, for terminal block width: 5 mm, lettering field size: 5.15 x 5.15 mm, Number of individual labels: 10

# PTI 2,5-PE/L/L - Installation ground terminal block



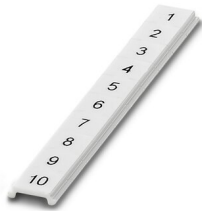
3213949

<https://www.phoenixcontact.com/de/produkte/3213949>

## ZBF 5,QR:FORTL.ZAHLEN - Zack Marker strip, flat

0808697

<https://www.phoenixcontact.com/de/produkte/0808697>



Zack Marker strip, flat, Strip, white, labeled, Printed vertically: consecutive numbers 1 ... 10, 11 ... 20, etc. up to 91 ... 100, mounting type: snapped, for terminal block width: 5 mm, lettering field size: 5.15 x 5.15 mm, Number of individual labels: 10

---

## ZBF 5,LGS:GERADE ZAHLEN - Zack Marker strip, flat

0810821

<https://www.phoenixcontact.com/de/produkte/0810821>



Zack Marker strip, flat, Strip, white, labeled, printed horizontally: consecutive even numbers 2 ... 20, 22 ... 40, etc. up to 82 ... 100, mounting type: snapped, for terminal block width: 5 mm, lettering field size: 5.15 x 5.15 mm, Number of individual labels: 10

# PTI 2,5-PE/L/L - Installation ground terminal block



3213949

<https://www.phoenixcontact.com/de/produkte/3213949>

## ZBF 5,LGS:UNGERADE ZAHLEN - Zack Marker strip, flat

0810863

<https://www.phoenixcontact.com/de/produkte/0810863>



Zack Marker strip, flat, Strip, white, labeled, printed horizontally: Odd numbers 1 - 19, 21 - 39, etc. up to 81 - 99, mounting type: snapped, for terminal block width: 5 mm, lettering field size: 5.15 x 5.15 mm, Number of individual labels: 10

---

## UC-TMF 5 - Marker for terminal blocks

0818153

<https://www.phoenixcontact.com/de/produkte/0818153>



Marker for terminal blocks, Sheet, white, unlabeled, can be labeled with: BLUEMARK ID COLOR, BLUEMARK ID, BLUEMARK CLED, PLOTMARK, CMS-P1-PLOTTER, mounting type: snapped, for terminal block width: 5.2 mm, lettering field size: 4.6 x 5.1 mm, Number of individual labels: 96

# PTI 2,5-PE/L/L - Installation ground terminal block

3213949

<https://www.phoenixcontact.com/de/produkte/3213949>

## UC-TMF 5 CUS - Marker for terminal blocks

0824638

<https://www.phoenixcontact.com/de/produkte/0824638>



Marker for terminal blocks, can be ordered: by sheet, white, labeled according to customer specifications, mounting type: snap into flat marker groove, for terminal block width: 5.2 mm, lettering field size: 4.6 x 5.1 mm, Number of individual labels: 96

---

## UCT-TMF 5 - Marker for terminal blocks

0828744

<https://www.phoenixcontact.com/de/produkte/0828744>



Marker for terminal blocks, Sheet, white, unlabeled, can be labeled with: TOPMARK NEO, TOPMARK LASER, BLUEMARK ID COLOR, BLUEMARK ID, BLUEMARK CLED, THERMOMARK PRIME, THERMOMARK CARD 2.0, THERMOMARK CARD, mounting type: snapped, for terminal block width: 5.2 mm, lettering field size: 4.4 x 4.7 mm, Number of individual labels: 72

## PTI 2,5-PE/L/L - Installation ground terminal block

3213949

<https://www.phoenixcontact.com/de/produkte/3213949>



## UCT-TMF 5 CUS - Marker for terminal blocks

0829658

<https://www.phoenixcontact.com/de/produkte/0829658>



Marker for terminal blocks, can be ordered: by sheet, white, labeled according to customer specifications, mounting type: snap into flat marker groove, for terminal block width: 5.2 mm, lettering field size: 4.4 x 4.7 mm, Number of individual labels: 72

---

## MPS-MT - Test plugs

0201744

<https://www.phoenixcontact.com/de/produkte/0201744>



Test plugs, with solder connection up to 1 mm<sup>2</sup> conductor cross section, number of positions: 1, color: gray

# PTI 2,5-PE/L/L - Installation ground terminal block

3213949

<https://www.phoenixcontact.com/de/produkte/3213949>

## MPS-IH WH - Insulating sleeve

0201663

<https://www.phoenixcontact.com/de/produkte/0201663>

Insulating sleeve, color: white



## MPS-IH RD - Insulating sleeve

0201676

<https://www.phoenixcontact.com/de/produkte/0201676>

Insulating sleeve, color: red



# PTI 2,5-PE/L/L - Installation ground terminal block

3213949

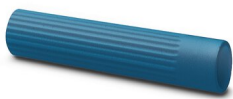
<https://www.phoenixcontact.com/de/produkte/3213949>

## MPS-IH BU - Insulating sleeve

0201689

<https://www.phoenixcontact.com/de/produkte/0201689>

Insulating sleeve, color: blue



## MPS-IH YE - Insulating sleeve

0201692

<https://www.phoenixcontact.com/de/produkte/0201692>

Insulating sleeve, color: yellow





# PTI 2,5-PE/L/L - Installation ground terminal block

3213949

<https://www.phoenixcontact.com/de/produkte/3213949>

## MPS-IH GN - Insulating sleeve

0201702

<https://www.phoenixcontact.com/de/produkte/0201702>

Insulating sleeve, color: green



---

## MPS-IH GY - Insulating sleeve

0201728

<https://www.phoenixcontact.com/de/produkte/0201728>

Insulating sleeve, color: gray



# PTI 2,5-PE/L/L - Installation ground terminal block

3213949

<https://www.phoenixcontact.com/de/produkte/3213949>

## MPS-IH BK - Insulating sleeve

0201731

<https://www.phoenixcontact.com/de/produkte/0201731>

Insulating sleeve, color: black



---

## ISH 2,5/0,2 - Insulating sleeve

3002843

<https://www.phoenixcontact.com/de/produkte/3002843>

Insulating sleeve, color: white



# PTI 2,5-PE/L/L - Installation ground terminal block

3213949

<https://www.phoenixcontact.com/de/produkte/3213949>

## ISH 2,5/0,5 - Insulating sleeve

3002856

<https://www.phoenixcontact.com/de/produkte/3002856>



Insulating sleeve, color: gray

---

## ISH 2,5/1,0 - Insulating sleeve

3002869

<https://www.phoenixcontact.com/de/produkte/3002869>



Insulating sleeve, color: black

# PTI 2,5-PE/L/L - Installation ground terminal block

3213949

<https://www.phoenixcontact.com/de/produkte/3213949>

## PAI-4-N GY - Test adapter

3032871

<https://www.phoenixcontact.com/de/produkte/3032871>



4 mm test adapter, for terminal blocks with 5.2 mm, 6.2 mm and 8.2 mm pitch

---

## PS-5 - Test plugs

3030983

<https://www.phoenixcontact.com/de/produkte/3030983>



Test plugs, Modular test plug, number of positions: 1, color: red

# PTI 2,5-PE/L/L - Installation ground terminal block



3213949

<https://www.phoenixcontact.com/de/produkte/3213949>

## DP PS-5 - Spacer plate

3036725

<https://www.phoenixcontact.com/de/produkte/3036725>



Spacer plate, length: 22.4 mm, width: 5.2 mm, height: 29 mm, number of positions: 1, color: red

---

## PS-5/2,3MM RD - Test plugs

3038723

<https://www.phoenixcontact.com/de/produkte/3038723>



Test plugs, number of positions: 1, color: red

# PTI 2,5-PE/L/L - Installation ground terminal block



3213949

<https://www.phoenixcontact.com/de/produkte/3213949>

## PROJECT COMPLETE - Software

1050453

<https://www.phoenixcontact.com/de/produkte/1050453>



Intuitive planning and marking software for configuring terminal strips and for professional marking of marking materials for terminal blocks, conductors, cables, devices, and systems. The software is available for download

---

## CLIPFIX 35 - End clamp

3022218

<https://www.phoenixcontact.com/de/produkte/3022218>



Quick mounting end clamp for NS 35/7,5 DIN rail or NS 35/15 DIN rail, with marking option, width: 9.5 mm, color: gray

# PTI 2,5-PE/L/L - Installation ground terminal block

3213949

<https://www.phoenixcontact.com/de/produkte/3213949>

## CLIPFIX 35-5 - End clamp

3022276

<https://www.phoenixcontact.com/de/produkte/3022276>



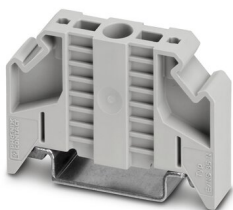
Quick mounting end clamp for NS 35/7,5 DIN rail or NS 35/15 DIN rail, with marking option, with parking option for FBS...5, FBS...6, KSS 5, KSS 6, width: 5.15 mm, color: gray

---

## E/NS 35 N - End clamp

0800886

<https://www.phoenixcontact.com/de/produkte/0800886>



End clamp, width: 9.5 mm, color: gray

# PTI 2,5-PE/L/L - Installation ground terminal block

3213949

<https://www.phoenixcontact.com/de/produkte/3213949>

## ZB 5 :UNBEDRUCKT - Zack marker strip

1050004

<https://www.phoenixcontact.com/de/produkte/1050004>



Zack marker strip, Strip, white, unlabeled, can be labeled with: PLOTMARK, CMS-P1-PLOTTER, mounting type: snapped, for terminal block width: 5.2 mm, lettering field size: 5.1 x 10.5 mm, Number of individual labels: 10

---

## ZB 5 CUS - Zack marker strip

0824962

<https://www.phoenixcontact.com/de/produkte/0824962>



Zack marker strip, can be ordered: Strip, white, labeled according to customer specifications, mounting type: snap into tall marker groove, for terminal block width: 5.2 mm, lettering field size: 5.15 x 10.5 mm, Number of individual labels: 10



# PTI 2,5-PE/L/L - Installation ground terminal block

3213949

<https://www.phoenixcontact.com/de/produkte/3213949>

## ZB 5,LGS:FORTL.ZAHLEN - Zack marker strip

1050017

<https://www.phoenixcontact.com/de/produkte/1050017>



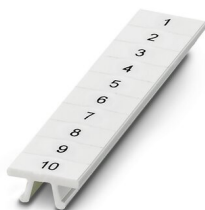
Zack marker strip, Strip, white, labeled, printed horizontally: consecutive numbers 1 ... 10, 11 ... 20, etc. up to 491 ... 500, mounting type: snapped, for terminal block width: 5.2 mm, lettering field size: 5.15 x 10.5 mm, Number of individual labels: 10

---

## ZB 5,QR:FORTL.ZAHLEN - Zack marker strip

1050020

<https://www.phoenixcontact.com/de/produkte/1050020>



Zack marker strip, white, Printed vertically: consecutive numbers 1 ... 10, 11 ... 20, etc. up to 491 ... 500, mounting type: snapped, for terminal block width: 5.2 mm, lettering field size: 5.15 x 10.5 mm

# PTI 2,5-PE/L/L - Installation ground terminal block

3213949

<https://www.phoenixcontact.com/de/produkte/3213949>

## ZB 5,LGS:GLEICHE ZAHLEN - Zack marker strip

1050033

<https://www.phoenixcontact.com/de/produkte/1050033>



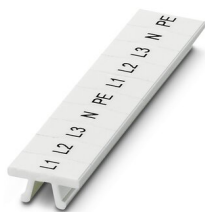
Zack marker strip, Strip, white, labeled, can be labeled with: CMS-P1-PLOTTER, printed horizontally: Identical numbers 1 or 2, etc. up to 100, mounting type: snapped, for terminal block width: 5.2 mm, lettering field size: 5.15 x 10.5 mm, Number of individual labels: 10

---

## ZB 5,LGS:L1-N,PE - Zack marker strip

1050415

<https://www.phoenixcontact.com/de/produkte/1050415>



Zack marker strip, Strip, white, labeled, horizontal: L1, L2, L3, N, PE, L1, L2, L3, N, PE, mounting type: snapped, for terminal block width: 5.2 mm, lettering field size: 5.15 x 10.5 mm, Number of individual labels: 10

# PTI 2,5-PE/L/L - Installation ground terminal block



3213949

<https://www.phoenixcontact.com/de/produkte/3213949>

## UC-TM 5 - Marker for terminal blocks

0818108

<https://www.phoenixcontact.com/de/produkte/0818108>



Marker for terminal blocks, Sheet, white, unlabeled, can be labeled with: BLUEMARK ID COLOR, BLUEMARK ID, BLUEMARK CLED, PLOTMARK, CMS-P1-PLOTTER, mounting type: snapped, for terminal block width: 5.2 mm, lettering field size: 4.6 x 10.5 mm, Number of individual labels: 96

---

## UC-TM 5 CUS - Marker for terminal blocks

0824581

<https://www.phoenixcontact.com/de/produkte/0824581>



Marker for terminal blocks, can be ordered: by sheet, white, labeled according to customer specifications, mounting type: snap into tall marker groove, for terminal block width: 5.2 mm, lettering field size: 10.5 x 4.6 mm, Number of individual labels: 96

# PTI 2,5-PE/L/L - Installation ground terminal block



3213949

<https://www.phoenixcontact.com/de/produkte/3213949>

## UCT-TM 5 - Marker for terminal blocks

0828734

<https://www.phoenixcontact.com/de/produkte/0828734>



Marker for terminal blocks, Sheet, white, unlabeled, can be labeled with: TOPMARK NEO, TOPMARK LASER, BLUEMARK ID COLOR, BLUEMARK ID, BLUEMARK CLED, THERMOMARK PRIME, THERMOMARK CARD 2.0, THERMOMARK CARD, mounting type: snapped, for terminal block width: 5.2 mm, lettering field size: 4.6 x 10.5 mm, Number of individual labels: 72

---

## UCT-TM 5 CUS - Marker for terminal blocks

0829595

<https://www.phoenixcontact.com/de/produkte/0829595>



Marker for terminal blocks, can be ordered: by sheet, white, labeled according to customer specifications, mounting type: snap into tall marker groove, for terminal block width: 5.2 mm, lettering field size: 4.6 x 10.5 mm, Number of individual labels: 72

# PTI 2,5-PE/L/L - Installation ground terminal block

3213949

<https://www.phoenixcontact.com/de/produkte/3213949>

## GBS 5-25X12 - Group marker label for terminal marking

0810588

<https://www.phoenixcontact.com/de/produkte/0810588>



Group marker label, snaps onto terminal center for screw, spring-cage and quick connection terminal blocks, labeled with a 25 x 12 mm label or manually with the B-STIFT, in the foot part with ZB 5

---

## GBS 5-25X5 - Group marker label for terminal marking

0829126

<https://www.phoenixcontact.com/de/produkte/0829126>



Group marking label, can be snapped into terminal center for screw, spring-cage, push-in, and fast connection terminal blocks, can be labeled with a 24 x 4 mm label or manually using B-STIFT, in the foot part with ZB 5

# PTI 2,5-PE/L/L - Installation ground terminal block



3213949

<https://www.phoenixcontact.com/de/produkte/3213949>

## STP 5-2-ZB - Marker carriers

3037643

<https://www.phoenixcontact.com/de/produkte/3037643>



Marker carriers, snaps into ST 2,5 spring-cage terminal blocks, can be marked with UC-TM 5, UC-TMF 5, UCT-TM 5, UCT-TMF 5, ZB 5, or ZBF 5, gray, unlabeled, mounting type: plug in

---

Phoenix Contact 2023 © - all rights reserved

<https://www.phoenixcontact.com>

PHOENIX CONTACT Deutschland GmbH

Flachsmarktstraße 8

D-32825 Blomberg

+49 52 35/3-1 20 00

[info@phoenixcontact.de](mailto:info@phoenixcontact.de)