

# PTI 4-L/L - Installation level terminal block



3214052

<https://www.phoenixcontact.com/de/produkte/3214052>

Please be informed that the data shown in this PDF document is generated from our Online Catalog. Please find the complete data in the user documentation. Our General Terms of Use for Downloads are valid.



Installation level terminal block, nom. voltage: 400 V, nominal current: 28 A, Push-in connection, 1st, 2nd and 3rd level, Rated cross section: 4 mm<sup>2</sup>, cross section: 0.2 mm<sup>2</sup> - 6 mm<sup>2</sup>, Push-in connection, mounting type: NS 35/7,5, NS 35/15, color: gray

## Your advantages

- Compatible with all Phoenix Contact installation terminal blocks
- As well as the testing facility in the function shaft, each terminal point has a test contact
- Each terminal point can be clearly labeled and easily recognized in every terminal block mounting position
- Compact design tailored to distribution boards
- Double function shafts on all levels
- The new Push-in connection technology enables easy, direct insertion of solid and stranded conductors with ferrules with a cross section of 0.34 mm<sup>2</sup> or higher

## Commercial Data

Item number	3214052
Packing unit	50 pc
Minimum order quantity	1 pc
Sales Key	A1 - Reihenklemmen
Product Key	BE2253
Catalog Page	Page 109 (C-1-2019)
GTIN	4046356817820
Weight per Piece (including packing)	19,22 g
Weight per Piece (excluding packing)	17,86 g
Customs tariff number	85369010
Country of origin	PL

# PTI 4-L/L - Installation level terminal block



3214052

<https://www.phoenixcontact.com/de/produkte/3214052>

## Technical Data

### Product properties

Product type	Installation terminal block
Number of connections	4
Number of rows	3
Potentials	2

### Insulation characteristics

Overvoltage category	III
Degree of pollution	3

### Electrical properties

Rated surge voltage	6 kV
Maximum power dissipation for nominal condition	1.02 W

### Connection data

Number of connections per level	2
Nominal cross section	4 mm <sup>2</sup>

#### 1st, 2nd and 3rd level

Stripping length	10 mm ... 12 mm
Internal cylindrical gage	A4
Connection in acc. with standard	IEC 60947-7-1
Conductor cross section solid	0.2 mm <sup>2</sup> ... 6 mm <sup>2</sup>
Cross section AWG	24 ... 10 (converted acc. to IEC)
Conductor cross section flexible	0.2 mm <sup>2</sup> ... 6 mm <sup>2</sup>
Conductor cross section, flexible [AWG]	24 ... 10 (converted acc. to IEC)
Flexible conductor cross section flexible (ferrule, w/o plastic sleeve)	0.25 mm <sup>2</sup> ... 4 mm <sup>2</sup>
Flexible conductor cross section (ferrule with plastic sleeve)	0.25 mm <sup>2</sup> ... 4 mm <sup>2</sup>
2 conductors with the same cross section, flexible, with TWIN ferrule with plastic sleeve	0.5 mm <sup>2</sup> ... 1 mm <sup>2</sup>
Nominal current	28 A (with 4 mm <sup>2</sup> conductor cross section)
Maximum load current	32 A (with 6 mm <sup>2</sup> conductor cross section)
Nominal voltage	400 V
Nominal cross section	4 mm <sup>2</sup>
Stripping length	10 mm ... 12 mm
2 conductors with the same cross section, flexible, with TWIN ferrule with plastic sleeve	1 mm <sup>2</sup>

#### 1st, 2nd and 3rd level Connection cross sections directly pluggable

Conductor cross section solid	0.5 mm <sup>2</sup> ... 6 mm <sup>2</sup>
Flexible conductor cross section flexible (ferrule, w/o plastic sleeve)	0.5 mm <sup>2</sup> ... 4 mm <sup>2</sup>
Flexible conductor cross section (ferrule with plastic sleeve)	0.5 mm <sup>2</sup> ... 4 mm <sup>2</sup>

# PTI 4-L/L - Installation level terminal block



3214052

<https://www.phoenixcontact.com/de/produkte/3214052>

## Connection cross sections directly pluggable

Conductor cross section solid	0.5 mm <sup>2</sup> ... 6 mm <sup>2</sup>
Flexible conductor cross section flexible (ferrule, w/o plastic sleeve)	0.5 mm <sup>2</sup> ... 4 mm <sup>2</sup>
Flexible conductor cross section (ferrule with plastic sleeve)	0.5 mm <sup>2</sup> ... 4 mm <sup>2</sup>

## Dimensions

Width	6.2 mm
End cover width	2.2 mm
Height NS 35/15	58 mm
Height NS 35/7,5	50.5 mm
Length	114 mm

## Material specifications

Color	gray
Flammability rating according to UL 94	V0
Insulating material group	I
Insulating material	PA
Static insulating material application in cold	-60 °C
Temperature index of insulation material (DIN EN 60216-1 (VDE 0304-21))	130 °C
Relative insulation material temperature index (Elec., UL 746 B)	130 °C
Fire protection for rail vehicles (DIN EN 45545-2) R22	HL 1 - HL 3
Fire protection for rail vehicles (DIN EN 45545-2) R23	HL 1 - HL 3
Fire protection for rail vehicles (DIN EN 45545-2) R24	HL 1 - HL 3
Fire protection for rail vehicles (DIN EN 45545-2) R26	HL 1 - HL 3
Calorimetric heat release NFPA 130 (ASTM E 1354)	28 MJ/kg
Surface flammability NFPA 130 (ASTM E 162)	passed
Specific optical density of smoke NFPA 130 (ASTM E 662)	passed
Smoke gas toxicity NFPA 130 (SMP 800C)	passed

## Mechanical properties

### Mechanical data

Open side panel	Yes
-----------------	-----

## Environmental and real-life conditions

### Ambient conditions

Ambient temperature (operation)	-60 °C ... 105 °C (max. short-term operating temperature RTI Elec.)
Ambient temperature (storage/transport)	-25 °C ... 60 °C (for a short time, not exceeding 24 h, -60 °C to +70 °C)
Ambient temperature (assembly)	-5 °C ... 70 °C
Permissible humidity (storage/transport)	30 % ... 70 %

# PTI 4-L/L - Installation level terminal block



3214052

<https://www.phoenixcontact.com/de/produkte/3214052>

## Standards and regulations

Connection in acc. with standard
----------------------------------

IEC 60947-7-1
---------------

## Mounting

Mounting type
---------------

NS 35/7,5
-----------

NS 35/15
----------

# PTI 4-L/L - Installation level terminal block



3214052

<https://www.phoenixcontact.com/de/produkte/3214052>

## Drawings

Circuit diagram



# PTI 4-L/L - Installation level terminal block



3214052

<https://www.phoenixcontact.com/de/produkte/3214052>

## Approvals

<b>DNV</b> Approval ID: TAE00001BU				
	Nominal Voltage $U_N$	Nominal Current $I_N$	Cross Section AWG	Cross Section $mm^2$
			-	-

<b>CSA</b> Approval ID: 13631				
	Nominal Voltage $U_N$	Nominal Current $I_N$	Cross Section AWG	Cross Section $mm^2$
Use group B	300 V	27 A	20 - 8	-
Use group D	600 V	5 A	20 - 8	-

<b>IECEE CB Scheme</b> Approval ID: DE1-62955				
	Nominal Voltage $U_N$	Nominal Current $I_N$	Cross Section AWG	Cross Section $mm^2$
	400 V	28 A	-	0.2 - 6

<b>EAC</b> Approval ID: RU C-DE.AI30.B.01102				
---	--	--	--	--

<b>cULus Recognized</b> Approval ID: E60425				
	Nominal Voltage $U_N$	Nominal Current $I_N$	Cross Section AWG	Cross Section $mm^2$
Use group B	300 V	27 A	20 - 8	-
Use group D	300 V	10 A	20 - 8	-

<b>EAC</b> Approval ID: RU C-DE.BL08.B.00644				
---	--	--	--	--

<b>VDE Zeichengenehmigung</b> Approval ID: 40037480				
	Nominal Voltage $U_N$	Nominal Current $I_N$	Cross Section AWG	Cross Section $mm^2$
	400 V	28 A	-	0.2 - 6

# PTI 4-L/L - Installation level terminal block



3214052

<https://www.phoenixcontact.com/de/produkte/3214052>

## Classifications

### ECLASS

ECLASS-9.0	27141125
ECLASS-10.0.1	27141125
ECLASS-11.0	27141125
ECLASS-12.0	27141125
ECLASS-13.0	27250110

### ETIM

ETIM 8.0	EC001329
----------	----------

### UNSPSC

UNSPSC 21.0	39121400
-------------	----------

# PTI 4-L/L - Installation level terminal block



3214052

<https://www.phoenixcontact.com/de/produkte/3214052>

## Environmental Product Compliance

China RoHS	Environmentally friendly use period: unlimited = EFUP-e
	No hazardous substances above threshold values




# PTI 4-L/L - Installation level terminal block

3214052

<https://www.phoenixcontact.com/de/produkte/3214052>

## Accessories

 Note: Applying some accessories below might limit this product.


### FBS 20-6 - Plug-in bridge

3030365

<https://www.phoenixcontact.com/de/produkte/3030365>



Plug-in bridge, pitch: 6.2 mm, number of positions: 20, color: red

 Max. current carrying capacity: 32 A

---

### FBS 10-6 - Plug-in bridge

3030271

<https://www.phoenixcontact.com/de/produkte/3030271>



Plug-in bridge, pitch: 6.2 mm, number of positions: 10, color: red

 Max. current carrying capacity: 32 A

# PTI 4-L/L - Installation level terminal block

3214052

<https://www.phoenixcontact.com/de/produkte/3214052>


## FBS 5-6 - Plug-in bridge

3030349

<https://www.phoenixcontact.com/de/produkte/3030349>



Plug-in bridge, pitch: 6.2 mm, number of positions: 5, color: red

 Max. current carrying capacity: 32 A

---

## FBS 4-6 - Plug-in bridge

3030255

<https://www.phoenixcontact.com/de/produkte/3030255>



Plug-in bridge, pitch: 6.2 mm, number of positions: 4, color: red

 Max. current carrying capacity: 32 A

---

# PTI 4-L/L - Installation level terminal block

3214052

<https://www.phoenixcontact.com/de/produkte/3214052>




## FBS 3-6 - Plug-in bridge

3030242

<https://www.phoenixcontact.com/de/produkte/3030242>



Plug-in bridge, pitch: 6.2 mm, number of positions: 3, color: red

 Max. current carrying capacity: 32 A

---

## FBS 2-6 - Plug-in bridge

3030336

<https://www.phoenixcontact.com/de/produkte/3030336>



Plug-in bridge, pitch: 6.2 mm, number of positions: 2, color: red

 Max. current carrying capacity: 32 A

# PTI 4-L/L - Installation level terminal block

3214052

<https://www.phoenixcontact.com/de/produkte/3214052>



## FBS 6-6 - Plug-in bridge

1008238

<https://www.phoenixcontact.com/de/produkte/1008238>



Plug-in bridge, One side not fully isolated, pitch: 6.2 mm, number of positions: 6, color: red

 Max. current carrying capacity: 32 A

---


## FBS 50-6 - Plug-in bridge

3032224

<https://www.phoenixcontact.com/de/produkte/3032224>



Plug-in bridge, pitch: 6.2 mm, number of positions: 50, color: red

 Max. current carrying capacity: 32 A

# PTI 4-L/L - Installation level terminal block

3214052

<https://www.phoenixcontact.com/de/produkte/3214052>

## FBSR 2-6 - Plug-in bridge

3033715

<https://www.phoenixcontact.com/de/produkte/3033715>



Plug-in bridge, pitch: 6.2 mm, number of positions: 2, color: red

 Max. current carrying capacity: 24 A

---


## FBSR 3-6 - Plug-in bridge

3001594

<https://www.phoenixcontact.com/de/produkte/3001594>



Plug-in bridge, pitch: 6.2 mm, number of positions: 3, color: red

 Max. current carrying capacity: 24 A

---

# PTI 4-L/L - Installation level terminal block

3214052

<https://www.phoenixcontact.com/de/produkte/3214052>


## FBSR 4-6 - Plug-in bridge

3001595

<https://www.phoenixcontact.com/de/produkte/3001595>



Plug-in bridge, pitch: 6.2 mm, number of positions: 4, color: red

 Max. current carrying capacity: 24 A

---


## FBSR 5-6 - Plug-in bridge

3001596

<https://www.phoenixcontact.com/de/produkte/3001596>



Plug-in bridge, pitch: 6.2 mm, number of positions: 5, color: red

 Max. current carrying capacity: 24 A

---

# PTI 4-L/L - Installation level terminal block

3214052

<https://www.phoenixcontact.com/de/produkte/3214052>

## FBSR 10-6 - Plug-in bridge

3033716

<https://www.phoenixcontact.com/de/produkte/3033716>



Plug-in bridge, pitch: 6.2 mm, number of positions: 10, color: red

 Max. current carrying capacity: 24 A

---

## FBSRH 2-6 - Short-circuit connector

3033812

<https://www.phoenixcontact.com/de/produkte/3033812>



Short-circuit connector, pitch: 6.2 mm, number of positions: 2, color: red

 Max. current carrying capacity: 24 A

# PTI 4-L/L - Installation level terminal block

3214052

<https://www.phoenixcontact.com/de/produkte/3214052>


## FBS 2-6 BU - Plug-in bridge

3036932

<https://www.phoenixcontact.com/de/produkte/3036932>



Plug-in bridge, pitch: 6.2 mm, number of positions: 2, color: blue

 Max. current carrying capacity: 32 A

---


## FBS 3-6 BU - Plug-in bridge

3036945

<https://www.phoenixcontact.com/de/produkte/3036945>



Plug-in bridge, pitch: 6.2 mm, number of positions: 3, color: blue

 Max. current carrying capacity: 32 A

---



# PTI 4-L/L - Installation level terminal block

3214052

<https://www.phoenixcontact.com/de/produkte/3214052>




## FBS 4-6 BU - Plug-in bridge

3036958

<https://www.phoenixcontact.com/de/produkte/3036958>



Plug-in bridge, pitch: 6.2 mm, number of positions: 4, color: blue

 Max. current carrying capacity: 32 A

---


## FBS 5-6 BU - Plug-in bridge

3036961

<https://www.phoenixcontact.com/de/produkte/3036961>



Plug-in bridge, pitch: 6.2 mm, number of positions: 5, color: blue

 Max. current carrying capacity: 32 A

# PTI 4-L/L - Installation level terminal block

3214052

<https://www.phoenixcontact.com/de/produkte/3214052>


## FBS 10-6 BU - Plug-in bridge

3032198

<https://www.phoenixcontact.com/de/produkte/3032198>

Plug-in bridge, pitch: 6.2 mm, number of positions: 10, color: blue



 Max. current carrying capacity: 32 A

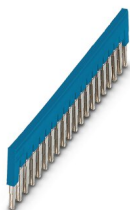
---

## FBS 20-6 BU - Plug-in bridge

3032208

<https://www.phoenixcontact.com/de/produkte/3032208>

Plug-in bridge, pitch: 6.2 mm, number of positions: 20, color: blue



 Max. current carrying capacity: 32 A

# PTI 4-L/L - Installation level terminal block

3214052

<https://www.phoenixcontact.com/de/produkte/3214052>


## FBS 50-6 BU - Plug-in bridge

3032211

<https://www.phoenixcontact.com/de/produkte/3032211>



Plug-in bridge, pitch: 6.2 mm, number of positions: 50, color: blue

 Max. current carrying capacity: 32 A

---

## D-PTI 4/3 - End cover

3214054

<https://www.phoenixcontact.com/de/produkte/3214054>

End cover, length: 114 mm, width: 2.2 mm, height: 48.2 mm, color: gray



# PTI 4-L/L - Installation level terminal block

3214052

<https://www.phoenixcontact.com/de/produkte/3214052>

## ATP-PTI/3 - Partition plate

3213990

<https://www.phoenixcontact.com/de/produkte/3213990>

Partition plate, length: 103 mm, width: 2.2 mm, height: 49.3 mm, color: gray



---

## SZF 1-0,6X3,5 - Screwdriver

1204517

<https://www.phoenixcontact.com/de/produkte/1204517>

Actuation tool, for ST terminal blocks, also suitable for use as a bladed screwdriver, size: 0.6 x 3.5 x 100 mm, 2-component grip, with non-slip grip



# PTI 4-L/L - Installation level terminal block



3214052

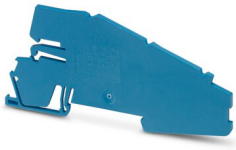
<https://www.phoenixcontact.com/de/produkte/3214052>

## AB-PTI 4/3 - Support bracket

3214053

<https://www.phoenixcontact.com/de/produkte/3214053>

Support bracket, Bracket for busbars, set every 20 cm, length: 116 mm, width: 2.2 mm, height: 46 mm, number of positions: 1, color: blue



---

## PT-IL - Mounting material

3208090

<https://www.phoenixcontact.com/de/produkte/3208090>

Operating decal for the push-in Technology



# PTI 4-L/L - Installation level terminal block

3214052

<https://www.phoenixcontact.com/de/produkte/3214052>

## ST-BW - Actuation tool

1207608

<https://www.phoenixcontact.com/de/produkte/1207608>



Actuation tool, for all 2.5 mm<sup>2</sup> - 4.0 mm<sup>2</sup> spring-cages

---

## NLS-CU 3/10 SN 1000MM - Neutral busbar

0402174

<https://www.phoenixcontact.com/de/produkte/0402174>



Neutral busbar, DIN VDE 0611-4: 1991-02, material: Copper, tin-plated, color: silver

# PTI 4-L/L - Installation level terminal block

3214052

<https://www.phoenixcontact.com/de/produkte/3214052>



## AP-NLS N - Cover profile

1013634

<https://www.phoenixcontact.com/de/produkte/1013634>



Cover profile, length: 300 mm, color: transparent

---

## NS 35/ 7,5 PERF 2000MM - DIN rail perforated

0801733

<https://www.phoenixcontact.com/de/produkte/0801733>



DIN rail perforated, acc. to EN 60715, material: Steel, galvanized, passivated with a thick layer, Standard profile, color: silver, Pack of 25 (50 m)

## PTI 4-L/L - Installation level terminal block

3214052

<https://www.phoenixcontact.com/de/produkte/3214052>



### NS 35/ 7,5 UNPERF 2000MM - DIN rail, unperforated

0801681

<https://www.phoenixcontact.com/de/produkte/0801681>



DIN rail, unperforated, acc. to EN 60715, material: Steel, galvanized, passivated with a thick layer, Standard profile, color: silver, Pack of 25 (50 m)

---

### NS 35/ 7,5 WH PERF 2000MM - DIN rail perforated

1204119

<https://www.phoenixcontact.com/de/produkte/1204119>



DIN rail perforated, acc. to EN 60715, material: Steel, Galvanized, white passivated, Standard profile, color: silver, Pack of 25 (50 m)



# PTI 4-L/L - Installation level terminal block

3214052

<https://www.phoenixcontact.com/de/produkte/3214052>

## NS 35/ 7,5 WH UNPERF 2000MM-VPE 10 - DIN rail, unperforated

1204122

<https://www.phoenixcontact.com/de/produkte/1204122>



DIN rail, unperforated, acc. to EN 60715, material: Steel, Galvanized, white passivated, Standard profile, color: silver, Pack of 10 (20 m)

---

## NS 35/ 7,5 AL UNPERF 2000MM - DIN rail, unperforated

0801704

<https://www.phoenixcontact.com/de/produkte/0801704>



DIN rail, unperforated, acc. to EN 60715, material: Aluminum, uncoated, Standard profile, color: silver, Pack of 25 (50 m)

# PTI 4-L/L - Installation level terminal block

3214052

<https://www.phoenixcontact.com/de/produkte/3214052>



## NS 35/ 7,5 ZN PERF 2000MM - DIN rail perforated

1206421

<https://www.phoenixcontact.com/de/produkte/1206421>



DIN rail perforated, acc. to EN 60715, material: Steel, galvanized, Standard profile, color: silver, Pack of 25 (50 m)

---

## NS 35/ 7,5 ZN UNPERF 2000MM - DIN rail, unperforated

1206434

<https://www.phoenixcontact.com/de/produkte/1206434>



DIN rail, unperforated, acc. to EN 60715, material: Steel, galvanized, Standard profile, color: silver, Pack of 25 (50 m)

# PTI 4-L/L - Installation level terminal block

3214052

<https://www.phoenixcontact.com/de/produkte/3214052>



## NS 35/ 7,5 CU UNPERF 2000MM-VPE 10 - DIN rail, unperforated

0801762

<https://www.phoenixcontact.com/de/produkte/0801762>



DIN rail, unperforated, acc. to EN 60715, material: Copper, uncoated, Standard profile, color: copper-colored, Pack of 10 (20 m)

---

## NS 35/ 7,5 CAP - End cap

1206560

<https://www.phoenixcontact.com/de/produkte/1206560>

DIN rail end piece, for DIN rail NS 35/7.5



# PTI 4-L/L - Installation level terminal block

3214052

<https://www.phoenixcontact.com/de/produkte/3214052>

## NS 35/15 PERF 2000MM - DIN rail perforated

1201730

<https://www.phoenixcontact.com/de/produkte/1201730>



DIN rail perforated, similar to EN 60715, material: Steel, galvanized, passivated with a thick layer, Standard profile, color: silver, Pack of 25 (50 m)

---

## NS 35/15 UNPERF 2000MM - DIN rail, unperforated

1201714

<https://www.phoenixcontact.com/de/produkte/1201714>



DIN rail, unperforated, similar to EN 60715, material: Steel, galvanized, passivated with a thick layer, Standard profile, color: silver, Pack of 25 (50 m)

## PTI 4-L/L - Installation level terminal block

3214052

<https://www.phoenixcontact.com/de/produkte/3214052>



### NS 35/15 WH PERF 2000MM - DIN rail perforated

0806602

<https://www.phoenixcontact.com/de/produkte/0806602>



DIN rail perforated, similar to EN 60715, material: Steel, Galvanized, white passivated, Standard profile, color: white, Pack of 25 (50 m)

---

### NS 35/15 WH UNPERF 2000MM-VPE 10 - DIN rail, unperforated

1204135

<https://www.phoenixcontact.com/de/produkte/1204135>



DIN rail, unperforated, similar to EN 60715, material: Steel, Galvanized, white passivated, Standard profile, color: silver, Pack of 10 (20 m)

## PTI 4-L/L - Installation level terminal block

3214052

<https://www.phoenixcontact.com/de/produkte/3214052>



### NS 35/15 AL UNPERF 2000MM - DIN rail, unperforated

1201756

<https://www.phoenixcontact.com/de/produkte/1201756>



DIN rail, unperforated, similar to EN 60715, material: Aluminum, uncoated, Standard profile, color: silver

---

### NS 35/15 ZN PERF 2000MM - DIN rail perforated

1206599

<https://www.phoenixcontact.com/de/produkte/1206599>



DIN rail perforated, similar to EN 60715, material: Steel, galvanized, Standard profile, color: silver, Pack of 25 (50 m)

# PTI 4-L/L - Installation level terminal block

3214052

<https://www.phoenixcontact.com/de/produkte/3214052>

## NS 35/15 ZN UNPERF 2000MM - DIN rail, unperforated

1206586

<https://www.phoenixcontact.com/de/produkte/1206586>



DIN rail, unperforated, similar to EN 60715, material: Steel, galvanized, Standard profile, color: silver, Pack of 25 (50 m)

---

## NS 35/15 CU UNPERF 2000MM-VPE 10 - DIN rail, unperforated

1201895

<https://www.phoenixcontact.com/de/produkte/1201895>



DIN rail, unperforated, similar to EN 60715, material: Copper, uncoated, Standard profile, color: copper-colored, Pack of 10 (20 m)

# PTI 4-L/L - Installation level terminal block

3214052

<https://www.phoenixcontact.com/de/produkte/3214052>



## NS 35/15 CAP - End cap

1206573

<https://www.phoenixcontact.com/de/produkte/1206573>

DIN rail end piece, for DIN rail NS 35/15



---

## NS 35/15-2,3 UNPERF 2000MM-VPE 10 - DIN rail, unperforated

1201798

<https://www.phoenixcontact.com/de/produkte/1201798>

DIN rail, unperforated, acc. to EN 60715, material: Steel, galvanized, passivated with a thick layer, Standard profile 2.3 mm, color: silver, Pack of 10 (20 m)





## PTI 4-L/L - Installation level terminal block

3214052

<https://www.phoenixcontact.com/de/produkte/3214052>

### ZBF 6:UNBEDRUCKT - Zack Marker strip, flat

0808710

<https://www.phoenixcontact.com/de/produkte/0808710>



Zack Marker strip, flat, Strip, white, unlabeled, can be labeled with: PLOTMARK, CMS-P1-PLOTTER, mounting type: snapped, for terminal block width: 6.2 mm, lettering field size: 5.15 x 6.15 mm, Number of individual labels: 10

---

### ZBF 6 CUS - Zack Marker strip, flat

0825027

<https://www.phoenixcontact.com/de/produkte/0825027>



Zack Marker strip, flat, Strip, can be ordered: Strip, white, labeled according to customer specifications, mounting type: snap into flat marker groove, for terminal block width: 6.2 mm, lettering field size: 5.15 x 6.15 mm, Number of individual labels: 10

# PTI 4-L/L - Installation level terminal block

3214052

<https://www.phoenixcontact.com/de/produkte/3214052>

## UC-TMF 6 - Marker for terminal blocks

0818140

<https://www.phoenixcontact.com/de/produkte/0818140>



Marker for terminal blocks, Sheet, white, unlabeled, can be labeled with: BLUEMARK ID COLOR, BLUEMARK ID, BLUEMARK CLED, PLOTMARK, CMS-P1-PLOTTER, mounting type: snapped, for terminal block width: 6.2 mm, lettering field size: 5.6 x 5.1 mm, Number of individual labels: 80

---

## UC-TMF 6 CUS - Marker for terminal blocks

0824646

<https://www.phoenixcontact.com/de/produkte/0824646>



Marker for terminal blocks, can be ordered: by sheet, white, labeled according to customer specifications, mounting type: snap into flat marker groove, for terminal block width: 6.2 mm, lettering field size: 5.6 x 5.1 mm, Number of individual labels: 80

# PTI 4-L/L - Installation level terminal block

3214052

<https://www.phoenixcontact.com/de/produkte/3214052>

## UCT-TMF 6 - Marker for terminal blocks

0828746

<https://www.phoenixcontact.com/de/produkte/0828746>



Marker for terminal blocks, Sheet, white, unlabeled, can be labeled with: TOPMARK NEO, TOPMARK LASER, BLUEMARK ID COLOR, BLUEMARK ID, BLUEMARK CLED, THERMOMARK PRIME, THERMOMARK CARD 2.0, THERMOMARK CARD, mounting type: snapped, for terminal block width: 6.2 mm, lettering field size: 5.4 x 4.7 mm, Number of individual labels: 60

---

## UCT-TMF 6 CUS - Marker for terminal blocks

0829665

<https://www.phoenixcontact.com/de/produkte/0829665>



Marker for terminal blocks, can be ordered: by sheet, white, labeled according to customer specifications, mounting type: snap into flat marker groove, for terminal block width: 6.2 mm, lettering field size: 5.4 x 4.7 mm, Number of individual labels: 60

# PTI 4-L/L - Installation level terminal block

3214052

<https://www.phoenixcontact.com/de/produkte/3214052>

## ZBF 6,LGS:FORTL.ZAHLEN - Zack Marker strip, flat

0808749

<https://www.phoenixcontact.com/de/produkte/0808749>



Zack Marker strip, flat, Strip, white, labeled, printed horizontally: consecutive numbers 1 ... 10, 11 ... 20, etc. up to 91 ... 100, mounting type: snapped, for terminal block width: 6.2 mm, lettering field size: 5.15 x 6.15 mm, Number of individual labels: 10

---

## ZBF 6,QR:FORTL.ZAHLEN - Zack Marker strip, flat

0808765

<https://www.phoenixcontact.com/de/produkte/0808765>



Zack Marker strip, flat, Strip, white, labeled, Printed vertically: consecutive numbers 1 ... 10, 11 ... 20, etc. up to 91 ... 100, mounting type: snapped, for terminal block width: 6.2 mm, lettering field size: 5.15 x 6.15 mm, Number of individual labels: 10

# PTI 4-L/L - Installation level terminal block

3214052

<https://www.phoenixcontact.com/de/produkte/3214052>

## ZBF 6,LGS:GERADE ZAHLEN - Zack Marker strip, flat

0810834

<https://www.phoenixcontact.com/de/produkte/0810834>



Zack Marker strip, flat, Strip, white, labeled, printed horizontally: consecutive even numbers 2 ... 20, 22 ... 40, etc. up to 82 ... 100, mounting type: snapped, for terminal block width: 6.2 mm, lettering field size: 5.15 x 6.15 mm, Number of individual labels: 10

---

## ZBF 6,LGS:UNGERADE ZAHLEN - Zack Marker strip, flat

0810876

<https://www.phoenixcontact.com/de/produkte/0810876>



Zack Marker strip, flat, Strip, white, labeled, printed horizontally: Odd numbers 1 - 19, 21 - 39, etc. up to 81 - 99, mounting type: snapped, for terminal block width: 6.2 mm, lettering field size: 5.15 x 6.15 mm, Number of individual labels: 10

## PTI 4-L/L - Installation level terminal block

3214052

<https://www.phoenixcontact.com/de/produkte/3214052>



### MPS-MT - Test plugs

0201744

<https://www.phoenixcontact.com/de/produkte/0201744>



Test plugs, with solder connection up to 1 mm<sup>2</sup> conductor cross section, color: gray

---

### MPS-IH WH - Insulating sleeve

0201663

<https://www.phoenixcontact.com/de/produkte/0201663>



Insulating sleeve, color: white

# PTI 4-L/L - Installation level terminal block

3214052

<https://www.phoenixcontact.com/de/produkte/3214052>

## MPS-IH RD - Insulating sleeve

0201676

<https://www.phoenixcontact.com/de/produkte/0201676>

Insulating sleeve, color: red



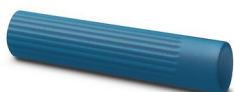
---

## MPS-IH BU - Insulating sleeve

0201689

<https://www.phoenixcontact.com/de/produkte/0201689>

Insulating sleeve, color: blue



# PTI 4-L/L - Installation level terminal block

3214052

<https://www.phoenixcontact.com/de/produkte/3214052>

## MPS-IH YE - Insulating sleeve

0201692

<https://www.phoenixcontact.com/de/produkte/0201692>

Insulating sleeve, color: yellow



## MPS-IH GN - Insulating sleeve

0201702

<https://www.phoenixcontact.com/de/produkte/0201702>

Insulating sleeve, color: green





# PTI 4-L/L - Installation level terminal block

3214052

<https://www.phoenixcontact.com/de/produkte/3214052>

## MPS-IH GY - Insulating sleeve

0201728

<https://www.phoenixcontact.com/de/produkte/0201728>

Insulating sleeve, color: gray



## MPS-IH BK - Insulating sleeve

0201731

<https://www.phoenixcontact.com/de/produkte/0201731>

Insulating sleeve, color: black



# PTI 4-L/L - Installation level terminal block

3214052

<https://www.phoenixcontact.com/de/produkte/3214052>

## ISH 4/0,5 - Insulating sleeve

3002885

<https://www.phoenixcontact.com/de/produkte/3002885>



Insulating sleeve, color: gray

---

## ISH 4/1,0 - Insulating sleeve

3002898

<https://www.phoenixcontact.com/de/produkte/3002898>



Insulating sleeve, color: black

# PTI 4-L/L - Installation level terminal block

3214052

<https://www.phoenixcontact.com/de/produkte/3214052>

## PAI-4-FIX-5/6 BU - Test adapter

3035975

<https://www.phoenixcontact.com/de/produkte/3035975>



4 mm test adapter, for terminal blocks with 5.2 mm and 6.2 mm pitch

---

## PAI-4-FIX-5/6 OG - Test adapter

3035974

<https://www.phoenixcontact.com/de/produkte/3035974>



4 mm test adapter, for terminal blocks with 5.2 mm and 6.2 mm pitch

---

# PTI 4-L/L - Installation level terminal block

3214052

<https://www.phoenixcontact.com/de/produkte/3214052>

## PAI-4-FIX-5/6 YE - Test adapter

3035977

<https://www.phoenixcontact.com/de/produkte/3035977>



4 mm test adapter, for terminal blocks with 5.2 mm and 6.2 mm pitch

---

## PAI-4-FIX-5/6 RD - Test adapter

3035976

<https://www.phoenixcontact.com/de/produkte/3035976>



4 mm test adapter, for terminal blocks with 5.2 mm and 6.2 mm pitch

# PTI 4-L/L - Installation level terminal block

3214052

<https://www.phoenixcontact.com/de/produkte/3214052>

## PAI-4-FIX-5/6 GN - Test adapter

3035978

<https://www.phoenixcontact.com/de/produkte/3035978>



4 mm test adapter, for terminal blocks with 5.2 mm and 6.2 mm pitch

---

## PAI-4-FIX-5/6 BK - Test adapter

3035980

<https://www.phoenixcontact.com/de/produkte/3035980>



4 mm test adapter, for terminal blocks with 5.2 mm and 6.2 mm pitch

---

# PTI 4-L/L - Installation level terminal block



3214052

<https://www.phoenixcontact.com/de/produkte/3214052>

## PAI-4-FIX-5/6 GY - Test adapter

3035982

<https://www.phoenixcontact.com/de/produkte/3035982>



4 mm test adapter, for terminal blocks with 5.2 mm and 6.2 mm pitch

---

## PAI-4-FIX-5/6 VT - Test adapter

3035979

<https://www.phoenixcontact.com/de/produkte/3035979>



4 mm test adapter, for terminal blocks with 5.2 mm and 6.2 mm pitch

# PTI 4-L/L - Installation level terminal block

3214052

<https://www.phoenixcontact.com/de/produkte/3214052>

## PAI-4-FIX-5/6 BN - Test adapter

3035981

<https://www.phoenixcontact.com/de/produkte/3035981>



4 mm test adapter, for terminal blocks with 5.2 mm and 6.2 mm pitch

---

## PAI-4-FIX-5/6 WH - Test adapter

3035983

<https://www.phoenixcontact.com/de/produkte/3035983>



4 mm test adapter, for terminal blocks with 5.2 mm and 6.2 mm pitch

# PTI 4-L/L - Installation level terminal block

3214052

<https://www.phoenixcontact.com/de/produkte/3214052>

## PS-6 - Test plugs

3030996

<https://www.phoenixcontact.com/de/produkte/3030996>



Test plugs, Modular test plug, color: red

---

## PS-6/2,3MM RD - Test plugs

3038736

<https://www.phoenixcontact.com/de/produkte/3038736>



Test plugs, color: red



## PTI 4-L/L - Installation level terminal block



3214052

<https://www.phoenixcontact.com/de/produkte/3214052>

### PROJECT COMPLETE - Software

1050453

<https://www.phoenixcontact.com/de/produkte/1050453>



Intuitive planning and marking software for configuring terminal strips and for professional marking of marking materials for terminal blocks, conductors, cables, devices, and systems. The software is available for download

---

### TMT 6 R - Marker for terminal blocks

0816498

<https://www.phoenixcontact.com/de/produkte/0816498>



Marker for terminal blocks, Roll, white, unlabeled, can be labeled with: THERMOMARK ROLL 2.0, THERMOMARK ROLL, THERMOMARK ROLL X1, THERMOMARK ROLLMASTER 300/600, THERMOMARK X1.2, THERMOMARK S1.1, perforated, mounting type: snapped, snap into flat marker groove, for terminal block width: 6.2 mm, lettering field size: 6.35 x 6.15 mm, Number of individual labels: 16000

# PTI 4-L/L - Installation level terminal block



3214052

<https://www.phoenixcontact.com/de/produkte/3214052>

## TMT 6 R CUS - Marker for terminal blocks

0824488

<https://www.phoenixcontact.com/de/produkte/0824488>



Marker for terminal blocks, can be ordered: by line, white, labeled according to customer specifications, mounting type: snap into universal marker groove, snap into flat marker groove, for terminal block width: 6.2 mm, lettering field size: 6.35 x 6.15 mm

---

## TMT (EX9,5)R - Marker for terminal blocks

0828295

<https://www.phoenixcontact.com/de/produkte/0828295>



Marker for terminal blocks, Roll, white, unlabeled, can be labeled with: THERMOMARK E.300 (D)/600 (D), THERMOMARK ROLL 2.0, THERMOMARK ROLL, THERMOMARK ROLL X1, THERMOMARK ROLLMASTER 300/600, THERMOMARK X1.2, mounting type: snapped, snap into tall marker groove, lettering field size: 9.5 x 50000 mm, Number of individual labels: 1

## PTI 4-L/L - Installation level terminal block

3214052

<https://www.phoenixcontact.com/de/produkte/3214052>



## US-TM 100 - Marker for terminal blocks

0829255

<https://www.phoenixcontact.com/de/produkte/0829255>



Marker for terminal blocks, Card, white, unlabeled, can be labeled with: BLUEMARK ID COLOR, BLUEMARK ID, THERMOMARK PRIME, THERMOMARK CARD 2.0, THERMOMARK CARD, mounting type: snapped, lettering field size: 104 x 9.8 mm, Number of individual labels: 13

---

## CLIPFIX 35 - End clamp

3022218

<https://www.phoenixcontact.com/de/produkte/3022218>



Quick mounting end clamp for NS 35/7,5 DIN rail or NS 35/15 DIN rail, with marking option, width: 9.5 mm, color: gray

# PTI 4-L/L - Installation level terminal block

3214052

<https://www.phoenixcontact.com/de/produkte/3214052>

## CLIPFIX 35-5 - End clamp

3022276

<https://www.phoenixcontact.com/de/produkte/3022276>



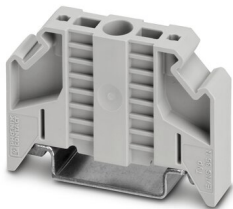
Quick mounting end clamp for NS 35/7,5 DIN rail or NS 35/15 DIN rail, with marking option, with parking option for FBS...5, FBS...6, KSS 5, KSS 6, width: 5.15 mm, color: gray

---

## E/NS 35 N - End clamp

0800886

<https://www.phoenixcontact.com/de/produkte/0800886>



End clamp, width: 9.5 mm, color: gray

# PTI 4-L/L - Installation level terminal block

3214052

<https://www.phoenixcontact.com/de/produkte/3214052>

## ZB 6:UNBEDRUCKT - Zack marker strip

1051003

<https://www.phoenixcontact.com/de/produkte/1051003>



Zack marker strip, Strip, white, unlabeled, can be labeled with: PLOTMARK, CMS-P1-PLOTTER, mounting type: snapped, for terminal block width: 6.2 mm, lettering field size: 6.15 x 10.5 mm, Number of individual labels: 10

---

## ZB 6 CUS - Zack marker strip

0824992

<https://www.phoenixcontact.com/de/produkte/0824992>



Zack marker strip, can be ordered: Strip, white, labeled according to customer specifications, mounting type: snap into tall marker groove, for terminal block width: 6.2 mm, lettering field size: 6.15 x 10.5 mm, Number of individual labels: 10

# PTI 4-L/L - Installation level terminal block

3214052

<https://www.phoenixcontact.com/de/produkte/3214052>

## ZB 6,LGS:FORTL.ZAHLEN - Zack marker strip

1051016

<https://www.phoenixcontact.com/de/produkte/1051016>



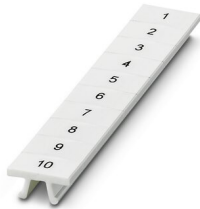
Zack marker strip, Strip, white, labeled, can be labeled with: CMS-P1-PLOTTER, printed horizontally: consecutive numbers 1 ... 10, 11 ... 20, etc. up to 491 ... 500, mounting type: snapped, for terminal block width: 6.2 mm, lettering field size: 6. 15 x 10.5 mm, Number of individual labels: 10

---

## ZB 6,QR:FORTL.ZAHLEN - Zack marker strip

1051029

<https://www.phoenixcontact.com/de/produkte/1051029>



Zack marker strip, Strip, white, labeled, can be labeled with: CMS-P1-PLOTTER, Printed vertically: consecutive numbers 1 ... 10, 11 ... 20, etc. up to 491 ... 500, mounting type: snapped, for terminal block width: 6.2 mm, lettering field size: 6. 15 x 10.5 mm, Number of individual labels: 10

# PTI 4-L/L - Installation level terminal block

3214052

<https://www.phoenixcontact.com/de/produkte/3214052>

## ZB 6,LGS:GLEICHE ZAHLEN - Zack marker strip

1051032

<https://www.phoenixcontact.com/de/produkte/1051032>



Zack marker strip, Strip, white, labeled, can be labeled with: CMS-P1-PLOTTER, printed horizontally: Identical numbers 1 or 2, etc. up to 100, mounting type: snapped, for terminal block width: 6.2 mm, lettering field size: 6.15 x 10.5 mm, Number of individual labels: 10

---

## ZB 6,LGS:L1-N,PE - Marker for terminal blocks

1051414

<https://www.phoenixcontact.com/de/produkte/1051414>



Marker for terminal blocks, Strip, white, labeled, can be labeled with: CMS-P1-PLOTTER, horizontal: L1, L2, L3, N, PE, L1, L2, L3, N, PE, mounting type: snapped, for terminal block width: 6.2 mm, lettering field size: 6.15 x 10.5 mm, Number of individual labels: 10

# PTI 4-L/L - Installation level terminal block

3214052

<https://www.phoenixcontact.com/de/produkte/3214052>

## ZB 6,LGS:U-N - Marker for terminal blocks

1051430

<https://www.phoenixcontact.com/de/produkte/1051430>



Marker for terminal blocks, Strip, white, labeled, can be labeled with: CMS-P1-PLOTTER, printed horizontally: U, V, W, N, GND, U, V, W, N, GND, mounting type: snapped, for terminal block width: 6.2 mm, lettering field size: 6.15 x 10.5 mm, Number of individual labels: 10

---

## UC-TM 6 - Marker for terminal blocks

0818085

<https://www.phoenixcontact.com/de/produkte/0818085>



Marker for terminal blocks, Sheet, white, unlabeled, can be labeled with: BLUEMARK ID COLOR, BLUEMARK ID, BLUEMARK CLED, PLOTMARK, CMS-P1-PLOTTER, mounting type: snapped, for terminal block width: 6.2 mm, lettering field size: 5.6 x 10.5 mm, Number of individual labels: 80



## PTI 4-L/L - Installation level terminal block

3214052

<https://www.phoenixcontact.com/de/produkte/3214052>



### UC-TM 6 CUS - Marker for terminal blocks

0824589

<https://www.phoenixcontact.com/de/produkte/0824589>



Marker for terminal blocks, can be ordered: by sheet, white, labeled according to customer specifications, mounting type: snap into tall marker groove, for terminal block width: 6.2 mm, lettering field size: 5.6 x 10.5 mm, Number of individual labels: 80

---

### UCT-TM 6 - Marker for terminal blocks

0828736

<https://www.phoenixcontact.com/de/produkte/0828736>



Marker for terminal blocks, Sheet, white, unlabeled, can be labeled with: TOPMARK NEO, TOPMARK LASER, BLUEMARK ID COLOR, BLUEMARK ID, BLUEMARK CLED, THERMOMARK PRIME, THERMOMARK CARD 2.0, THERMOMARK CARD, mounting type: snapped, for terminal block width: 6.2 mm, lettering field size: 5.6 x 10.5 mm, Number of individual labels: 60

# PTI 4-L/L - Installation level terminal block

3214052

<https://www.phoenixcontact.com/de/produkte/3214052>



## UCT-TM 6 CUS - Marker for terminal blocks

0829602

<https://www.phoenixcontact.com/de/produkte/0829602>

Marker for terminal blocks, can be ordered: by sheet, white, labeled according to customer specifications, mounting type: snap into tall marker groove, for terminal block width: 6.2 mm, lettering field size: 5.6 x 10.5 mm, Number of individual labels: 60



---

Phoenix Contact 2023 © - all rights reserved

<https://www.phoenixcontact.com>

PHOENIX CONTACT Deutschland GmbH

Flachsmarktstraße 8

D-32825 Blomberg

+49 52 35/3-1 20 00

[info@phoenixcontact.de](mailto:info@phoenixcontact.de)