

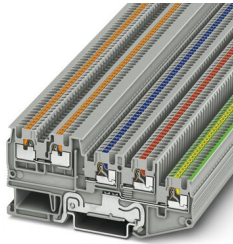
Sensor/actuator terminal block - PTIO 1,5/S/4-PE



3244465

<https://www.phoenixcontact.com/de/produkte/3244465>

Please be informed that the data shown in this PDF document is generated from our Online Catalog. Please find the complete data in the user documentation. Our General Terms of Use for Downloads are valid.



Sensor/actuator terminal block, with protective conductor function, nom. voltage: 250 V, nominal current: 13.5 A, connection method: Push-in connection, Rated cross section: 1.5 mm², cross section: 0.14 mm² - 1.5 mm², mounting type: NS 35/7,5, NS 35/15, color: gray

Your advantages

- The Push-in connection terminal blocks are characterized by the system features of the CLIPLINE complete system and by easy and tool-free wiring of conductors with ferrules or solid conductors
- The compact design and front connection enable wiring in a confined space
- In addition to the testing facility in the double function shaft, all terminal blocks provide an additional test connection

Commercial Data

Item number	3244465
Packing unit	50 pc
Minimum order quantity	50 pc
Sales Key	A1 - Reihenklemmen
Product Key	BE2218
Catalog Page	Page 41 (C-1-2019)
GTIN	4046356735889
Weight per Piece (including packing)	10,472 g
Weight per Piece (excluding packing)	9,74 g
Customs tariff number	85369010
Country of origin	PL

Sensor/actuator terminal block - PTIO 1,5/S/4-PE



3244465

<https://www.phoenixcontact.com/de/produkte/3244465>

Technical Data

Product properties

Product type	Sensor/actuator terminal block
Number of connections	5
Number of rows	4
Potentials	4

Insulation characteristics

Overvoltage category	III
Degree of pollution	3

Electrical properties

Rated surge voltage	4 kV
Maximum power dissipation for nominal condition	0.56 W

Connection data

Grounding foot	Yes
Number of connections per level	2
Nominal cross section	1.5 mm ²
Rated cross section AWG	14
Note	Please observe the current carrying capacity of the DIN rails.
Stripping length	8 mm ... 10 mm
Internal cylindrical gage	A1 / B1
Connection in acc. with standard	IEC 60947-7-1/IEC 60947-7-2
Conductor cross section solid	0.14 mm ² ... 1.5 mm ²
Cross section AWG	26 ... 14 (converted acc. to IEC)
Conductor cross section flexible	0.14 mm ² ... 1.5 mm ²
Conductor cross section, flexible [AWG]	26 ... 14 (converted acc. to IEC)
Flexible conductor cross section flexible (ferrule, w/o plastic sleeve)	0.14 mm ² ... 1.5 mm ²
Flexible conductor cross section (ferrule with plastic sleeve)	0.14 mm ² ... 1 mm ² Using the AI-S 1-8 TQ ferrule, Item No. 1200293, is recommended
Nominal current	13.5 A
Maximum load current	13.5 A
Nominal voltage	250 V
Nominal cross section	1.5 mm ²

Connection cross sections directly pluggable

Conductor cross section solid	0.25 mm ² ... 1.5 mm ²
Flexible conductor cross section flexible (ferrule, w/o plastic sleeve)	0.34 mm ² ... 1.5 mm ²
Flexible conductor cross section (ferrule with plastic sleeve)	0.34 mm ² ... 1 mm ²

Dimensions

Sensor/actuator terminal block - PTIO 1,5/S/4-PE



3244465

<https://www.phoenixcontact.com/de/produkte/3244465>

Width	3.5 mm
End cover width	2.2 mm
Height	40 mm
Height NS 35/15	48.5 mm
Height NS 35/7,5	41.5 mm
Length	90.8 mm

Material specifications

Color	gray
Flammability rating according to UL 94	V0
Insulating material group	I
Insulating material	PA
Static insulating material application in cold	-60 °C
Temperature index of insulation material (DIN EN 60216-1 (VDE 0304-21))	130 °C
Relative insulation material temperature index (Elec., UL 746 B)	130 °C
Fire protection for rail vehicles (DIN EN 45545-2) R22	HL 1 - HL 3
Fire protection for rail vehicles (DIN EN 45545-2) R23	HL 1 - HL 3
Fire protection for rail vehicles (DIN EN 45545-2) R24	HL 1 - HL 3
Fire protection for rail vehicles (DIN EN 45545-2) R26	HL 1 - HL 3
Calorimetric heat release NFPA 130 (ASTM E 1354)	28 MJ/kg
Surface flammability NFPA 130 (ASTM E 162)	passed
Specific optical density of smoke NFPA 130 (ASTM E 662)	passed
Smoke gas toxicity NFPA 130 (SMP 800C)	passed

Electrical tests

Surge voltage test

Test voltage setpoint	4.8 kV
Result	Test passed
Short-time withstand current 1.5 mm ²	0.8 kA
Result	Test passed

Power-frequency withstand voltage

Test voltage setpoint	1.5 kV
Result	Test passed

Mechanical properties

Mechanical data

Open side panel	Yes
-----------------	-----

Mechanical tests

Mechanical strength

Result	Test passed
--------	-------------

Sensor/actuator terminal block - PTIO 1,5/S/4-PE



3244465

<https://www.phoenixcontact.com/de/produkte/3244465>

Attachment on the carrier

DIN rail/fixing support	NS 35
Test force setpoint	1 N
Result	Test passed

Test for conductor damage and slackening

Rotation speed	10 rpm
Revolutions	135
Conductor cross section/weight	0.14 mm ² / 0.2 kg 1.5 mm ² / 0.4 kg
Result	Test passed

Environmental and real-life conditions

Aging

Temperature cycles	192
Result	Test passed

Needle-flame test

Time of exposure	30 s
Result	Test passed

Oscillation/broadband noise

Specification	DIN EN 50155 (VDE 0115-200):2008-03
Spectrum	Service life test category 2, bogie-mounted
Frequency	$f_1 = 5 \text{ Hz}$ to $f_2 = 250 \text{ Hz}$
ASD level	6.12 (m/s ²) ² /Hz
Acceleration	3.12g
Test duration per axis	5 h
Test directions	X-, Y- and Z-axis
Result	Test passed

Shocks

Specification	DIN EN 50155 (VDE 0115-200):2008-03
Pulse shape	Half-sine
Acceleration	30g
Shock duration	18 ms
Number of shocks per direction	3
Test directions	X-, Y- and Z-axis (pos. and neg.)
Result	Test passed

Ambient conditions

Ambient temperature (operation)	-60 °C ... 105 °C (max. short-term operating temperature RTI Elec.)
Ambient temperature (storage/transport)	-25 °C ... 60 °C (for a short time, not exceeding 24 h, -60 °C to +70 °C)
Ambient temperature (assembly)	-5 °C ... 70 °C

Sensor/actuator terminal block - PTIO 1,5/S/4-PE



3244465

<https://www.phoenixcontact.com/de/produkte/3244465>

Ambient temperature (actuation)	-5 °C ... 70 °C
Permissible humidity (storage/transport)	30 % ... 70 %

Standards and regulations

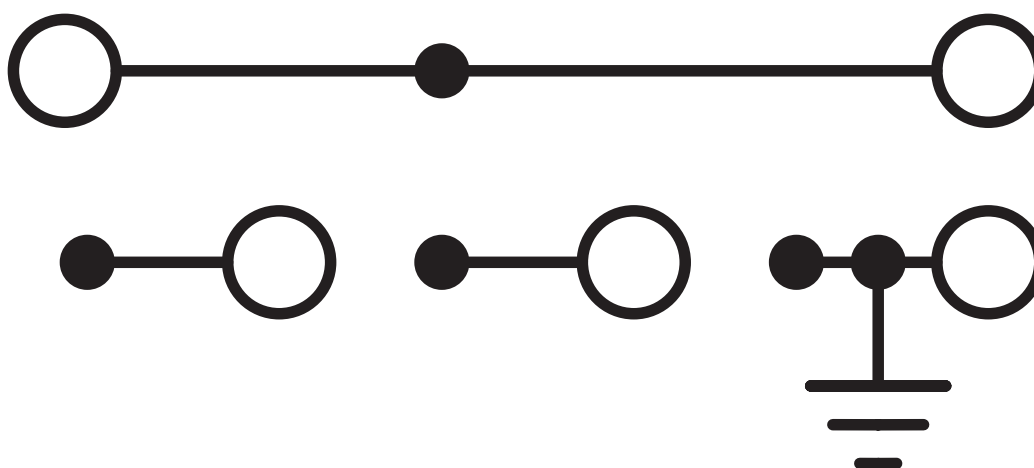
Connection in acc. with standard	IEC 60947-7-1/IEC 60947-7-2
----------------------------------	-----------------------------

Mounting

Mounting type	NS 35/7,5
	NS 35/15

Drawings

Circuit diagram




Sensor/actuator terminal block - PTIO 1,5/S/4-PE





3244465

<https://www.phoenixcontact.com/de/produkte/3244465>

Approvals

 CSA Approval ID: 13631				
	Nominal Voltage U_N	Nominal Current I_N	Cross Section AWG	Cross Section mm^2
Use group B	300 V	10 A	26 - 14	-
Use group C	150 V	15 A	26 - 14	-
Use group D	300 V	10 A	26 - 14	-

 EAC Approval ID: RU C-DE.BL08.B.00644				
---	--	--	--	--

 cULus Recognized Approval ID: E60425				
	Nominal Voltage U_N	Nominal Current I_N	Cross Section AWG	Cross Section mm^2
Use group B	300 V	15 A	26 - 14	-
PE connection			26 - 14	-
Use group C	150 V	15 A	26 - 14	-
PE connection			26 - 14	-
Use group D	300 V	10 A	26 - 14	-
PE connection			26 - 14	-

Sensor/actuator terminal block - PTIO 1,5/S/4-PE



3244465

<https://www.phoenixcontact.com/de/produkte/3244465>

Classifications

ECLASS

ECLASS-9.0	27141128
ECLASS-10.0.1	27141128
ECLASS-11.0	27141128

ETIM

ETIM 8.0	EC000900
----------	----------

UNSPSC

UNSPSC 21.0	39121400
-------------	----------

Sensor/actuator terminal block - PTIO 1,5/S/4-PE



3244465

<https://www.phoenixcontact.com/de/produkte/3244465>

Environmental Product Compliance


China RoHS	Environmentally friendly use period: unlimited = EFUP-e
	No hazardous substances above threshold values

Sensor/actuator terminal block - PTIO 1,5/S/4-PE

3244465

<https://www.phoenixcontact.com/de/produkte/3244465>

Accessories

 Note: Applying some accessories below might limit this product.


Plug-in bridge

Plug-in bridge - FBS 2-3,5 - 3213014

<https://www.phoenixcontact.com/de/produkte/3213014>



Plug-in bridge, pitch: 3.5 mm, color: red

 Max. current carrying capacity: 17.5 A

Plug-in bridge

Plug-in bridge - FBS 3-3,5 - 3213027

<https://www.phoenixcontact.com/de/produkte/3213027>



Plug-in bridge, pitch: 3.5 mm, color: red

 Max. current carrying capacity: 17.5 A

Sensor/actuator terminal block - PTIO 1,5/S/4-PE

3244465

<https://www.phoenixcontact.com/de/produkte/3244465>


Plug-in bridge

Plug-in bridge - FBS 4-3,5 - 3213030

<https://www.phoenixcontact.com/de/produkte/3213030>



Plug-in bridge, pitch: 3.5 mm, color: red

 Max. current carrying capacity: 17.5 A


Plug-in bridge

Plug-in bridge - FBS 5-3,5 - 3213043

<https://www.phoenixcontact.com/de/produkte/3213043>



Plug-in bridge, pitch: 3.5 mm, color: red

 Max. current carrying capacity: 17.5 A

Sensor/actuator terminal block - PTIO 1,5/S/4-PE

3244465

<https://www.phoenixcontact.com/de/produkte/3244465>

Plug-in bridge

Plug-in bridge - FBS 10-3,5 - 3213056

<https://www.phoenixcontact.com/de/produkte/3213056>



Plug-in bridge, pitch: 3.5 mm, color: red

 Max. current carrying capacity: 17.5 A


Plug-in bridge

Plug-in bridge - FBS 20-3,5 - 3213069

<https://www.phoenixcontact.com/de/produkte/3213069>



Plug-in bridge, pitch: 3.5 mm, color: red

 Max. current carrying capacity: 17.5 A

Sensor/actuator terminal block - PTIO 1,5/S/4-PE

3244465

<https://www.phoenixcontact.com/de/produkte/3244465>


Plug-in bridge

Plug-in bridge - FBS 50-3,5 - 3000706

<https://www.phoenixcontact.com/de/produkte/3000706>



Plug-in bridge, pitch: 3.5 mm, color: red

 Max. current carrying capacity: 17.5 A

Plug-in bridge

Plug-in bridge - FBS 2-3,5 BU - 3213086

<https://www.phoenixcontact.com/de/produkte/3213086>



Plug-in bridge, pitch: 3.5 mm, color: blue

 Max. current carrying capacity: 17.5 A

Sensor/actuator terminal block - PTIO 1,5/S/4-PE

3244465

<https://www.phoenixcontact.com/de/produkte/3244465>


Plug-in bridge

Plug-in bridge - FBS 3-3,5 BU - 3213099

<https://www.phoenixcontact.com/de/produkte/3213099>



Plug-in bridge, pitch: 3.5 mm, color: blue

 Max. current carrying capacity: 17.5 A

Plug-in bridge

Plug-in bridge - FBS 4-3,5 BU - 3213109

<https://www.phoenixcontact.com/de/produkte/3213109>



Plug-in bridge, pitch: 3.5 mm, color: blue

 Max. current carrying capacity: 17.5 A

Sensor/actuator terminal block - PTIO 1,5/S/4-PE

3244465

<https://www.phoenixcontact.com/de/produkte/3244465>


Plug-in bridge

Plug-in bridge - FBS 5-3,5 BU - 3213112

<https://www.phoenixcontact.com/de/produkte/3213112>



Plug-in bridge, pitch: 3.5 mm, color: blue

 Max. current carrying capacity: 17.5 A

Plug-in bridge

Plug-in bridge - FBS 10-3,5 BU - 3213125

<https://www.phoenixcontact.com/de/produkte/3213125>



Plug-in bridge, pitch: 3.5 mm, color: blue

 Max. current carrying capacity: 17.5 A

Sensor/actuator terminal block - PTIO 1,5/S/4-PE

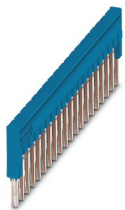
3244465

<https://www.phoenixcontact.com/de/produkte/3244465>


Plug-in bridge

Plug-in bridge - FBS 20-3,5 BU - 3213138

<https://www.phoenixcontact.com/de/produkte/3213138>



Plug-in bridge, pitch: 3.5 mm, color: blue

 Max. current carrying capacity: 17.5 A

Plug-in bridge

Plug-in bridge - FBS 50-3,5 BU - 3000708

<https://www.phoenixcontact.com/de/produkte/3000708>



Plug-in bridge, pitch: 3.5 mm, color: blue

 Max. current carrying capacity: 17.5 A

Sensor/actuator terminal block - PTIO 1,5/S/4-PE

3244465

<https://www.phoenixcontact.com/de/produkte/3244465>

Plug-in bridge

Plug-in bridge - FBS 2-3,5 GY - 3213153

<https://www.phoenixcontact.com/de/produkte/3213153>



Plug-in bridge, pitch: 3.5 mm, color: gray

 Max. current carrying capacity: 17.5 A

Plug-in bridge

Plug-in bridge - FBS 3-3,5 GY - 3213167

<https://www.phoenixcontact.com/de/produkte/3213167>



Plug-in bridge, pitch: 3.5 mm, color: gray

 Max. current carrying capacity: 17.5 A

Sensor/actuator terminal block - PTIO 1,5/S/4-PE

3244465

<https://www.phoenixcontact.com/de/produkte/3244465>


Plug-in bridge

Plug-in bridge - FBS 4-3,5 GY - 3213180

<https://www.phoenixcontact.com/de/produkte/3213180>



Plug-in bridge, pitch: 3.5 mm, color: gray

 Max. current carrying capacity: 17.5 A

Plug-in bridge

Plug-in bridge - FBS 5-3,5 GY - 3213183

<https://www.phoenixcontact.com/de/produkte/3213183>



Plug-in bridge, pitch: 3.5 mm, color: gray

 Max. current carrying capacity: 17.5 A

Sensor/actuator terminal block - PTIO 1,5/S/4-PE

3244465

<https://www.phoenixcontact.com/de/produkte/3244465>


Plug-in bridge

Plug-in bridge - FBS 10-3,5 GY - 3213196

<https://www.phoenixcontact.com/de/produkte/3213196>

Plug-in bridge, pitch: 3.5 mm, color: gray



 Max. current carrying capacity: 17.5 A


Plug-in bridge

Plug-in bridge - FBS 20-3,5 GY - 3213206

<https://www.phoenixcontact.com/de/produkte/3213206>

Plug-in bridge, pitch: 3.5 mm, color: gray



 Max. current carrying capacity: 17.5 A

Sensor/actuator terminal block - PTIO 1,5/S/4-PE

3244465

<https://www.phoenixcontact.com/de/produkte/3244465>

Plug-in bridge

Plug-in bridge - FBS 50-3,5 GY - 3000707

<https://www.phoenixcontact.com/de/produkte/3000707>



Plug-in bridge, pitch: 3.5 mm, color: gray

 Max. current carrying capacity: 17.5 A

End cover

End cover - D-PTIO 1,5/S/4 - 3244588

<https://www.phoenixcontact.com/de/produkte/3244588>



End cover, length: 90.8 mm, width: 2.2 mm, height: 33.8 mm, color: gray

Sensor/actuator terminal block - PTIO 1,5/S/4-PE



3244465

<https://www.phoenixcontact.com/de/produkte/3244465>

Mounting material

Mounting material - PT-IL - 3208090

<https://www.phoenixcontact.com/de/produkte/3208090>

Operating decal for the push-in Technology



Actuation tool

Actuation tool - ST-BW 0 - 1200135

<https://www.phoenixcontact.com/de/produkte/1200135>

Actuation tool, for all 1.5 mm² spring cages from PT 1,5/S and FT 1,5/S



Sensor/actuator terminal block - PTIO 1,5/S/4-PE

3244465

<https://www.phoenixcontact.com/de/produkte/3244465>

Marker for terminal blocks

Marker for terminal blocks - UCTU-TM (3,5X7) - 0803666

<https://www.phoenixcontact.com/de/produkte/0803666>

Marking material specially for PTIO 1.5/S... terminal block range



Cover segment

Cover segment - DS-PTIO 1,5/S - 1045987

<https://www.phoenixcontact.com/de/produkte/1045987>



End cover segments, large segment: 32.25 x 13.83 x 0.9, small segment: 22.65 x 11.65 x 0.9, color: gray

Sensor/actuator terminal block - PTIO 1,5/S/4-PE

3244465

<https://www.phoenixcontact.com/de/produkte/3244465>

Ferrule

Ferrule - AI-S 1 - 8 TQ - 1200293

<https://www.phoenixcontact.com/de/produkte/1200293>



Ferrule, S-Slimline, sleeve length: 8 mm, length: 14.5 mm, color: turquoise

DIN rail perforated

DIN rail perforated - NS 35/ 7,5 PERF 2000MM - 0801733

<https://www.phoenixcontact.com/de/produkte/0801733>



DIN rail perforated, acc. to EN 60715, material: Steel, galvanized, passivated with a thick layer, Standard profile, color: silver, Pack of 25 (50 m)

Sensor/actuator terminal block - PTIO 1,5/S/4-PE

3244465

<https://www.phoenixcontact.com/de/produkte/3244465>

DIN rail, unperforated

DIN rail, unperforated - NS 35/ 7,5 UNPERF 2000MM - 0801681

<https://www.phoenixcontact.com/de/produkte/0801681>



DIN rail, unperforated, acc. to EN 60715, material: Steel, galvanized, passivated with a thick layer, Standard profile, color: silver, Pack of 25 (50 m)

DIN rail perforated

DIN rail perforated - NS 35/ 7,5 WH PERF 2000MM - 1204119

<https://www.phoenixcontact.com/de/produkte/1204119>



DIN rail perforated, acc. to EN 60715, material: Steel, Galvanized, white passivated, Standard profile, color: silver, Pack of 25 (50 m)

Sensor/actuator terminal block - PTIO 1,5/S/4-PE

3244465

<https://www.phoenixcontact.com/de/produkte/3244465>

DIN rail, unperforated

DIN rail, unperforated - NS 35/ 7,5 WH UNPERF 2000MM-VPE 10 - 1204122

<https://www.phoenixcontact.com/de/produkte/1204122>



DIN rail, unperforated, acc. to EN 60715, material: Steel, Galvanized, white passivated, Standard profile, color: silver, Pack of 10 (20 m)

DIN rail, unperforated

DIN rail, unperforated - NS 35/ 7,5 AL UNPERF 2000MM - 0801704

<https://www.phoenixcontact.com/de/produkte/0801704>



DIN rail, unperforated, acc. to EN 60715, material: Aluminum, uncoated, Standard profile, color: silver, Pack of 25 (50 m)

Sensor/actuator terminal block - PTIO 1,5/S/4-PE

3244465

<https://www.phoenixcontact.com/de/produkte/3244465>

DIN rail perforated

DIN rail perforated - NS 35/ 7,5 ZN PERF 2000MM - 1206421

<https://www.phoenixcontact.com/de/produkte/1206421>



DIN rail perforated, acc. to EN 60715, material: Steel, galvanized, Standard profile, color: silver, Pack of 25 (50 m)

DIN rail, unperforated

DIN rail, unperforated - NS 35/ 7,5 ZN UNPERF 2000MM - 1206434

<https://www.phoenixcontact.com/de/produkte/1206434>



DIN rail, unperforated, acc. to EN 60715, material: Steel, galvanized, Standard profile, color: silver, Pack of 25 (50 m)

Sensor/actuator terminal block - PTIO 1,5/S/4-PE

3244465

<https://www.phoenixcontact.com/de/produkte/3244465>

DIN rail, unperforated

DIN rail, unperforated - NS 35/ 7,5 CU UNPERF 2000MM-VPE 10 - 0801762

<https://www.phoenixcontact.com/de/produkte/0801762>



DIN rail, unperforated, acc. to EN 60715, material: Copper, uncoated, Standard profile, color: copper-colored, Pack of 10 (20 m)

End cap

End cap - NS 35/ 7,5 CAP - 1206560

<https://www.phoenixcontact.com/de/produkte/1206560>

DIN rail end piece, for DIN rail NS 35/7.5



Sensor/actuator terminal block - PTIO 1,5/S/4-PE

3244465

<https://www.phoenixcontact.com/de/produkte/3244465>

DIN rail perforated

DIN rail perforated - NS 35/15 PERF 2000MM - 1201730

<https://www.phoenixcontact.com/de/produkte/1201730>



DIN rail perforated, similar to EN 60715, material: Steel, galvanized, passivated with a thick layer, Standard profile, color: silver, Pack of 25 (50 m)

DIN rail, unperforated

DIN rail, unperforated - NS 35/15 UNPERF 2000MM - 1201714

<https://www.phoenixcontact.com/de/produkte/1201714>



DIN rail, unperforated, similar to EN 60715, material: Steel, galvanized, passivated with a thick layer, Standard profile, color: silver, Pack of 25 (50 m)

Sensor/actuator terminal block - PTIO 1,5/S/4-PE

3244465

<https://www.phoenixcontact.com/de/produkte/3244465>

DIN rail perforated

DIN rail perforated - NS 35/15 WH PERF 2000MM - 0806602

<https://www.phoenixcontact.com/de/produkte/0806602>



DIN rail perforated, similar to EN 60715, material: Steel, Galvanized, white passivated, Standard profile, color: white, Pack of 25 (50 m)

DIN rail, unperforated

DIN rail, unperforated - NS 35/15 WH UNPERF 2000MM-VPE 10 - 1204135

<https://www.phoenixcontact.com/de/produkte/1204135>



DIN rail, unperforated, similar to EN 60715, material: Steel, Galvanized, white passivated, Standard profile, color: silver, Pack of 10 (20 m)

Sensor/actuator terminal block - PTIO 1,5/S/4-PE

3244465

<https://www.phoenixcontact.com/de/produkte/3244465>

DIN rail, unperforated

DIN rail, unperforated - NS 35/15 AL UNPERF 2000MM - 1201756

<https://www.phoenixcontact.com/de/produkte/1201756>



DIN rail, unperforated, similar to EN 60715, material: Aluminum, uncoated, Standard profile, color: silver

DIN rail perforated

DIN rail perforated - NS 35/15 ZN PERF 2000MM - 1206599

<https://www.phoenixcontact.com/de/produkte/1206599>



DIN rail perforated, similar to EN 60715, material: Steel, galvanized, Standard profile, color: silver, Pack of 25 (50 m)

Sensor/actuator terminal block - PTIO 1,5/S/4-PE

3244465

<https://www.phoenixcontact.com/de/produkte/3244465>

DIN rail, unperforated

DIN rail, unperforated - NS 35/15 ZN UNPERF 2000MM - 1206586

<https://www.phoenixcontact.com/de/produkte/1206586>



DIN rail, unperforated, similar to EN 60715, material: Steel, galvanized, Standard profile, color: silver, Pack of 25 (50 m)

DIN rail, unperforated

DIN rail, unperforated - NS 35/15 CU UNPERF 2000MM-VPE 10 - 1201895

<https://www.phoenixcontact.com/de/produkte/1201895>



DIN rail, unperforated, similar to EN 60715, material: Copper, uncoated, Standard profile, color: copper-colored, Pack of 10 (20 m)

Sensor/actuator terminal block - PTIO 1,5/S/4-PE

3244465

<https://www.phoenixcontact.com/de/produkte/3244465>

End cap

End cap - NS 35/15 CAP - 1206573

<https://www.phoenixcontact.com/de/produkte/1206573>

DIN rail end piece, for DIN rail NS 35/15



DIN rail, unperforated

DIN rail, unperforated - NS 35/15-2,3 UNPERF 2000MM-VPE 10 - 1201798

<https://www.phoenixcontact.com/de/produkte/1201798>



DIN rail, unperforated, acc. to EN 60715, material: Steel, galvanized, passivated with a thick layer, Standard profile 2.3 mm, color: silver, Pack of 10 (20 m)

Sensor/actuator terminal block - PTIO 1,5/S/4-PE

3244465

<https://www.phoenixcontact.com/de/produkte/3244465>

Test plugs

Test plugs - MPS-MT - 0201744

<https://www.phoenixcontact.com/de/produkte/0201744>



Test plugs, with solder connection up to 1 mm² conductor cross section, color: gray

Insulating sleeve

Insulating sleeve - MPS-IH WH - 0201663

<https://www.phoenixcontact.com/de/produkte/0201663>



Insulating sleeve, color: white

Sensor/actuator terminal block - PTIO 1,5/S/4-PE

3244465

<https://www.phoenixcontact.com/de/produkte/3244465>

Insulating sleeve

Insulating sleeve - MPS-IH RD - 0201676

<https://www.phoenixcontact.com/de/produkte/0201676>

Insulating sleeve, color: red

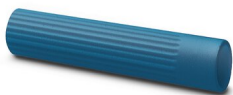


Insulating sleeve

Insulating sleeve - MPS-IH BU - 0201689

<https://www.phoenixcontact.com/de/produkte/0201689>

Insulating sleeve, color: blue



Sensor/actuator terminal block - PTIO 1,5/S/4-PE

3244465

<https://www.phoenixcontact.com/de/produkte/3244465>

Insulating sleeve

Insulating sleeve - MPS-IH YE - 0201692

<https://www.phoenixcontact.com/de/produkte/0201692>

Insulating sleeve, color: yellow



Insulating sleeve

Insulating sleeve - MPS-IH GN - 0201702

<https://www.phoenixcontact.com/de/produkte/0201702>

Insulating sleeve, color: green



Sensor/actuator terminal block - PTIO 1,5/S/4-PE

3244465

<https://www.phoenixcontact.com/de/produkte/3244465>

Insulating sleeve

Insulating sleeve - MPS-IH GY - 0201728

<https://www.phoenixcontact.com/de/produkte/0201728>

Insulating sleeve, color: gray



Insulating sleeve

Insulating sleeve - MPS-IH BK - 0201731

<https://www.phoenixcontact.com/de/produkte/0201731>

Insulating sleeve, color: black



Sensor/actuator terminal block - PTIO 1,5/S/4-PE

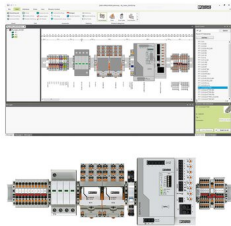
3244465

<https://www.phoenixcontact.com/de/produkte/3244465>

Software

Software - PROJECT COMPLETE - 1050453

<https://www.phoenixcontact.com/de/produkte/1050453>



Intuitive planning and marking software for configuring terminal strips and for professional marking of marking materials for terminal blocks, conductors, cables, devices, and systems. The software is available for download

End clamp

End clamp - CLIPFIX 35 - 3022218

<https://www.phoenixcontact.com/de/produkte/3022218>



Quick mounting end clamp for NS 35/7,5 DIN rail or NS 35/15 DIN rail, with marking option, width: 9.5 mm, color: gray

Sensor/actuator terminal block - PTIO 1,5/S/4-PE

3244465

<https://www.phoenixcontact.com/de/produkte/3244465>

End clamp

End clamp - CLIPFIX 35-5 - 3022276

<https://www.phoenixcontact.com/de/produkte/3022276>

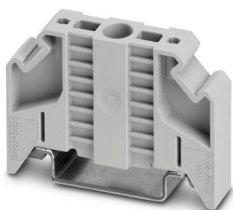


Quick mounting end clamp for NS 35/7,5 DIN rail or NS 35/15 DIN rail, with marking option, with parking option for FBS...5, FBS...6, KSS 5, KSS 6, width: 5.15 mm, color: gray

End clamp

End clamp - E/NS 35 N - 0800886

<https://www.phoenixcontact.com/de/produkte/0800886>



End clamp, width: 9.5 mm, color: gray

Sensor/actuator terminal block - PTIO 1,5/S/4-PE

3244465

<https://www.phoenixcontact.com/de/produkte/3244465>

Test plugs

Test plugs - PS-3,5 - 3031010

<https://www.phoenixcontact.com/de/produkte/3031010>



Test plugs, Modular test plug, color: red

Spacer plate

Spacer plate - DP PS-3,5 - 3031011

<https://www.phoenixcontact.com/de/produkte/3031011>



Spacer plate, length: 15.9 mm, width: 3.5 mm, height: 33.5 mm, number of positions: 1, color: red

Sensor/actuator terminal block - PTIO 1,5/S/4-PE

3244465

<https://www.phoenixcontact.com/de/produkte/3244465>

Test plugs

Test plugs - PS-3,5/E - 3031012

<https://www.phoenixcontact.com/de/produkte/3031012>

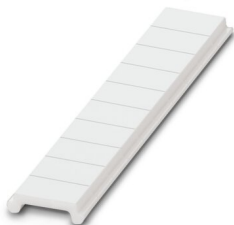


Test plugs, Individual test plug, color: red

Zack Marker strip, flat

Zack Marker strip, flat - ZBF 3,5:UNBEDRUCKT - 0829392

<https://www.phoenixcontact.com/de/produkte/0829392>



Zack Marker strip, flat, Strip, white, unlabeled, can be labeled with: PLOTMARK, CMS-P1-PLOTTER, mounting type: snapped, for terminal block width: 3.5 mm, lettering field size: 3.5 x 5.2 mm, Number of individual labels: 10

Sensor/actuator terminal block - PTIO 1,5/S/4-PE

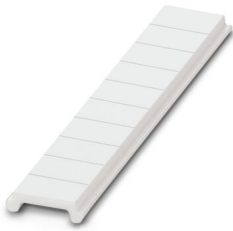
3244465

<https://www.phoenixcontact.com/de/produkte/3244465>

Zack Marker strip, flat

Zack Marker strip, flat - ZBF 3,5 CUS - 0829394

<https://www.phoenixcontact.com/de/produkte/0829394>



Zack Marker strip, flat, can be ordered: Strip, white, labeled according to customer specifications, mounting type: snap into flat marker groove, for terminal block width: 3.5 mm, lettering field size: 3.5 x 5.2 mm, Number of individual labels: 10

Zack Marker strip, flat

Zack Marker strip, flat - ZBF 3,5,LGS:FORTL.ZAHLEN - 0801406

<https://www.phoenixcontact.com/de/produkte/0801406>



Zack Marker strip, flat, Strip, white, labeled, printed horizontally: consecutive numbers 1 ... 10, 11 ... 20, etc. up to 91 ... 100, mounting type: snapped, for terminal block width: 3.5 mm, lettering field size: 5.15 x 3.5 mm, Number of individual labels: 10

Sensor/actuator terminal block - PTIO 1,5/S/4-PE



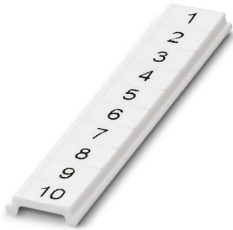
3244465

<https://www.phoenixcontact.com/de/produkte/3244465>

Zack Marker strip, flat

Zack Marker strip, flat - ZBF 3,5,QR:FORTL.ZAHLEN - 0801407

<https://www.phoenixcontact.com/de/produkte/0801407>



Zack Marker strip, flat, Strip, white, labeled, Printed vertically: consecutive numbers 1 ... 10, 11 ... 20, etc. up to 91 ... 100, mounting type: snapped, for terminal block width: 3.5 mm, lettering field size: 5.15 x 3.5 mm, Number of individual labels: 10

Marker for terminal blocks

Marker for terminal blocks - UCT-TMF 3,5 - 0829486

<https://www.phoenixcontact.com/de/produkte/0829486>



Marker for terminal blocks, Sheet, white, unlabeled, can be labeled with: TOPMARK NEO, TOPMARK LASER, BLUEMARK ID COLOR, BLUEMARK ID, BLUEMARK CLED, THERMOMARK PRIME, THERMOMARK CARD 2.0, THERMOMARK CARD, mounting type: snapped, for terminal block width: 3.5 mm, lettering field size: 2.7 x 4.7 mm, Number of individual labels: 108

Sensor/actuator terminal block - PTIO 1,5/S/4-PE

3244465

<https://www.phoenixcontact.com/de/produkte/3244465>

Marker for terminal blocks

Marker for terminal blocks - UCT-TMF 3,5 CUS - 0829644

<https://www.phoenixcontact.com/de/produkte/0829644>



Marker for terminal blocks, can be ordered: by sheet, white, labeled according to customer specifications, mounting type: snap into flat marker groove, for terminal block width: 3.5 mm, lettering field size: 2.7 x 4.7 mm, Number of individual labels: 108

Crimping pliers

Crimping pliers - CRIMPFOX CENTRUS 6S - 1213144

<https://www.phoenixcontact.com/de/produkte/1213144>



Crimping pliers, for uninsulated and insulated ferrules, DIN 46228 Part 1 and 4, from 0.14 mm² ... 6 mm², also for TWIN ferrules up to 2 x 4 mm², automatic cross section adjustment, lateral insertion, equipped with fall protection

Sensor/actuator terminal block - PTIO 1,5/S/4-PE

3244465

<https://www.phoenixcontact.com/de/produkte/3244465>

Crimping pliers

Crimping pliers - CRIMPFOX CENTRUS 10S - 1213154

<https://www.phoenixcontact.com/de/produkte/1213154>



Crimping pliers, for uninsulated and insulated ferrules, DIN 46228 Part 1 and 4, from 0.14 mm² ... 10 mm², also for TWIN ferrules up to 2 x 4 mm², automatic cross section adjustment, lateral insertion, equipped with fall protection

Crimping pliers

Crimping pliers - CRIMPFOX CENTRUS 6H - 1213146

<https://www.phoenixcontact.com/de/produkte/1213146>



Crimping pliers, for uninsulated and insulated ferrules, DIN 46228 Part 1 and 4, from 0.14 mm² ... 6 mm², also for TWIN ferrules up to 2 x 4 mm², automatic cross section adjustment, lateral insertion, equipped with fall protection

Sensor/actuator terminal block - PTIO 1,5/S/4-PE

3244465

<https://www.phoenixcontact.com/de/produkte/3244465>

Crimping pliers

Crimping pliers - CRIMPFOX CENTRUS 10H - 1213156

<https://www.phoenixcontact.com/de/produkte/1213156>



Crimping pliers, for uninsulated and insulated ferrules, DIN 46228 Part 1 and 4, from 0.14 mm² ... 10 mm², also for TWIN ferrules up to 2 x 4 mm², automatic cross section adjustment, lateral insertion, equipped with fall protection

Crimping pliers

Crimping pliers - CRIMPFOX 10S - 1212045

<https://www.phoenixcontact.com/de/produkte/1212045>



Crimping pliers, for ferrules without insulating collar according to DIN 46228 Part 1 and ferrules with insulating collar according to DIN 46228 Part 4, 0.14 mm² ... 10 mm², unlockable pressure lock, lateral entry

3244465

<https://www.phoenixcontact.com/de/produkte/3244465>

Crimping pliers

Crimping pliers - CRIMPFOX 6H - 1212046

<https://www.phoenixcontact.com/de/produkte/1212046>



Crimping pliers, for ferrules without insulating collar according to DIN 46228 Part 1 and ferrules with insulating collar according to DIN 46228 Part 4, 0.14 mm² ... 6 mm², unlockable pressure lock, lateral entry

Crimping pliers

Crimping pliers - CRIMPFOX 2,5-M - 1212719

<https://www.phoenixcontact.com/de/produkte/1212719>



Crimping pliers, for ferrules without insulating collar according to DIN 46228 Part 1 and ferrules with insulating collar according to DIN 46228 Part 4, 0.25 mm² ... 2.5 mm², lateral entry, trapezoidal crimp

3244465

<https://www.phoenixcontact.com/de/produkte/3244465>

Crimping pliers

Crimping pliers - CRIMPFOX 6-M - 1212720

<https://www.phoenixcontact.com/de/produkte/1212720>



Crimping pliers, for ferrules without insulating collar according to DIN 46228 Part 1 and ferrules with insulating collar according to DIN 46228 Part 4, 0.25 mm² ... 6.0 mm², lateral entry, trapezoidal crimp

Crimping pliers

Crimping pliers - CRIMPFOX 6 - 1212034

<https://www.phoenixcontact.com/de/produkte/1212034>



Crimping pliers, for ferrules without insulating collar according to DIN 46228 Part 1 and ferrules with insulating collar according to DIN 46228 Part 4, 0.25 mm² ... 6.0 mm², lateral entry, trapezoidal crimp

3244465

<https://www.phoenixcontact.com/de/produkte/3244465>

Crimping pliers

Crimping pliers - CRIMPFOX 6T - 1212037

<https://www.phoenixcontact.com/de/produkte/1212037>



Crimping pliers, for ferrules without insulating collar according to DIN 46228 Part 1 and ferrules with insulating collar according to DIN 46228 Part 4, 0.25 mm² ... 6 mm², lateral entry, trapezoidal crimp

Crimping pliers

Crimping pliers - CRIMPFOX 6T-F - 1212038

<https://www.phoenixcontact.com/de/produkte/1212038>



Crimping pliers, for ferrules without insulating collar according to DIN 46228 Part 1 and ferrules with insulating collar according to DIN 46228 Part 4, 0.25 mm² ... 6 mm², front entry, trapezoidal crimp

3244465

<https://www.phoenixcontact.com/de/produkte/3244465>

Crimping pliers

Crimping pliers - CRIMPFOX 6S-F - 1212043

<https://www.phoenixcontact.com/de/produkte/1212043>



Crimping pliers, for ferrules without insulating collar according to DIN 46228 Part 1 and ferrules with insulating collar according to DIN 46228 Part 4, 0.5 mm² ... 6 mm², front entry, square crimp

Crimping pliers

Crimping pliers - CRIMPFOX-M - 1212072

<https://www.phoenixcontact.com/de/produkte/1212072>



Basic pliers, for accommodating dies for a wide range of type of contacts

Sensor/actuator terminal block - PTIO 1,5/S/4-PE

3244465

<https://www.phoenixcontact.com/de/produkte/3244465>

Zack marker strip

Zack marker strip - ZB 3,5:UNBEDRUCKT - 0829414

<https://www.phoenixcontact.com/de/produkte/0829414>



Zack marker strip, Strip, white, unlabeled, can be labeled with: PLOTMARK, CMS-P1-PLOTTER, mounting type: snapped, for terminal block width: 3.5 mm, lettering field size: 3.5 x 10.5 mm, Number of individual labels: 10

Zack marker strip

Zack marker strip - ZB 3,5 CUS - 0829415

<https://www.phoenixcontact.com/de/produkte/0829415>



Zack marker strip, can be ordered: Strip, white, labeled according to customer specifications, mounting type: snap into tall marker groove, for terminal block width: 3.5 mm, lettering field size: 3.5 x 10.5 mm, Number of individual labels: 10

Sensor/actuator terminal block - PTIO 1,5/S/4-PE

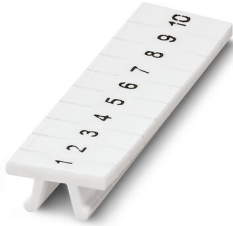
3244465

<https://www.phoenixcontact.com/de/produkte/3244465>

Zack marker strip

Zack marker strip - ZB 3,5,LGS:FORTL.ZAHLEN - 0801404

<https://www.phoenixcontact.com/de/produkte/0801404>

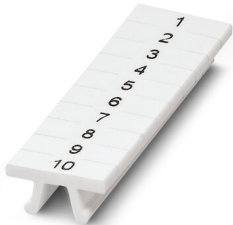


Zack marker strip, Strip, white, labeled, printed horizontally: consecutive numbers 1 ... 10, 11 ... 20, etc. up to 91 ... 100, mounting type: snapped, for terminal block width: 3.5 mm, lettering field size: 3.5 x 10.5 mm, Number of individual labels: 10

Zack marker strip

Zack marker strip - ZB 3,5,QR:FORT.ZAHLEN - 0801405

<https://www.phoenixcontact.com/de/produkte/0801405>



Zack marker strip, Strip, white, labeled, Printed vertically: consecutive numbers 1 ... 10, 11 ... 20, etc. up to 91 ... 100, mounting type: snapped, for terminal block width: 3.5 mm, lettering field size: 3.5 x 10.5 mm, Number of individual labels: 10

Sensor/actuator terminal block - PTIO 1,5/S/4-PE

3244465

<https://www.phoenixcontact.com/de/produkte/3244465>

Marker for terminal blocks

Marker for terminal blocks - UCT-TM 3,5 - 0829484

<https://www.phoenixcontact.com/de/produkte/0829484>



Marker for terminal blocks, Sheet, white, unlabeled, can be labeled with: TOPMARK NEO, TOPMARK LASER, BLUEMARK ID COLOR, BLUEMARK ID, BLUEMARK CLED, THERMOMARK PRIME, THERMOMARK CARD 2.0, THERMOMARK CARD, mounting type: snapped, for terminal block width: 3.5 mm, lettering field size: 2.95 x 10.5 mm, Number of individual labels: 102

Marker for terminal blocks

Marker for terminal blocks - UCT-TM 3,5 CUS - 0829581

<https://www.phoenixcontact.com/de/produkte/0829581>



Marker for terminal blocks, can be ordered: by sheet, white, labeled according to customer specifications, mounting type: snap into tall marker groove, for terminal block width: 3.5 mm, lettering field size: 2.95 x 10.5 mm, Number of individual labels: 102

Sensor/actuator terminal block - PTIO 1,5/S/4-PE



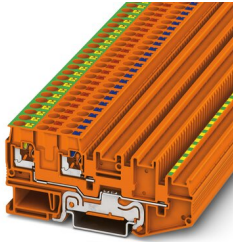
3244465

<https://www.phoenixcontact.com/de/produkte/3244465>

Sensor/actuator terminal block

Sensor/actuator terminal block - PTIO-IN 2,5/4-PE OG - 3244481

<https://www.phoenixcontact.com/de/produkte/3244481>



Sensor/actuator terminal block, Feed-in terminal with protective conductor function, nom. voltage: 250 V, nominal current: 20 A, connection method: Push-in connection, Rated cross section: 2.5 mm², cross section: 0.2 mm² - 4 mm², mounting type: NS 35/7,5, NS 35/15, color: orange

Phoenix Contact 2023 © - all rights reserved

<https://www.phoenixcontact.com>

PHOENIX CONTACT Deutschland GmbH

Flachsmarktstraße 8

D-32825 Blomberg

+49 52 35/3-1 20 00

info@phoenixcontact.de