

# UK 10-DREHSI-EX (5X20) - Fuse modular terminal block



3073953

<https://www.phoenixcontact.com/de/produkte/3073953>

Please be informed that the data shown in this PDF document is generated from our online catalog. Please find the complete data in the user documentation. Our general terms of use for downloads are valid.



Fuse modular terminal block, fuse type: Glass / ceramics / ..., fuse type: G / 5 x 20, nom. voltage: 500 V, nominal current: 10 A, connection method: Screw connection, Rated cross section: 1.5 mm<sup>2</sup>, cross section: 0.5 mm<sup>2</sup>- 16 mm<sup>2</sup>, mounting type: NS 35/7,5, NS 35/15, NS 32, color: black

## Your advantages

- Fuse terminal block for explosion protection

## Commercial data

|                                      |                    |
|--------------------------------------|--------------------|
| Item number                          | 3073953            |
| Packing unit                         | 50 pc              |
| Minimum order quantity               | 50 pc              |
| Sales key                            | A1 - Reihenklennen |
| Product key                          | BE1235             |
| GTIN                                 | 4046356343121      |
| Weight per piece (including packing) | 33,8 g             |
| Weight per piece (excluding packing) | 33,8 g             |
| Customs tariff number                | 85369095           |
| Country of origin                    | PL                 |

# UK 10-DREHSI-EX (5X20) - Fuse modular terminal block



3073953

<https://www.phoenixcontact.com/de/produkte/3073953>

## Technical data

### Product properties

|                       |                     |
|-----------------------|---------------------|
| Product type          | Fuse terminal block |
| Number of connections | 2                   |
| Number of rows        | 1                   |
| Potentials            | 1                   |

### Data management status

|                  |    |
|------------------|----|
| Article revision | 08 |
|------------------|----|

### Insulation characteristics

|                      |     |
|----------------------|-----|
| Overvoltage category | III |
| Degree of pollution  | 3   |

### Electrical properties

|   |                        |
|---|------------------------|
| Fuse type                                       | Glass / ceramics / ... |
| Rated surge voltage                             | 4 kV                   |
| Maximum power dissipation for nominal condition | 2.43 W                 |
| Fuse  | G / 5 x 20             |

### Connection data

|                                 |                    |
|---------------------------------|--------------------|
| Number of connections per level | 2                  |
| Nominal cross section           | 16 mm <sup>2</sup> |

### Level 1 above 1 below 1

|   |  |
|---|--|
| Screw thread  | M4   |
| Tightening torque   | 1.5 ... 1.8 Nm                             |
| Stripping length  | 11 mm                                      |
| Internal cylindrical gage   | B6   |
| Connection in acc. with standard  | IEC 60947-7-3                              |
| Conductor cross section rigid   | 0.5 mm <sup>2</sup> ... 16 mm <sup>2</sup> |
| Cross section AWG   | 20 ... 6 (converted acc. to IEC)           |
| Conductor cross section flexible  | 0.5 mm <sup>2</sup> ... 16 mm <sup>2</sup> |
| Conductor cross section, flexible [AWG]   | 20 ... 6 (converted acc. to IEC)           |
| Conductor cross-section flexible (ferrule without plastic sleeve)                         | 0.5 mm <sup>2</sup> ... 10 mm <sup>2</sup> |
| Flexible conductor cross section (ferrule with plastic sleeve)                            | 0.5 mm <sup>2</sup> ... 10 mm <sup>2</sup> |
| Cross-section with insertion bridge, rigid  | 10 mm <sup>2</sup>                         |
| Cross-section with insertion bridge, flexible   | 10 mm <sup>2</sup>                         |
| 2 conductors with same cross section, solid   | 0.5 mm <sup>2</sup> ... 4 mm <sup>2</sup>  |
| 2 conductors with same cross section, flexible  | 0.5 mm <sup>2</sup> ... 4 mm <sup>2</sup>  |
| 2 conductors with same cross section, flexible, with ferrule without plastic sleeve       | 0.5 mm <sup>2</sup> ... 4 mm <sup>2</sup>  |
| 2 conductors with the same cross section, flexible, with TWIN ferrule with plastic sleeve | 0.5 mm <sup>2</sup> ... 10 mm <sup>2</sup> |

# UK 10-DREHSI-EX (5X20) - Fuse modular terminal block



3073953

<https://www.phoenixcontact.com/de/produkte/3073953>

|                       |  |
|-----------------------|--|
| Nominal current       | 10 A   |
| Maximum load current  | 10 A   |
| Nominal voltage       | 500 V (As a fuse terminal block)<br>800 V (As a disconnect terminal block) |
| Nominal cross section | 1.5 mm <sup>2</sup>  |

## Ex data

### Rated data (ATEX/IECEx)

|                             |   |
|-----------------------------|---|
| Identification              | ⊕ II 3 GD Ex nA IIC Gc                  |
| Operating temperature range | -50 °C ... 125 °C                       |
| Ex-certified accessories    | 1205066 SZS 1,0X4,0 VDE<br>1201442 E/UK |
| Rated voltage               | 275 V                                   |
| Rated insulation voltage    | 250 V                                   |
| output                      | (Permanent)                             |

### Ex level General

|                      |       |
|----------------------|-------|
| Rated current        | 6.3 A |
| Maximum load current | 6.3 A |

### Ex connection data General

|   |  |
|---|--|
| Torque range  | 1.5 Nm ... 1.8 Nm                          |
| Nominal cross section                                 | 16 mm <sup>2</sup>                         |
| Rated cross section AWG                               | 6  |
| Connection capacity rigid                             | 0.5 mm <sup>2</sup> ... 16 mm <sup>2</sup> |
| Connection capacity AWG                               | 20 ... 6                                   |
| Connection capacity flexible                          | 0.5 mm <sup>2</sup> ... 16 mm <sup>2</sup> |
| Connection capacity AWG                               | 20 ... 6                                   |
| 2 conductors with same cross section, solid           | 0.5 mm <sup>2</sup> ... 4 mm <sup>2</sup>  |
| 2 conductors with the same cross-section AWG rigid    | 20 ... 10                                  |
| 2 conductors with same cross section, stranded        | 0.5 mm <sup>2</sup> ... 4 mm <sup>2</sup>  |
| 2 conductors with the same cross-section AWG flexible | 20 ... 10                                  |

## Dimensions

|                    |         |
|--------------------|---------|
| Width              | 12 mm   |
| Height             | 62 mm   |
| Depth on NS 32     | 62.2 mm |
| Depth on NS 35/7,5 | 57.2 mm |
| Depth on NS 35/15  | 64.7 mm |

## Material specifications

|  |       |
|--|-------|
| Color                                  | black |
| Flammability rating according to UL 94 | V2    |
| Insulating material group              | I     |
| Insulating material                    | PA    |

# UK 10-DREHSI-EX (5X20) - Fuse modular terminal block



3073953

<https://www.phoenixcontact.com/de/produkte/3073953>

## Mechanical properties

### Mechanical data

|                 |    |
|-----------------|----|
| Open side panel | No |
|-----------------|----|

## Environmental and real-life conditions

### Ambient conditions

|  |  |
|--|--|
| Ambient temperature (operation)          | -60 °C ... 110 °C (Operating temperature range incl. self-heating; for max. short-term operating temperature, see RTI Elec.) |
| Ambient temperature (storage/transport)  | -25 °C ... 60 °C (for a short time, not exceeding 24 h, -60 °C to +70 °C)  |
| Ambient temperature (assembly)           | -5 °C ... 70 °C  |
| Ambient temperature (actuation)          | -5 °C ... 70 °C  |
| Permissible humidity (operation)         | 20 % ... 90 %  |
| Permissible humidity (storage/transport) | 30 % ... 70 %  |

## Standards and regulations

|                                  |               |
|----------------------------------|---------------|
| Connection in acc. with standard | IEC 60947-7-3 |
|----------------------------------|---------------|

## Mounting

|               |           |
|---------------|-----------|
| Mounting type | NS 35/7,5 |
|               | NS 35/15  |
|               | NS 32     |

# UK 10-DREHSI-EX (5X20) - Fuse modular terminal block

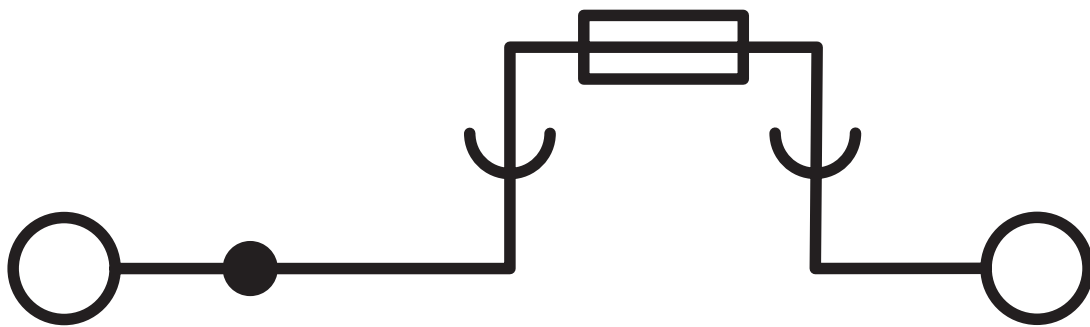


3073953

<https://www.phoenixcontact.com/de/produkte/3073953>

## Drawings

Circuit diagram



# UK 10-DREHSI-EX (5X20) - Fuse modular terminal block



3073953

<https://www.phoenixcontact.com/de/produkte/3073953>

## Approvals

To download certificates, visit the product detail page: <https://www.phoenixcontact.com/de/produkte/3073953>



**EAC**

Approval ID: RU C-DE.BL08.B.00534



**ATEX**

Approval ID: KEMA10ATEX0096U

|  | Nominal voltage $U_N$ | Nominal current $I_N$ | Cross section AWG | Cross section $\text{mm}^2$ |
|--|-----------------------|-----------------------|-------------------|-----------------------------|
|  | 250 V                 | 6.3 A                 | -                 | 0.5 - 16                    |



**IECEX**

Approval ID: IECEXKEM10.0054U

|  | Nominal voltage $U_N$ | Nominal current $I_N$ | Cross section AWG | Cross section $\text{mm}^2$ |
|--|-----------------------|-----------------------|-------------------|-----------------------------|
|  | 250 V                 | 6.3 A                 | -                 | 0.5 - 16                    |



**CCC**

Approval ID: 2020322313000632



**UKCA-EX**

Approval ID: DEKRA 22UKEX6025U

# UK 10-DREHSI-EX (5X20) - Fuse modular terminal block



3073953

<https://www.phoenixcontact.com/de/produkte/3073953>

## Classifications

### ECLASS

|             |          |
|-------------|----------|
| ECLASS-11.0 | 27141116 |
| ECLASS-12.0 | 27141116 |
| ECLASS-13.0 | 27250113 |

### ETIM

|          |          |
|----------|----------|
| ETIM 9.0 | EC000899 |
|----------|----------|

### UNSPSC

|             |          |
|-------------|----------|
| UNSPSC 21.0 | 39121400 |
|-------------|----------|

# UK 10-DREHSI-EX (5X20) - Fuse modular terminal block



3073953

<https://www.phoenixcontact.com/de/produkte/3073953>

## Environmental product compliance

### EU RoHS

|   |                    |
|---|--------------------|
| Fulfills EU RoHS substance requirements | Yes, No exemptions |
|---|--------------------|

### China RoHS

|  |  |
|--|--|
| Environment friendly use period (EFUP) | EFUP-E                                   |
|  | No hazardous substances above the limits |

### EU REACH SVHC

|                                     |                            |
|-------------------------------------|----------------------------|
| REACH candidate substance (CAS No.) | No substance above 0.1 wt% |
|-------------------------------------|----------------------------|



# UK 10-DREHSI-EX (5X20) - Fuse modular terminal block



3073953

<https://www.phoenixcontact.com/de/produkte/3073953>

## Accessories

### NS 32 PERF 2000MM-VPE 10 - DIN rail perforated

1201002

<https://www.phoenixcontact.com/de/produkte/1201002>



DIN rail perforated, Pack of 10 (20 m), acc. to EN 60715, material: Steel, galvanized, passivated with a thick layer, G profile, color: silver

---

### NS 32 UNPERF 2000MM-VPE 10 - DIN rail, unperforated

1201015

<https://www.phoenixcontact.com/de/produkte/1201015>



DIN rail, unperforated, Pack of 10 (20 m), acc. to EN 60715, material: Steel, galvanized, passivated with a thick layer, G profile, color: silver

# UK 10-DREHSI-EX (5X20) - Fuse modular terminal block



3073953

<https://www.phoenixcontact.com/de/produkte/3073953>

## NS 35/ 7,5 PERF 2000MM - DIN rail perforated

0801733

<https://www.phoenixcontact.com/de/produkte/0801733>



DIN rail perforated, Pack of 25 (50 m), acc. to EN 60715, material: Steel, galvanized, passivated with a thick layer, Standard profile, color: silver

---

## NS 35/ 7,5 UNPERF 2000MM - DIN rail, unperforated

0801681

<https://www.phoenixcontact.com/de/produkte/0801681>



DIN rail, unperforated, Pack of 25 (50 m), acc. to EN 60715, material: Steel, galvanized, passivated with a thick layer, Standard profile, color: silver

# UK 10-DREHSI-EX (5X20) - Fuse modular terminal block

3073953

<https://www.phoenixcontact.com/de/produkte/3073953>

## NS 35/ 7,5 WH PERF 2000MM - DIN rail perforated

1204119

<https://www.phoenixcontact.com/de/produkte/1204119>



DIN rail perforated, Pack of 25 (50 m), acc. to EN 60715, material: Steel, Galvanized, white passivated, Standard profile, color: silver

---

## NS 35/ 7,5 WH UNPERF 2000MM-VPE 10 - DIN rail, unperforated

1204122

<https://www.phoenixcontact.com/de/produkte/1204122>



DIN rail, unperforated, Pack of 10 (20 m), acc. to EN 60715, material: Steel, Galvanized, white passivated, Standard profile, color: silver

# UK 10-DREHSI-EX (5X20) - Fuse modular terminal block

3073953

<https://www.phoenixcontact.com/de/produkte/3073953>

## NS 35/ 7,5 AL UNPERF 2000MM - DIN rail, unperforated

0801704

<https://www.phoenixcontact.com/de/produkte/0801704>



DIN rail, unperforated, Pack of 25 (50 m), acc. to EN 60715, material: Aluminum, uncoated, Standard profile, color: silver

---

## NS 35/ 7,5 ZN PERF 2000MM - DIN rail perforated

1206421

<https://www.phoenixcontact.com/de/produkte/1206421>



DIN rail perforated, Pack of 25 (50 m), acc. to EN 60715, material: Steel, galvanized, Standard profile, color: silver

# UK 10-DREHSI-EX (5X20) - Fuse modular terminal block

3073953

<https://www.phoenixcontact.com/de/produkte/3073953>

NS 35/ 7,5 ZN UNPERF 2000MM - DIN rail, unperforated

1206434

<https://www.phoenixcontact.com/de/produkte/1206434>



DIN rail, unperforated, Pack of 25 (50 m), acc. to EN 60715, material: Steel, galvanized, Standard profile, color: silver

---

NS 35/ 7,5 CU UNPERF 2000MM-VPE 10 - DIN rail, unperforated

0801762

<https://www.phoenixcontact.com/de/produkte/0801762>



DIN rail, unperforated, Pack of 10 (20 m), acc. to EN 60715, material: Copper, uncoated, Standard profile, color: copper-colored

# UK 10-DREHSI-EX (5X20) - Fuse modular terminal block

3073953

<https://www.phoenixcontact.com/de/produkte/3073953>

## NS 35/ 7,5 CAP - End cap

1206560

<https://www.phoenixcontact.com/de/produkte/1206560>

DIN rail end piece, for DIN rail NS 35/7.5



---

## NS 35/15 PERF 2000MM - DIN rail perforated

1201730

<https://www.phoenixcontact.com/de/produkte/1201730>



DIN rail perforated, Pack of 25 (50 m), similar to EN 60715, material: Steel, galvanized, passivated with a thick layer, Standard profile, color: silver

# UK 10-DREHSI-EX (5X20) - Fuse modular terminal block

3073953

<https://www.phoenixcontact.com/de/produkte/3073953>

## NS 35/15 UNPERF 2000MM - DIN rail, unperforated

1201714

<https://www.phoenixcontact.com/de/produkte/1201714>



DIN rail, unperforated, Pack of 25 (50 m), similar to EN 60715, material: Steel, galvanized, passivated with a thick layer, Standard profile, color: silver

---

## NS 35/15 WH PERF 2000MM - DIN rail perforated

0806602

<https://www.phoenixcontact.com/de/produkte/0806602>



DIN rail perforated, Pack of 25 (50 m), similar to EN 60715, material: Steel, Galvanized, white passivated, Standard profile, color: white

# UK 10-DREHSI-EX (5X20) - Fuse modular terminal block

3073953

<https://www.phoenixcontact.com/de/produkte/3073953>

## NS 35/15 WH UNPERF 2000MM-VPE 10 - DIN rail, unperforated

1204135

<https://www.phoenixcontact.com/de/produkte/1204135>



DIN rail, unperforated, Pack of 10 (20 m), similar to EN 60715, material: Steel, Galvanized, white passivated, Standard profile, color: silver

---

## NS 35/15 AL UNPERF 2000MM - DIN rail, unperforated

1201756

<https://www.phoenixcontact.com/de/produkte/1201756>



DIN rail, unperforated, similar to EN 60715, material: Aluminum, uncoated, Standard profile, color: silver



# UK 10-DREHSI-EX (5X20) - Fuse modular terminal block

3073953

<https://www.phoenixcontact.com/de/produkte/3073953>

## NS 35/15 ZN PERF 2000MM - DIN rail perforated

1206599

<https://www.phoenixcontact.com/de/produkte/1206599>



DIN rail perforated, Pack of 25 (50 m), similar to EN 60715, material: Steel, galvanized, Standard profile, color: silver

---

## NS 35/15 ZN UNPERF 2000MM - DIN rail, unperforated

1206586

<https://www.phoenixcontact.com/de/produkte/1206586>



DIN rail, unperforated, Pack of 25 (50 m), similar to EN 60715, material: Steel, galvanized, Standard profile, color: silver

# UK 10-DREHSI-EX (5X20) - Fuse modular terminal block



3073953

<https://www.phoenixcontact.com/de/produkte/3073953>

## NS 35/15 CU UNPERF 2000MM-VPE 10 - DIN rail, unperforated

1201895

<https://www.phoenixcontact.com/de/produkte/1201895>



DIN rail, unperforated, Pack of 10 (20 m), similar to EN 60715, material: Copper, uncoated, Standard profile, color: copper-colored

---

## NS 35/15 CAP - End cap

1206573

<https://www.phoenixcontact.com/de/produkte/1206573>

DIN rail end piece, for DIN rail NS 35/15



# UK 10-DREHSI-EX (5X20) - Fuse modular terminal block

3073953

<https://www.phoenixcontact.com/de/produkte/3073953>

## NS 35/15-2,3 UNPERF 2000MM-VPE 10 - DIN rail, unperforated

1201798

<https://www.phoenixcontact.com/de/produkte/1201798>



DIN rail, unperforated, Pack of 10 (20 m), acc. to EN 60715, material: Steel, galvanized, passivated with a thick layer, Standard profile 2.3 mm, color: silver

---

## ZB 6:UNBEDRUCKT - Zack marker strip

1051003

<https://www.phoenixcontact.com/de/produkte/1051003>



Zack marker strip, Strip, white, unlabeled, can be labeled with: PLOTMARK, CMS-P1-PLOTTER, mounting type: snapped, for terminal block width: 6.2 mm, lettering field size: 6.15 x 10.5 mm, Number of individual labels: 10

# UK 10-DREHSI-EX (5X20) - Fuse modular terminal block

3073953

<https://www.phoenixcontact.com/de/produkte/3073953>

## ZB 6 CUS - Zack marker strip

0824992

<https://www.phoenixcontact.com/de/produkte/0824992>



Zack marker strip, can be ordered: Strip, white, labeled according to customer specifications, mounting type: snap into tall marker groove, for terminal block width: 6.2 mm, lettering field size: 6.15 x 10.5 mm, Number of individual labels: 10

---

## ZB 6,LGS:FORTL.ZAHLEN - Zack marker strip

1051016

<https://www.phoenixcontact.com/de/produkte/1051016>



Zack marker strip, Strip, white, labeled, can be labeled with: CMS-P1-PLOTTER, printed horizontally: consecutive numbers 1 ... 10, 11 ... 20, etc. up to 491 ... 500, mounting type: snapped, for terminal block width: 6.2 mm, lettering field size: 6.15 x 10.5 mm, Number of individual labels: 10

# UK 10-DREHSI-EX (5X20) - Fuse modular terminal block

3073953

<https://www.phoenixcontact.com/de/produkte/3073953>

## ZB 6,QR:FORTL.ZAHLEN - Zack marker strip

1051029

<https://www.phoenixcontact.com/de/produkte/1051029>



Zack marker strip, Strip, white, labeled, can be labeled with: CMS-P1-PLOTTER, Printed vertically: consecutive numbers 1 ... 10, 11 ... 20, etc. up to 491 ... 500, mounting type: snapped, for terminal block width: 6.2 mm, lettering field size: 6.15 x 10.5 mm, Number of individual labels: 10

---

## ZB 6,LGS:GLEICHE ZAHLEN - Zack marker strip

1051032

<https://www.phoenixcontact.com/de/produkte/1051032>



Zack marker strip, Strip, white, labeled, can be labeled with: CMS-P1-PLOTTER, printed horizontally: Identical numbers 1 or 2, etc. up to 100, mounting type: snapped, for terminal block width: 6.2 mm, lettering field size: 6.15 x 10.5 mm, Number of individual labels: 10

# UK 10-DREHSI-EX (5X20) - Fuse modular terminal block

3073953

<https://www.phoenixcontact.com/de/produkte/3073953>

## ZB 6,LGS:L1-N,PE - Marker for terminal blocks

1051414

<https://www.phoenixcontact.com/de/produkte/1051414>



Marker for terminal blocks, Strip, white, labeled, can be labeled with: CMS-P1-PLOTTER, horizontal: L1, L2, L3, N, PE, L1, L2, L3, N, PE, mounting type: snapped, for terminal block width: 6.2 mm, lettering field size: 6.15 x 10.5 mm, Number of individual labels: 10

---

## ZB 6,LGS:U-N - Marker for terminal blocks

1051430

<https://www.phoenixcontact.com/de/produkte/1051430>



Marker for terminal blocks, Strip, white, labeled, can be labeled with: CMS-P1-PLOTTER, printed horizontally: U, V, W, N, GND, U, V, W, N, GND, mounting type: snapped, for terminal block width: 6.2 mm, lettering field size: 6.15 x 10.5 mm, Number of individual labels: 10

# UK 10-DREHSI-EX (5X20) - Fuse modular terminal block



3073953

<https://www.phoenixcontact.com/de/produkte/3073953>

## UC-TM 6 - Marker for terminal blocks

0818085

<https://www.phoenixcontact.com/de/produkte/0818085>



Marker for terminal blocks, Sheet, white, unlabeled, can be labeled with: BLUEMARK ID COLOR, BLUEMARK ID, BLUEMARK CLED, PLOTMARK, CMS-P1-PLOTTER, mounting type: snapped, for terminal block width: 6.2 mm, lettering field size: 5.6 x 10.5 mm, Number of individual labels: 80

---

## UC-TM 6 CUS - Marker for terminal blocks

0824589

<https://www.phoenixcontact.com/de/produkte/0824589>



Marker for terminal blocks, can be ordered: by sheet, white, labeled according to customer specifications, mounting type: snap into tall marker groove, for terminal block width: 6.2 mm, lettering field size: 5.6 x 10.5 mm, Number of individual labels: 80

# UK 10-DREHSI-EX (5X20) - Fuse modular terminal block

3073953

<https://www.phoenixcontact.com/de/produkte/3073953>

## UCT-TM 6 - Marker for terminal blocks

0828736

<https://www.phoenixcontact.com/de/produkte/0828736>



Marker for terminal blocks, Sheet, white, unlabeled, can be labeled with: TOPMARK NEO, TOPMARK LASER, BLUEMARK ID COLOR, BLUEMARK ID, BLUEMARK CLED, THERMOMARK PRIME, THERMOMARK CARD 2.0, THERMOMARK CARD, mounting type: snapped, for terminal block width: 6.2 mm, lettering field size: 5.6 x 10.5 mm, Number of individual labels: 60

---

## UCT-TM 6 CUS - Marker for terminal blocks

0829602

<https://www.phoenixcontact.com/de/produkte/0829602>



Marker for terminal blocks, can be ordered: by sheet, white, labeled according to customer specifications, mounting type: snap into tall marker groove, for terminal block width: 6.2 mm, lettering field size: 5.6 x 10.5 mm, Number of individual labels: 60



# UK 10-DREHSI-EX (5X20) - Fuse modular terminal block

3073953

<https://www.phoenixcontact.com/de/produkte/3073953>

## CLIPFIX 35 - End bracket

3022218

<https://www.phoenixcontact.com/de/produkte/3022218>



Quick mounting end clamp for NS 35/7,5 DIN rail or NS 35/15 DIN rail, with marking option, width: 9.5 mm, color: gray

---

## CLIPFIX 35-5 - End bracket

3022276

<https://www.phoenixcontact.com/de/produkte/3022276>



Quick mounting end clamp for NS 35/7,5 DIN rail or NS 35/15 DIN rail, with marking option, with parking option for FBS...5, FBS...6, KSS 5, KSS 6, width: 5.15 mm, color: gray

# UK 10-DREHSI-EX (5X20) - Fuse modular terminal block

3073953

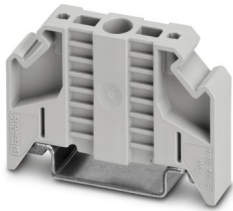
<https://www.phoenixcontact.com/de/produkte/3073953>

## E/NS 35 N - End bracket

0800886

<https://www.phoenixcontact.com/de/produkte/0800886>

End clamp, width: 9.5 mm, color: gray



---

## E/UK - End bracket

1201442

<https://www.phoenixcontact.com/de/produkte/1201442>

End bracket, Mounting on a DIN rail NS 32 or NS 35, material: PA, color: gray



# UK 10-DREHSI-EX (5X20) - Fuse modular terminal block



3073953

<https://www.phoenixcontact.com/de/produkte/3073953>

E/UK 1 - End bracket

1201413

<https://www.phoenixcontact.com/de/produkte/1201413>



End clamps, for supporting the ends of double-level and three-level terminal blocks, width: 10 mm, color: gray

---

SZS 1,0X4,0 VDE - Screwdriver

1205066

<https://www.phoenixcontact.com/de/produkte/1205066>



Screwdriver, slot-headed, VDE insulated, size: 1.0 x 4.0 x 100 mm, 2-component grip, with non-slip grip

---

Phoenix Contact 2024 © - all rights reserved  
<https://www.phoenixcontact.com>

PHOENIX CONTACT Deutschland GmbH  
Flachsmarktstraße 8  
D-32825 Blomberg  
+49 52 35/3-1 20 00  
[info@phoenixcontact.de](mailto:info@phoenixcontact.de)