

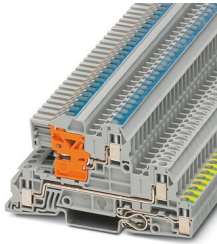
# Installation ground terminal block - UTI 2,5-PE/L/NT



3076028

<https://www.phoenixcontact.com/de/produkte/3076028>

Please be informed that the data shown in this PDF document is generated from our Online Catalog. Please find the complete data in the user documentation. Our General Terms of Use for Downloads are valid.



## Installation ground terminal block, **Assembly instructions:**

For secure fastening of the neutral busbar, supports must be set at the beginning and end of each terminal strip as well as every 20 cm on longer terminal strips., nom. voltage: 400 V, nominal current: 24 A, Screw connection, 1st, 2nd and 3rd level, Rated cross section: 4 mm<sup>2</sup>, cross section: 0.2 mm<sup>2</sup> - 4 mm<sup>2</sup>, mounting type: NS 35/7,5, NS 35/15, color: gray

## Your advantages

- The installation terminal block features a particularly low-profile design and is suitable for wiring in flat installation distributors
- The asymmetrical arrangement of the terminal blocks on the DIN rail enables the neutral busbar to be routed past the terminal blocks

## Commercial Data

Item number	3076028
Packing unit	50 pc
Minimum order quantity	1 pc
Sales Key	A1 - Reihenklennen
Product Key	BE1153
Catalog Page	Page 154 (C-1-2019)
GTIN	4046356644013
Weight per Piece (including packing)	19,634 g
Weight per Piece (excluding packing)	19,634 g
Customs tariff number	85369010
Country of origin	DE

## Technical Data

### Notes

General	<b>Assembly instructions:</b> For secure fastening of the neutral busbar, supports must be set at the beginning and end of each terminal strip as well as every 20 cm on longer terminal strips.
---------	---

### Product properties

Product type	Ground terminal block
Number of positions	1
Number of connections	5
Number of rows	3
Potentials	2

### Insulation characteristics

Overvoltage category	III
Degree of pollution	3

### Electrical properties

Rated surge voltage	4 kV
	6 kV
Maximum power dissipation for nominal condition	1.02 W
Current carrying capacity of the neutral busbar	140 A

### Connection data

Grounding foot	Yes
Number of connections per level	2
Nominal cross section	4 mm <sup>2</sup>

### 1st, 2nd and 3rd level

Screw thread	M3
Note	Please observe the current carrying capacity of the DIN rails.
Tightening torque	0.5 ... 0.6 Nm
Stripping length	9 mm
Internal cylindrical gage	A3
Conductor cross section solid	0.2 mm <sup>2</sup> ... 4 mm <sup>2</sup>
Cross section AWG	24 ... 12 (converted acc. to IEC)
Conductor cross section flexible	0.2 mm <sup>2</sup> ... 4 mm <sup>2</sup>
Conductor cross section, flexible [AWG]	24 ... 12 (converted acc. to IEC)
Flexible conductor cross section flexible (ferrule, w/o plastic sleeve)	0.25 mm <sup>2</sup> ... 2.5 mm <sup>2</sup>
Flexible conductor cross section (ferrule with plastic sleeve)	0.25 mm <sup>2</sup> ... 2.5 mm <sup>2</sup>
2 conductors with same cross section, solid	0.2 mm <sup>2</sup> ... 1.5 mm <sup>2</sup>
2 conductors with same cross section, flexible	0.2 mm <sup>2</sup> ... 1.5 mm <sup>2</sup>

# Installation ground terminal block - UTI 2,5-PE/L/NT



3076028

<https://www.phoenixcontact.com/de/produkte/3076028>

2 conductors with same cross section, flexible, with ferrule without plastic sleeve	0.25 mm <sup>2</sup> ... 0.75 mm <sup>2</sup>
2 conductors with the same cross section, flexible, with TWIN ferrule with plastic sleeve	0.5 mm <sup>2</sup> ... 0.75 mm <sup>2</sup>
Nominal current	24 A (with 4 mm <sup>2</sup> conductor cross section)
Maximum load current	30 A (with 4 mm <sup>2</sup> conductor cross section and 3-pos. terminal block)
Nominal voltage	400 V (phase conductor/phase conductor)
	250 V (phase conductor/PE)
	250 V (phase conductor/N)
Nominal cross section	4 mm <sup>2</sup>

## Dimensions

Width	5.2 mm
End cover width	2.2 mm
Height NS 35/15	59 mm
Height NS 35/7,5	51.5 mm
Length	93.5 mm

## Material specifications

Color	gray
Flammability rating according to UL 94	V0
Insulating material group	I
Insulating material	PA
Static insulating material application in cold	-60 °C
Temperature index of insulation material (DIN EN 60216-1 (VDE 0304-21))	125 °C
Relative insulation material temperature index (Elec., UL 746 B)	130 °C
Fire protection for rail vehicles (DIN EN 45545-2) R22	HL 1 - HL 3
Fire protection for rail vehicles (DIN EN 45545-2) R23	HL 1 - HL 3
Fire protection for rail vehicles (DIN EN 45545-2) R24	HL 1 - HL 3
Fire protection for rail vehicles (DIN EN 45545-2) R26	HL 1 - HL 3
Calorimetric heat release NFPA 130 (ASTM E 1354)	27,5 MJ/kg
Surface flammability NFPA 130 (ASTM E 162)	passed
Specific optical density of smoke NFPA 130 (ASTM E 662)	passed
Smoke gas toxicity NFPA 130 (SMP 800C)	passed

## Electrical tests

### Surge voltage test

Test voltage setpoint	7.3 kV
Result	Test passed

### Temperature-rise test

Requirement temperature-rise test	Increase in temperature ≤ 45 K
Result	Test passed

# Installation ground terminal block - UTI 2,5-PE/L/NT



3076028

<https://www.phoenixcontact.com/de/produkte/3076028>

Short-time withstand current 2.5 mm <sup>2</sup>	0.3 kA
Short-time withstand current 4 mm <sup>2</sup>	0.48 kA
Result	Test passed

## Power-frequency withstand voltage

Test voltage setpoint	1.89 kV
Result	Test passed

## Mechanical properties

### Mechanical data

Open side panel	Yes
-----------------	-----

## Mechanical tests

### Mechanical strength

Result	Test passed
--------	-------------

### Attachment on the carrier

DIN rail/fixing support	NS 35
Test force setpoint	1 N
Result	Test passed

### Test for conductor damage and slackening

Rotation speed	10 rpm
Revolutions	135
Conductor cross section/weight	0.2 mm <sup>2</sup> / 0.2 kg
	2.5 mm <sup>2</sup> / 0.7 kg
	4 mm <sup>2</sup> / 0.9 kg
Result	Test passed

## Environmental and real-life conditions

### Aging

Temperature cycles	192
Result	Test passed

### Needle-flame test

Time of exposure	30 s
Result	Test passed

### Oscillation/broadband noise

Specification	DIN EN 50155 (VDE 0115-200):2008-03
Spectrum	Service life test category 2, bogie-mounted
Frequency	f <sub>1</sub> = 5 Hz to f <sub>2</sub> = 250 Hz
ASD level	6.12 (m/s <sup>2</sup> ) <sup>2</sup> /Hz
Acceleration	3.12g
Test duration per axis	5 h

# Installation ground terminal block - UTI 2,5-PE/L/NT



3076028

<https://www.phoenixcontact.com/de/produkte/3076028>

Test directions	X-, Y- and Z-axis
Result	Test passed

## Shocks

Specification	DIN EN 50155 (VDE 0115-200):2008-03
Pulse shape	Half-sine
Acceleration	30g
Shock duration	18 ms
Number of shocks per direction	3
Test directions	X-, Y- and Z-axis (pos. and neg.)
Result	Test passed

## Ambient conditions

Ambient temperature (operation)	-60 °C ... 105 °C (max. short-term operating temperature RTI Elec.)
Ambient temperature (storage/transport)	-25 °C ... 60 °C (for a short time, not exceeding 24 h, -60 °C to +70 °C)
Ambient temperature (assembly)	-5 °C ... 70 °C
Permissible humidity (storage/transport)	30 % ... 70 %

## Mounting

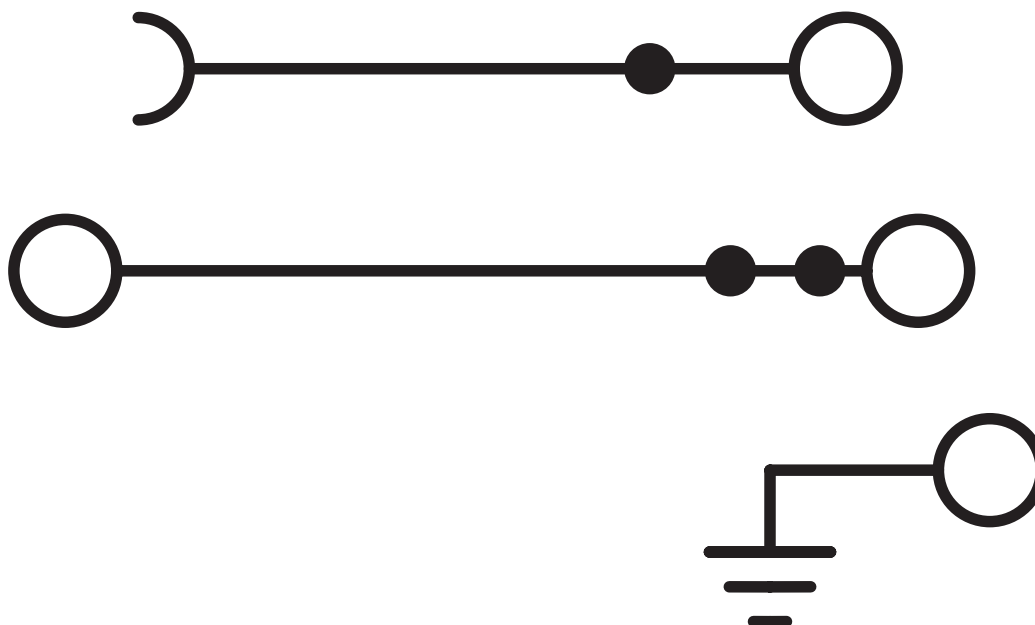
Mounting type	NS 35/7,5
	NS 35/15

3076028

<https://www.phoenixcontact.com/de/produkte/3076028>

## Drawings

Circuit diagram




# Installation ground terminal block - UTI 2,5-PE/L/NT





3076028


<https://www.phoenixcontact.com/de/produkte/3076028>

## Approvals

 <b>CSA</b> Approval ID: 13631				
	Nominal Voltage $U_N$	Nominal Current $I_N$	Cross Section AWG	Cross Section $mm^2$
Use group B	300 V		24 - 12	-
Use group D	300 V		24 - 12	-

 <b>IECEE CB Scheme</b> Approval ID: DE1-62830				
--	--	--	--	--

 <b>EAC</b> Approval ID: RU C-DE.BL08.B.00534				
---	--	--	--	--

 <b>cULus Recognized</b> Approval ID: E60425				
	Nominal Voltage $U_N$	Nominal Current $I_N$	Cross Section AWG	Cross Section $mm^2$
Use group B	300 V	20 A	26 - 12	-
Multi-conductor connection	300 V	20 A	26 - 16	-
PE connection			26 - 12	-
Use group C				
PE connection			26 - 12	-
Use group D	300 V	10 A	26 - 12	-
PE connection			26 - 12	-

 <b>VDE Zeichengenehmigung</b> Approval ID: 40040774				
--	--	--	--	--

# Installation ground terminal block - UTI 2,5-PE/L/NT



3076028

<https://www.phoenixcontact.com/de/produkte/3076028>

## Classifications

### ECLASS

ECLASS-9.0	27141125
ECLASS-10.0.1	27141125
ECLASS-11.0	27141125

### ETIM

ETIM 8.0	EC001329
----------	----------

### UNSPSC

UNSPSC 21.0	39121400
-------------	----------



# Installation ground terminal block - UTI 2,5-PE/L/NT



3076028

<https://www.phoenixcontact.com/de/produkte/3076028>


## Environmental Product Compliance

China RoHS	Environmentally friendly use period: unlimited = EFUP-e
	No hazardous substances above threshold values

3076028

<https://www.phoenixcontact.com/de/produkte/3076028>

## Accessories

 Note: Applying some accessories below might limit this product.


### Plug-in bridge

Plug-in bridge - FBS 2-5 - 3030161

<https://www.phoenixcontact.com/de/produkte/3030161>



Plug-in bridge, pitch: 5.2 mm, color: red

 Max. current carrying capacity: 24 A

---

### Plug-in bridge

Plug-in bridge - FBS 3-5 - 3030174

<https://www.phoenixcontact.com/de/produkte/3030174>



Plug-in bridge, pitch: 5.2 mm, color: red

 Max. current carrying capacity: 24 A

# Installation ground terminal block - UTI 2,5-PE/L/NT

3076028

<https://www.phoenixcontact.com/de/produkte/3076028>

## Plug-in bridge

Plug-in bridge - FBS 4-5 - 3030187

<https://www.phoenixcontact.com/de/produkte/3030187>



Plug-in bridge, pitch: 5.2 mm, color: red

 Max. current carrying capacity: 24 A

---

## Plug-in bridge

Plug-in bridge - FBS 5-5 - 3030190

<https://www.phoenixcontact.com/de/produkte/3030190>



Plug-in bridge, pitch: 5.2 mm, color: red

 Max. current carrying capacity: 24 A

---

# Installation ground terminal block - UTI 2,5-PE/L/NT

3076028

<https://www.phoenixcontact.com/de/produkte/3076028>

## Plug-in bridge

Plug-in bridge - FBS 10-5 - 3030213

<https://www.phoenixcontact.com/de/produkte/3030213>



Plug-in bridge, pitch: 5.2 mm, color: red

 Max. current carrying capacity: 24 A

---


## Plug-in bridge

Plug-in bridge - FBS 20-5 - 3030226

<https://www.phoenixcontact.com/de/produkte/3030226>



Plug-in bridge, pitch: 5.2 mm, color: red

 Max. current carrying capacity: 24 A

---

# Installation ground terminal block - UTI 2,5-PE/L/NT

3076028

<https://www.phoenixcontact.com/de/produkte/3076028>

## Plug-in bridge

Plug-in bridge - FBS 50-5 - 3038930

<https://www.phoenixcontact.com/de/produkte/3038930>



Plug-in bridge, pitch: 5.2 mm, color: red

 Max. current carrying capacity: 24 A

The nominal voltage of the jumper is 400 V

---


## Plug-in bridge

Plug-in bridge - FBSR 2-5 - 3033702

<https://www.phoenixcontact.com/de/produkte/3033702>



Plug-in bridge, pitch: 5.2 mm, color: red

 Max. current carrying capacity: 17.5 A

# Installation ground terminal block - UTI 2,5-PE/L/NT

3076028

<https://www.phoenixcontact.com/de/produkte/3076028>

## Plug-in bridge

Plug-in bridge - FBSR 3-5 - 3001591

<https://www.phoenixcontact.com/de/produkte/3001591>



Plug-in bridge, pitch: 5.2 mm, color: red

 Max. current carrying capacity: 17.5 A

---

## Plug-in bridge

Plug-in bridge - FBSR 4-5 - 3001592

<https://www.phoenixcontact.com/de/produkte/3001592>



Plug-in bridge, pitch: 5.2 mm, color: red

 Max. current carrying capacity: 17.5 A

---

# Installation ground terminal block - UTI 2,5-PE/L/NT

3076028

<https://www.phoenixcontact.com/de/produkte/3076028>


## Plug-in bridge

Plug-in bridge - FBSR 5-5 - 3001593

<https://www.phoenixcontact.com/de/produkte/3001593>



Plug-in bridge, pitch: 5.2 mm, color: red

 Max. current carrying capacity: 17.5 A

---


## Plug-in bridge

Plug-in bridge - FBSR 10-5 - 3033710

<https://www.phoenixcontact.com/de/produkte/3033710>



Plug-in bridge, pitch: 5.2 mm, color: red

 Max. current carrying capacity: 17.5 A

---

# Installation ground terminal block - UTI 2,5-PE/L/NT

3076028

<https://www.phoenixcontact.com/de/produkte/3076028>

## Plug-in bridge

Plug-in bridge - FBS 2-5 BU - 3036877

<https://www.phoenixcontact.com/de/produkte/3036877>



Plug-in bridge, pitch: 5.2 mm, color: blue

 Max. current carrying capacity: 24 A

---

## Plug-in bridge

Plug-in bridge - FBS 3-5 BU - 3036880

<https://www.phoenixcontact.com/de/produkte/3036880>



Plug-in bridge, pitch: 5.2 mm, color: blue

 Max. current carrying capacity: 24 A

---



# Installation ground terminal block - UTI 2,5-PE/L/NT

3076028

<https://www.phoenixcontact.com/de/produkte/3076028>

## Plug-in bridge

Plug-in bridge - FBS 4-5 BU - 3036893

<https://www.phoenixcontact.com/de/produkte/3036893>



Plug-in bridge, pitch: 5.2 mm, color: blue

 Max. current carrying capacity: 24 A

---

## Plug-in bridge

Plug-in bridge - FBS 5-5 BU - 3036903

<https://www.phoenixcontact.com/de/produkte/3036903>



Plug-in bridge, pitch: 5.2 mm, color: blue

 Max. current carrying capacity: 24 A

---

# Installation ground terminal block - UTI 2,5-PE/L/NT

3076028

<https://www.phoenixcontact.com/de/produkte/3076028>

## Plug-in bridge

Plug-in bridge - FBS 10-5 BU - 3036916

<https://www.phoenixcontact.com/de/produkte/3036916>



Plug-in bridge, pitch: 5.2 mm, color: blue

 Max. current carrying capacity: 24 A

---

## Plug-in bridge

Plug-in bridge - FBS 20-5 BU - 3036929

<https://www.phoenixcontact.com/de/produkte/3036929>



Plug-in bridge, pitch: 5.2 mm, color: blue

 Max. current carrying capacity: 24 A

---

# Installation ground terminal block - UTI 2,5-PE/L/NT

3076028

<https://www.phoenixcontact.com/de/produkte/3076028>

## Plug-in bridge

Plug-in bridge - FBS 50-5 BU - 3032114

<https://www.phoenixcontact.com/de/produkte/3032114>



Plug-in bridge, Version with single- or double-sided cutting edge. Please keep in mind the possible impact on touch protection as well as air clearances and creepage distances., pitch: 5.2 mm, color: blue

 Max. current carrying capacity: 24 A

---

## Screwdriver

Screwdriver - SZS 0,6X3,5 - 1205053

<https://www.phoenixcontact.com/de/produkte/1205053>



Actuation tool, for ST terminal blocks, insulated, also suitable for use as a bladed screwdriver, size: 0.6 x 3.5 x 100 mm, 2-component grip, with non-slip grip

# Installation ground terminal block - UTI 2,5-PE/L/NT

3076028

<https://www.phoenixcontact.com/de/produkte/3076028>

## Neutral busbar

Neutral busbar - NLS-CU 3/10 SN 1000MM - 0402174

<https://www.phoenixcontact.com/de/produkte/0402174>



Neutral busbar, DIN VDE 0611-4: 1991-02, material: Copper, tin-plated, color: silver

---

## Connection terminal block

Connection terminal block - AKG 16 BU - 0423014

<https://www.phoenixcontact.com/de/produkte/0423014>



Connection terminal block, nominal current: 76 A, connection method: Screw connection, Rated cross section: 16 mm<sup>2</sup>, cross section: 1.5 mm<sup>2</sup> - 16 mm<sup>2</sup>, mounting: Neutral busbar, color: blue

# Installation ground terminal block - UTI 2,5-PE/L/NT

3076028

<https://www.phoenixcontact.com/de/produkte/3076028>

## Connection terminal block

Connection terminal block - AKG 35 BU - 0424013

<https://www.phoenixcontact.com/de/produkte/0424013>



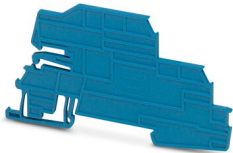
Connection terminal block, nom. voltage: 300 V, nominal current: 125 A, connection method: Screw connection, Rated cross section: 35 mm<sup>2</sup>, cross section: 2.5 mm<sup>2</sup> - 35 mm<sup>2</sup>, mounting: Neutral busbar, color: blue

---

## Support bracket

Support bracket - AB-UTI/3 - 3076038

<https://www.phoenixcontact.com/de/produkte/3076038>



Support bracket, Bracket for busbars, set every 20 cm, pitch: 200 mm, length: 93.5 mm, width: 2.2 mm, height: 51.2 mm, number of positions: 1, color: blue

# Installation ground terminal block - UTI 2,5-PE/L/NT

3076028

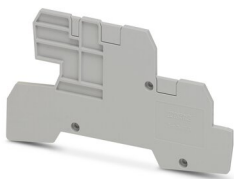
<https://www.phoenixcontact.com/de/produkte/3076028>

## End cover

End cover - D-UTI/3 - 3076036

<https://www.phoenixcontact.com/de/produkte/3076036>

End cover, length: 93.5 mm, width: 2.2 mm, height: 51.2 mm, color: gray



---

## Partition plate

Partition plate - ATP-PTI/3 - 3213990

<https://www.phoenixcontact.com/de/produkte/3213990>

Partition plate, length: 103 mm, width: 2.2 mm, height: 49.3 mm, color: gray



# Installation ground terminal block - UTI 2,5-PE/L/NT

3076028

<https://www.phoenixcontact.com/de/produkte/3076028>

## Cover profile

Cover profile - AP-NLS N - 1013634

<https://www.phoenixcontact.com/de/produkte/1013634>



Cover profile, length: 300 mm, color: transparent

---

## Screwdriver

Screwdriver - SF-SL 0,6X3,5-100 S-VDE - 1212587

<https://www.phoenixcontact.com/de/produkte/1212587>



Actuation tool, for ST terminal blocks, VDE insulated, with slimmer insulation integrated in the blade, also suitable for use as a bladed screwdriver, size: 0.6 x 3.5 x 100 mm, 2-component grip, with non-slip grip

# Installation ground terminal block - UTI 2,5-PE/L/NT

3076028

<https://www.phoenixcontact.com/de/produkte/3076028>

## DIN rail perforated

DIN rail perforated - NS 35/ 7,5 PERF 2000MM - 0801733

<https://www.phoenixcontact.com/de/produkte/0801733>



DIN rail perforated, acc. to EN 60715, material: Steel, galvanized, passivated with a thick layer, Standard profile, color: silver, Pack of 25 (50 m)

---

## DIN rail, unperforated

DIN rail, unperforated - NS 35/ 7,5 UNPERF 2000MM - 0801681

<https://www.phoenixcontact.com/de/produkte/0801681>



DIN rail, unperforated, acc. to EN 60715, material: Steel, galvanized, passivated with a thick layer, Standard profile, color: silver, Pack of 25 (50 m)



# Installation ground terminal block - UTI 2,5-PE/L/NT

3076028

<https://www.phoenixcontact.com/de/produkte/3076028>

## DIN rail perforated

DIN rail perforated - NS 35/ 7,5 WH PERF 2000MM - 1204119

<https://www.phoenixcontact.com/de/produkte/1204119>



DIN rail perforated, acc. to EN 60715, material: Steel, Galvanized, white passivated, Standard profile, color: silver, Pack of 25 (50 m)

---

## DIN rail, unperforated

DIN rail, unperforated - NS 35/ 7,5 WH UNPERF 2000MM-VPE 10 - 1204122

<https://www.phoenixcontact.com/de/produkte/1204122>



DIN rail, unperforated, acc. to EN 60715, material: Steel, Galvanized, white passivated, Standard profile, color: silver, Pack of 10 (20 m)

# Installation ground terminal block - UTI 2,5-PE/L/NT

3076028

<https://www.phoenixcontact.com/de/produkte/3076028>

## DIN rail, unperforated

DIN rail, unperforated - NS 35/ 7,5 AL UNPERF 2000MM - 0801704

<https://www.phoenixcontact.com/de/produkte/0801704>



DIN rail, unperforated, acc. to EN 60715, material: Aluminum, uncoated, Standard profile, color: silver, Pack of 25 (50 m)

---

## DIN rail perforated

DIN rail perforated - NS 35/ 7,5 ZN PERF 2000MM - 1206421

<https://www.phoenixcontact.com/de/produkte/1206421>



DIN rail perforated, acc. to EN 60715, material: Steel, galvanized, Standard profile, color: silver, Pack of 25 (50 m)

# Installation ground terminal block - UTI 2,5-PE/L/NT

3076028

<https://www.phoenixcontact.com/de/produkte/3076028>

## DIN rail, unperforated

DIN rail, unperforated - NS 35/ 7,5 ZN UNPERF 2000MM - 1206434

<https://www.phoenixcontact.com/de/produkte/1206434>



DIN rail, unperforated, acc. to EN 60715, material: Steel, galvanized, Standard profile, color: silver, Pack of 25 (50 m)

---

## DIN rail, unperforated

DIN rail, unperforated - NS 35/ 7,5 CU UNPERF 2000MM-VPE 10 - 0801762

<https://www.phoenixcontact.com/de/produkte/0801762>



DIN rail, unperforated, acc. to EN 60715, material: Copper, uncoated, Standard profile, color: copper-colored, Pack of 10 (20 m)

# Installation ground terminal block - UTI 2,5-PE/L/NT

3076028

<https://www.phoenixcontact.com/de/produkte/3076028>

## End cap

End cap - NS 35/ 7,5 CAP - 1206560

<https://www.phoenixcontact.com/de/produkte/1206560>

DIN rail end piece, for DIN rail NS 35/7.5



---

## DIN rail perforated

DIN rail perforated - NS 35/15 PERF 2000MM - 1201730

<https://www.phoenixcontact.com/de/produkte/1201730>



DIN rail perforated, similar to EN 60715, material: Steel, galvanized, passivated with a thick layer, Standard profile, color: silver, Pack of 25 (50 m)

# Installation ground terminal block - UTI 2,5-PE/L/NT

3076028

<https://www.phoenixcontact.com/de/produkte/3076028>

## DIN rail, unperforated

DIN rail, unperforated - NS 35/15 UNPERF 2000MM - 1201714

<https://www.phoenixcontact.com/de/produkte/1201714>



DIN rail, unperforated, similar to EN 60715, material: Steel, galvanized, passivated with a thick layer, Standard profile, color: silver, Pack of 25 (50 m)

---

## DIN rail perforated

DIN rail perforated - NS 35/15 WH PERF 2000MM - 0806602

<https://www.phoenixcontact.com/de/produkte/0806602>



DIN rail perforated, similar to EN 60715, material: Steel, Galvanized, white passivated, Standard profile, color: white, Pack of 25 (50 m)

# Installation ground terminal block - UTI 2,5-PE/L/NT

3076028

<https://www.phoenixcontact.com/de/produkte/3076028>

## DIN rail, unperforated

DIN rail, unperforated - NS 35/15 WH UNPERF 2000MM-VPE 10 - 1204135

<https://www.phoenixcontact.com/de/produkte/1204135>



DIN rail, unperforated, similar to EN 60715, material: Steel, Galvanized, white passivated, Standard profile, color: silver, Pack of 10 (20 m)

---

## DIN rail, unperforated

DIN rail, unperforated - NS 35/15 AL UNPERF 2000MM - 1201756

<https://www.phoenixcontact.com/de/produkte/1201756>



DIN rail, unperforated, similar to EN 60715, material: Aluminum, uncoated, Standard profile, color: silver

# Installation ground terminal block - UTI 2,5-PE/L/NT

3076028

<https://www.phoenixcontact.com/de/produkte/3076028>

## DIN rail perforated

DIN rail perforated - NS 35/15 ZN PERF 2000MM - 1206599

<https://www.phoenixcontact.com/de/produkte/1206599>



DIN rail perforated, similar to EN 60715, material: Steel, galvanized, Standard profile, color: silver, Pack of 25 (50 m)

---

## DIN rail, unperforated

DIN rail, unperforated - NS 35/15 ZN UNPERF 2000MM - 1206586

<https://www.phoenixcontact.com/de/produkte/1206586>



DIN rail, unperforated, similar to EN 60715, material: Steel, galvanized, Standard profile, color: silver, Pack of 25 (50 m)

# Installation ground terminal block - UTI 2,5-PE/L/NT

3076028

<https://www.phoenixcontact.com/de/produkte/3076028>

## DIN rail, unperforated

DIN rail, unperforated - NS 35/15 CU UNPERF 2000MM-VPE 10 - 1201895

<https://www.phoenixcontact.com/de/produkte/1201895>



DIN rail, unperforated, similar to EN 60715, material: Copper, uncoated, Standard profile, color: copper-colored, Pack of 10 (20 m)

---

## End cap

End cap - NS 35/15 CAP - 1206573

<https://www.phoenixcontact.com/de/produkte/1206573>

DIN rail end piece, for DIN rail NS 35/15





# Installation ground terminal block - UTI 2,5-PE/L/NT

3076028

<https://www.phoenixcontact.com/de/produkte/3076028>

## DIN rail, unperforated

DIN rail, unperforated - NS 35/15-2,3 UNPERF 2000MM-VPE 10 - 1201798

<https://www.phoenixcontact.com/de/produkte/1201798>



DIN rail, unperforated, acc. to EN 60715, material: Steel, galvanized, passivated with a thick layer, Standard profile 2.3 mm, color: silver, Pack of 10 (20 m)

---

## Zack Marker strip, flat

Zack Marker strip, flat - ZBF 5:UNBEDRUCKT - 0808642

<https://www.phoenixcontact.com/de/produkte/0808642>



Zack Marker strip, flat, Strip, white, unlabeled, can be labeled with: PLOTMARK, CMS-P1-PLOTTER, mounting type: snapped, for terminal block width: 5 mm, lettering field size: 5.1 x 5.2 mm, Number of individual labels: 10

3076028

<https://www.phoenixcontact.com/de/produkte/3076028>

## Zack Marker strip, flat

Zack Marker strip, flat - ZBF 5 CUS - 0825025

<https://www.phoenixcontact.com/de/produkte/0825025>



Zack Marker strip, flat, can be ordered: Strip, white, labeled according to customer specifications, mounting type: snap into flat marker groove, for terminal block width: 5 mm, lettering field size: 5.15 x 5.15 mm, Number of individual labels: 10

---

## Zack Marker strip, flat

Zack Marker strip, flat - ZBF 5,LGS:FORTL.ZAHLEN - 0808671

<https://www.phoenixcontact.com/de/produkte/0808671>



Zack Marker strip, flat, Strip, white, labeled, printed horizontally: consecutive numbers 1 ... 10, 11 ... 20, etc. up to 491 ... 500, mounting type: snapped, for terminal block width: 5 mm, lettering field size: 5.15 x 5.15 mm, Number of individual labels: 10

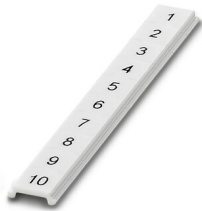
3076028

<https://www.phoenixcontact.com/de/produkte/3076028>

## Zack Marker strip, flat

Zack Marker strip, flat - ZBF 5,QR:FORTL.ZAHLEN - 0808697

<https://www.phoenixcontact.com/de/produkte/0808697>



Zack Marker strip, flat, Strip, white, labeled, Printed vertically: consecutive numbers 1 ... 10, 11 ... 20, etc. up to 91 ... 100, mounting type: snapped, for terminal block width: 5 mm, lettering field size: 5.15 x 5.15 mm, Number of individual labels: 10

---

## Zack Marker strip, flat

Zack Marker strip, flat - ZBF 5,LGS:GERADE ZAHLEN - 0810821

<https://www.phoenixcontact.com/de/produkte/0810821>



Zack Marker strip, flat, Strip, white, labeled, printed horizontally: consecutive even numbers 2 ... 20, 22 ... 40, etc. up to 82 ... 100, mounting type: snapped, for terminal block width: 5 mm, lettering field size: 5.15 x 5.15 mm, Number of individual labels: 10

# Installation ground terminal block - UTI 2,5-PE/L/NT

3076028

<https://www.phoenixcontact.com/de/produkte/3076028>

## Zack Marker strip, flat

Zack Marker strip, flat - ZBF 5,LGS:UNGERADE ZAHLEN - 0810863

<https://www.phoenixcontact.com/de/produkte/0810863>



Zack Marker strip, flat, Strip, white, labeled, printed horizontally: Odd numbers 1 - 19, 21 - 39, etc. up to 81 - 99, mounting type: snapped, for terminal block width: 5 mm, lettering field size: 5.15 x 5.15 mm, Number of individual labels: 10

---

## Marker for terminal blocks

Marker for terminal blocks - UC-TMF 5 - 0818153

<https://www.phoenixcontact.com/de/produkte/0818153>



Marker for terminal blocks, Sheet, white, unlabeled, can be labeled with: BLUEMARK ID COLOR, BLUEMARK ID, BLUEMARK CLED, PLOTMARK, CMS-P1-PLOTTER, mounting type: snapped, for terminal block width: 5.2 mm, lettering field size: 4.6 x 5.1 mm, Number of individual labels: 96

# Installation ground terminal block - UTI 2,5-PE/L/NT

3076028

<https://www.phoenixcontact.com/de/produkte/3076028>

## Marker for terminal blocks

Marker for terminal blocks - UC-TMF 5 CUS - 0824638

<https://www.phoenixcontact.com/de/produkte/0824638>



Marker for terminal blocks, can be ordered: by sheet, white, labeled according to customer specifications, mounting type: snap into flat marker groove, for terminal block width: 5.2 mm, lettering field size: 4.6 x 5.1 mm, Number of individual labels: 96

---

## Marker for terminal blocks

Marker for terminal blocks - UCT-TMF 5 - 0828744

<https://www.phoenixcontact.com/de/produkte/0828744>



Marker for terminal blocks, Sheet, white, unlabeled, can be labeled with: TOPMARK NEO, TOPMARK LASER, BLUEMARK ID COLOR, BLUEMARK ID, BLUEMARK CLED, THERMOMARK PRIME, THERMOMARK CARD 2.0, THERMOMARK CARD, mounting type: snapped, for terminal block width: 5.2 mm, lettering field size: 4.4 x 4.7 mm, Number of individual labels: 72

# Installation ground terminal block - UTI 2,5-PE/L/NT

3076028

<https://www.phoenixcontact.com/de/produkte/3076028>

## Marker for terminal blocks

Marker for terminal blocks - UCT-TMF 5 CUS - 0829658

<https://www.phoenixcontact.com/de/produkte/0829658>



Marker for terminal blocks, can be ordered: by sheet, white, labeled according to customer specifications, mounting type: snap into flat marker groove, for terminal block width: 5.2 mm, lettering field size: 4.4 x 4.7 mm, Number of individual labels: 72

---

## Test plugs

Test plugs - MPS-MT - 0201744

<https://www.phoenixcontact.com/de/produkte/0201744>



Test plugs, with solder connection up to 1 mm<sup>2</sup> conductor cross section, color: gray

# Installation ground terminal block - UTI 2,5-PE/L/NT

3076028

<https://www.phoenixcontact.com/de/produkte/3076028>

## Insulating sleeve

Insulating sleeve - MPS-IH WH - 0201663

<https://www.phoenixcontact.com/de/produkte/0201663>

Insulating sleeve, color: white



---

## Insulating sleeve

Insulating sleeve - MPS-IH RD - 0201676

<https://www.phoenixcontact.com/de/produkte/0201676>

Insulating sleeve, color: red



# Installation ground terminal block - UTI 2,5-PE/L/NT

3076028

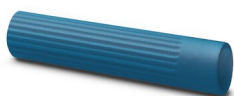
<https://www.phoenixcontact.com/de/produkte/3076028>

## Insulating sleeve

Insulating sleeve - MPS-IH BU - 0201689

<https://www.phoenixcontact.com/de/produkte/0201689>

Insulating sleeve, color: blue



---

## Insulating sleeve

Insulating sleeve - MPS-IH YE - 0201692

<https://www.phoenixcontact.com/de/produkte/0201692>

Insulating sleeve, color: yellow





# Installation ground terminal block - UTI 2,5-PE/L/NT

3076028

<https://www.phoenixcontact.com/de/produkte/3076028>

## Insulating sleeve

Insulating sleeve - MPS-IH GN - 0201702

<https://www.phoenixcontact.com/de/produkte/0201702>

Insulating sleeve, color: green



---

## Insulating sleeve

Insulating sleeve - MPS-IH GY - 0201728

<https://www.phoenixcontact.com/de/produkte/0201728>

Insulating sleeve, color: gray



# Installation ground terminal block - UTI 2,5-PE/L/NT

3076028

<https://www.phoenixcontact.com/de/produkte/3076028>

## Insulating sleeve

Insulating sleeve - MPS-IH BK - 0201731

<https://www.phoenixcontact.com/de/produkte/0201731>

Insulating sleeve, color: black



---

## Test adapter

Test adapter - PAI-4-FIX-5/6 BU - 3035975

<https://www.phoenixcontact.com/de/produkte/3035975>

4 mm test adapter, for terminal blocks with 5.2 mm and 6.2 mm pitch



# Installation ground terminal block - UTI 2,5-PE/L/NT

3076028

<https://www.phoenixcontact.com/de/produkte/3076028>

## Test adapter

Test adapter - PAI-4-FIX-5/6 OG - 3035974

<https://www.phoenixcontact.com/de/produkte/3035974>



4 mm test adapter, for terminal blocks with 5.2 mm and 6.2 mm pitch

---

## Test adapter

Test adapter - PAI-4-FIX-5/6 YE - 3035977

<https://www.phoenixcontact.com/de/produkte/3035977>



4 mm test adapter, for terminal blocks with 5.2 mm and 6.2 mm pitch

# Installation ground terminal block - UTI 2,5-PE/L/NT

3076028

<https://www.phoenixcontact.com/de/produkte/3076028>

## Test adapter

Test adapter - PAI-4-FIX-5/6 RD - 3035976

<https://www.phoenixcontact.com/de/produkte/3035976>



4 mm test adapter, for terminal blocks with 5.2 mm and 6.2 mm pitch

---

## Test adapter

Test adapter - PAI-4-FIX-5/6 GN - 3035978

<https://www.phoenixcontact.com/de/produkte/3035978>



4 mm test adapter, for terminal blocks with 5.2 mm and 6.2 mm pitch

# Installation ground terminal block - UTI 2,5-PE/L/NT

3076028

<https://www.phoenixcontact.com/de/produkte/3076028>

## Test adapter

Test adapter - PAI-4-FIX-5/6 BK - 3035980

<https://www.phoenixcontact.com/de/produkte/3035980>



4 mm test adapter, for terminal blocks with 5.2 mm and 6.2 mm pitch

---

## Test adapter

Test adapter - PAI-4-FIX-5/6 GY - 3035982

<https://www.phoenixcontact.com/de/produkte/3035982>



4 mm test adapter, for terminal blocks with 5.2 mm and 6.2 mm pitch

# Installation ground terminal block - UTI 2,5-PE/L/NT

3076028

<https://www.phoenixcontact.com/de/produkte/3076028>

## Test adapter

Test adapter - PAI-4-FIX-5/6 VT - 3035979

<https://www.phoenixcontact.com/de/produkte/3035979>

4 mm test adapter, for terminal blocks with 5.2 mm and 6.2 mm pitch



---

## Test adapter

Test adapter - PAI-4-FIX-5/6 BN - 3035981

<https://www.phoenixcontact.com/de/produkte/3035981>

4 mm test adapter, for terminal blocks with 5.2 mm and 6.2 mm pitch



# Installation ground terminal block - UTI 2,5-PE/L/NT

3076028

<https://www.phoenixcontact.com/de/produkte/3076028>

## Test adapter

Test adapter - PAI-4-FIX-5/6 WH - 3035983

<https://www.phoenixcontact.com/de/produkte/3035983>

4 mm test adapter, for terminal blocks with 5.2 mm and 6.2 mm pitch



---

## Test plugs

Test plugs - PS-5 - 3030983

<https://www.phoenixcontact.com/de/produkte/3030983>

Test plugs, Modular test plug, color: red



# Installation ground terminal block - UTI 2,5-PE/L/NT

3076028

<https://www.phoenixcontact.com/de/produkte/3076028>

## Spacer plate

Spacer plate - DP PS-5 - 3036725

<https://www.phoenixcontact.com/de/produkte/3036725>



Spacer plate, length: 22.4 mm, width: 5.2 mm, height: 29 mm, number of positions: 1, color: red

---

## Test plugs

Test plugs - PS-5/2,3MM RD - 3038723

<https://www.phoenixcontact.com/de/produkte/3038723>



Test plugs, color: red



# Installation ground terminal block - UTI 2,5-PE/L/NT

3076028

<https://www.phoenixcontact.com/de/produkte/3076028>

## Software

Software - PROJECT COMPLETE - 1050453

<https://www.phoenixcontact.com/de/produkte/1050453>



Intuitive planning and marking software for configuring terminal strips and for professional marking of marking materials for terminal blocks, conductors, cables, devices, and systems. The software is available for download

---

## End clamp

End clamp - CLIPFIX 35 - 3022218

<https://www.phoenixcontact.com/de/produkte/3022218>



Quick mounting end clamp for NS 35/7,5 DIN rail or NS 35/15 DIN rail, with marking option, width: 9.5 mm, color: gray

# Installation ground terminal block - UTI 2,5-PE/L/NT

3076028

<https://www.phoenixcontact.com/de/produkte/3076028>

## End clamp

End clamp - CLIPFIX 35-5 - 3022276

<https://www.phoenixcontact.com/de/produkte/3022276>



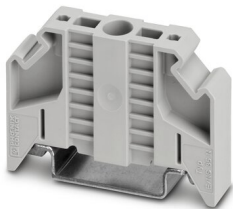
Quick mounting end clamp for NS 35/7,5 DIN rail or NS 35/15 DIN rail, with marking option, with parking option for FBS...5, FBS...6, KSS 5, KSS 6, width: 5.15 mm, color: gray

---

## End clamp

End clamp - E/NS 35 N - 0800886

<https://www.phoenixcontact.com/de/produkte/0800886>



End clamp, width: 9.5 mm, color: gray

---

Phoenix Contact 2022 © - all rights reserved  
<https://www.phoenixcontact.com>

PHOENIX CONTACT Deutschland GmbH  
Flachsmarktstraße 8  
D-32825 Blomberg  
+49 52 35/3-1 20 00  
[info@phoenixcontact.de](mailto:info@phoenixcontact.de)