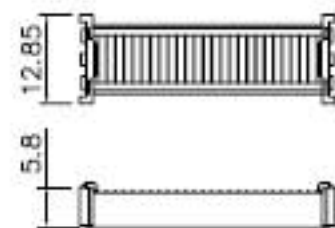
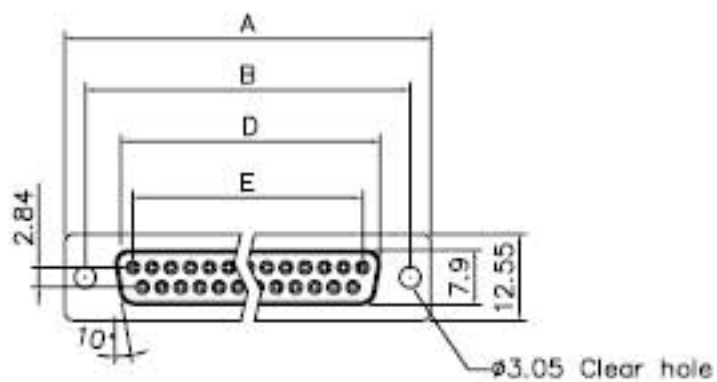


THE INFORMATION CONTAINED IN THIS DOCUMENT IS PROPRIETARY TO Y-S ELECTRONIC, ANY REPRODUCTION IN PART OR WHOLE WITHOUT PRIOR WRITTEN APPROVAL OR AUTHORIZATION OF Y-S ELECTRONIC IS STRICTLY PROHIBITED.

RoHS COMPLIANT

REVISIONS				
REV	EDN NO.	DESCRIPTION	APPROVED BY	DATE
A		△	KING CHIU	2006-06-03



Cover

Product Specification

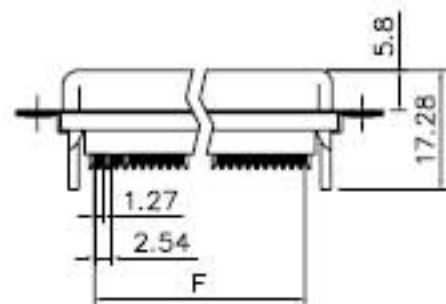
Material

Insulator : Glass-Filled Thermoplastic PBT, UL94V-0
 Contact : Copper alloy
 Shell: SPCC

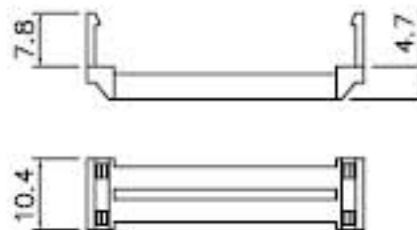
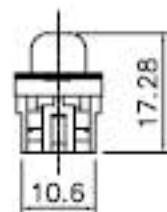
Electrical

Contact Resistance : 20 milliohms
 Max at 1 AMP DC.
 Insulation Resistance : 1000
 megohms at 500 VDC
 Dielectric Withstanding Voltage :
 1000 VAC/rms 60Hz for 1 minute
 Current Rating : 1 AMP
 Voltage Rating : 250 VAC/rms 60Hz

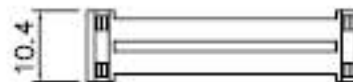
Important is that the min mating cycles d-sub5 must have are 1000



Without Insulator Support



Strain Relief



Dimensions

Positions	A	B	D	E	F
9	30.81	24.99	16.33	11.08	10.16
15	39.14	33.32	24.66	19.39	17.78
25	53.04	47.04	38.38	33.24	30.48
37	69.32	63.50	54.84	49.86	45.72

DIMENSIONS:

mm [INCH] INCH [mm] mm ONLY

UNLESS OTHERWISE SPECIFIED, GENERAL TOLERANCE:

DECIMALS ANGLES
 .X ±0.38 [0.015] X* ±3°
 .X ±0.25 [0.010] X* ±1.0°
 .XX ±0.13 [0.005]

MATERIAL

FINISH

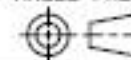
CAD GENERATED DRAWING, DO NOT MANUALLY UPDATE

DRAWN BY AND DATE
 JUSTIN XING 05-18-06

CHECKED BY AND DATE
 JUSTIN XING 06-03-06

APPROVED BY AND DATE
 KING CHIU 06-03-06

THIRD ANGLE PROJECTION



SCALE: 1:1 SIZE: A3

240058

TITLE
 103 SERIES
 D-SUB IDC TYPE

DRAWING NO.
 103-XX2X2X021

REV
 A

FILE NO. SHEET 1 OF 1

DO NOT SCALE DRAWING