

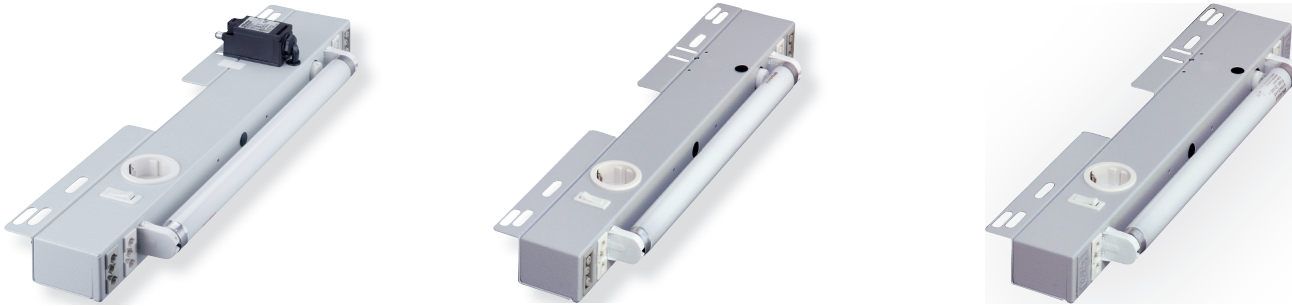
Switch Cabinet Lighting

Switch cabinet lighting 14W, 18W, 30W 230-240V 50Hz and linear lamps 230-240V 50/60Hz 35/60W

with integrated door position switch (applicable for various switch cabinet types), socket capacity 16A, On/Off switch, anti-interference capacitor, mains connection and passage wiring, applicable for the parallel switching of several lightings, potential-free exit on both sides (normally closed contact) capacity 4A, e.g. for fan control, door surveillance, connections towards the backside, new fixing enables assembly from below (with erection bolts, by aid of a cordless power drill).

Colour RAL 7035 structural colour.

Approval: CE, ENEC (European approbation), VDE and GS checked, EMV checked, corresp. RoHS.,



With door position switch mounted on lighting
(applicable for various switch cabinet types)

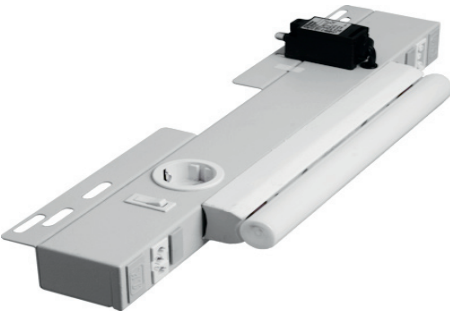
- LL14-SK-R** 14W, dimensions: 500/150/70 (L/W/H)
suitable for switch cabinets as from 600mm width
- LL18-SK-R** 18W, dimensions: 700/150/70 (L/W/H)
suitable for switch cabinets as from 800mm width
- LL30-SK-R** 30W, dimensions: 1050/150/70 (L/W/H)
suitable for switch cabinets as from 1200mm width
on request with UL and UL-Canada approbation.

With plugged connection for a door position switch on both sides,
(e.g. S-K-K-06)

- LL14-ST-R** 14W, dim.: 500/150/41 (L/W/H) suitable for switch cabinets as from 600mm width
- LL18-ST-R** 18W, dim.: 700/150/41 (L/W/H) suitable for switch cabinets as from 800mm width
- LL30-ST-R** 30W, dim.: 1050/150/41 (L/W/H) suitable for switch cabinets as from 1200mm width
on request with UL and UL-Canada approbation.

With passage wiring

- LL14-D-R** 14W, dim: 500/150/41 (L/W/H) suitable for switch cabinets as from 600mm width
- LL18-D-R** 18W, dim: 700/150/41 (L/W/H) suitable for switch cabinets as from 800mm width
- LL30-D-R** 30W, dim: 1050/150/41 (L/W/H) suitable for switch cabinets as from 1200mm width
on request with UL and UL-Canada approbation.



Line lamp

With door position switch mounted on the lighting
(applicable for various switch cabinet types)

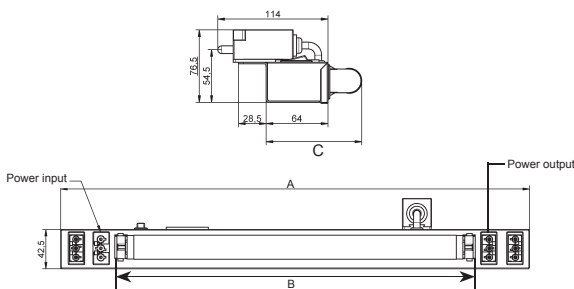
- LL35-SK-R** 35W, dim: 500/181/70 (L/W/H) suitable for switch cabinets as from 600mm width
- LL60-SK-R** 60W, dim: 700/181/70 (L/W/H) suitable for switch cabinets as from 800mm width

With plugged connection for a door position switch on both sides,
(e.g. S-K-K-06)

- LI35-ST-R** 35W, dim: 500/181/42,5 (L/W/H) suitable for switch cabinets as from 600mm width
- LI60-ST-R** 60W, dim: 700/181/42,5 (L/W/H) suitable for switch cabinets as from 800mm width

With passage wiring

- LI35-D-R** 35W, dim: 500/181/42,5 (L/W/H) suitable for switch cabinets as from 600mm width
- LI60-D-R** 60W, dim: 700/181/42,5 (L/W/H) suitable for switch cabinets as from 800mm width



Model	Dim. A	Dim. B	Dim. C
LL 14-.-R/-UL	500	380	128
LL 18-.-R/-UL	700	610	128
LL 30-.-R/-UL	1050	915	128
LI 35-.-R	500	300	150
LI 60-.-R	700	500	150

on request: Special voltages:
12V DC, 24V DC, 48V DC, 110V 50Hz, 115V 50Hz / 127V 60Hz,
EVG 200-240V AC oder UVG 100-240V AC

Sockets for various countries
on request.



upon request

Switch Cabinet Lighting

Switch cabinet lighting 14W, 18W, 30W 230-240V 50Hz and linear lamps 35/60W

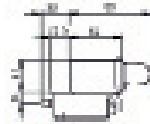
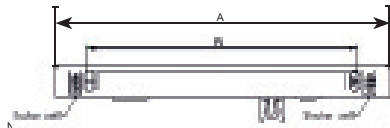
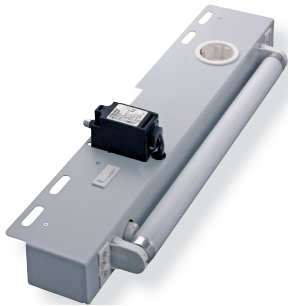
with integrated door position switch (applicable for various switch cabinet types), socket capacity 16A, On/Off switch, anti-interference capacitor, mains connection and passage wiring, applicable for the parallel switching of several lightings, potential-free exit on both sides (normally closed contact) capacity 4A, e.g. for fan control, door surveillance connections towards the sides, lateral fixing for horizontal and vertical installation with erection bolts.

Colour RAL 7035 structural colour.

Approbation: CE, ENEC (European approbation), VDE and GS checked, EMV checked, corresp. RoHS.

With door position switch mounted on the lighting (applicable for various switch cabinet types)

LL14-SK-D-R 14W, Dim.: 470/96/70 (L/T/H) suitable for switch cabinets as from 600mm width
LL18-SK-D-R 18W, Dim.: 670/96/70 (L/T/H) suitable for switch cabinets as from 800mm width



Modell	Maß A	Maß B
LL 14-../-UL	470	380
LL 18-../-UL	670	610

Switch Cabinet Lighting 8, 14, 18, 30W 230V 50Hz and linear lamps 230-240V 50/60Hz 35/60W

with integrated door position switch (applicable for various switch cabinet types), socket capacity 16A, On/Off switch, anti-interference capacitor, mains connection and passage wiring, applicable for the parallel switching of several lightings, potential-free exit on both sides (normally closed contact) capacity 4A, e.g. for fan control, door surveillance, connections towards the sides, lateral fixing for horizontal and vertical installation with erection bolts. **Colour RAL 7035 structural colour. Approbation: CE, ENEC (European approbation), VDE and GS checked, EMV checked, corresp. RoHS**

With door position switch mounted on the lighting (applicable for various switch cabinet types)

LL08-SK 8W, Dim: 375/87/70 (L/W/H) suitable for switch cabinets as from 600mm width
LL14-SK 14W, Dim: 450/96/70 (L/W/H) suitable for switch cabinets as from 800mm width
LL18-SK 18W, Dim: 675/96/70 (L/W/H) suitable for switch cabinets as from 1000mm width
LL30-SK 30W, Dim: 1000/96/70 (L/W/H) suitable for switch cabinets as from 1200mm width
on request with UL and UL-Canada approbation.



With plugged connection for a door position switch on both sides, (e.g. S-K-K-06)

LL08-ST 8W, Dim: 375/87/41 (L/W/H) suitable for switch cabinets as from 600mm width
LL14-ST 14W, Dim: 450/96/41 (L/W/H) suitable for switch cabinets as from 800mm width
LL18-ST 18W, Dim: 675/96/41 (L/W/H) suitable for switch cabinets as from 1000mm width
LL30-ST 30W, Dim: 1000/96/41 (L/W/H) suitable for switch cabinets as from 1200mm width
on request with UL and UL-Canada approbation.

With passage wiring

LL08-D 8W, Dim: 375/87/41 (L/W/H) suitable for switch cabinets as from 600mm width
LL14-D 14W, Dim: 450/96/41 (L/W/H) suitable for switch cabinets as from 800mm width
LL18-D 18W, Dim: 675/96/41 (L/W/H) suitable for switch cabinets as from 1000mm width
LL30-D 30W, Dim: 1000/96/41 (L/W/H) suitable for switch cabinets as from 1200mm width
on request with UL and UL-Canada approbation.

Line lamp

with door position switch mounted on the lighting (applicable for various switch cabinet types)

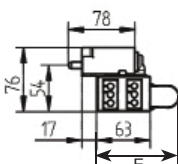
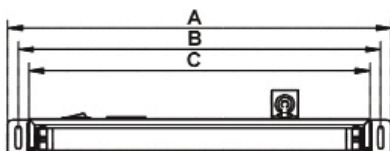
LI35-SK 35W, Dim: 450/118/70 (L/W/H) suitable for switch cabinets as from 800mm width
LI60-SK 60W, Dim: 575/118/70 (L/W/H) suitable for switch cabinets as from 1000mm width

With plugged connection for a door position switch on both sides, (e.g. S-K-K-06)

LI35-ST 35W, Dim: 450/118/41 (L/W/H) suitable for switch cabinets as from 800mm width
LI60-ST 60W, Dim: 575/118/41 (L/W/H) suitable for switch cabinets as from 1000mm width

With passage wiring

LI35-D 35W, Dim: 450/118/41 (L/W/H) suitable for switch cabinets as from 800mm width
LI60-D 60W, Dim: 575/118/41 (L/W/H) suitable for switch cabinets as from 1000mm width



Model	Dim A	Dim B	Dim C	Dim D	Dim E
LL 08-../-UL	375	330	350	305	87
LL 14-../-UL	450	405	425	380	96
LL 18-../-UL	675	635	650	610	96
LL 30-../-UL	1000	940	975	915	96
LI 35-..	450	405	425	300	118
LI 60-..	575	520	550	500	118