

Rittal – The System.

Faster – better – worldwide.

Hygienic Design – HD 1308.600

Date : Jan 16, 2014

ENCLOSURES

POWER DISTRIBUTION

CLIMATE CONTROL

IT INFRASTRUCTURE

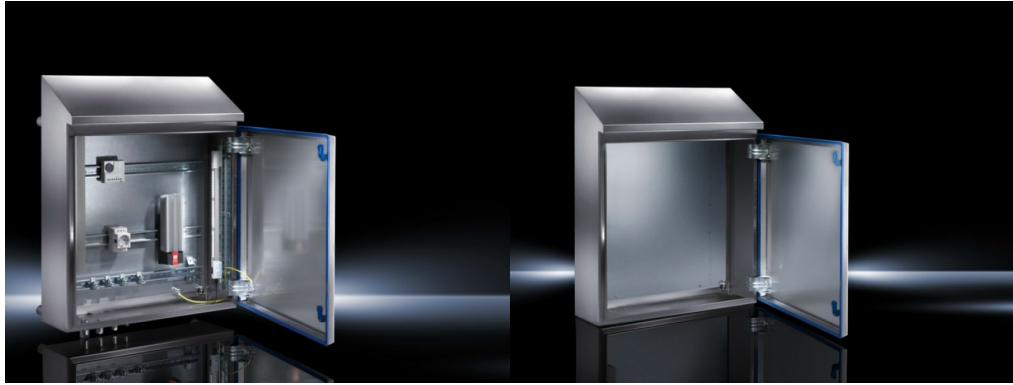
SOFTWARE & SERVICES

FRIEDHELM LOH GROUP



Hygienic Design Compact enclosure HD – HD 1308.600

created : 16.01.2014 on www.rittal.com/com-en



Product description

Material: Enclosure and door: Stainless steel 1.4301 (AISI 304)
Mounting plate: Sheet steel
Lock inserts HD: Stainless steel 1.4404 (AISI 316L)
Seal: Silicone, compliant with FDA Guideline 21 CFR 177.2600

Surface finish: Enclosure and door: Brushed, grain 400, peak-to-valley height < 0.8 µm
Mounting plate: Zinc-plated
Seal: Blue, dyed (RAL 5010)

**Protection category
IP to IEC 60 529:** IP 66

**Protection category
IP to DIN 40 050-9:** IP 69K

**Protection category
NEMA:** NEMA 13
NEMA 4X






Supply includes: Enclosure of all-round solid construction
Door with press-fitted seal
Interchangeable door hinge
Mounting plate

Packs of: 1 pc(s).

EAN: 4028177567634

Product features

Dimensions: Width: 390 mm
Height (front): 650 mm
Height (rear): 769 mm
Depth: 210 mm

Mounting plate:	Width: 334 mm Height: 570 mm
Approvals	
Certificates	 DGUV (FR, EN, DE)
Declarations	 Manufacturer's declaration (DE, EN)  Declaration of conformity (EN, DE)
Approvals	 UL + C-UL (EN)
Downloads / CAD	
Documentation	 Instructions (DE, EN)
Characteristic curves	Sorry, there is currently no information available
Videos	Sorry, there is currently no information available
Data sheets	Sorry, there is currently no information available
CAD-Drawing	Request
Treiber/Software	Sorry, there is currently no information available

Please note that there are the following alternative products:



Kompakt-Schaltschränke AE

Weitere Informationen zu diesem Produkt

» www.rittal.com/com-en/Compact_enclosures_AE