

Rittal – The System.

Faster – better – worldwide.

Hygienic Design – HD 1320.600

Date : Jan 16, 2014

ENCLOSURES

POWER DISTRIBUTION

CLIMATE CONTROL

IT INFRASTRUCTURE

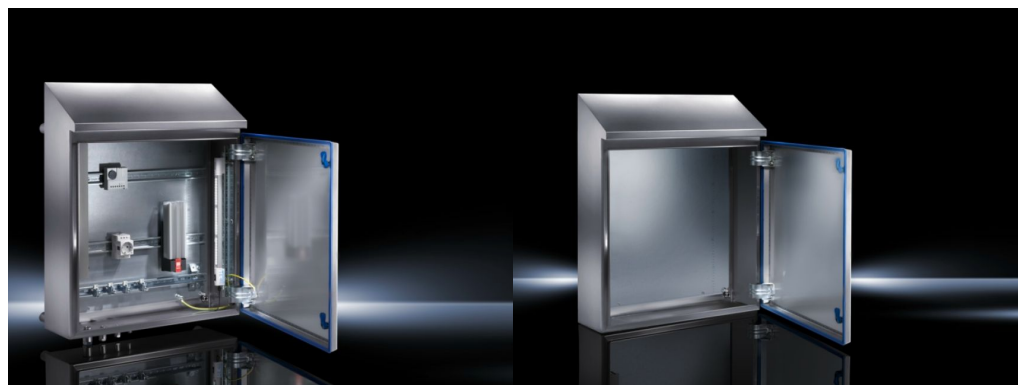
SOFTWARE & SERVICES

FRIEDHELM LOH GROUP



Hygienic Design Compact enclosure HD – HD 1320.600

created : 16.01.2014 on www.rittal.com/com-en








Product description

Material:	Enclosure and door: Stainless steel 1.4301 (AISI 304) Mounting plate: Sheet steel Lock inserts HD: Stainless steel 1.4404 (AISI 316L) Seal: Silicone, compliant with FDA Guideline 21 CFR 177.2600
Surface finish:	Enclosure and door: Brushed, grain 400, peak-to-valley height < 0.8 µm Mounting plate: Zinc-plated Seal: Blue, dyed (RAL 5010)
Protection category IP to IEC 60 529:	IP 66
Protection category IP to DIN 40 050-9:	IP 69K
Protection category NEMA:	NEMA 13 NEMA 4X
Supply includes:	Enclosure of all-round solid construction Door with press-fitted seal Interchangeable door hinge Mounting plate
Packs of:	1 pc(s).
EAN:	4028177567665

Product features

Dimensions:	Width: 610 mm Height (front): 430 mm Height (rear): 601 mm Depth: 300 mm
--------------------	---

Mounting plate:	Width: 549 mm Height: 355 mm
Approvals	
Certificates	 DGUV (FR, EN, DE)
Declarations	 Manufacturer's declaration (DE, EN)  Declaration of conformity (EN, DE)
Approvals	 UL + C-UL (EN)
Downloads / CAD	
Documentation	 Instructions (DE, EN)
Characteristic curves	Sorry, there is currently no information available
Videos	Sorry, there is currently no information available
Data sheets	Sorry, there is currently no information available
CAD-Drawing	Request
Treiber/Software	Sorry, there is currently no information available