

Rittal – The System.

Faster – better – everywhere.

Wall mounting bracket for KS – KS 1483.010

Date : Dec 10, 2014

ENCLOSURES

POWER DISTRIBUTION

CLIMATE CONTROL

IT INFRASTRUCTURE

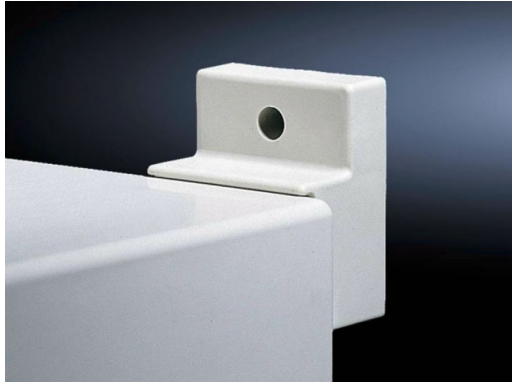
SOFTWARE & SERVICES

FRIEDHELM LOH GROUP



Wall mounting bracket for KS – KS 1483.010

created : 10.12.2014 on www.rittal.com/com-en



Product description

Description: For attachment to the wall, only possible from the outside of the enclosure.

Material: Fibreglass-reinforced polyamide

Colour: Similar to RAL 7035

Supply includes: Assembly parts for mounting on the enclosure.

Packs of: 4 pc(s).

EAN: 4028177526808

Customs tariff number: 39269097

eCl@ss 5.1: 27189234

eCl@ss 7.0: 27182405

Product features

To fit: Enclosure type: KS

Weight: 0.06 kg

Downloads

CAD drawings: Request

Rittal – The System.

Faster – better – everywhere.

- Enclosures
- Power distribution
- Climate Control
- IT Infrastructure
- Software & services

Rittal GmbH & Co. KG
Postfach 1662 · D-35726 Herborn
Phone: +49 (0) 2772 505-0 · Fax: +49 (0) 2772 505-2319
E-Mail: info@rittal.com · www.rittal.com

ENCLOSURES

POWER DISTRIBUTION

CLIMATE CONTROL

IT INFRASTRUCTURE

SOFTWARE & SERVICES



FRIEDHELM LOH GROUP