

# Rittal – The System.

Faster – better – everywhere.

## Plastic handles – KS 1484.001

Date : Aug 5, 2019

ENCLOSURES

POWER DISTRIBUTION

CLIMATE CONTROL

IT INFRASTRUCTURE

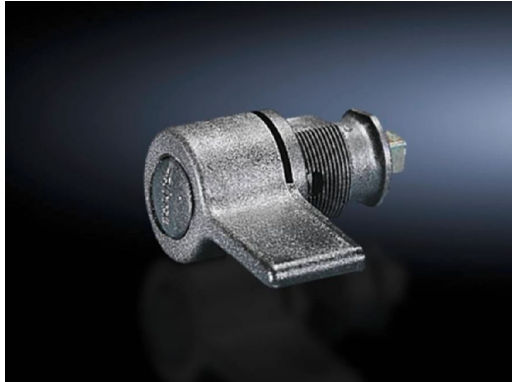
SOFTWARE & SERVICES

FRIEDHELM LOH GROUP



# Plastic handles – KS 1484.001

created: 05.08.2019 build on [www.rittal.com/au-en](http://www.rittal.com/au-en)



## Product description

**Colour:** RAL 8019

## Product features

**To fit:** Enclosure type: KS with cam

**Lock insert:** without lock cylinder insert

**Packs of:** 1 pc(s).

**Weight/pack:** 0.04 kg

**Copper weight (kg per piece):** 0

**EAN:** 4028177007246

**Customs tariff number:** 39269097

**ETIM 6.0:** EC000327

**ETIM 5.0:** EC000327

**eCl@ss 8.0/8.1:** 27409217

**eCl@ss 7.0/7.1:** 27189266

**eCl@ss 6.0/6.1:** 27189266

---

**eCl@ss 5.1/5.1.4:** 27189220

---

**Product description:** KS Plastic handle, version E, without lock cylinder insert

---

## **Approvals**

---

**Certificates:** EAC

---