

# Rittal – The System.

Faster – better – everywhere.

## Terminal boxes KL – KL 1513.510

Date : Jan 28, 2014

ENCLOSURES

POWER DISTRIBUTION

CLIMATE CONTROL

IT INFRASTRUCTURE

SOFTWARE & SERVICES

FRIEDHELM LOH GROUP



# Terminal boxes KL without gland plate – KL 1513.510

created : 28.01.2014 on www.rittal.com/com-en



## Product description

<b>Material:</b>	Enclosure: Sheet steel Cover: Sheet steel, all-round foamed-in PU seal
<b>Surface finish:</b>	Enclosure and cover: Dipcoat primed, powder-coated on the outside, textured paint
<b>Colour:</b>	RAL 7035
<b>Protection category IP to IEC 60 529:</b>	IP 66
<b>Protection category NEMA:</b>	NEMA 4
<b>Supply includes:</b>	Enclosure with cover Quick-release fastener including plastic bushes
<b>Packs of:</b>	1 pc(s).
<b>EAN:</b>	4028177251250
<b>Customs tariff number:</b>	94032080

## Product features

<b>Dimensions:</b>	Width: 800 mm Height: 400 mm Depth: 120 mm
<b>Weight:</b>	11 kg

Approvals	
Certificates	Sorry, there is currently no information available
Declarations	<ul style="list-style-type: none"> <li> Manufacturer's declaration (EN, DE)</li> <li> Declaration of conformity (EN, DE)</li> </ul>
Approvals	<ul style="list-style-type: none"> <li> Bureau Veritas (EN)</li> <li> CSA (EN)</li> <li> C-UL (EN)</li> <li> Lloyds Register of Shipping (EN)</li> <li> Russian Maritime Register of Shipping (RU, EN)</li> <li> TÜV (DE)</li> <li> TÜV (EN)</li> <li> UL (EN)</li> <li> VDE (EN, DE)</li> <li> Germanischer Lloyd (EN)</li> </ul>
Downloads / CAD	
Documentation	 Instructions (EN, DE)
Characteristic curves	Sorry, there is currently no information available
Videos	Sorry, there is currently no information available
Data sheets	Sorry, there is currently no information available
CAD-Drawing	Request
Treiber/Software	Sorry, there is currently no information available

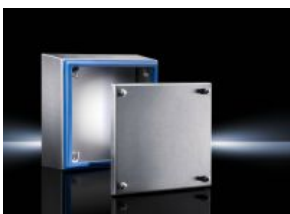
Please note that there are the following alternative products:



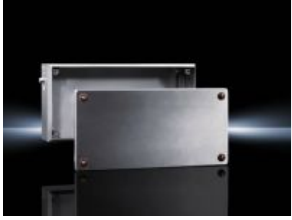
Klemmenkästen KL mit Flansch



Klemmenkästen KL Edelstahl



Hygienic Design Klemmenkästen HD



Ex-Gehäuse Edelstahl, Leergehäuse mit verschraubtem Deckel