

# Rittal – The System.

Faster – better – everywhere.

## ► Small enclosures KX Terminal box KX, sheet steel, with gland plate – KX 1540.000

Date : Feb 14, 2020

ENCLOSURES

POWER DISTRIBUTION

CLIMATE CONTROL

IT INFRASTRUCTURE

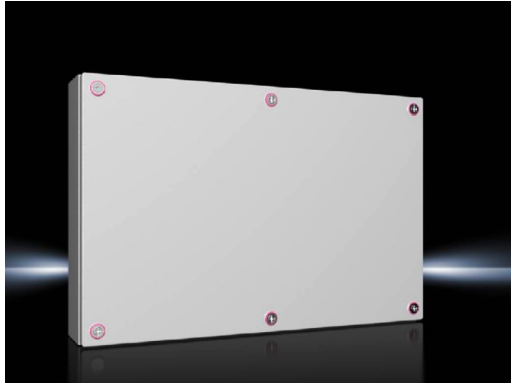
SOFTWARE & SERVICES

FRIEDHELM LOH GROUP



# Small enclosures KX Terminal box KX, sheet steel, with gland plate – KX 1540.000

created: 14.02.2020 build on [www.rittal.com/uk-en](http://www.rittal.com/uk-en)



## Product description

<b>Material:</b>	Enclosure: Sheet steel Cover: Sheet steel, all-round foamed-in PU seal
<b>Surface finish:</b>	Enclosure and cover: Dipcoat primed, powder-coated on the outside, textured paint
<b>Colour:</b>	RAL 7035
<b>Protection category IP to IEC 60 529:</b>	IP 55
<b>Protection category NEMA:</b>	NEMA 12
<b>Type rating to UL 508A:</b>	Type 1, 12
<b>IK Code:</b>	IK08
<b>Supply includes:</b>	Enclosure with cover Mini cam locks Sheet steel gland plates with seals and assembly parts
<b>Basic material:</b>	Sheet steel

## Product features

<b>Dimensions:</b>	Width: 600 mm Height: 400 mm Depth: 120 mm
--------------------	--

<b>Material thickness:</b>	Enclosure: 1.25 mm Cover: 1.25 mm
<b>Gland plates:</b>	Qty. top/bottom: 2 + 2 Qty. left/right: 1 + 1
<b>Packs of:</b>	1 pc(s).
<b>Weight/pack:</b>	9.32 kg
<b>EAN:</b>	4028177816459
<b>Customs tariff number:</b>	85389099
<b>ETIM 7.0:</b>	EC002713
<b>ETIM 6.0:</b>	EC002713
<b>eCl@ss 8.0/8.1:</b>	27180101
<b>eCl@ss 6.0/6.1:</b>	27180101
<b>Product description:</b>	KX Terminal box, WHD: 600x400x120 mm, sheet steel, without mounting plate, with cover, with gland plate
<b>Approvals</b>	
<b>Approvals:</b>	UL + C-UL
<b>Declarations:</b>	Declaration of conformity