

Rittal – The System.

Faster – better – everywhere.

Mounting plates – KL 1573.700

Date : Jan 29, 2014

ENCLOSURES

POWER DISTRIBUTION

CLIMATE CONTROL

IT INFRASTRUCTURE

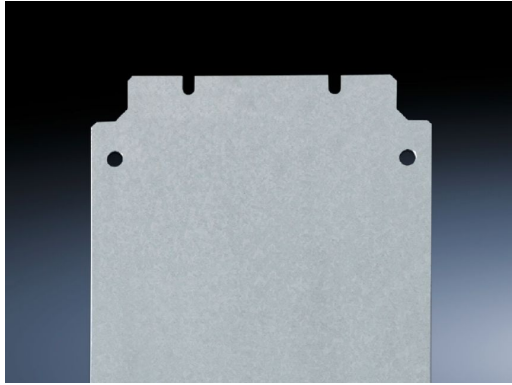
SOFTWARE & SERVICES

FRIEDHELM LOH GROUP



Mounting plates for KL and KL-HD – KL 1573.700

created : 29.01.2014 on www.rittal.com/com-en



Product description

Description: For component installation outside of the enclosure. Assembly screws included as accessories with the enclosure.

Material: Sheet steel, 2.0 mm

Surface finish: zinc-plated

Packs of: 1 pc(s).

EAN: 4028177010406

Customs tariff number: 94039010

Product features

To fit: Enclosure type: KL
Width: 800 mm
Height: 400 mm

Approvals

Certificates Sorry, there is currently no information available

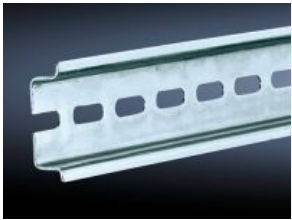
Declarations Sorry, there is currently no information available

Approvals Sorry, there is currently no information available

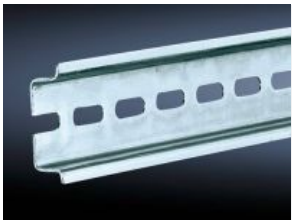
Downloads / CAD

Documentation	Sorry, there is currently no information available
Characteristic curves	Sorry, there is currently no information available
Videos	Sorry, there is currently no information available
Data sheets	Sorry, there is currently no information available
CAD-Drawing	Request
Treiber/Software	Sorry, there is currently no information available

Please note that there are the following alternative products:



Tragschienen TS 35/7,5 nach EN 60 715 für KL, KL-HD, AE



Tragschienen TS 35/15 nach EN 60 715 für KL, AE