

# Rittal – The System.

Faster – better – everywhere.

## Wall mounting bracket for KX – KX 1594.010

Date : Mar 2, 2020

ENCLOSURES

POWER DISTRIBUTION

CLIMATE CONTROL

IT INFRASTRUCTURE

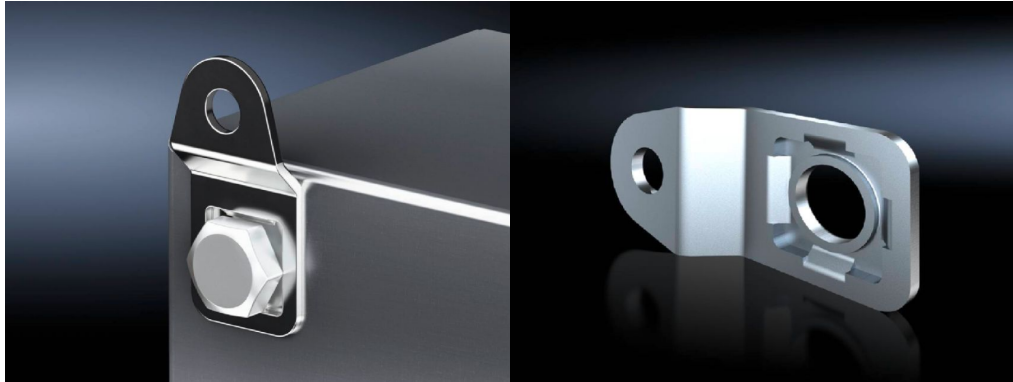
SOFTWARE & SERVICES

FRIEDHELM LOH GROUP



# Wall mounting bracket for KX – KX 1594.010

created: 02.03.2020 build on [www.rittal.com/uk-en](http://www.rittal.com/uk-en)



## Product description

<b>Description:</b>	For the attachment of AX and KX stainless steel enclosures.
<b>Material:</b>	Stainless steel 1.4301 (AISI 304)
<b>Supply includes:</b>	Assembly parts
<b>Note:</b>	For hygiene reasons, and to retain the protection category, the stainless steel enclosures do not have any drilled holes for wall mounting.

## Product features

<b>To fit:</b>	Enclosure type: AX stainless steel Enclosure type: KX stainless steel
<b>Wall distance:</b>	10 mm
<b>Copper weight (kg per piece):</b>	0
<b>ETIM 7.0:</b>	EC002625
<b>ETIM 6.0:</b>	EC002625
<b>eCl@ss 8.0/8.1:</b>	27189234
<b>eCl@ss 6.0/6.1:</b>	27182405
<b>Product description:</b>	SZ Wall mounting bracket, for AX and KX, stainless steel, wall distance: 8 mm

